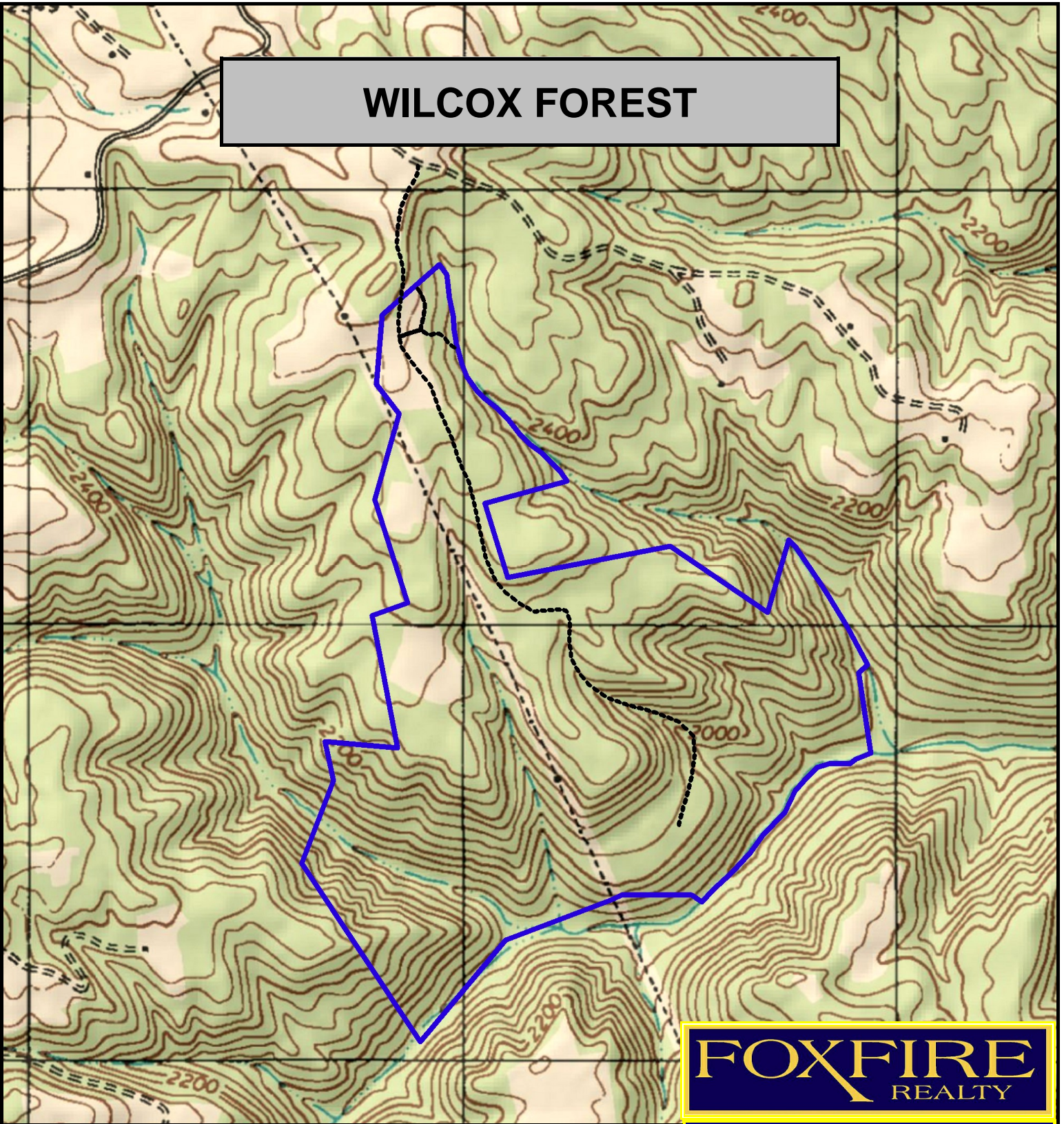
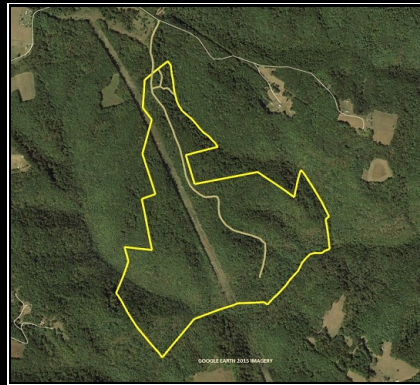


WILCOX FOREST



FOXFIRE
REALTY



WILCOX FOREST, Summers County, WV (topographic map)
Elevation Range: 1813' - 2580' +/-; Google Coordinates:
LAT 37.523683 (N), LON -80.944811 (W)
This map is for general location purposes only. Consult a licensed land
surveyor for actual boundary location and acreage.

RICHARD GRIST, Broker - Auctioneer - Forester
304.646.8837 Richard@Foxfirenation.com
WWW.FOXFIRENATION.COM

FOR TOPO MAP

SCALE 1:12000

1 INCH = 1,000 FT.

