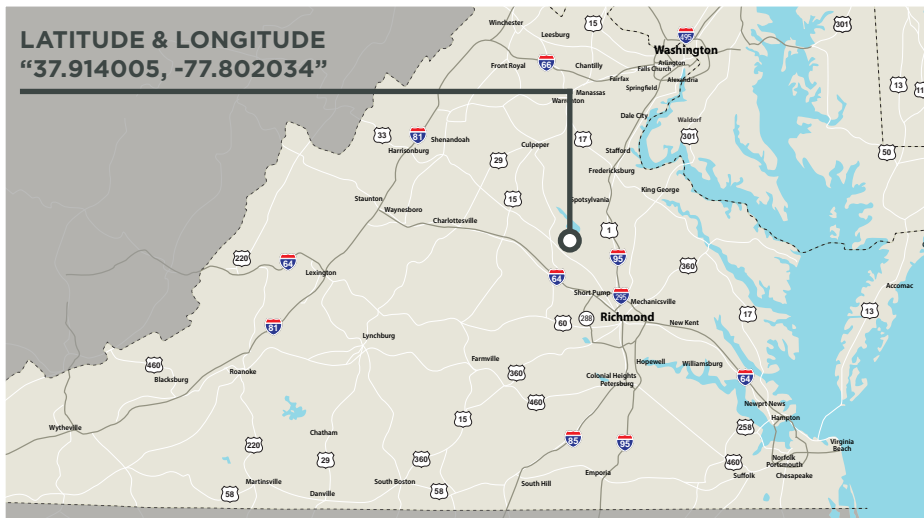


LATITUDE & LONGITUDE
"37.914005, -77.802034"



Features

EXCELLENT timberland/recreational investment opportunity

CONSISTS primarily of mature hardwood timberland. Timber Cruise available from Fall 2019

EXCELLENT ACCESS significant frontage along Wickham Road (SR 601) and deeded access from Buckner Road (SR 609)

INTERNAL ROADS provide access throughout the property

INCREDIBLE recreational potential with healthy populations of deer and turkeys

MULTIPLE potential home sites. Consists of two tax parcels

3± MILES of stream frontage - sets eastern and western boundary.

ASKING \$1,900,000

Contacts

Randy Cosby

804-433-1819

rcosby@commonwealthland.com

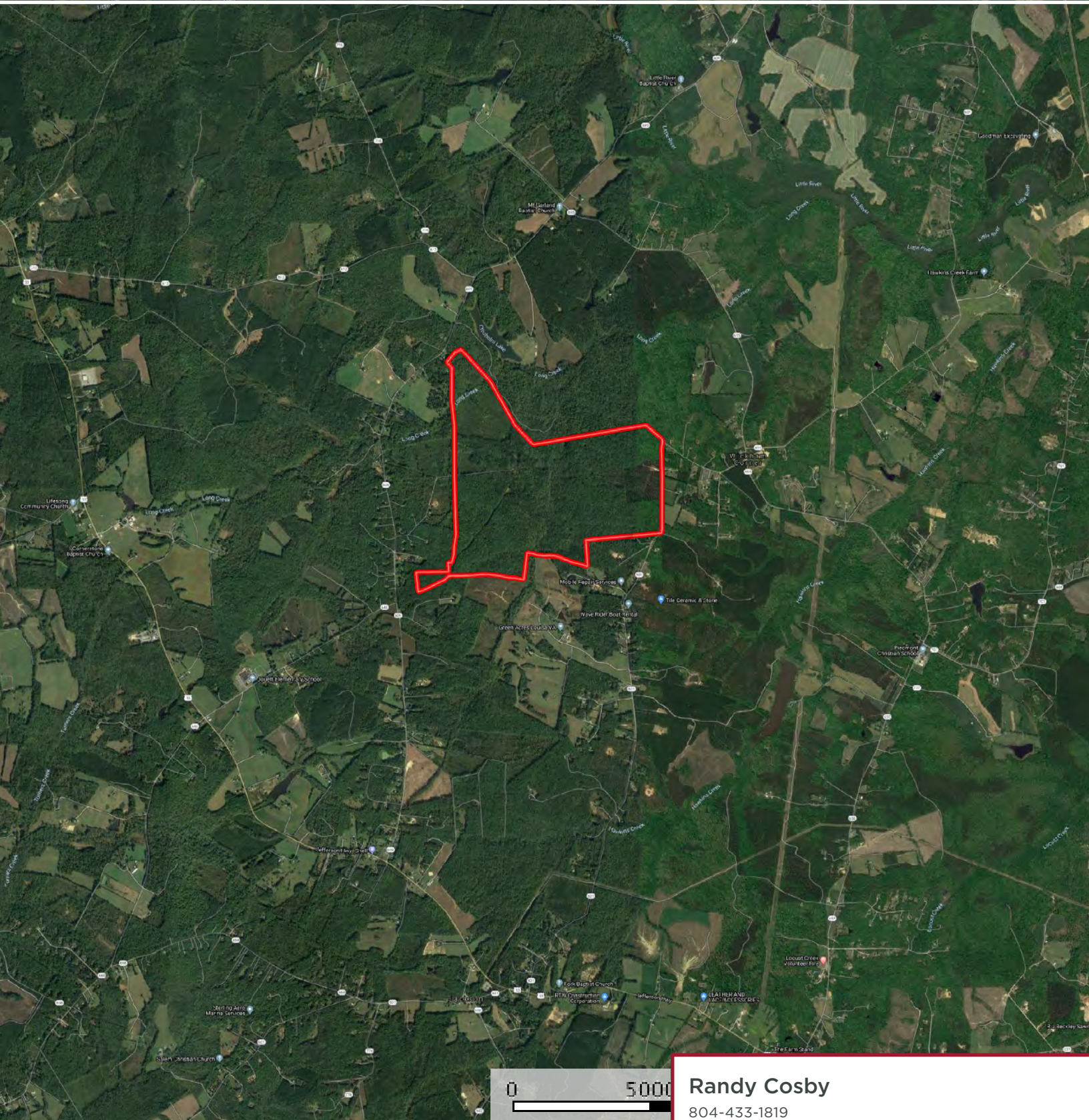
Chris Jenkins

804-228-4928

cjenkins@commonwealthland.com

**WICKHAM ROAD
BUMPASS, VA 23024**

**FOR SALE | 577± ACRES
LOUISA COUNTY, VA
Price: \$1,900,000 (\$3,292/acre)**



Randy Cosby

804-433-1819

rcosby@commonwealthland.com

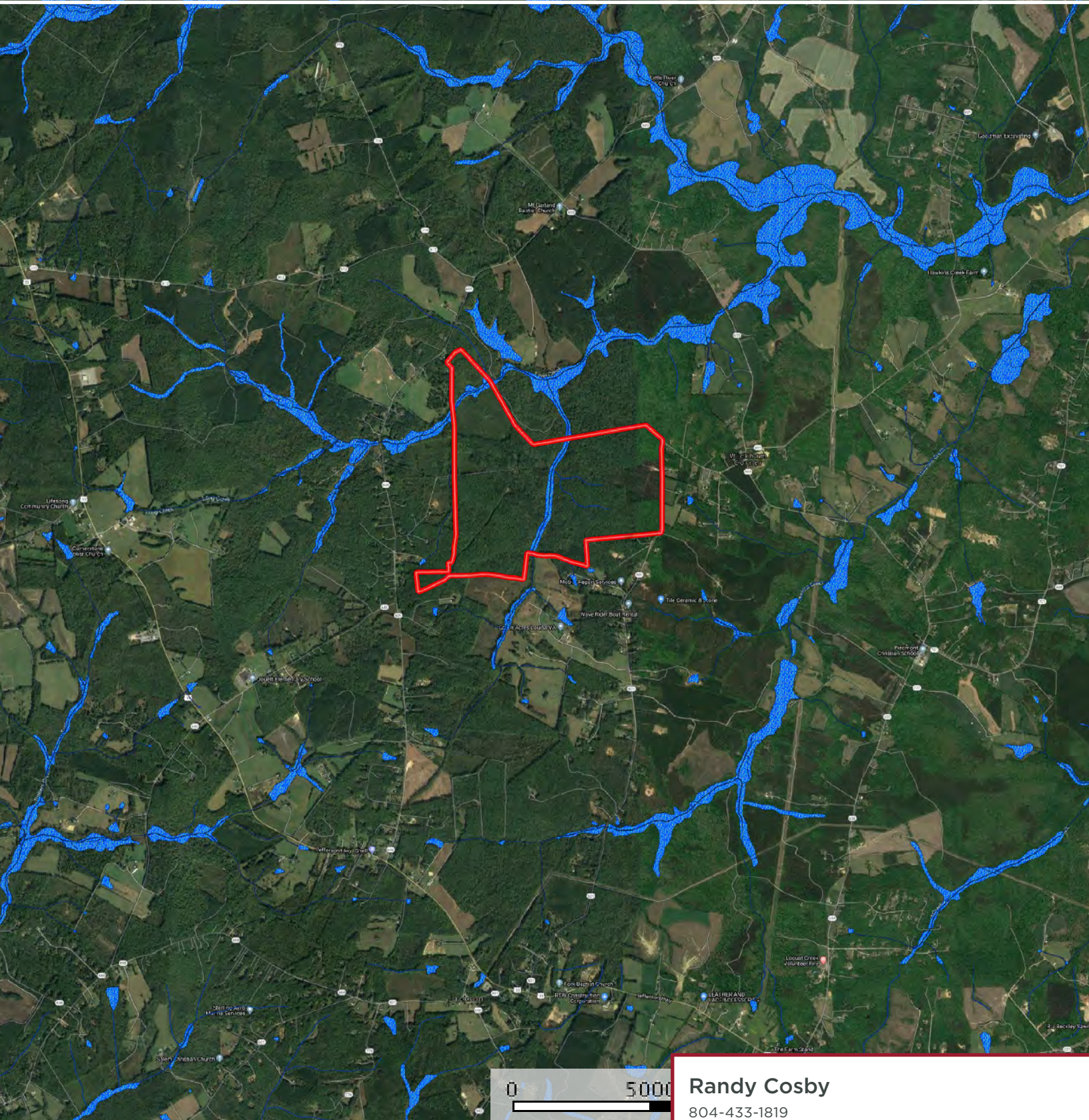
Chris Jenkins

804-228-4928

cjenkins@commonwealthland.com

**WICKHAM ROAD
BUMPASS, VA 23024**

**FOR SALE | 577± ACRES
LOUISA COUNTY, VA
Price: \$1,900,000 (\$3,292/acre)**



Randy Cosby

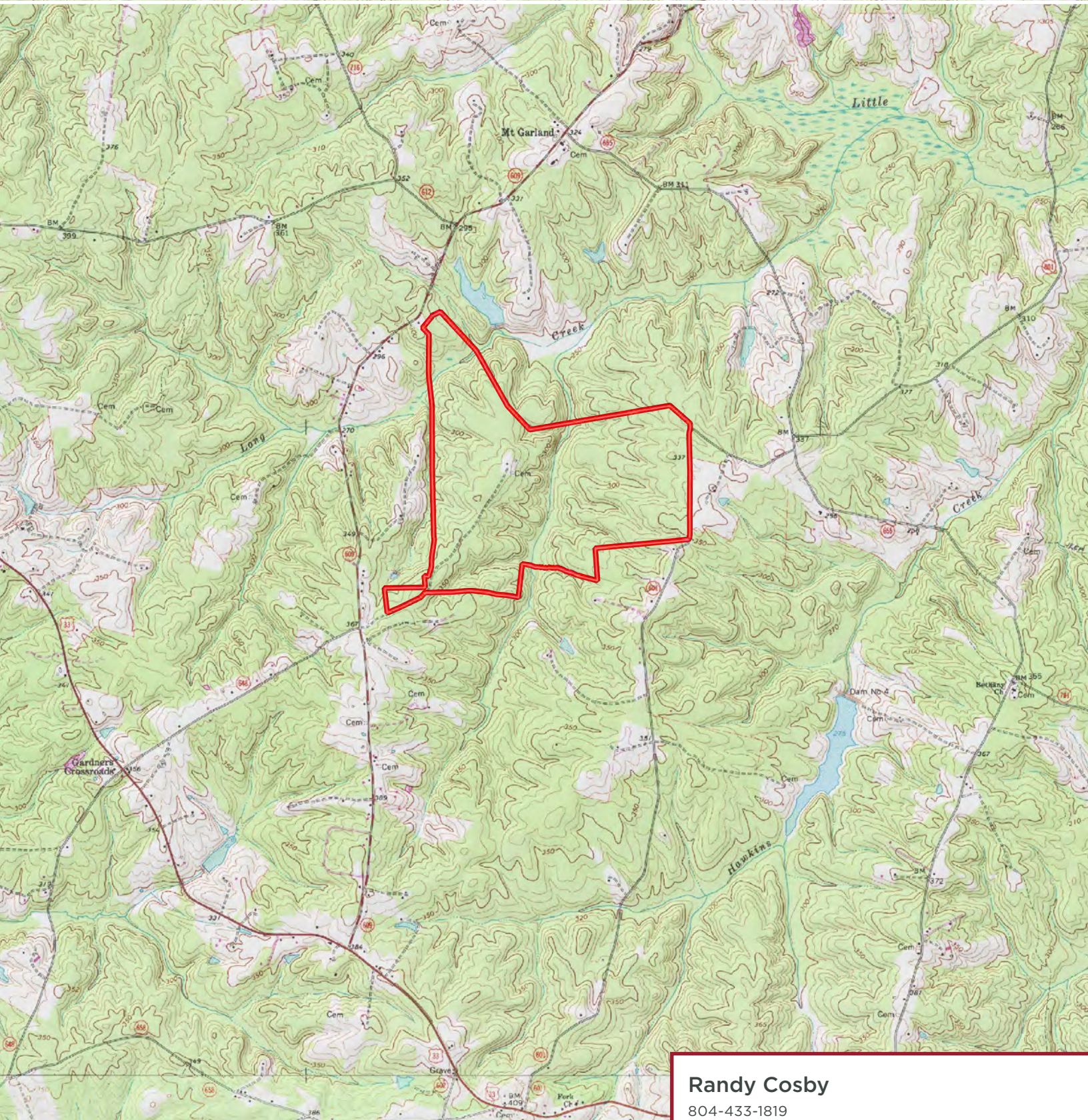
804-433-1819

rcosby@commonwealthland.com

Chris Jenkins

804-228-4928

cjenkins@commonwealthland.com



Randy Cosby

804-433-1819

rcosby@commonwealthland.com

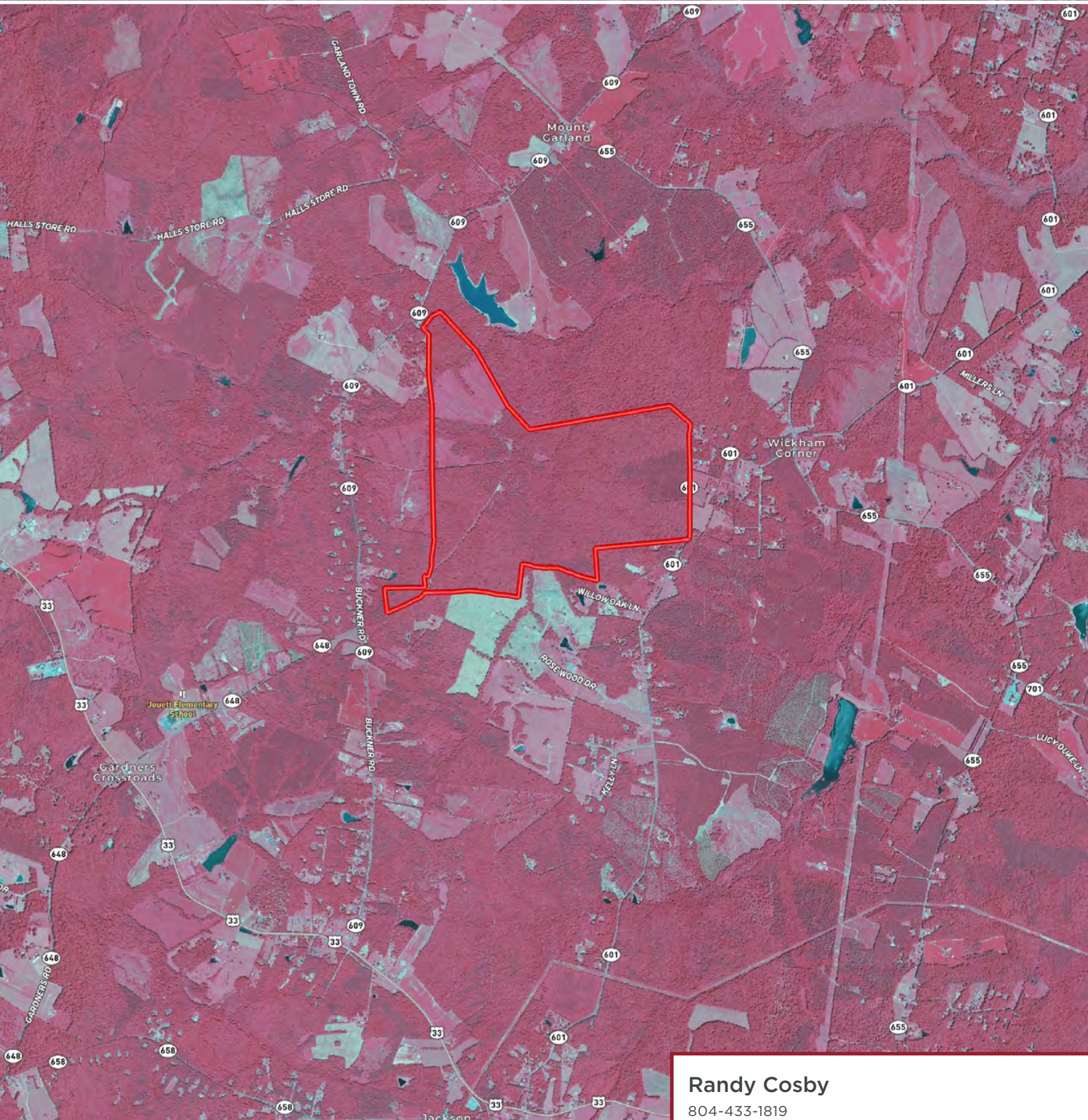
Chris Jenkins

804-228-4928

cjenkins@commonwealthland.com

**WICKHAM ROAD
BUMPASS, VA 23024**

**FOR SALE | 577± ACRES
LOUISA COUNTY, VA
Price: \$1,900,000 (\$3,292/acre)**



Randy Cosby

804-433-1819
rcosby@commonwealthland.com

Chris Jenkins

804-228-4928
cjenkins@commonwealthland.com