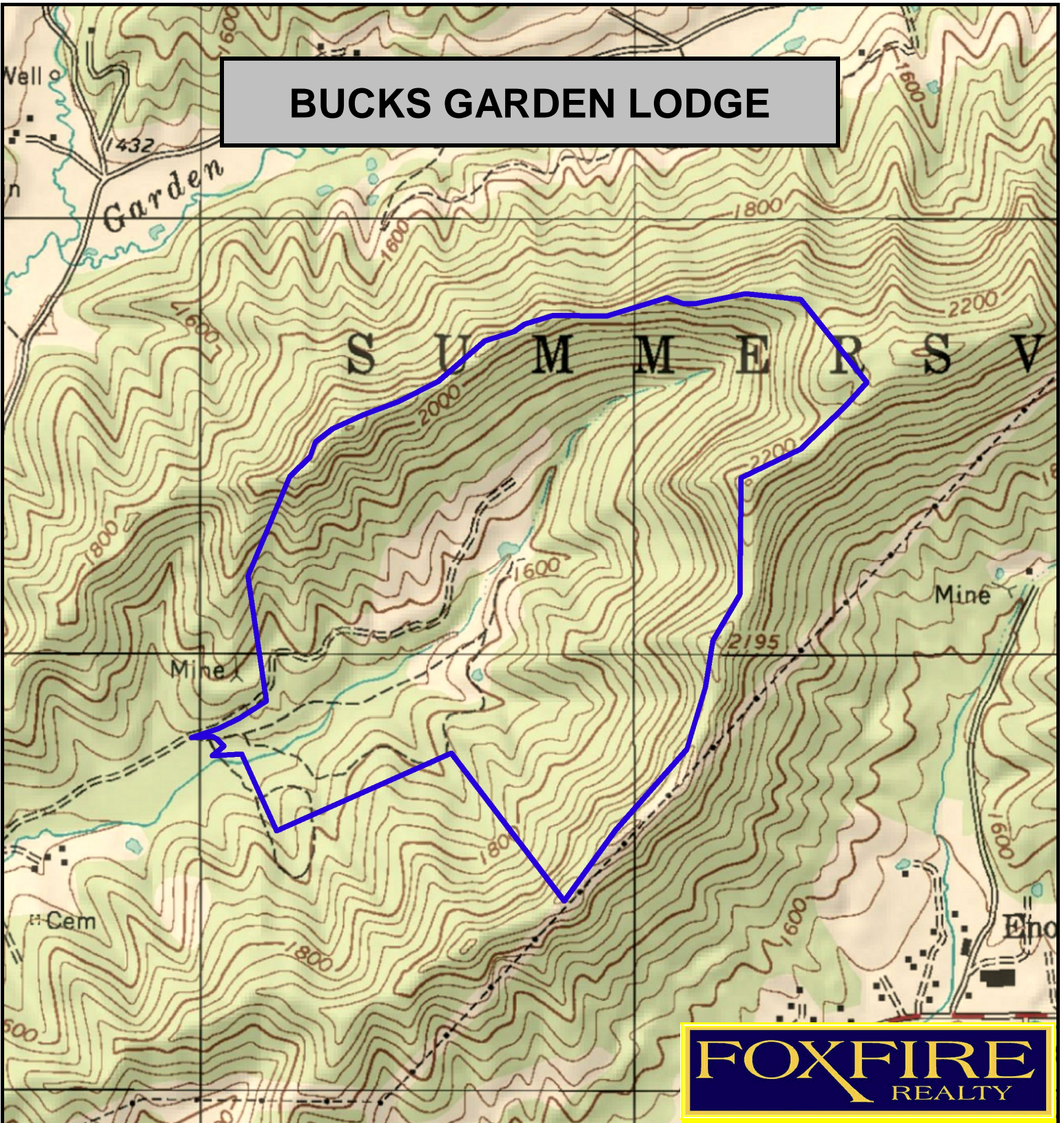


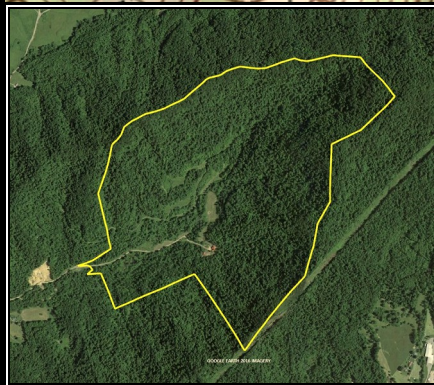
BUCKS GARDEN LODGE



FOX FIRE
REALTY

BUCKS GARDEN LODGE, Nicholas County, WV (topographic map)
Elevation Range: 1480' - 2320' +/- Google Coordinates:
LAT 38.316188 (N), LON -80.912222 (W)
This map is for general location purposes only. Consult a licensed
land surveyor for actual boundary location and acreage.

RICHARD GRIST, Broker - Auctioneer - Forester
304.646.8837 Richard@Foxfirenation.com
WWW.FOXFIRENATION.COM



FOR TOPO MAP

SCALE 1:12000

1 INCH = 1,000 FT.

