



The S 7 Ranch +/-89.3 Acres



This ranch is a rare find! Highway Frontage. Set up and ready to enjoy with cabin, blinds and feeders!

Located in central Edwards County just a short 12 mile drive from Rocksprings

Highway frontage on RR674

3/1, +/-865sqft cabin with all the comforts of home located on hilltop with beautiful views

Furnished, All appliances, Electricity, Fully functional bath

Sophisticated water catch system +/-200sqft front composite deck +/-240sqft storage shed

4 hunting blinds, 2 protein feeders, 5 corn feeders

3 Honda ATVs

Water storage tank and watering trough centrally located on property

Pond

Heavily wooded, rolling terrain with large seasonal creek bed at south end of property

Areas of topsoil with minimal rock for food plot opportunities

Several Indian mounds where artifacts have been found

Spot clearing has opened up nice hunting areas

Great internal road system

Whitetail, turkey, hog, axis, aoudad

Wildlife exempt taxes

\$375,000

Listing #29

Western Hill Country Realty

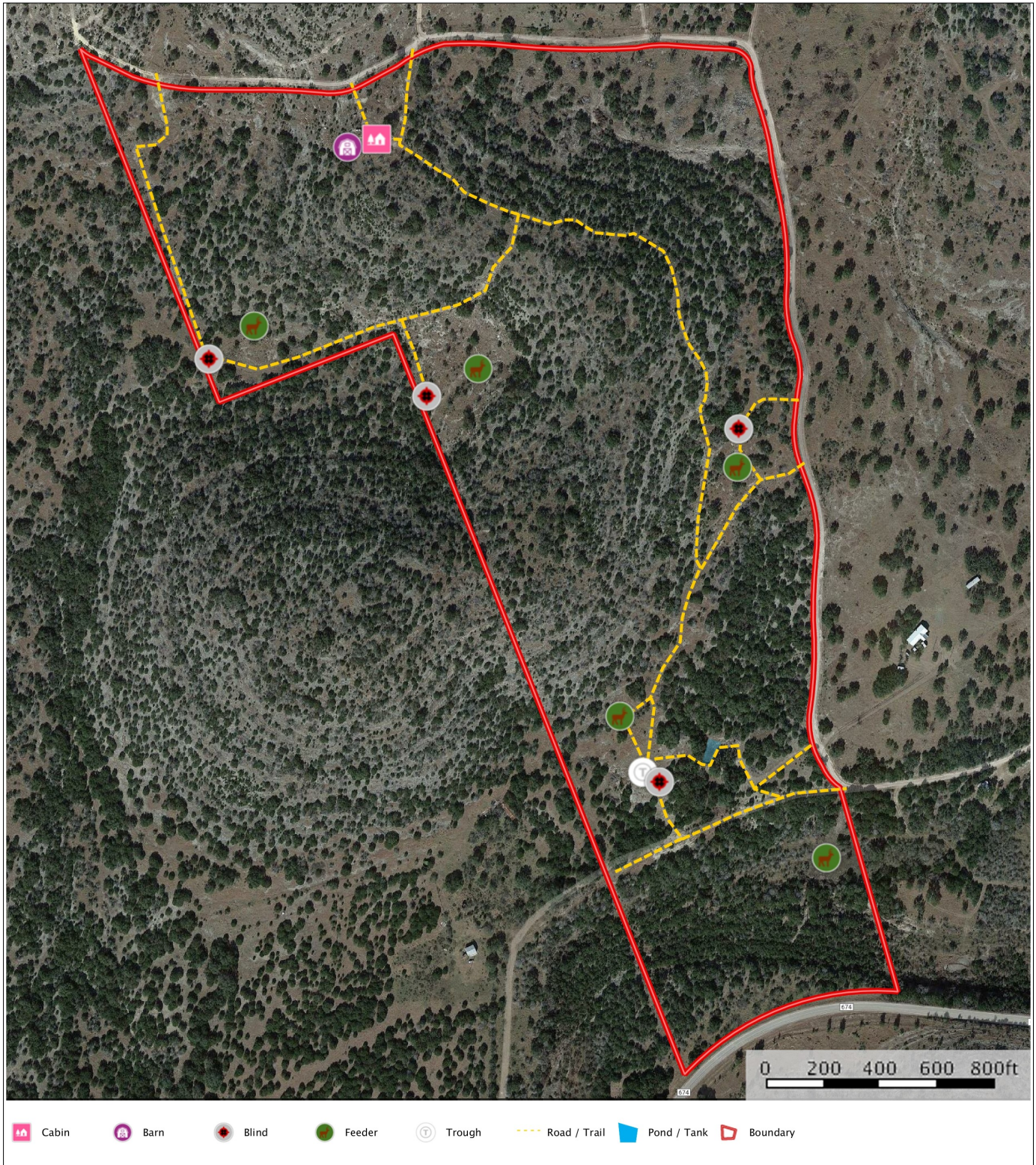
www.westernhillcountryrealty.com

info@westernhillcountryrealty.com

830-683-4435



The S 7 Ranch +/-89.3 Acres



Western Hill Country Realty

www.westernhillcountryrealty.com

info@westernhillcountryrealty.com

830-683-4435



The S 7 Ranch +/-89.3 Acres



Western Hill Country Realty

www.westernhillcountryrealty.com

info@westernhillcountryrealty.com

830-683-4435