

LAND FOR SALE

ERRON PASTURE DAWSON COUNTY



Location:

8 miles north and 5 miles east of Cozad.

**Legal
Description:**

NW1/4 Section 30-T12N-R22W of the 6th P.M., Dawson County, Nebraska.

**Property
Description:**

Dawson County Assessor indicates a total of 159.62 acres. Farm consists of good quality hardland pasture.

Livestock

Water:

Provided by one well equipped with windmill and one well equipped with an electric submersible.

Soils:

Soils consist of Uly-Coly, Uly, and Hord silt loams, with slopes ranging from 0-30%.

Taxes:

2019 Real Estate Taxes - \$2,592.60

List Price:

\$250,000

Comments:

Productive hardland pasture which has excellent location, along with good fences, and good livestock water availability.

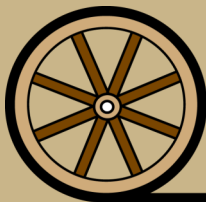
Contact:

**Kent Richter; Listing Agent 308-627-6465 or kent@agriaffiliates.com
Agri Affiliates—Providing Farm, Ranch Real Estate Services**



Kent Richter
Listing Agent

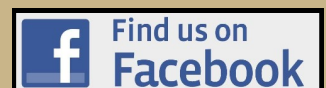
Offered Exclusively By:

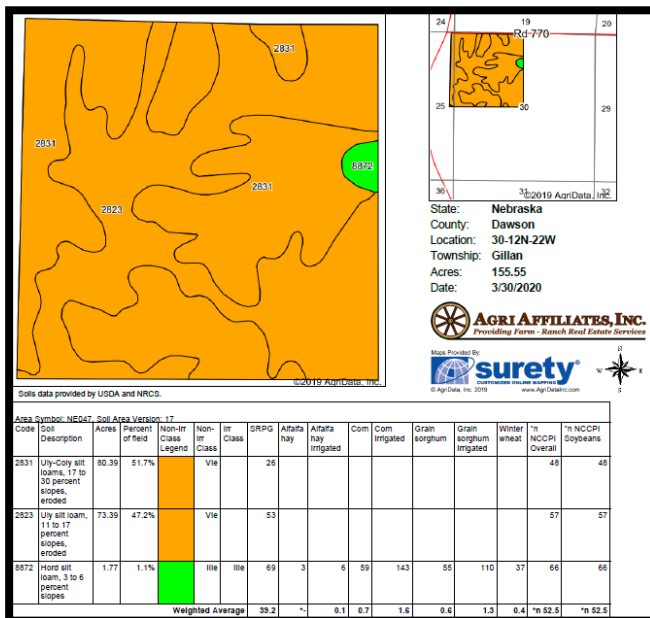
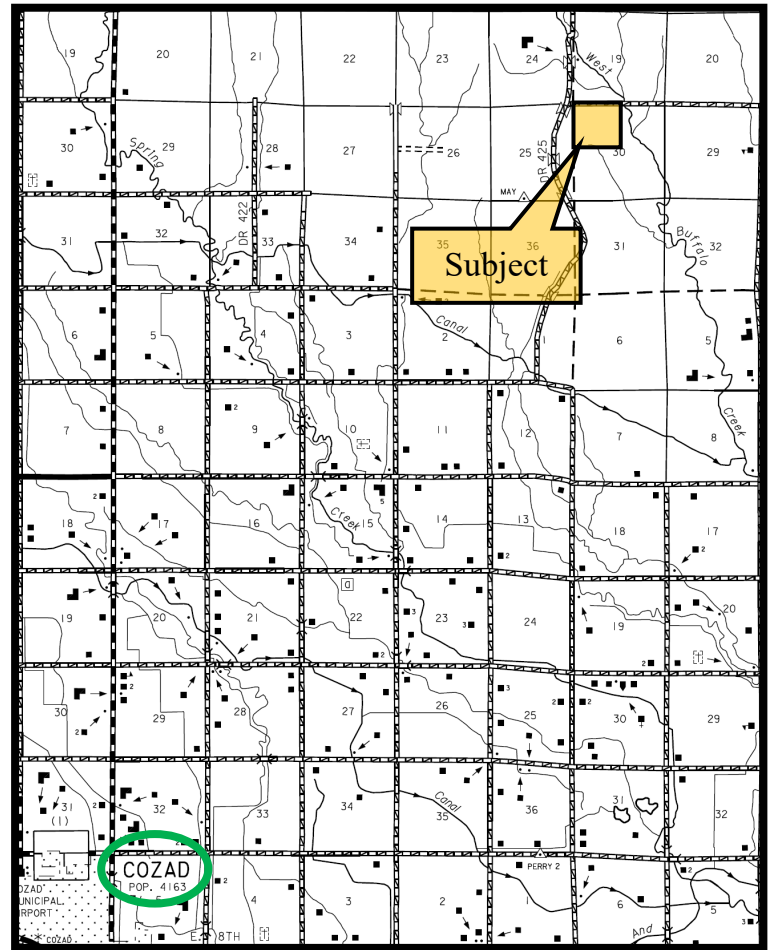


AGRI AFFILIATES, INC.
Providing Farm - Ranch Real Estate Services

KEARNEY OFFICE
P O Box 1390
2418 Hwy 30 E
Kearney, NE 68848-1390
www.agriaffiliates.com
(308) 234-4969
Fax (308) 236-9776

Information contained herein was obtained from sources deemed reliable. We have no reason to doubt the accuracy, but the information is not guaranteed. Prospective Buyers should verify all information. All maps provided by Agri Affiliates, Inc. are approximations only, to be used as a general guideline, and not intended as survey accurate. As with any agricultural land, this property may include noxious weeds. Agri Affiliates, Inc. and all agents are acting as Agent of the Seller.





AGRI AFFILIATES, INC.
 Providing Farm - Ranch Real Estate Services