



LAND AVAILABLE FOR SALE

298.83± Acres ■ Kern County, CA



Michael T. Anchordoquy, AAC ■ Principal ■ 661 616 3577 ■ manchor@asuassociates.com ■ CA RE #01380986
11601 Bolthouse Drive Suite 110 ■ Bakersfield, CA 93311 ■ 661 862 5454 main ■ 661 862 5444 fax

The information contained herein may have been obtained from sources other than ASU Commercial. We have not verified such information and make no guarantees, warranties or representations about such information. It is your responsibility to independently confirm its accuracy and completeness prior to purchasing/leasing the property.

LAND AVAILABLE FOR SALE

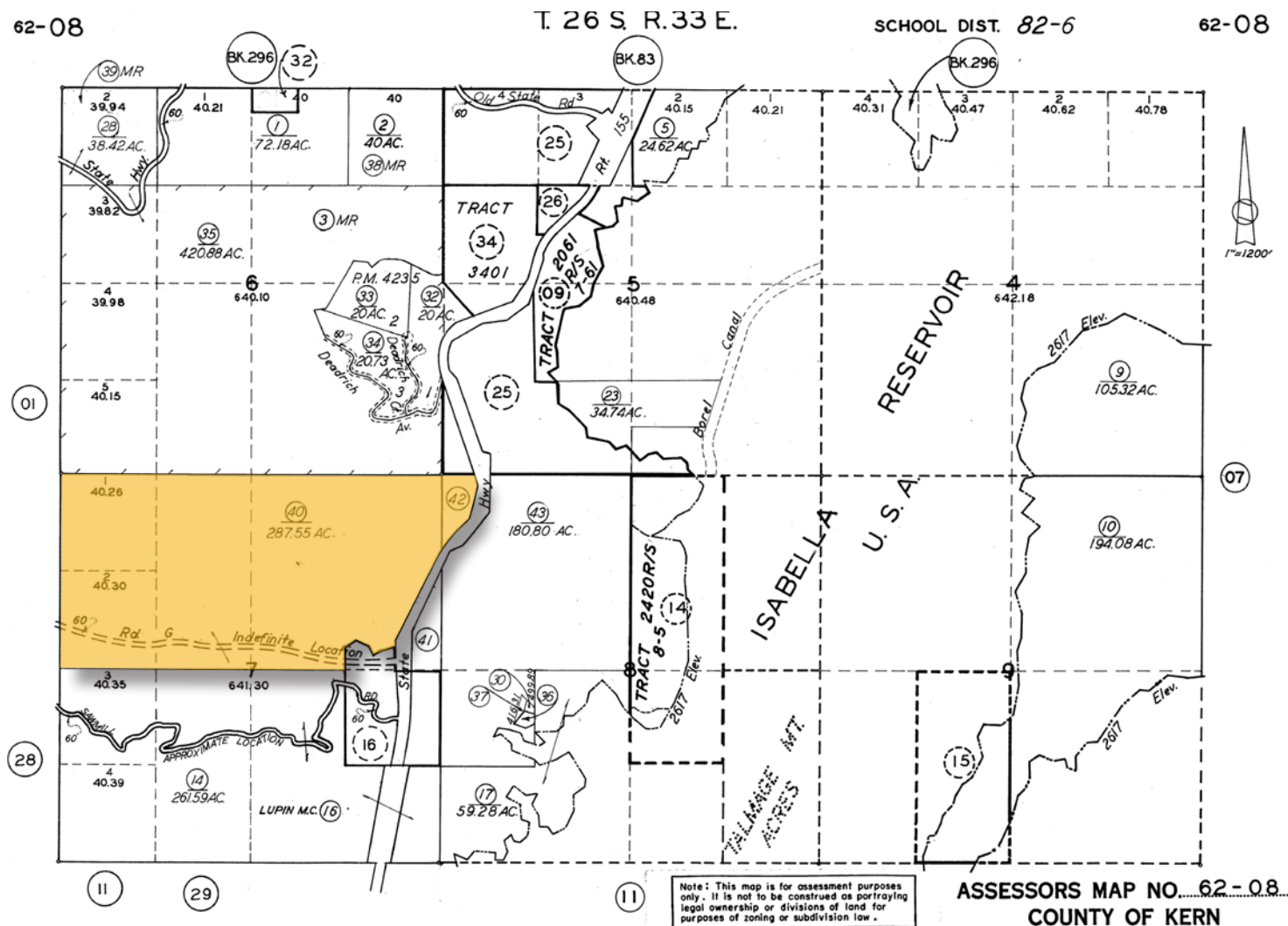
298.83± Acres ■ Kern County, CA

Property Profile

Size	298.33± Acres
Assessor's Parcel Numbers	062-080-40 & 42
Location	West side of Highway 155, approximately ½ mile south of Wofford Heights
Legal Description	Portion of the North ½ of Section 7 and a portion of the Northwest ¼ of Section 8 T.26S R.33E
Zoning	E(20) – Estate 20 Acres
Present Use	Native Land
Utilities	No utilities connected to the site
Water	No water source
Mineral Rights	Mineral Rights are excluded from the sale
Asking Price	\$208,831 or \$700/acre. Additional property being marketed adjacent and surrounding. Contact Listing Agent for more information.

298.83± Acres ■ Kern County, CA

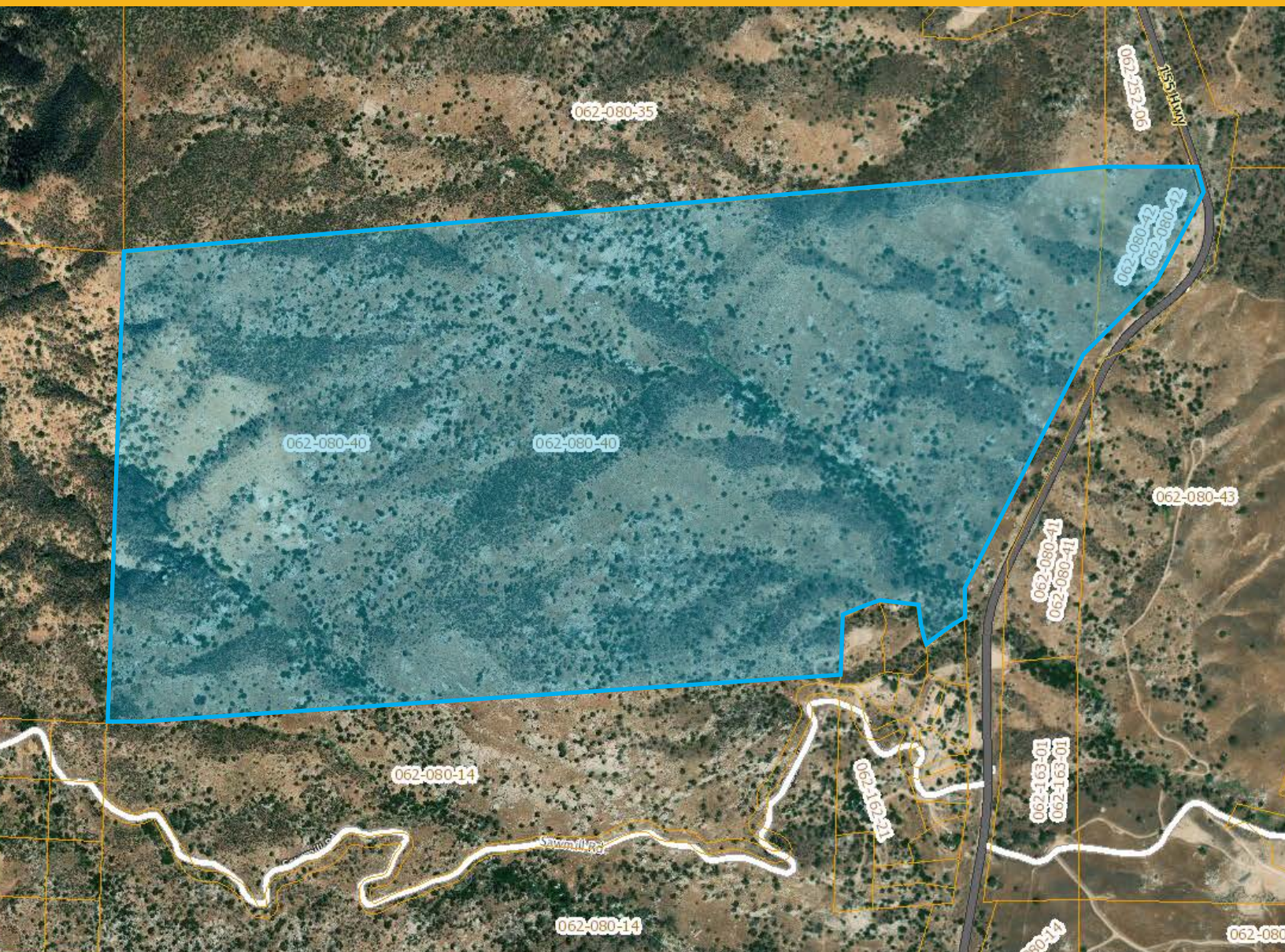
Assessor's Parcel Map: 062-080-40 & 42



LAND AVAILABLE FOR SALE

298.83± Acres ■ Kern County, CA

Kern County GIS Aerial



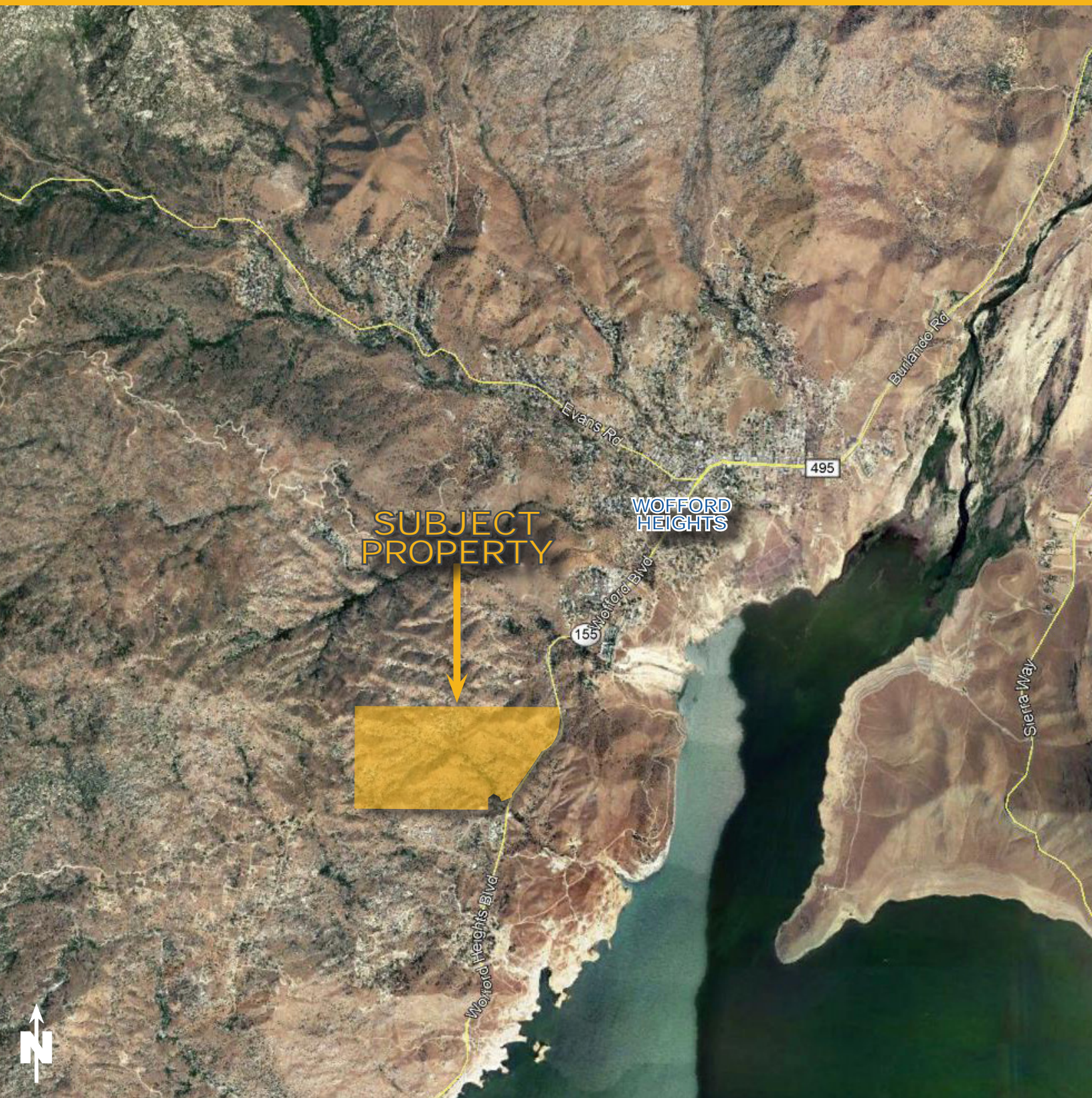
Michael T. Anchordoquy, AAC ■ Principal ■ 661 616 3577 ■ manchor@asuassociates.com ■ CA RE #01380986
11601 Bolthouse Drive Suite 110 ■ Bakersfield, CA 93311 ■ 661 862 5454 main ■ 661 862 5444 fax



LAND AVAILABLE FOR SALE

298.83± Acres ■ Kern County, CA

Aerial Map



Michael T. Anchordoquy, AAC ■ Principal ■ 661 616 3577 ■ manchor@asuassociates.com ■ CA RE #01380986
11601 Bolthouse Drive Suite 110 ■ Bakersfield, CA 93311 ■ 661 862 5454 main ■ 661 862 5444 fax



298.83± Acres ■ Kern County, CA