

# ±128 Acres For Sale

Saluda River Heritage Tract



\$864,000



## Brothers Road | Easley, SC

- Rolling Hills with established food plots
- Numerous Hilltop homesites
- Approximately 127.8 Acres
- Listing Price : \$6,750 per acre
- Approximately 3,000 feet of frontage on the South Saluda River
- 5+ Acre Wetland / Duck Pond
- Tremendous hunting and fishing opportunities (deer, turkeys, ducks, bear, bass, catfish, bream, and trout to name a few species)
- Pickens County Tax Map #'s 5134-00-93-2546 & 5134-00-92-7662
- Approximately 4 Miles to Downtown Travelers Rest, roughly 10 -15 minute drive through the foothills of South Carolina.
- Located just 25 minutes from the heart of downtown Greenville



Map updated: Tuesday, March 31, 2020. This information submitted is not guaranteed. Although obtained from reliable sources, all information should be confirmed prior to use or reliance upon the information. This document may not be reproduced in whole or in part without the express written consent.

✉ William "Tripp" Taylor, III ✉ Timothy "Dallas" Wright  
+1 336 260 5523 +1 843 505 2644  
ttaylor@naiearlefurman.com dwright@naiearlefurman.com

No Warranty Or Representation, Express Or Implied, Is Made As To The Accuracy Of The Information Contained Herein, And The Same Is Submitted Subject To Errors, Omissions, Change Of Price, Rental Or Other Conditions, Prior Sale, Lease Or Financing Or Withdrawal Without Notice, And Of Any Special Listing Conditions Imposed By Our Principals No Warranties Or Representations Are Made As To The Condition Of The Property Or Any Hazards Contained Therein Are Any To Be Implied.

📍 101 E Washington St  
Greenville, SC 29601  
naief.com



# Property Description

00 Brothers Road Easley, SC 29640



## Property Overview

The Saluda River Heritage Tract is a 128 acre family legacy property that is being offered for the first time. Originally a land grant from King George which has been family owned since before the revolution. The property stretches for roughly 3,000 feet along the South Saluda River with multiple tributaries winding through the property interior. A well maintained road system allows immediate access off of Brothers Road with frontage available on Hunts Bridge Road as well. The main property access road is bordered by beautiful stands of mature hardwoods, ducks ponds, & hill top vistas. Wildlife is thriving, with more than 5 acres of beaver ponds, wood ducks & local mallards frequent the property daily. Other wildlife include a large turkey population, deer, small mouth bass, trout, and even bears. The changing topographies of this property provide privacy despite being so close to Greenville. A unique escape for all who enjoy the outdoors.

✉ William "Tripp" Taylor, III  
+1 336 260 5523  
ttaylor@naiearlefurman.com

✉ Timothy "Dallas" Wright  
+1 843 505 2644  
dwright@naiearlefurman.com

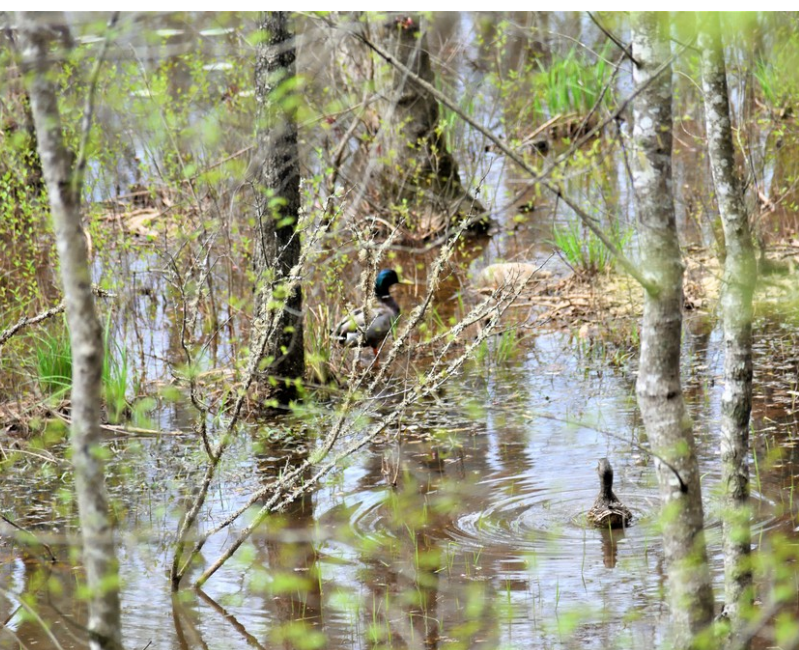
No Warranty Or Representation, Express Or Implied, Is Made As To The Accuracy Of The Information Contained Herein, And The Same Is Submitted Subject To Errors, Omissions, Change Of Price, Rental Or Other Conditions, Prior Sale, Lease Or Financing Or Withdrawal, Without Notice, And Of Any Special Listing Conditions Imposed By Our Principals No Warranties Or Representations Are Made As To The Condition Of The Property Or Any Hazards Contained Therein Are Any To Be Implied.





# Property Photos

00 Brothers Road Easley, SC 29640



**William "Tripp" Taylor, III**  
+1 336 260 5523  
ttaylor@naiearlefurman.com



**Timothy "Dallas" Wright**  
+1 843 505 2644  
dwright@naiearlefurman.com

No Warranty Or Representation, Express Or Implied, Is Made As To The Accuracy Of The Information Contained Herein, And The Same Is Submitted Subject To Errors, Omissions, Change Of Price, Rental Or Other Conditions, Prior Sale, Lease Or Financing Or Withdrawal Without Notice, And Of Any Special Listing Conditions Imposed By Our Principals No Warranties Or Representations Are Made As To The Condition Of The Property Or Any Hazards Contained Therein Are Any To Be Implied.





# Location

00 Brothers Road Easley, SC 29640



✉ William "Tripp" Taylor, III  
+1 336 260 5523  
ttaylor@naiearlefurman.com

✉ Timothy "Dallas" Wright  
+1 843 505 2644  
dwright@naiearlefurman.com

No Warranty Or Representation, Express Or Implied, Is Made As To The Accuracy Of The Information Contained Herein, And The Same Is Submitted Subject To Errors, Omissions, Change Of Price, Rental Or Other Conditions, Prior Sale, Lease Or Financing Or Withdrawal Without Notice, And Of Any Special Listing Conditions Imposed By Our Principals No Warranties Or Representations Are Made As To The Condition Of The Property Or Any Hazards Contained Therein Are Any To Be Implied.

