



RUDIO CREEK RANCH

RUDIO CREEK RANCH | KIMBERLY, OREGON

www.NAIcascade.com | +1 541 771 8260 | www.WilburnRanchBrokerage.net | +1 541 620 0488

Property Summary



RUDIO CREEK RANCH | KIMBERLY, OREGON

\$9,750,000

One of the most premier hunting/recreation ranches in the West. Located just outside of Kimberly, and 130 miles east of Bend.

Description

- 6,120 acres (ten tax lots)
- Adjacent to 8,200 acres of BLM.
- 4 homes including 6 bed/6 bath lodge.
- 3 barns, shop, and bunkhouse.
- 21-stall horse barn with 80x80 arena, office and tack room.
- 150x250 roping arena and 100' round corral.
- Year-round Rudio Creek runs 3.5 miles through the ranch. Loaded with trout.
- Fully operational natural/premium beef cattle ranch.
- 200 acres of water rights .
- Trophy bulls and bucks harvested from this ranch regularly.
- Rudio Creek is spawning grounds for steelhead, spring chinook and trout.
- 17 acre reservoir has bass, crappie and blue gill.
- Upland fowl, chukars, quail and pheasant reside on the property.
- Northside Unit: 5 bulls, 5 bucks LOP tags.
- Ability to create a 3,000 ft plus runway.



Improvements

- 6 bedroom, 6 bathroom lodge home built in 2003. Open kitchen, large living room featuring custom river-rock fireplace, wood floors, expansive windows to enjoy the territorial views.
- Two bedroom, two bathroom manufactured home with deck and mudroom.
- Newer 4 bedroom manufactured home with deck and mudroom.
- 3 bedroom, two bathroom ranch house, recently upgraded.



Water

- Rudio Creek flows year-round through 3.5 miles of the property.
- Gilmore Creek is seasonal.
- Approximately 200 acres of water rights to irrigate hay fields and pastures with wheel lines.
- +/- 17 acre reservoir with bass, crappie and blue gill.
- Numerous ponds and springs on the property, many developed for stock and wildlife water.



Recreation

This ranch has it all. Trophy bulls and bucks have been harvested from the ranch. Located in the Northside Unit with 5 bull, and 5 buck LOP tags.

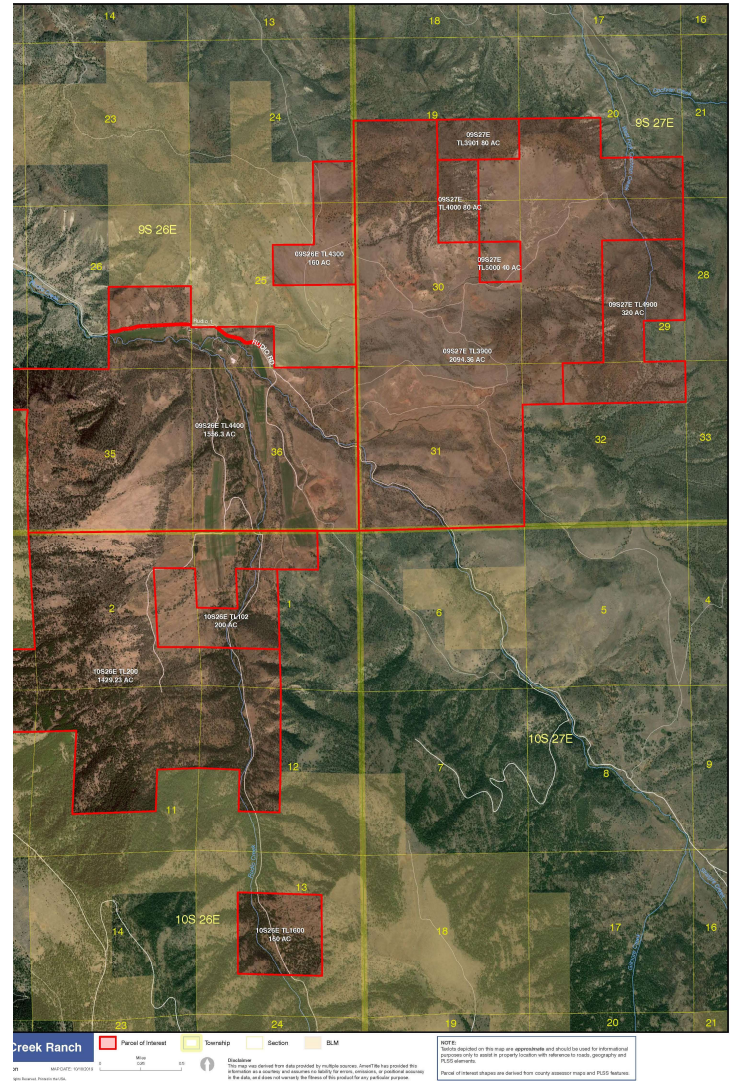
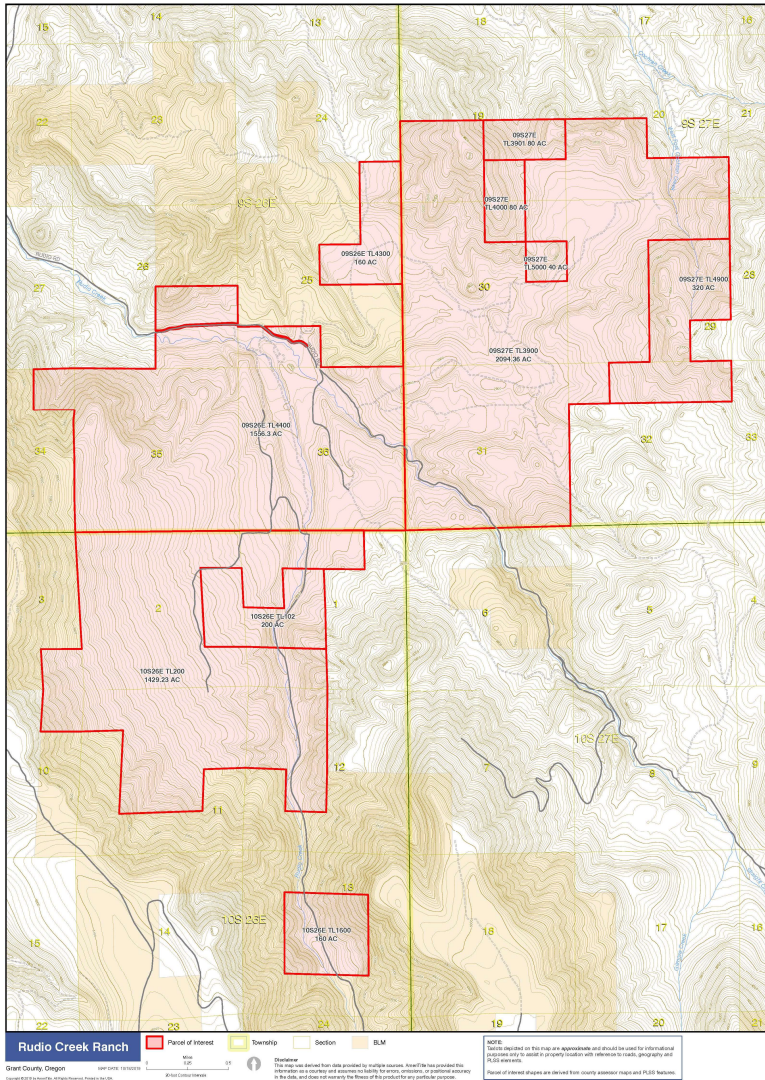
The large reservoir is loaded with bass, crappie and blue gill. The reservoir is also host to great goose and duck hunting. Both chukars and quail reside on the property as well.



Notable links

Boone & Crockett Club: boone-crockett.org
Pope & Young Club: pope-young.org
Oregon Record Book: nwbiggame.com
Grant County Oregon Live: gcoregonlive.com

Topo & Aerial Map





Grant County Oregon has been treasured in the heart of pioneers for over 150 years and it continues to be for those who still dare to dream. It defines adventure. Grant County itself is nearly the size of Connecticut. Its boundaries contain all the headwaters for the four forks of the John Day River. With such a vast abundance and diversity of natural resources.

Grant County was established in 1864 from fragmented Wasco and Umatilla counties. After Gold was discovered in 1862, it is estimated that 1,000 miners camped in Grant County's Canyon Creek. This increased population created a need for county government. Since the 1930s, the city of John Day (65 miles from the property) has served as the main economic center of the county, and is host to the largest population in the county.

Most of Grant County is drained by the four forks of the John Day River, all of which have their headwaters in the county. The John Day River system drains some 7,900 square miles. It is the third longest free-flowing river in the lower 48 states and has more miles of federal "Wild and Scenic River" designation than any other river in the United States. The river system in Grant County includes the upper 100 miles of the Main Stem, all of the 112 miles of the North Fork, all 75 miles of the Middle Fork, and all 60 miles of the South Fork of the John Day River. From Grant County, the lower John Day River flows another 184 miles to its confluence with the Columbia River. The southeastern corner of the county includes headwaters of the Malheur and Little Malheur Rivers, which find their way to the Snake River.

Grant County enjoys a great deal of sunshine, with an estimated 200 days of clear sunny or mostly sunny days.