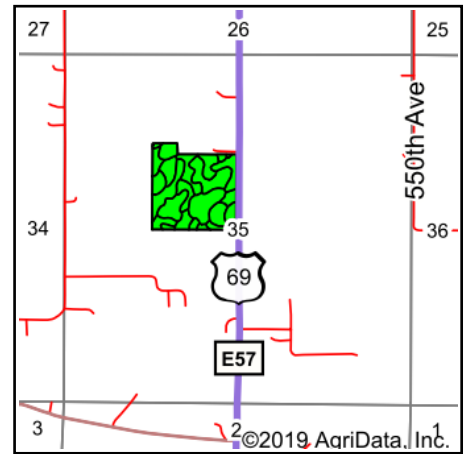
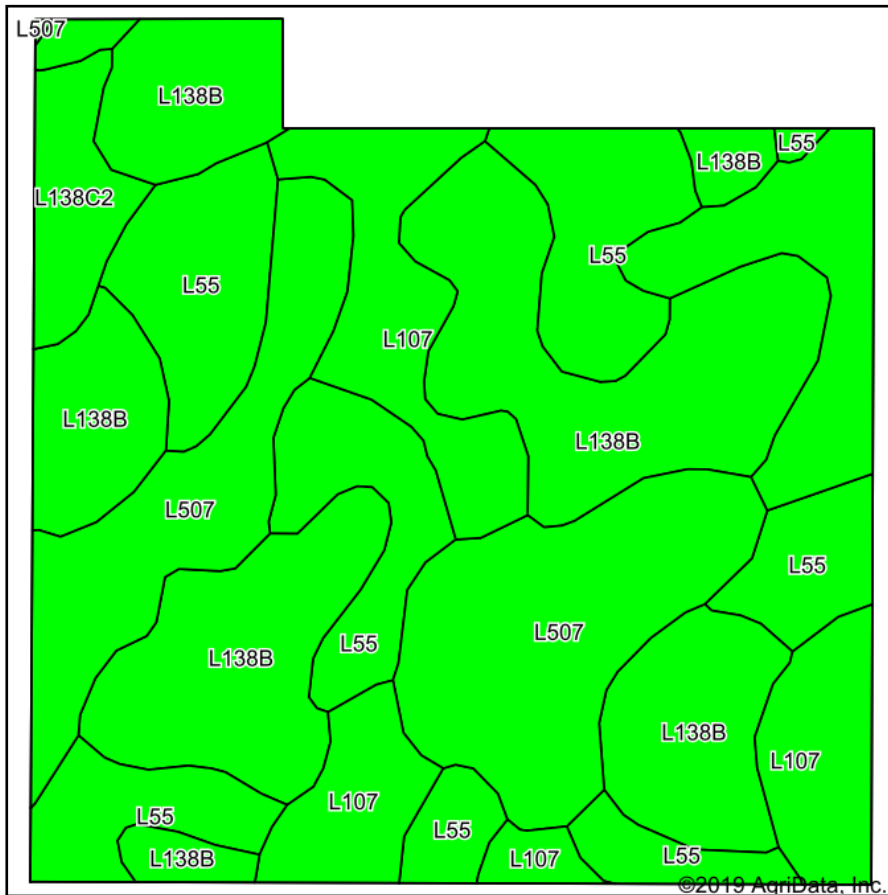


# Tillable Soils Map



State: **Iowa**  
 County: **Story**  
 Location: **35-83N-24W**  
 Township: **Washington**  
 Acres: **34.44**  
 Date: **11/21/2019**

**PC PEOPLES**  
 COMPANY  
 INNOVATIVE. REAL ESTATE. SOLUTIONS.

Maps Provided By:

**surety**  
 CUSTOMIZED ONLINE MAPPING  
 © AgriData, Inc. 2019 www.AgriDataInc.com



Area Symbol: IA169. Soil Area Version: 31

Code	Soil Description	Acres	Percent of field	CSR2 Legend	Non-Irr Class *c	CSR2**	*n NCCPI Overall
L138B	Clarion loam, Bemis moraine, 2 to 6 percent slopes	11.63	33.8%		Ile	88	79
L55	Nicollet loam, 1 to 3 percent slopes	8.13	23.6%		Ie	91	83
L107	Webster clay loam, Bemis moraine, 0 to 2 percent slopes	6.84	19.9%		Ilw	88	80
L507	Canisteo clay loam, Bemis moraine, 0 to 2 percent slopes	6.76	19.6%		Ilw	87	79
L138C2	Clarion loam, Bemis moraine, 6 to 10 percent slopes, moderately eroded	1.08	3.1%		Ille	83	60
<b>Weighted Average</b>						<b>88.4</b>	<b>*n 79.5</b>

\*\*IA has updated the CSR values for each county to CSR2.

\*n: The aggregation method is "Weighted Average using major components"

\*c: Using Capabilities Class Dominant Condition Aggregation Method

Soils data provided by USDA and NRCS.