

East Aberdeen Lake 509.16 Acres +/- Monroe County, MS



CONTACT:
J. PARKER SARTAIN
601.506.2398
psartain@sartainsheritage.com

Sartain's Heritage Properties
106 First Choice Drive
Madison, MS 39110
Phone: 601-856-2720
Fax: 601-853-6765
www.SartainsHeritage.com

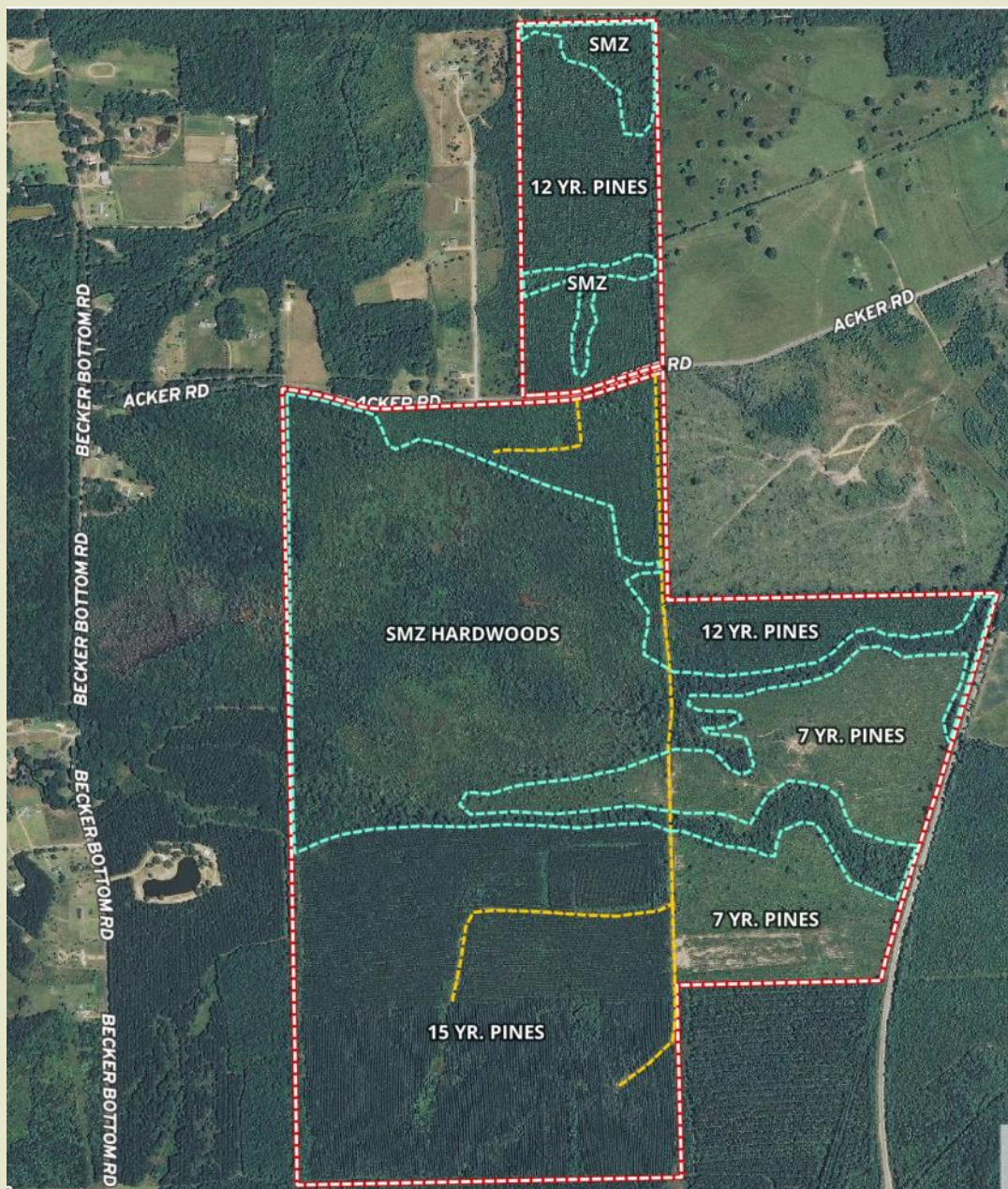
509.16 acres in S2, T14S, R19W and S35, T13S, R19W, Monroe County, MS fronting Acker Road.

The timber consists of approximately 69 acres of 9 year pine plantation, 140 acres of 17 year pine plantation and 188 acres of Hardwood Streamside Management Zones the bulk being along Halfway Creek creating a great wildlife travel corridor across the property.

Located just east of Aberdeen Lake, one mile west of the Monroe County Airport and only minutes from the towns of Aberdeen and Amory, make this a very accessible property for deer, duck and turkey hunting.

\$967,404—\$1900 per acre





All information contained herein is supplied by sources deemed reliable, but is not guaranteed by Sartain's Heritage Properties, its Brokers or Agents. Properties are subject to errors, omissions, correction, price change, prior sale or withdrawal without notice.