

LOCATION MAP

APPROXIMATE ACREAGE IN BURKE

TRACT 1 34.47 AC
TRACT 2 34.21 AC
TRACT 3 1.21 AC

TOTAL ACREAGE 69.89 AC

NOTES

1. THE PLAT CLOSURE OF THIS PLAT IS 0.000000'
2. THE COMPASS RULE WAS USED TO ADJUST THIS PLAT
3. THIS SURVEY WAS PERFORMED WITH A NOBIS DTM-440 TOTAL STATION AND A 100' STEEL TAPE
4. THIS SURVEY HAS BEEN CALCULATED FOR CLOSURE AND FOUND ACCURATE WITHIN 0.000000'
5. THE FIELD ANGLE CLOSURE IS 0.000000' PER ANGLE

FILE No. A-2407
Hour Filed 10:20 AM
Date Filed 11-16-99
David S. Day
Deputy Clerk Superior Court
Burke County, Georgia

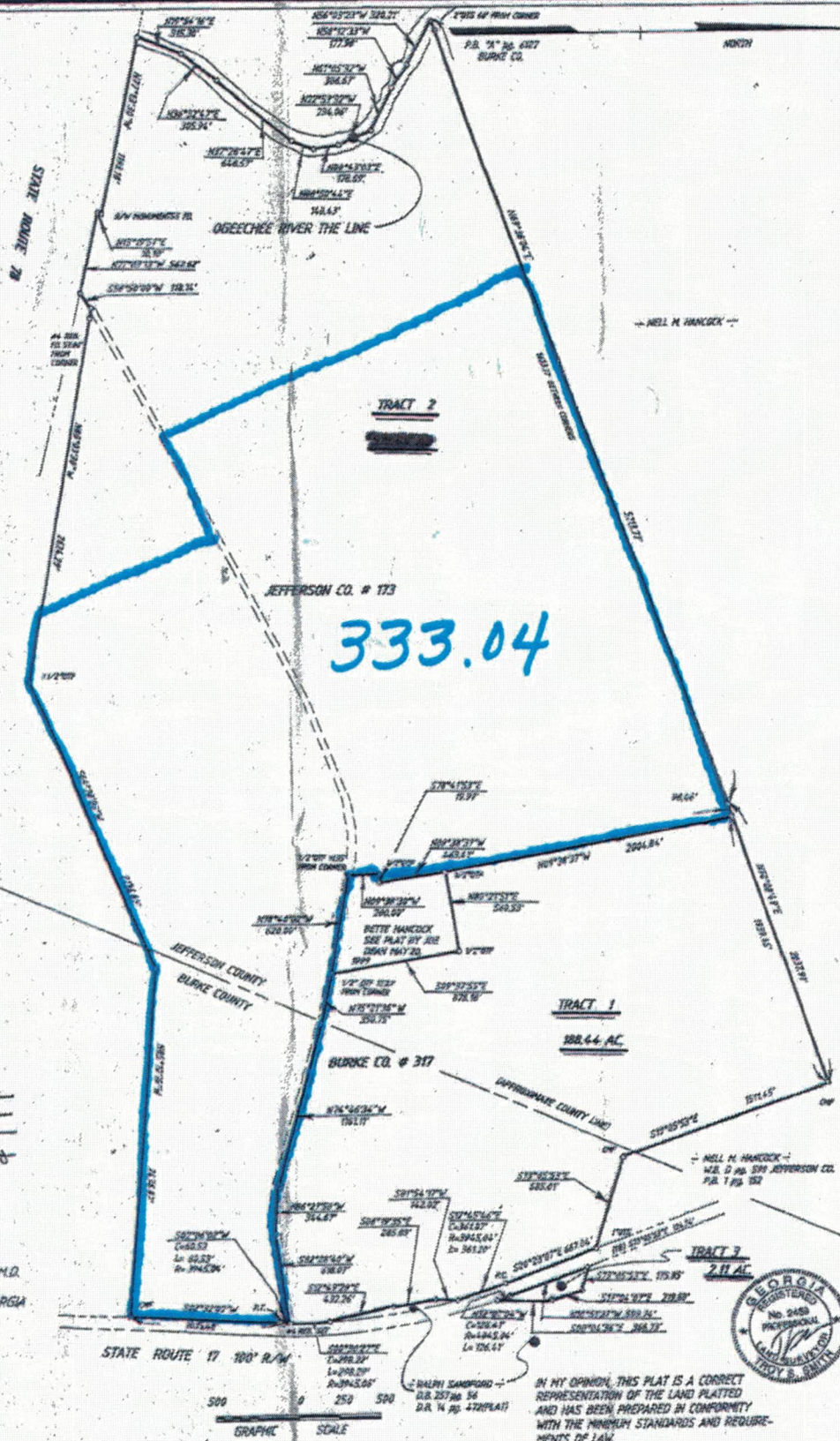
SURVEY for

PINE SOUTH INC.
JIMMY HANCOCK ESTATE
PROPERTY LOCATED IN THE T3rd. & 84TH. G.M.D.
BURKE COUNTY, & JEFFERSON COUNTY, GEORGIA

SCALE 1" = 500' JUNE 10, 1999

Prepared By

TROY SMITH & ASSOCIATES
13 HUNTINGTON PLACE
WAYNESBORO, GEORGIA



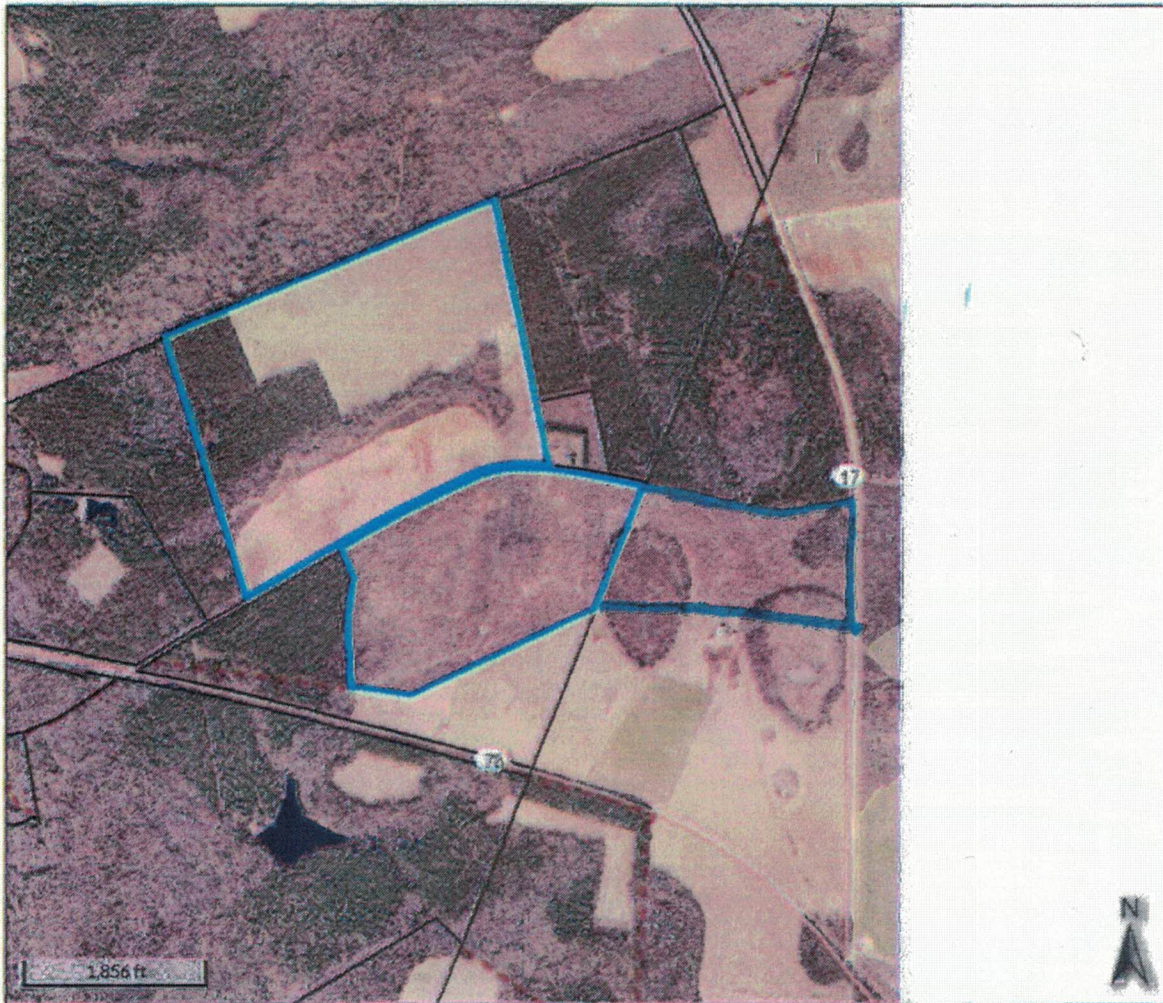
IN MY OPINION, THIS PLAT IS A CORRECT REPRESENTATION OF THE LAND PLATTED AND HAS BEEN PREPARED IN CONFORMITY WITH THE MINIMUM STANDARDS AND REQUIREMENTS OF LAW.





qPublic.net™




Jefferson County, GA



Overview



Legend

-  Parcels
-  Miscellaneous Link
-  Roads

* ONLY USE THE PEANUT BLOCK IF ALL PEANUTS ON TRACT HAVE SAME TYPE, INTENDED USE, IRRIGATION PRACTICE, & PRODUCER SHARES. MUST ENTER PEANUTS, ACREAGE PLANTED, & PLANTING DATE FOR EACH PEANUT FIELD. PEANUTS PLANTED ARE NOT PLANTED ON THE MAP.
Date Exported 3/3/2020

Crop: Peanuts
(Write in Corresponding Field on Map)

Variety/Type:
Runner Peanuts (RUN)
Southeast Spanish Peanuts (SPE)
Southwest Spanish Peanuts (SPW)
Valencia Peanuts (VAL)
Virginia Peanuts (VIR)

Intended Use:
Nut Peanuts (NP)
Green Peanuts (GP)
Hogged Peanuts (HP)

Tract Cropland: 73.76 acres			
CLU	Acres	HEL	Crop
1	73.76	UHEL	
2	4.61	UHEL	NC
3	33.46	UHEL	NC
4	33.53	UHEL	NC
5	48.06	UHEL	NC
6	0.96	UHEL	NC
7	13.94	UHEL	NC
8	7.43	UHEL	NC
9	133.71	NHEL	NC



View Determination Identifiers

- Responsible User
- Unlimited Restrictions
- Example Map Comparison
- Compliance Provisions

Tract Boundary Cropland Non-cropland CRP

If Same For ALL Fields On Tract
Producer Share: _____
Irrigation Practice: ☐ IRR ☐

USDA FSA maps are for FSA Program administration only. This map does not represent a legal survey or reflect actual ownership; rather it depicts the information provided directly from the producer and/or the NAIP imagery. The producer accepts the data 'as is' and assumes all risks associated with its use. The USDA Farm Service Agency assumes no responsibility for actual or consequential damage incurred as a result of any user's reliance on this data outside FSA Programs. Wetland identifiers do not represent the size, shape, or specific determination of the area. Refer to your original determination (CPA-026 and attached maps) for exact boundaries and determinations or contact NRCS.