

**SAN ANDREAS
COUNTRY ESTATE**
±340.24 AC - FOR SALE
CALAVERAS COUNTY
PURCHASE PRICE:
\$1,100,000



TRI *Outdoor Properties*

LAND BROKERAGE | Recreational · Agricultural · Conservation
A Division of TRI Commercial Real Estate Services, Inc.



The information in this document was obtained from sources we deem reliable; however, no warranty or representation, expressed or implied, is made as to the accuracy of the information contained herein.

Property Info ~ San Andreas Country Estate, Calaveras County, CA

Address: 3986 Hawver Road,
San Andreas, CA 95249

APN: 040-015-004; 040-015-001; 016-025-012

Zoning: U Unclassified

Elevation: Approximately 1,500 to 1,700 feet

Latitude: 38.233572

Longitude: -120.643379

MLS #: 20023094

Acres: ±340.24 Acres

Price: \$1,100,000

Improvements: 2 story 3 bedroom 2.5 bath contemporary home located on 340.24 acres. Large metal barn, covered RV storage, corrals, chicken coup & storage shed. Good well.

Terms: Cash or submit.



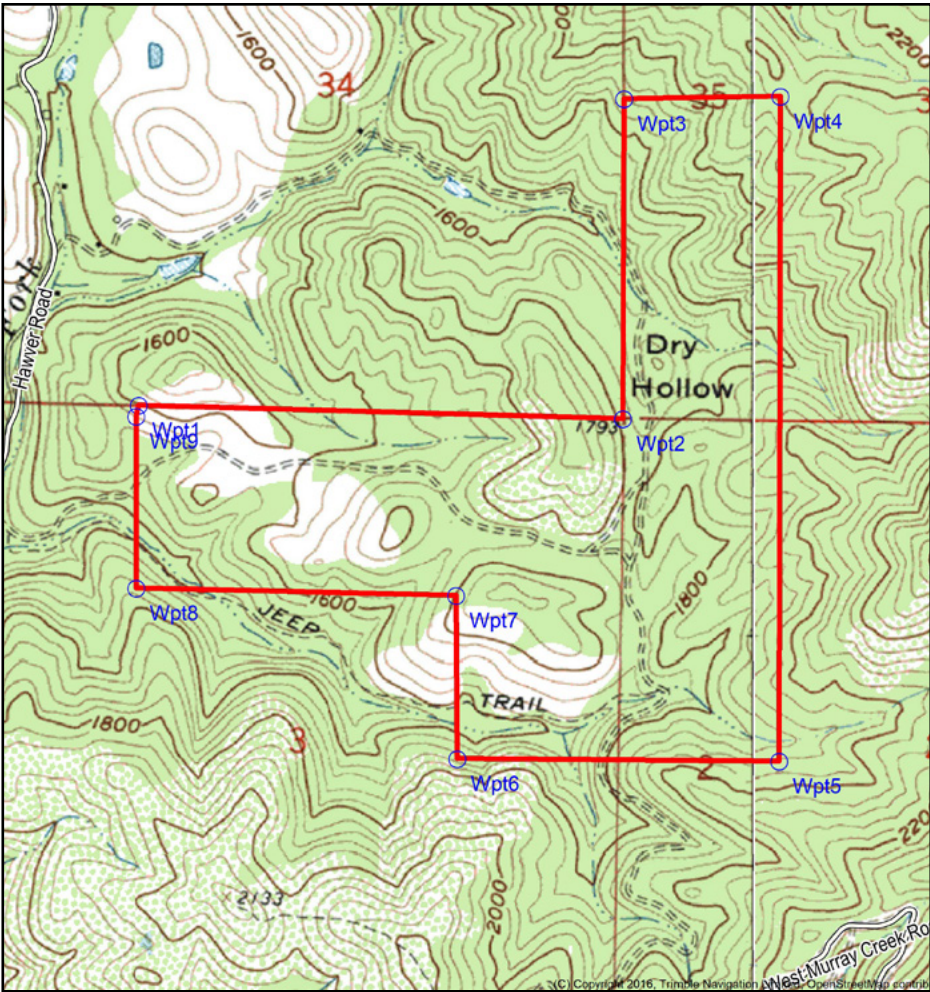
[Click Here for Video Tour](#)

Description: 2 story 3 bedroom 2.5 bath contemporary newer home located on 340 acres of picturesque land. Secluded yet close to services. Tile roof covered patio and nice upstairs balcony to watch the sunrise. Fenced for animals. Nice large barn, corrals, storage shed, chicken coup and covered RV storage. Excellent hunting opportunities for deer and other wildlife.

Directions: Located off Highway 49 between Mokelumne Hill and San Andreas. Take Gold Strike Hill Road off of Hwy 49 1.34 miles to Hawver Rd. Turn left and continue for 3.58 miles to the entrance of the property.

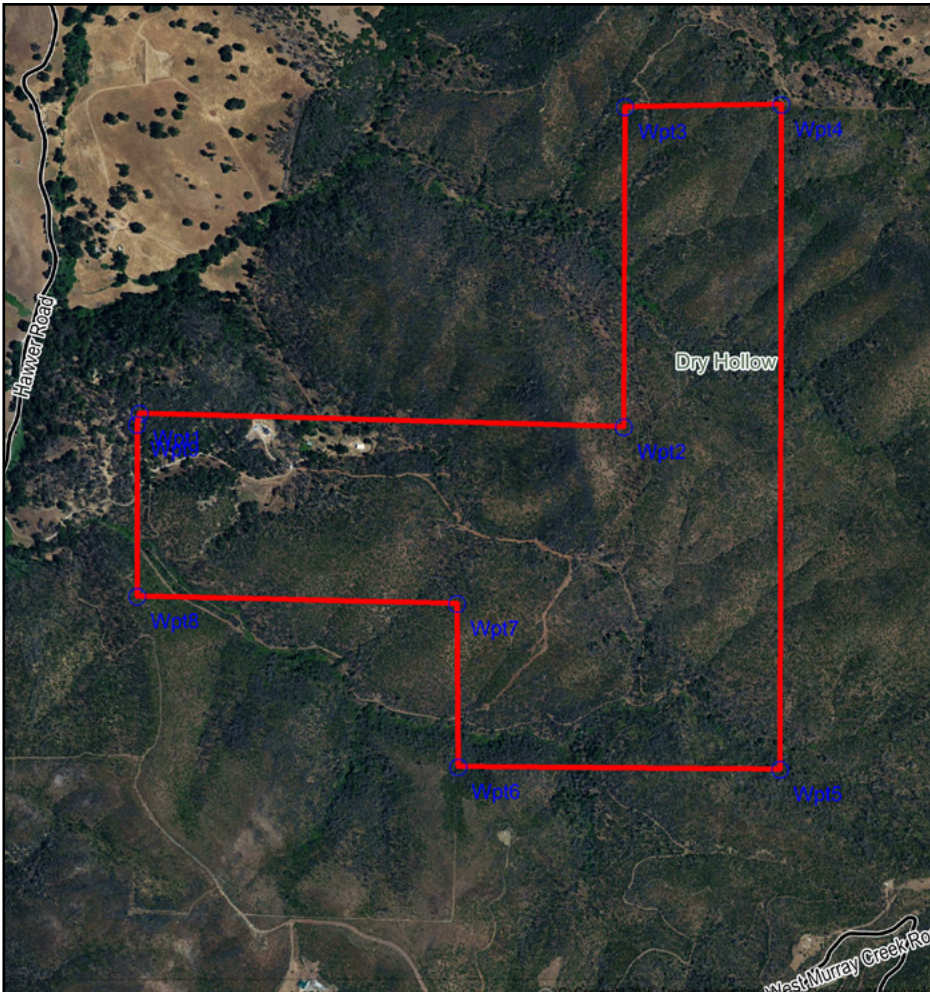
Property Maps ~ San Andreas Country Estate, Calaveras County, CA

Topo Map



DISCLAIMER: The information contained herein is as obtained by this broker from sellers, owners, or other sources. This information is considered reliable, neither this broker nor owners make any guarantee, warranty or representation as to correctness of any data or descriptions and the accuracy of such statements. The correctness and / or accuracy of any and all statements should be determined through independent investigation made by the prospective purchaser. Any offer for sale is subject to prior sale, errors and omissions, change of price, terms or other conditions or withdrawal from sale in whole or in part, by seller without notice and without liability of this broker.

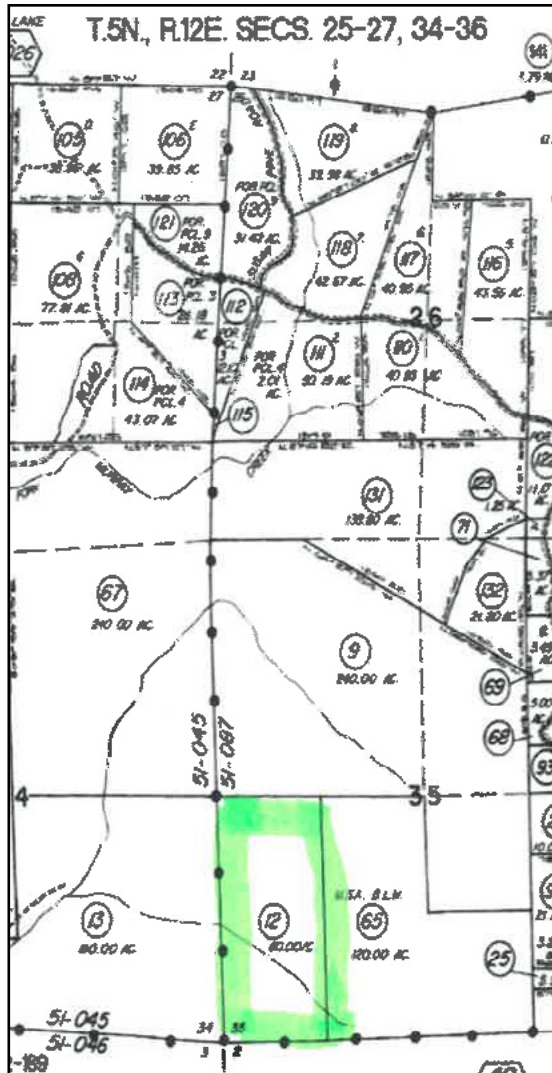
Aerial Map



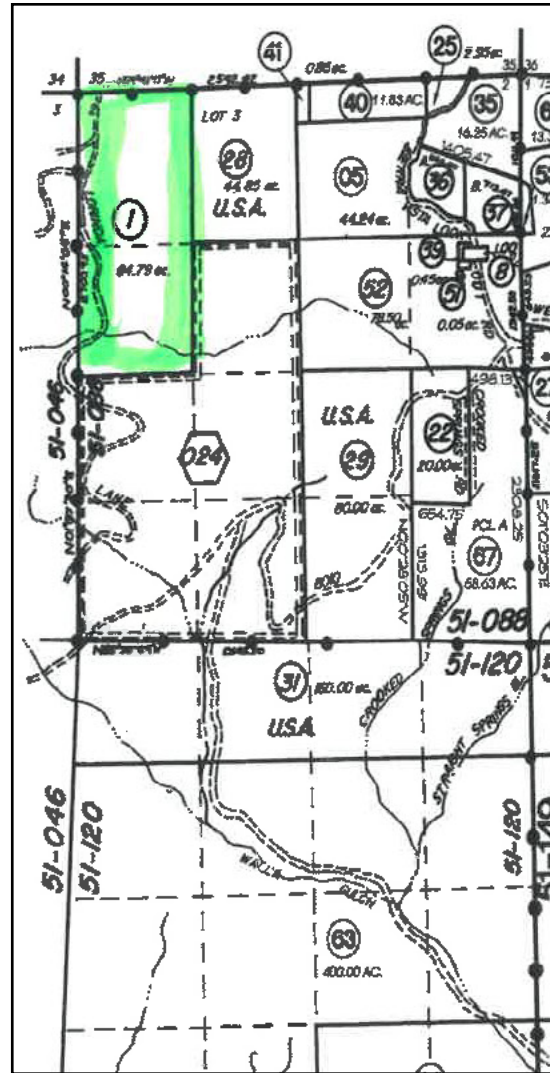
DISCLAIMER: The information contained herein is as obtained by this broker from sellers, owners, or other sources. This information is considered reliable, neither this broker nor owners make any guarantee, warranty or representation as to correctness of any data or descriptions and the accuracy of such statements. The correctness and / or accuracy of any and all statements should be determined through independent investigation made by the prospective purchaser. Any offer for sale is subject to prior sale, errors and omissions, change of price, terms or other conditions or withdrawal from sale in whole or in part, by seller without notice and without liability of this broker.

Parcel Maps ~ San Andreas Country Estate, Calaveras County, CA

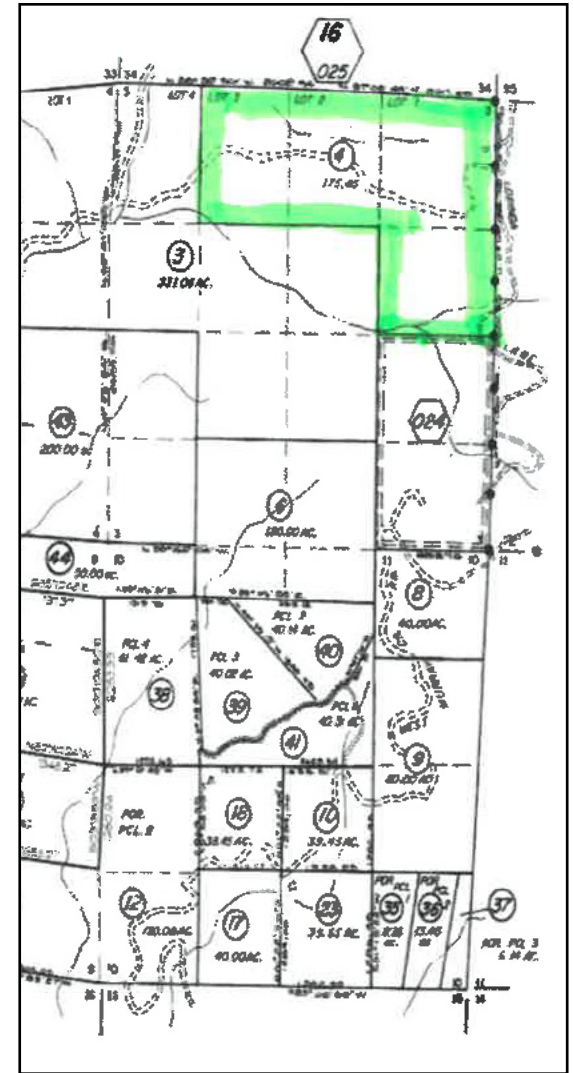
APN: 016-025-012
±80 ACRES



APN: 040-015-001
±84.79 ACRES



APN: 040-015-004
±175.45 ACRES



Property Photos ~ San Andreas Country Estate, Calaveras County, CA



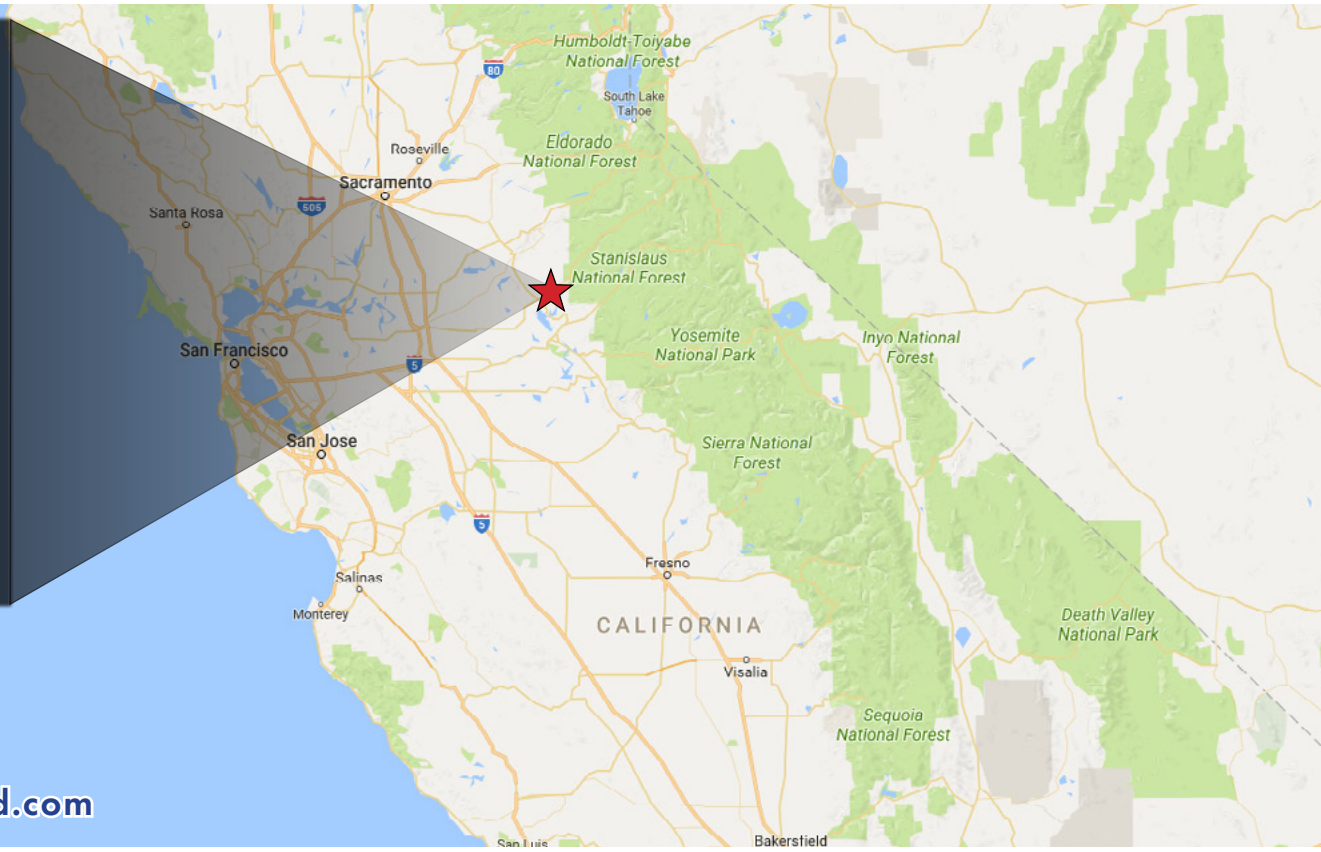
Property Photos ~ San Andreas Country Estate, Calaveras County, CA



Property Photos ~ San Andreas Country Estate, Calaveras County, CA



Property Summary ~ San Andreas Country Estate, Calaveras County, CA



**For Sale: ±340.24 AC
\$1,100,000**

For Additional information visit www.Land.com

For More Information Contact:



Mike Kuppenbender, ALC, CCIM, SIOR
DRE License #: 00811112
mkupp@tricommercial.com
916.960.5709



Olen Zirkle, ALC
DRE License #: 01190000
ozirkle@tricommercial.com
916.960.5703

TRI Outdoor Properties

532 Gibson Drive, Suite 200, Roseville, CA 95678
LAND BROKERAGE | Recreational · Agricultural · Conservation

A Division of TRI Commercial Real Estate Services, Inc.

The information in this document was obtained from sources we deem reliable; however, no warranty or representation, expressed or implied, is made as to the accuracy of the information contained herein.