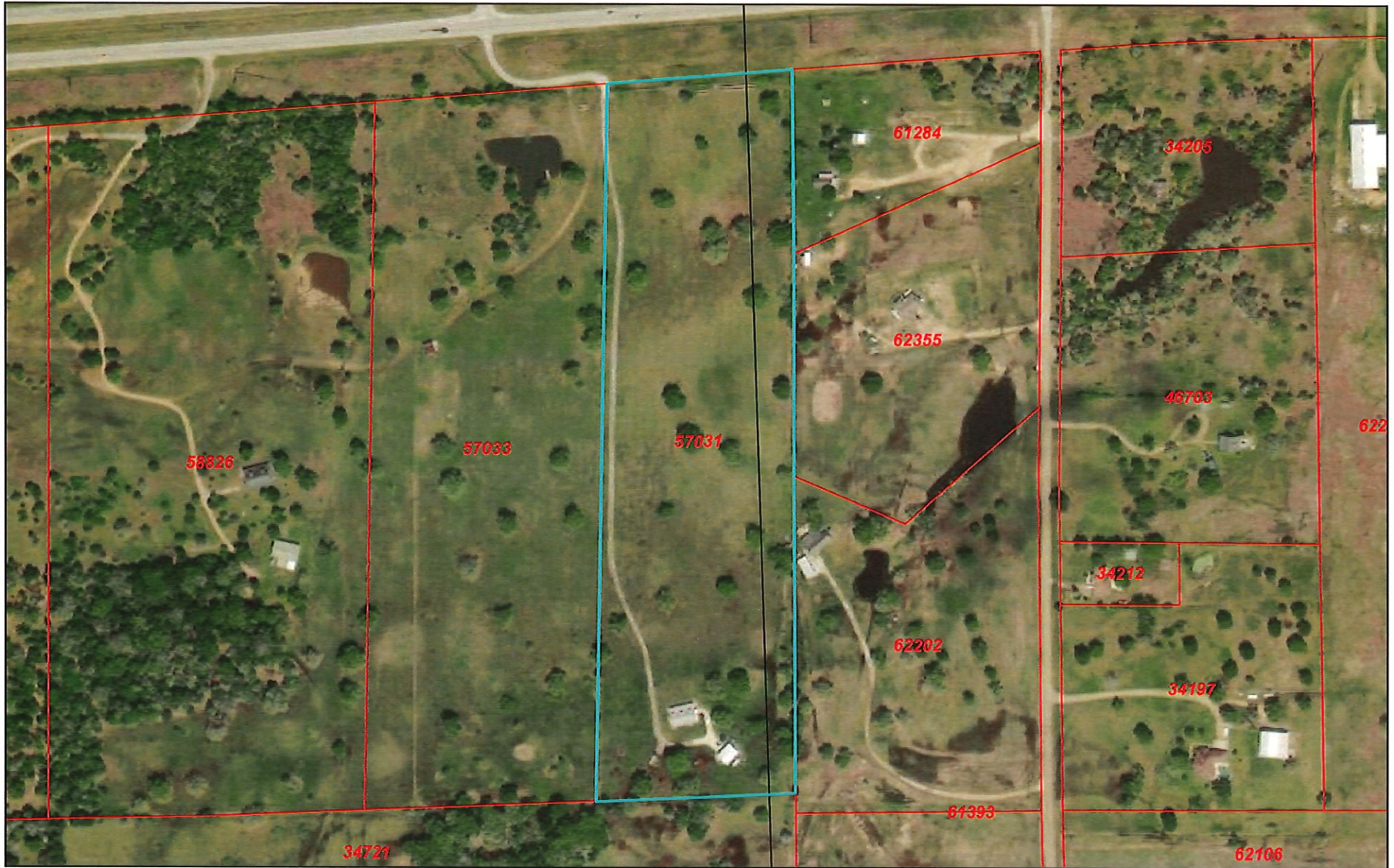
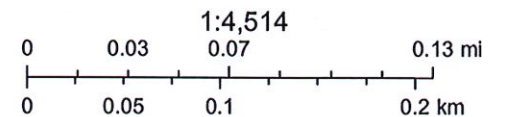


# Fayette CAD Web Map



6/1/2020, 1:25:31 PM

-  Parcels
-  Abstracts



Source: Esri, DigitalGlobe, GeoEye, Earthstar Geographics, CNES/Airbus DS, USDA, USGS, AeroGRID, IGN, and the GIS User Community

Fayette County Appraisal District, BIS Consulting - [www.bisconsulting.com](http://www.bisconsulting.com)

Disclaimer: This product is for informational purposes only and has not been prepared for or be suitable for legal, engineering, or surveying purposes. It does not represent an on-the-ground survey and represents only the approximate relative location of boundaries.