

The Toluca Farm

Toluca, Montana



For additional details, contact:



Tim Nesson
Broker

Member—Landmark of Billings
1925 Grand Avenue, Ste. 144,
Billings, MT 59102

Cell: (406) 860-0791
E-mail: tim@montanafarmranch.com



The Toluca Farm

Purchase Price: \$3,250,000.00



Location: Thirty miles East of Billings, Montana, on I-90 near Toluca Interchange in Big Horn County.

Access: Toluca Interchange to Highway 87. Farm is located approximately one mile west of the interchange.

Area Features: Toluca Farm is thirty minutes from Billings, Montana's largest city with all amenities.

Elevation: 3,250 feet.

Climate: Toluca Farm is in a temperate climate for Montana. Average rainfall is between 12-14 inches.



The Toluca Farm

Toluca, Montana



IMPROVEMENTS:

- Brick ranch-style home, built in 1980 with 3,300 sq. ft., 4 bedrooms, 2.5 baths, hot water heat propane boiler, central air, full basement, double attached heated garage, 6,500 gal. cistern.
- 35,000-bushel grain bin with aeration
- 75' x 120' Quonset—concrete floor, door openers, 220 power, radiant heat, forced air
- 56' x 60' insulated shop with office—cement floor, door opener, power
- 24' x 32' storage building
- Two 120-ton fertilizer/grain storage hopper bins, not part of purchase price





The Toluca Farm

Toluca, Montana

ACREAGE:

Total acres: 4,172 +/-

Tillable: 3,050 +/-

Grass: 1,122 +/-

WATER: Five reservoirs, cistern for house and shop

WILDLIFE: Mule deer, antelope, upland game birds

MINERALS: Sellers share, if any, to convey with property

TAXES: \$5,100.00—estimated

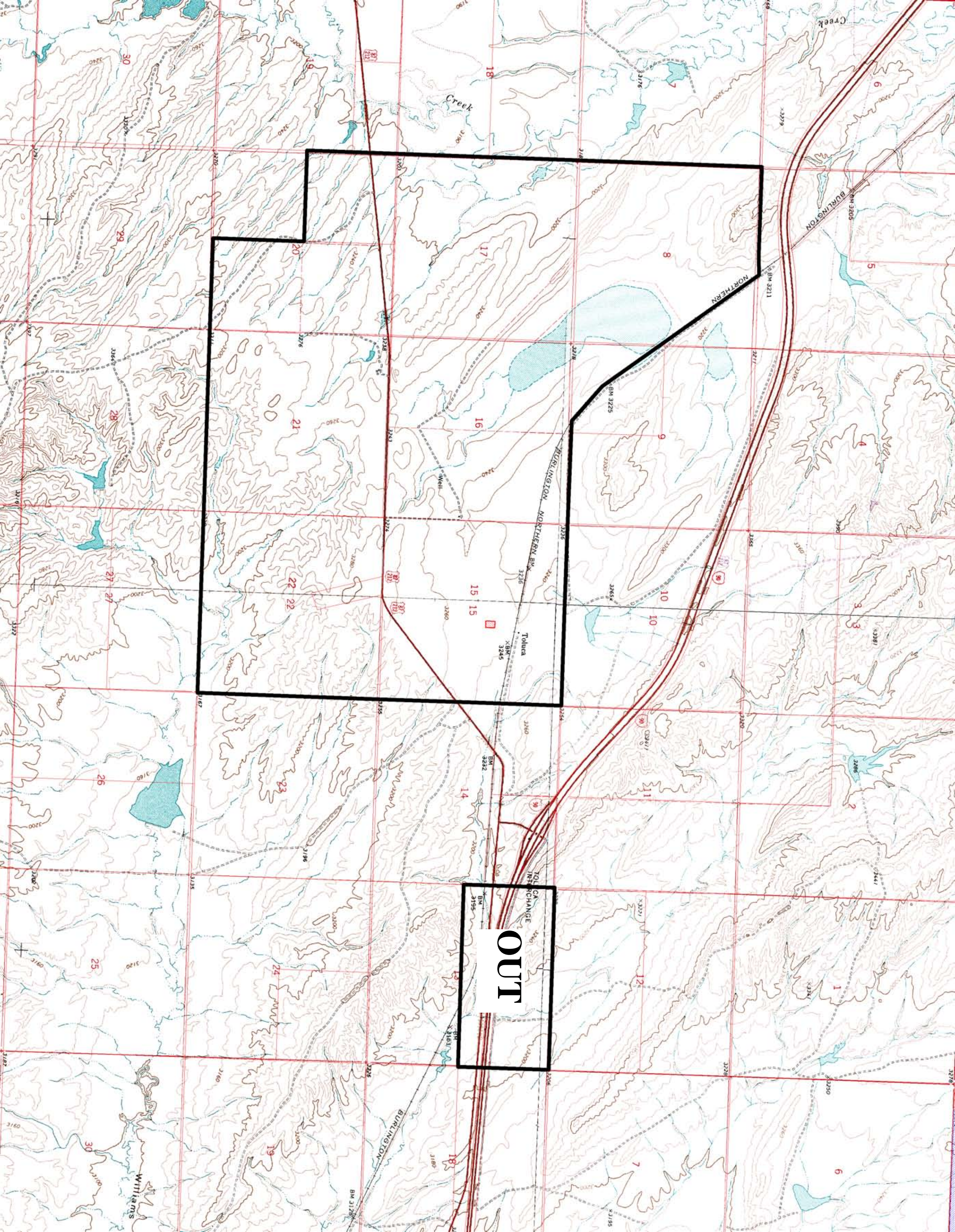
TERMS: Cash to seller

PRICE: \$3,250,000

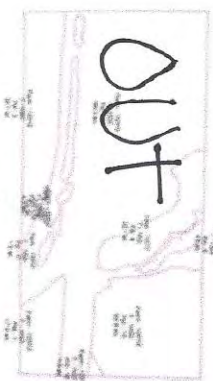
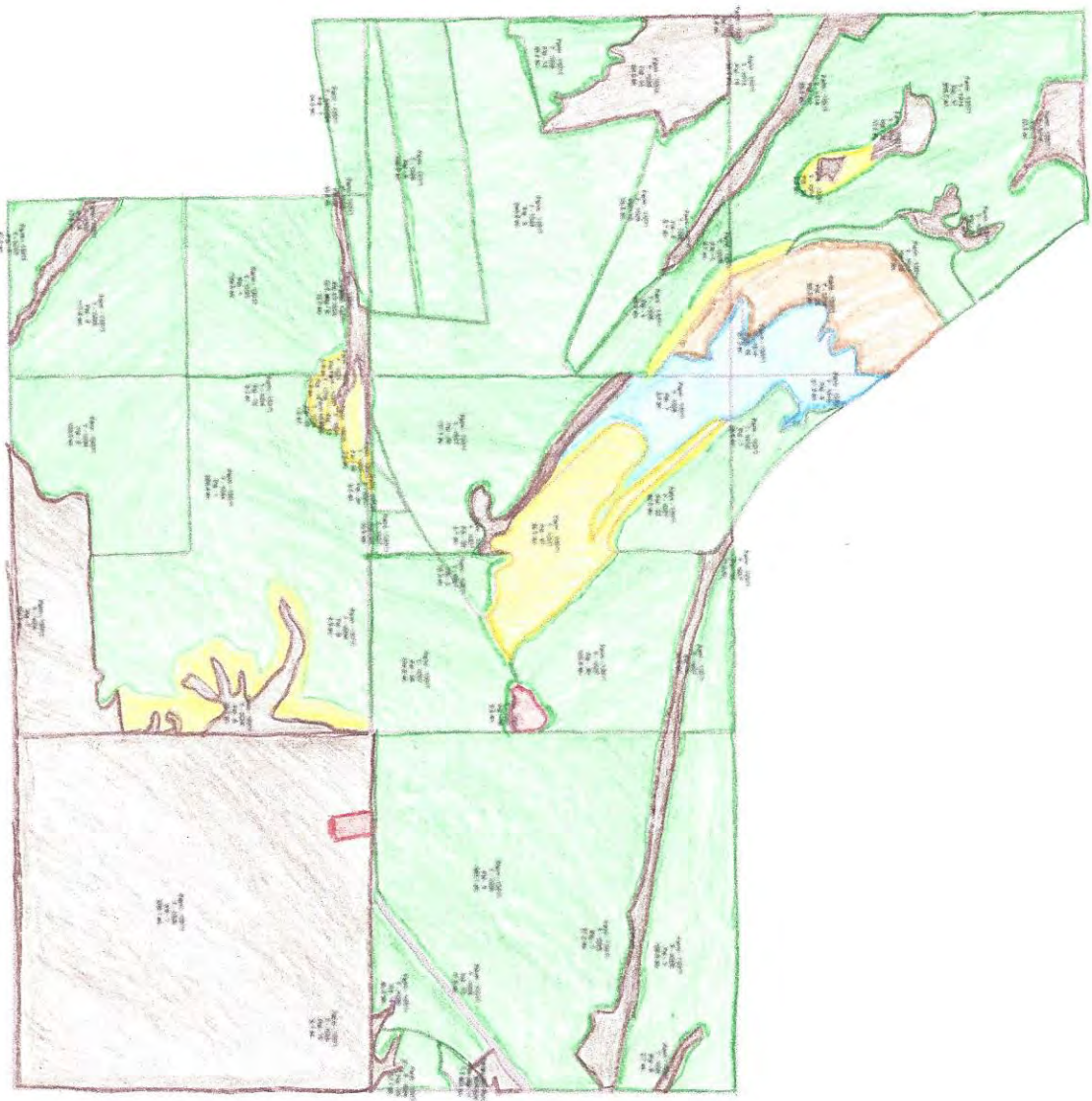
BROKER COMMENTS: Wheat farm and pasture close to Billings with a nice set of improvements. Broker has partial interest in property.



NOTICE: The information contained herein has been supplied by the owner to **LANDMARK REALTORS** and/or compiled by **LANDMARK REALTORS** from other sources believed to be reliable. All information contained herein is not guaranteed to be accurate, and the reader of this brochure should independently verify all such information, particularly the number of acres involved, the classifications of those acres, carrying capacity, estimates of production yields, water rights, etc.



OUT



-  Tilled/Cropland
 Grass
 Grass / Alfalfa
 Wetlands
 Farmstead
 Water

