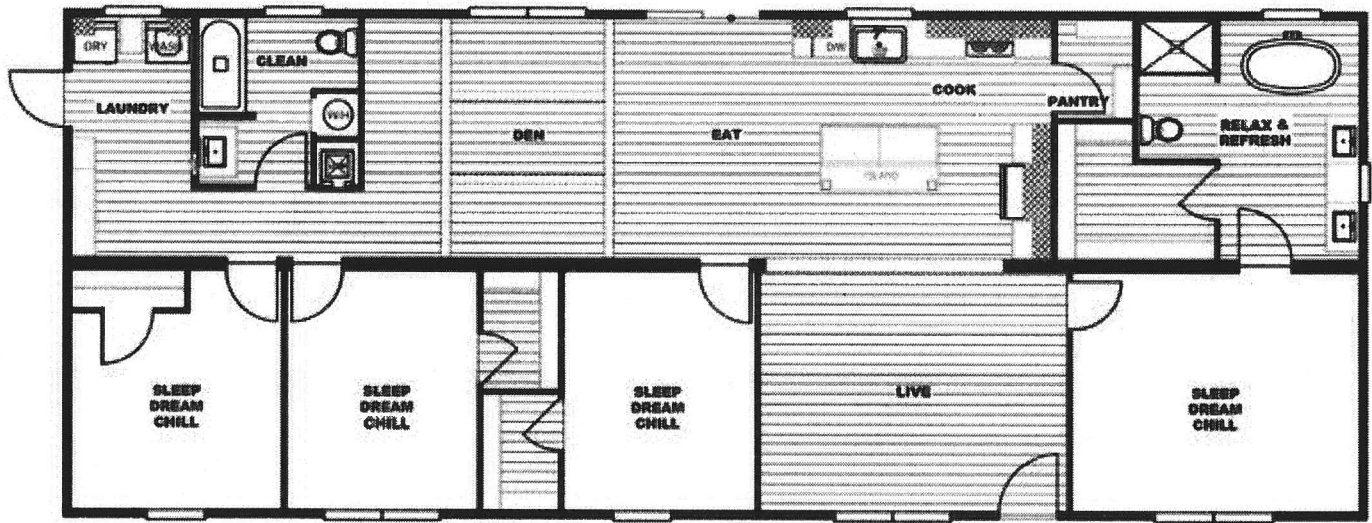


AMELIA

Home Plan 44NXT28684AH

4 Beds • 2 Baths • 1824 sq. ft. • 68' width • 28' depth

<https://www.claytonhomes.com/homes/44NXT28684AH>



Features

Family Room
Open Floor Plan

Kitchen Island
Double Sinks in Bath

Split Bedrooms
Separate Tub and Shower

Utility Room

The home series and floor plans shown all have starting prices within the price range indicated. Your local Home Center can quote you specific prices and terms of purchase for specific homes. Clayton invests in continuous product and process improvement. All home series, floor plans, specifications, dimensions, features, materials, availability, and starting prices shown are artist's renderings or estimates and are subject to change without notice or obligation. Dimensions are nominal and length and width measurements are from exterior wall to exterior wall. Starting prices include the home only, plus typical delivery and installation. Starting prices do not include other costs such as taxes, title fees, insurance premiums, filing or recording fees, land or improvements to the land, optional home features, optional delivery or installation services, wheels and axles, community or homeowner association fees, or any other items not shown on your Retailer Closing Agreement and related documents (your RCA). Your RCA will show the details of your purchase. 2020 Clayton Homes. All rights reserved.



PREVIEW NOT
AVAILABLE