



“Land of the Giants” 156.5 Surveyed Acre Missouri Hunting Property for Sale

T R O P H Y
PROPERTIES AND AUCTION
LAND | RECREATIONAL | RESIDENTIAL

www.TrophyPA.com • (855) 573-5263 • leads@trophyapa.com



PROPERTY ADDRESS:

00 Pike 443
Curryville, MO 63339

PRICE: \$626,000

ACRES: 156.5

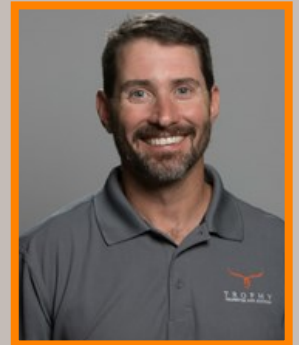
COUNTY: Pike

PROPERTY HIGHLIGHTS:

- 156.5 surveyed acres
- Three small ponds
- 47 acres tillable
- 60x30 covered storage barn
- Potential lake site
- Electric along property edge
- Two established food plots
- Unmatched age structure and deer quantity. managed for mature deer for 13 years

PROPERTY DESCRIPTION:

156.5 surveyed acres in Pike County, MO. Why do we call it “Land of Giants”? Because the Listing Broker has personally been involved in managing this property for mature bucks for the last 13 years. The trail cam pics, along with the bucks that have been harvested speak for themselves. I am not aware of another property for sale in this area that will provide better opportunities for harvesting Boone and Crockett bucks than this 156.5 surveyed acre property. There are 47 acres tillable on the property, plus two established food plots and a covered storage barn. There are three small ponds, and a potential lake site. There is also electricity available that runs along the edge of the property.



PRESENTED BY:

JASON CLEVELAND

Broker/Partner

M: (636) 751-4579

P: (855) 573-5263 x701

E: jcleveland@trophyapa.com

Trophy Properties and Auction

15480 Clayton Road

Suite 101

Ballwin, MO 63011

www.Trophyapa.com

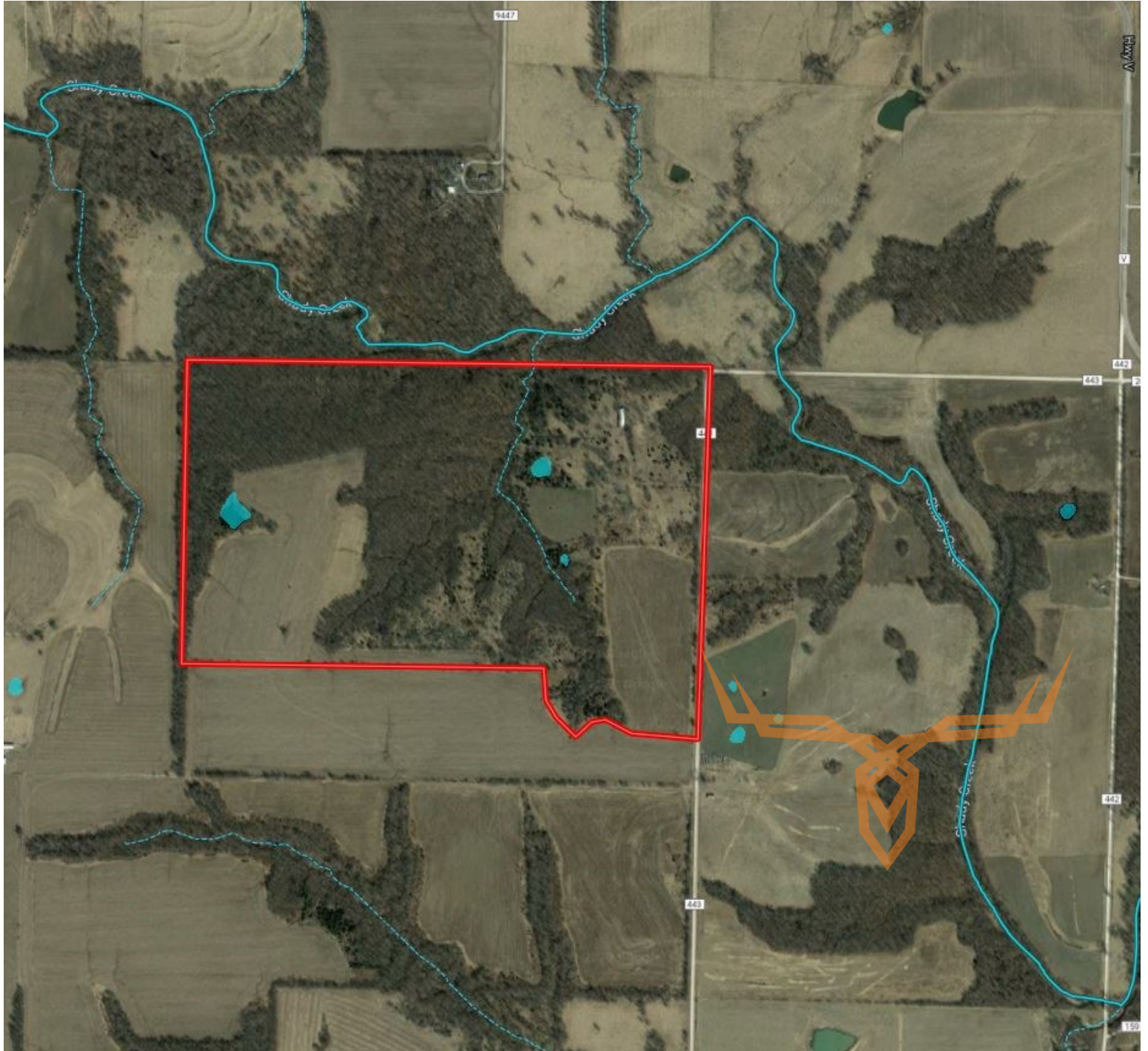
leads@trophyapa.com



“Land of the Giants” 156.5 Surveyed Acre Missouri Hunting Property for Sale

T R O P H Y
PROPERTIES AND AUCTION
LAND | RECREATIONAL | RESIDENTIAL

www.TrophyPA.com • (855) 573-5263 • leads@trophyPA.com



Broker does not guarantee the accuracy of sq. ft., lot size, or other information, buyer is advised to independently verify the accuracy of information through personal inspection and with appropriate professionals