



R&M Canyons +/-120.8 Acres



Located in central Edwards county Less than 15 minutes south of Rocksprings

Great access; only +/- 3 miles off hwy via **County maintained** road

Scenic, rolling hills to rolling steep canyons

Seasonal dry creeks lined with a variety of species of oak trees

carve out unique rock outcroppings

Water, electricity

+/- 750sqft cabin with a 184sqft porch overlooking the ranch offers 20-mile westward views

Additional 50amp RV Hookup

+/- 300sqft ATV storage and workshop 8 x 20 storage container

Miles and miles of improved ATV trails throughout property

Watering troughs 5 blind and feeder areas

Game includes whitetail, turkey, hogs, axis deer, aoudad and several other free ranging exotics

\$359,000 listing #156

Western Hill Country Realty

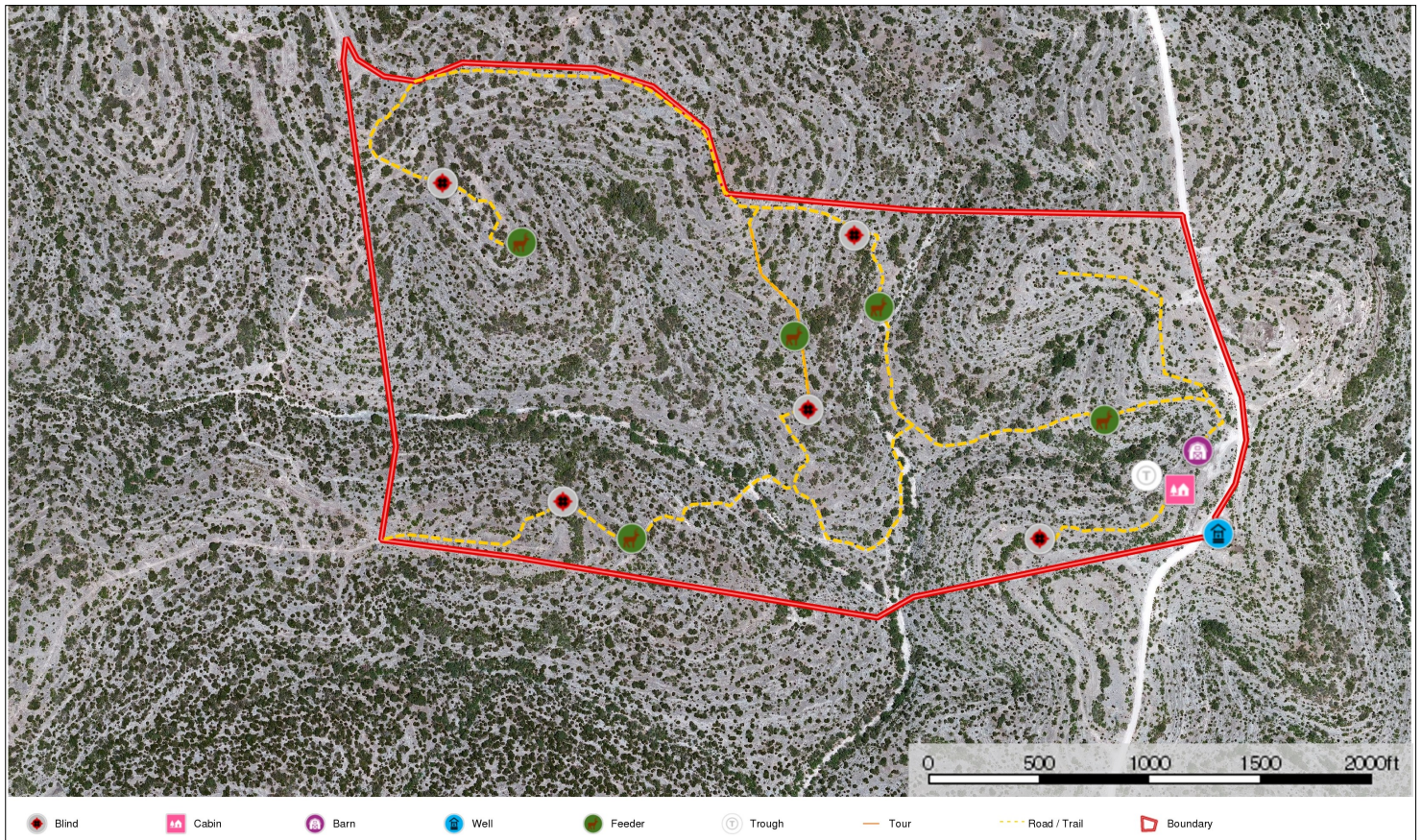
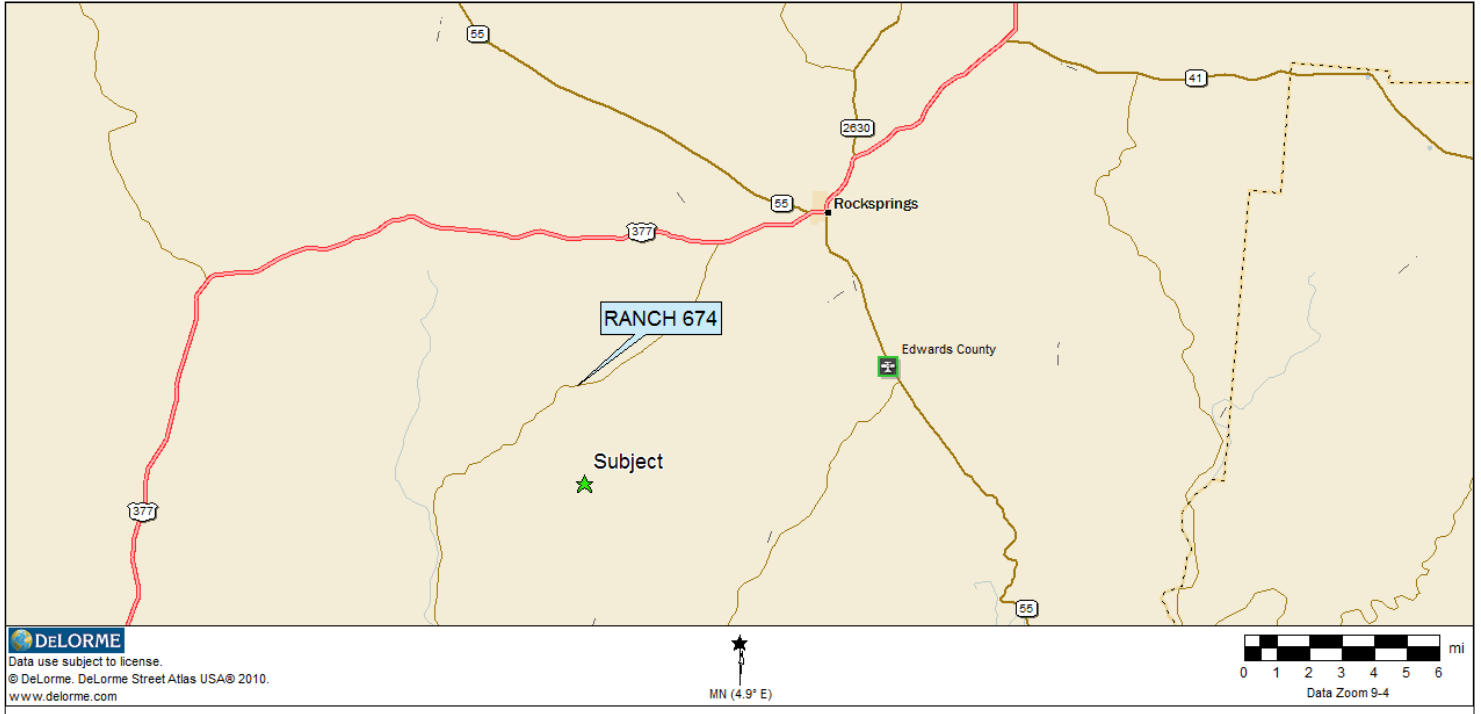
www.westernhillcountryrealty.com

info@westernhillcountryrealty.com

830-683-4435



R&M Canyons +/-120.8 Acres



Western Hill Country Realty

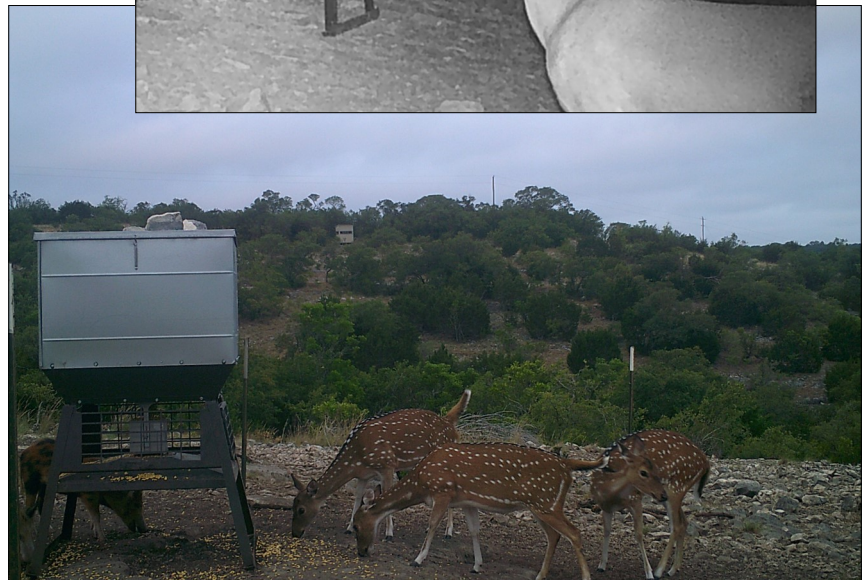
www.westernhillcountryrealty.com

info@westernhillcountryrealty.com

830-683-4435



R&M Canyons +/-120.8 Acres



Western Hill Country Realty

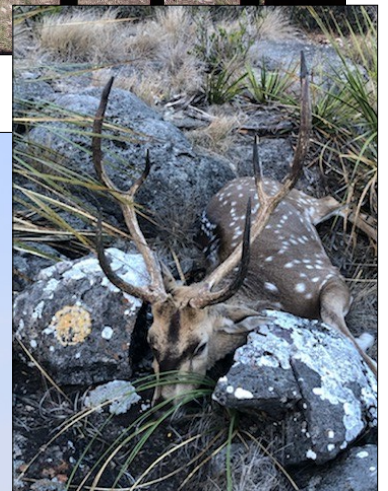
www.westernhillcountryrealty.com

info@westernhillcountryrealty.com

830-683-4435



R&M Canyons +/-120.8 Acres



Western Hill Country Realty

www.westernhillcountryrealty.com

info@westernhillcountryrealty.com

830-683-4435