

THE LAND GROUP

Hastings Farm

12080 Laurel Road, Mardela Springs, MD



Nick Campanaro

nick@thelandgroup.us

443-465-3520

Ben Alder

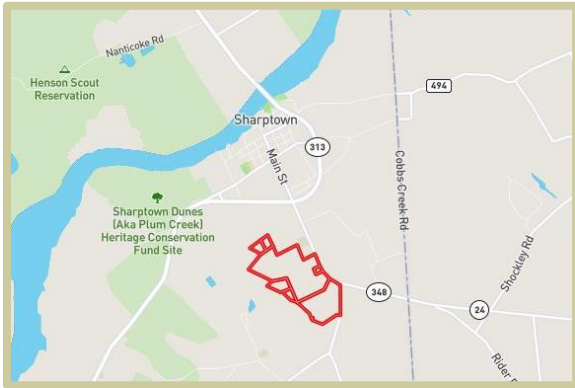
ben@thelandgroup.us

443-865-1344

150 West Market Street, Suite 102 | Salisbury, MD 21801 | www.thelandgroup.us

**We Sell
Dirt.**

THE LAND GROUP



12080 Laurel Road | Mardela Springs, MD.

PROPERTY OVERVIEW

TOTAL ACREAGE: 133.04
COUNTY: Wicomico
PRICE PER ACRE: N/A
SALE PRICE: \$1,600,000

Hastings Farm - Seven parcels totaling 133.04 acres including +/- 77 tillable acres (90% irrigated), 48 wooded acres, and 8 acres improved with poultry operation growing for Mountaire and single-family home. Irrigation is two center pivots that cover about 47 acres and sub-surface irrigation that covers the remaining tillable acreage. Two poultry houses (1) 60x500 built in 2007 and (1) 40x500 older house. Poultry operation includes manure shed. Property is also improved by 2,764 SF home on 1.34-acre lot with swimming pool. Many renovations to home. This farm has substantial income from irrigated cropland as well as poultry houses. Soils are suitable for specialty crops such as watermelon and sod.

Nick Campanaro
nick@thelandgroup.us
443-465-3520

Benjamin Alder
ben@thelandgroup.us
443-865-1344

THE LAND GROUP



THE LAND GROUP

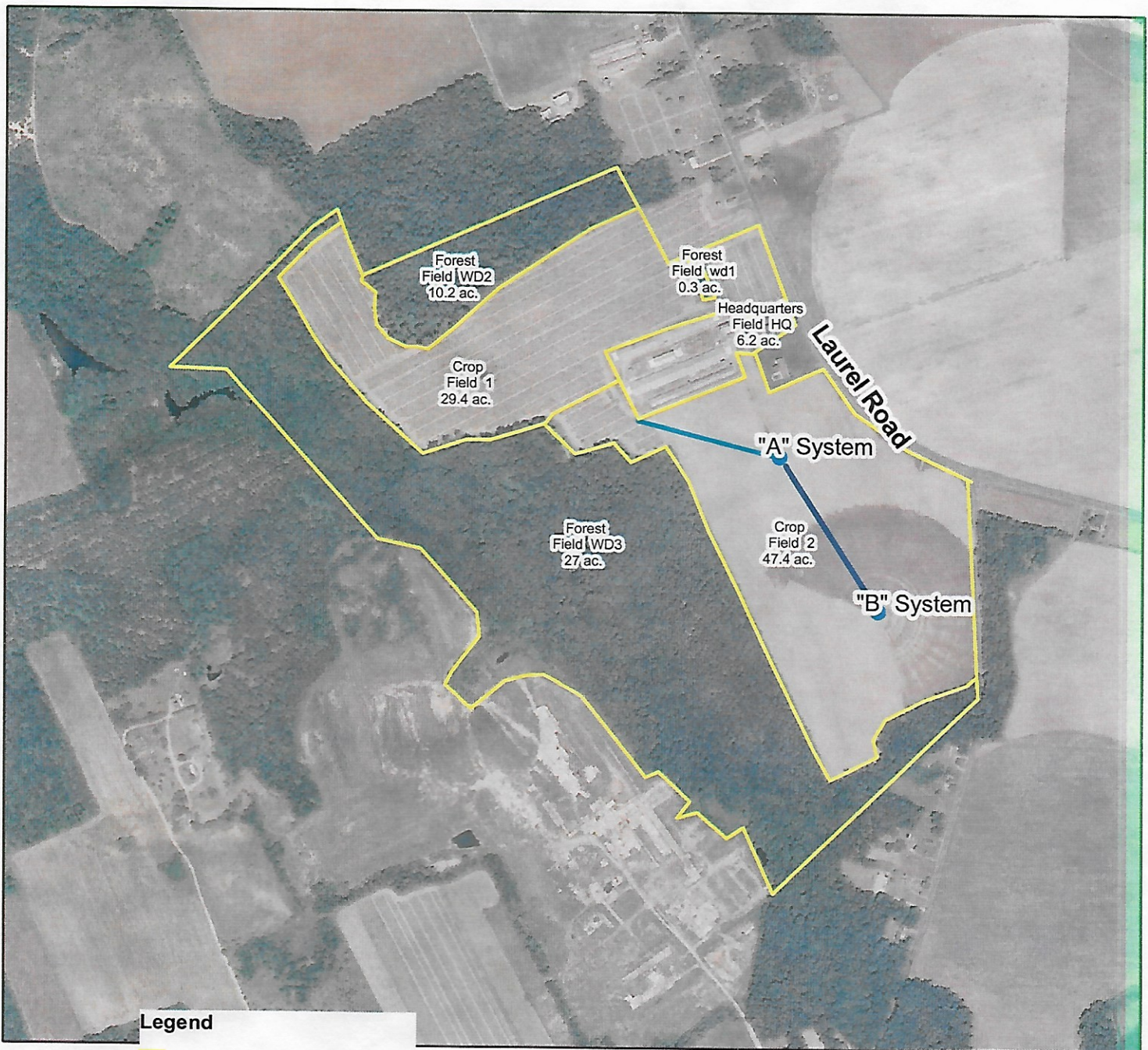


Conservation Plan Map

Date: 5/10/2013

Customer(s): ROBERT J HASTINGS
Legal Description:
Farm:1455
Tract:266

Field Office: WICOMICO COUNTY SERVICE CENTER
Agency: MDA / NRCS
Assisted By: BIANCA SOTO GOMEZ



Legend

- Hastings_266
- Nozzel Replacement
- New Center Pivot System

Practices (points)

CBWI 2012

- 442-New Center Pivot
- roads

