



Mailtrail Creek 202.04 Game Managed Acres



Located in southwestern Edwards county
Good access, less than 5 miles from blacktop
Live oak lined Mailtrail Creek cuts through the property
making a travel corridor for wildlife
Great road system provides access throughout the ranch
Water provided and electricity readily available
Level bottoms with abundant topsoil, heavy cover, HUGE live oaks
to sloping/ steep hills with level hilltops offering up 15 mile views
HUGE, low fenced neighbor to the south
The hunting in the area is excellent
Game in the area includes whitetail, turkey, hog, axis, aoudad
Located in a game management area
Wildlife exempt taxes \$465,000 listing #206

Western Hill Country Realty

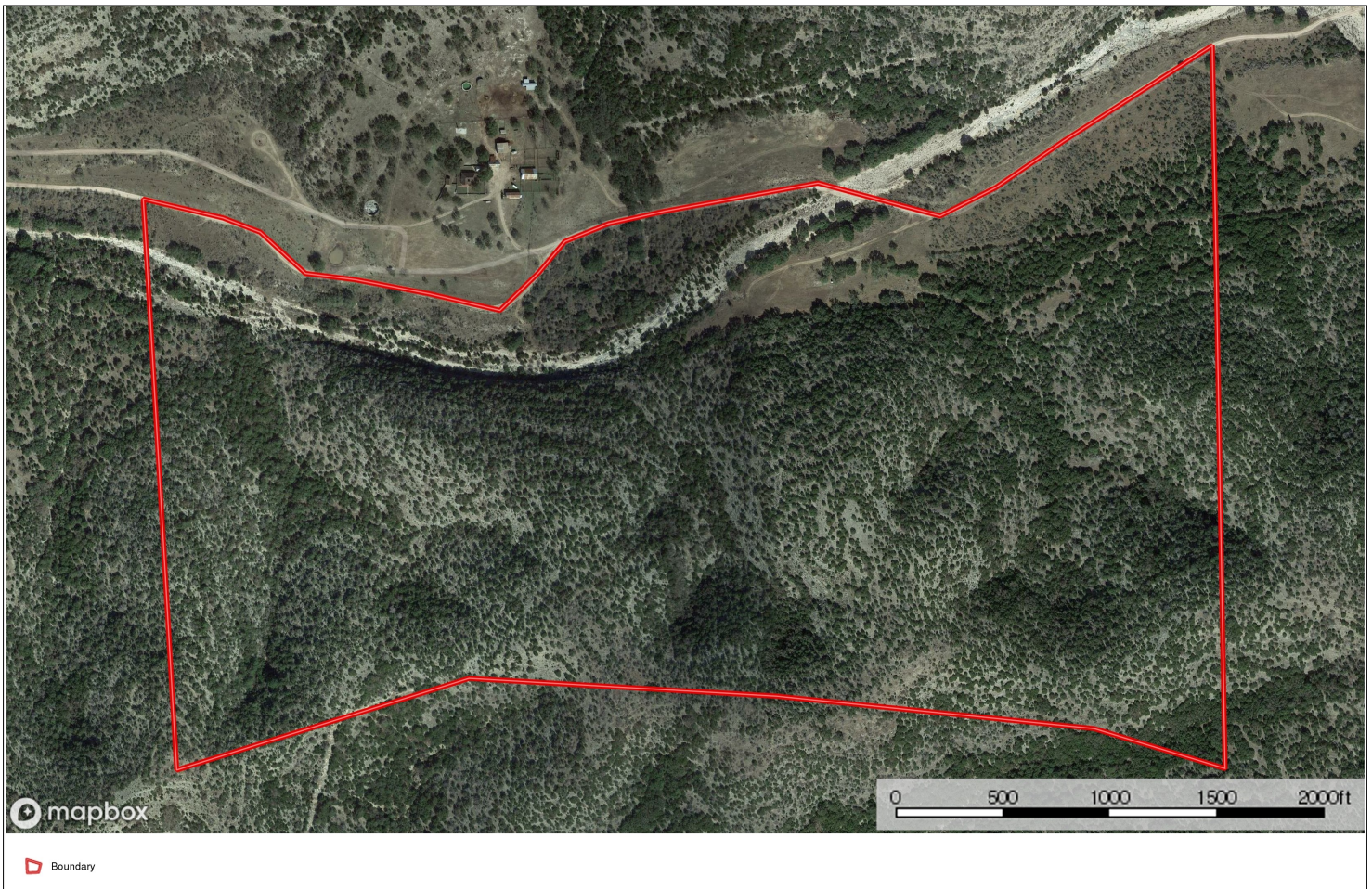
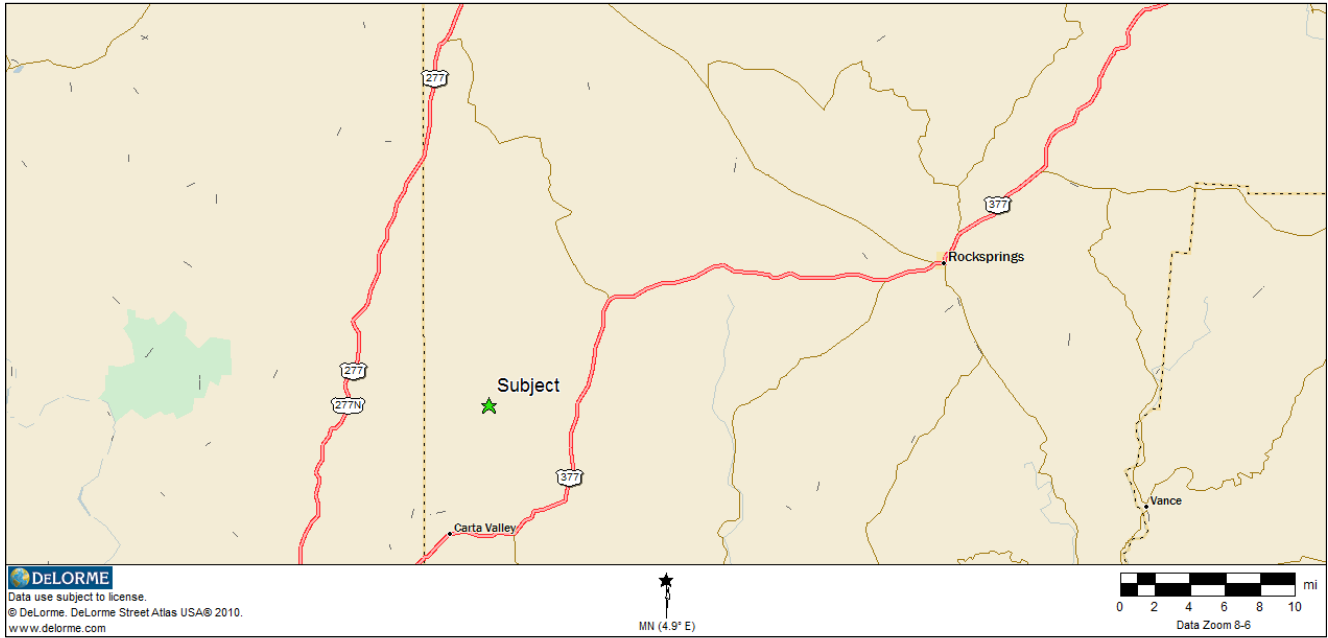
www.westernhillcountryrealty.com

info@westernhillcountryrealty.com

830-683-4435



Mailtrail Creek 202.04 Game Managed Acres



Western Hill Country Realty

www.westernhillcountryrealty.com

info@westernhillcountryrealty.com

830-683-4435



Mailtrail Creek 202.04 Game Managed Acres



Western Hill Country Realty

www.westernhillcountryrealty.com

info@westernhillcountryrealty.com

830-683-4435