

3.53 Acres
***“Commercial”* Tract**
Troy, MO



- 3.53 Acres
- Hwy 47W Road Frontage
- Adjacent to City of Troy
- Public Sewer and Water

Ideal for:
Commercial
Retail
Multi-Family



High Visibility
Hwy 47 Road Frontage

Asking Price:
\$389,000.00

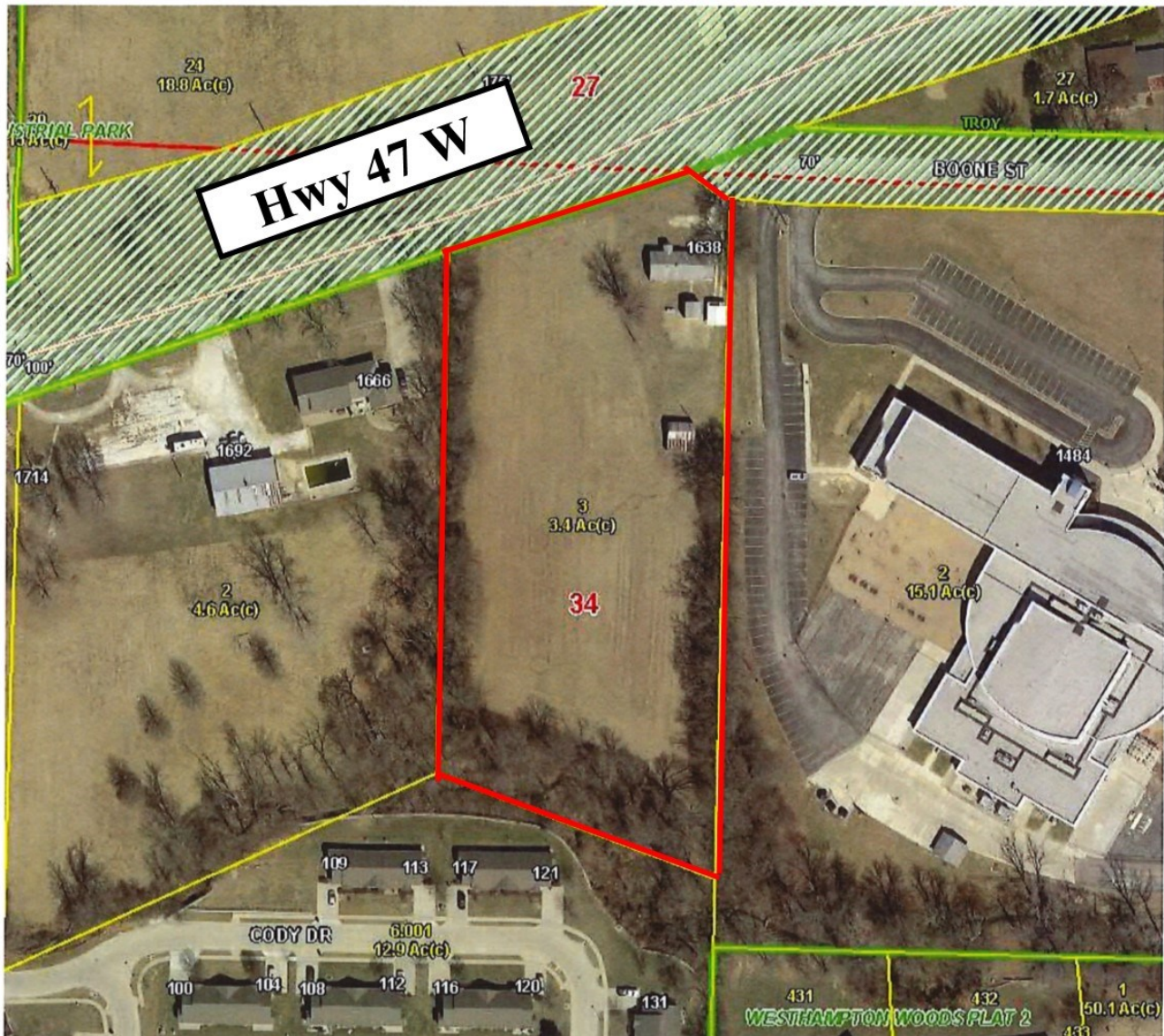


tom@tarealeste.com

TA Tom Anderson
• REAL ESTATE •

www.tarealestate.com 636.366.4880
146 West 2nd Street, Moscow Mills, MO 63362

3.53 Acres
“Commercial” Tract
Troy, MO



For Information or Showing Contact Tom Anderson at 636-262-4447

This offering is subject to error, omission, prior sale, change of price, or withdrawal without notice.

Information contained in the presentation is deemed reliable but not warranted.