

REFERENCES:
DEED RECORD: D.B. 274, p. 169

PLAT RECORD: P.B. 9, p. 612

TAX RECORD: TAX MAP 22, A PORTION OF PARCEL 52
THE FIELD DATA UPON WHICH THIS PLAT IS BASED HAS
A CLOSURE PRECISION OF ONE FOOT IN 34,502 FEET,
AND AN ANGULAR ERROR OF 3" PER ANGLE POINT, AND
WAS ADJUSTED USING THE LEAST SQUARES METHOD.
THIS PLAT HAS BEEN CALCULATED FOR CLOSURE AND
IS FOUND TO BE ACCURATE WITHIN ONE FOOT IN
1,307,770 FEET.

FIELD DATA WAS COLLECTED USING NIKON
DTM-730 ELECTRONIC TOTAL STATION.

FIELD SURVEY COMPLETED THE WEEK
MAY 15, 2000.

THE PROPERTY SHOWN HEREON IS NOT
LOCATED WITHIN THE 100-YEAR FLOOD HAZARD
AREA SHOWN BY THE FEDERAL EMERGENCY
MANAGEMENT AGENCY MAP, FIRM NO. 150519 0150 A
FOR JASPER COUNTY, GEORGIA.

THE PROPERTY SHOWN HEREON IS LOCATED
IN AN AGRICULTURAL (AG) ZONING DISTRICT
AS INDICATED BY THE JASPER COUNTY
ZONING ORDINANCE MAP.

LEGEND

- 1" IRON PIPE FOUND
- 3/8" SOLID ROD (REBAR) FOUND
- 3/8" SOLID ROD (REBAR) SET
- ⊗ BEARING CHANGE (NO PIN SET)
- ADJOINING PROPERTY LINE
- OVERHEAD POWER
- ⌒ POWER POLE
- P.O.B. POINT OF BEGINNING
- D.B. DEED BOOK
- P.B. PLAT BOOK
- L.L. LAND LOT

EUGENE W. KELLY
P.B. 9, p. 612

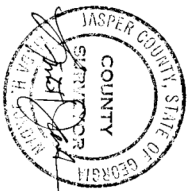
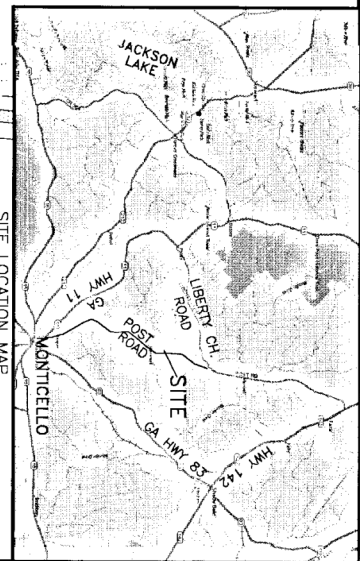
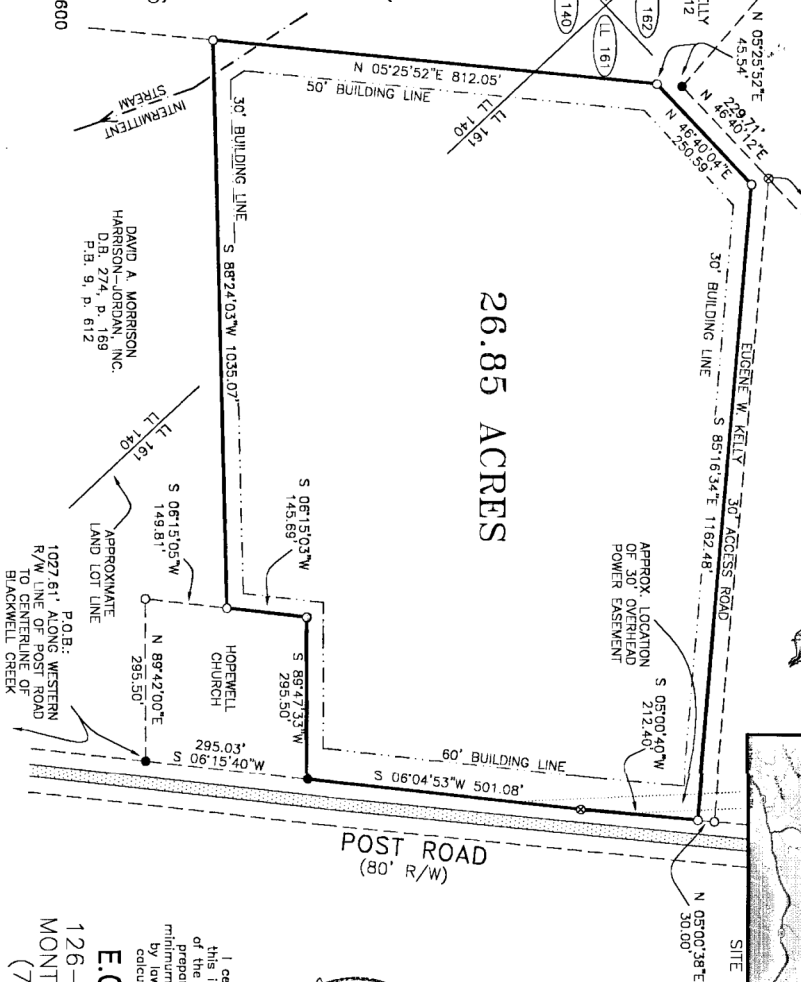
Boundary Survey for:
JEFF COLGLAZIER
Land Lots 140 and 161, District 16
Georgia Militia District 291
Jasper County, Georgia

200 0 200 400 600
SCALE 1" = 200'
MAY 17, 2000

CLERK OF SUPERIOR COURT,
JASPER COUNTY, GEORGIA
FILED AND RECORDED
ON June 5, 2000 - 9:03 AM IN
PLAT BOOK 9 PAGE 638
DAN JORDAN, CLERK

JOSEPH H. MCLENDON
P.B. 8, p. 123

DAVID A. MORRISON
HARRISON-JORDAN, INC.
D.B. 274, p. 169
P.B. 9, p. 612



I certify, that in my opinion,
this is a correct representation
of the land plotted and has been
prepared in conformity with the
minimum standards and requirements
by law. All bearings shown are
calculated from angles turned.

E.O. JORDAN, INC.
126-A N. WARREN ST.
MONTICELLO, GA 31064
(706) 468-8832