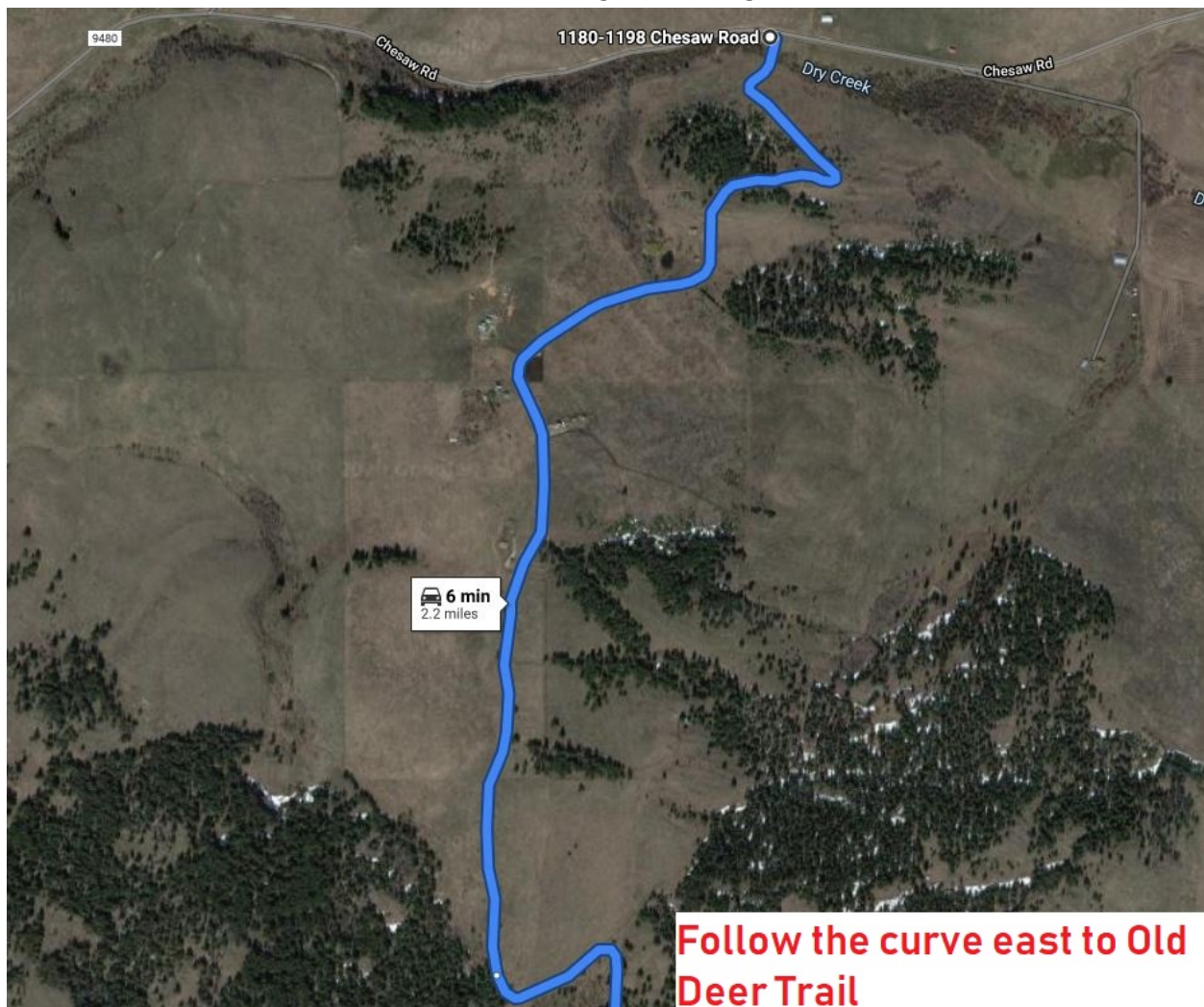


40 Acres – Old Deer Trail, WA Mapped Directions:

4WD Recommended. Just 2.2 miles (6 minutes) from Chesaw Rd. From Chesaw Road, go south on Old Burnham Rd. for about 1.6 miles. Follow it as it curves to the left and turns into Old Deer Trail and then as it curves right (south) again for about 0.75 miles until you get to your property's NW corner. You will pass through a few unlocked gates along the way. When you hit the end of Old Deer Trail and see the small home with solar panels, keep following the dirt road east, up and over the hill. When you see the "groovy" camper you will know you're there.

*** Physical & Legal Access via existing roads as described in directions ***

From Chesaw Road, go south on Old Burnham Rd. for about 1.6 miles. Follow it as it curves to the left and turns into Old Deer Trail and then as it curves right (south) again for about 0.75 miles.



There are a few unlocked gates to get to the property. Access is legal – there is a local farmer who maintains and keeps the area looking nice and he put up the gates. 😊

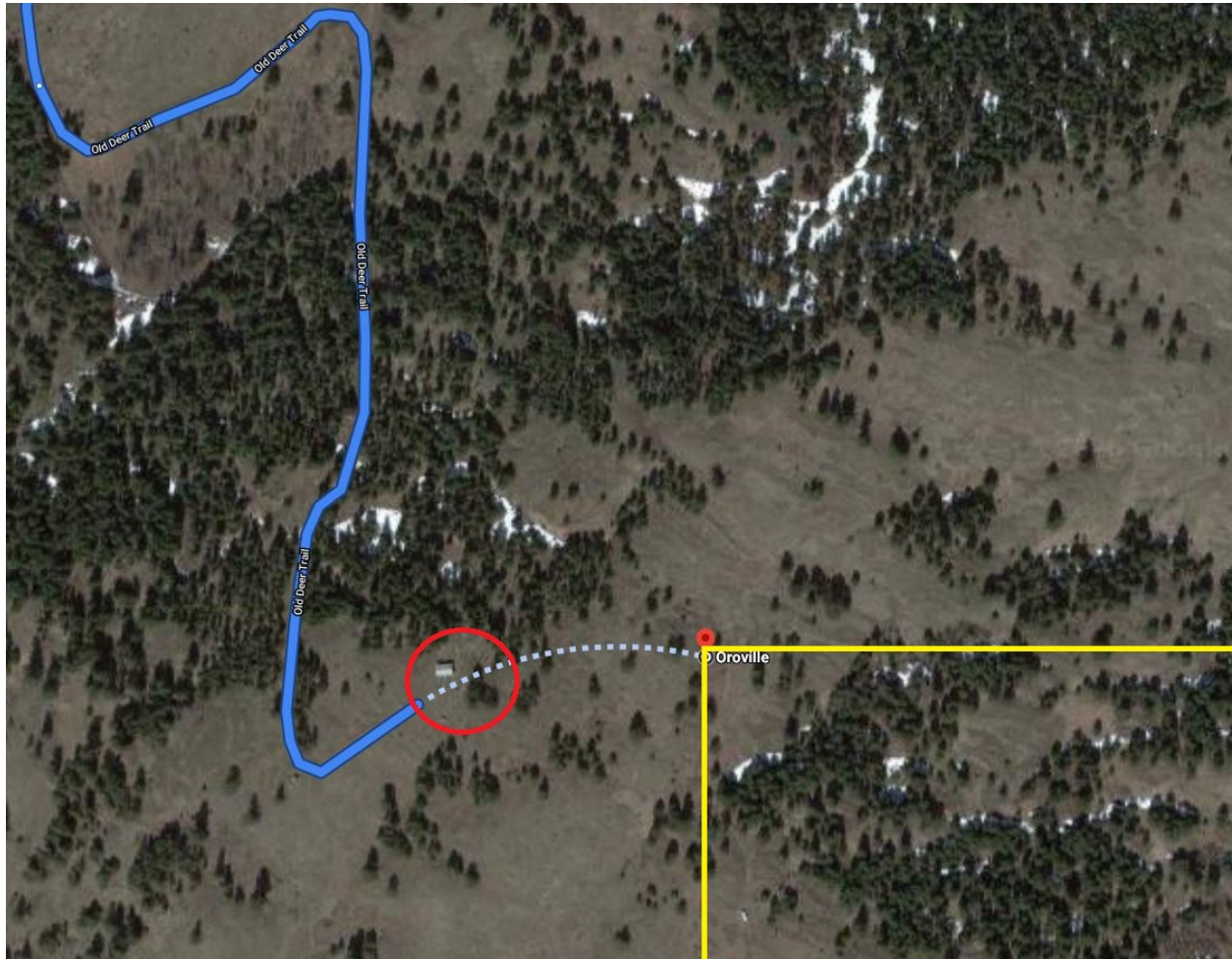
First gate looks like this:



Second gate looks like this:



Follow Old Deer Trail down about 0.75 miles and then as it curves again east towards a small home or shed with solar panels around. Keep going on the two-track road past this and go up the hill towards the NW corner of your property. Once you make it up the hill you will see the “groovy” camper and know your’re in the right place.



Be sure to plug these GPS coordinates into your smart phone’s navigation app like Polaris or On X Maps so that you can walk to each of the corners of your property. It is gorgeous!

GPS Coordinates:

NW: 48.8930291096605,-119.198564500627

SW: 48.8893781456572,-119.198619120924

SE: 48.8893961028515,-119.193019470444

NE: 48.8930568495709,-119.1929827114