



# K&K Silverhorn 216 Acres



Located in southern Edwards county  
14 miles west of Barksdale and 22 miles south of Rocksprings  
Access via County Road and less than 1 mile of short easement road  
Electricity and water in place  
Completely low fenced  
Large neighbors to the west and south  
Campsite sits on one of the higher points around offering dynamic hilltop views  
Main house is +/- 1344sqft; 1/1 with open floor plan, large kitchen and dining with wood burning stove.  
Abundant windows and wrap around porches to see the stunning views  
Bunkhouse has a full bathroom, large walk in closet, washer and dryer  
8x40ft sea container for storage  
8x20ft sea container that contains a "like new" walk-in cooler  
Rolling to sloping terrain, nothing too steep  
Heavy native tree cover providing great habitat for wildlife (abundant live oak and pinion pines)  
4 quality hunting blinds    5 corn feeders    4 hay feeders  
4 300lb protein feeders    1 2500lb protein feeder    1 1000lb protein feeder  
Several large water storage tanks, piping to 2 watering troughs for the wildlife  
The plentiful wildlife includes whitetail, turkey, hogs, axis, elk, fallow, sika and aoudad  
The free ranging zebra herd will pay the occasional visit.  
Wildlife exempt taxes  
\$499,000    Listing #207

## Western Hill Country Realty

[www.westernhillcountryrealty.com](http://www.westernhillcountryrealty.com)

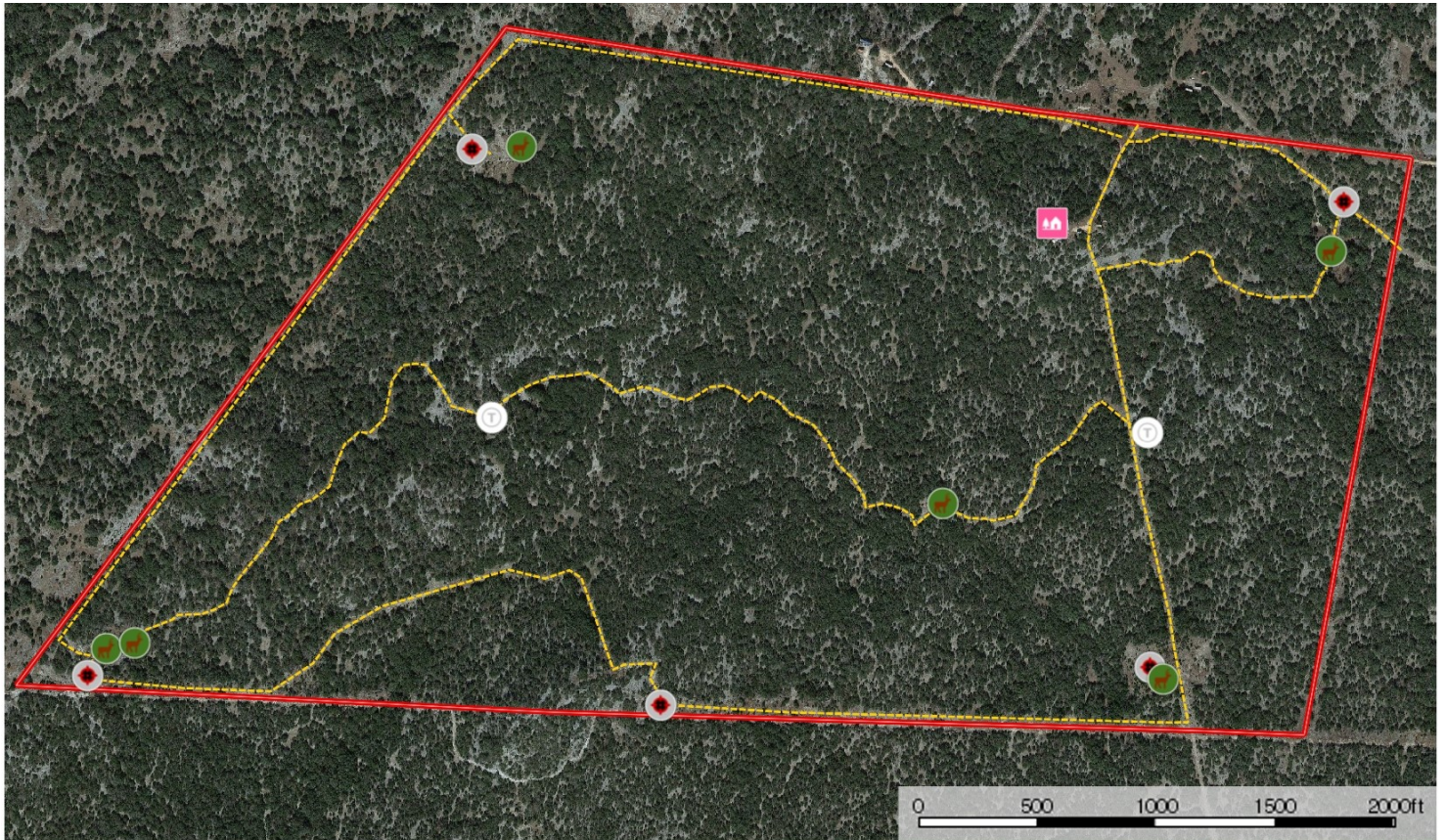
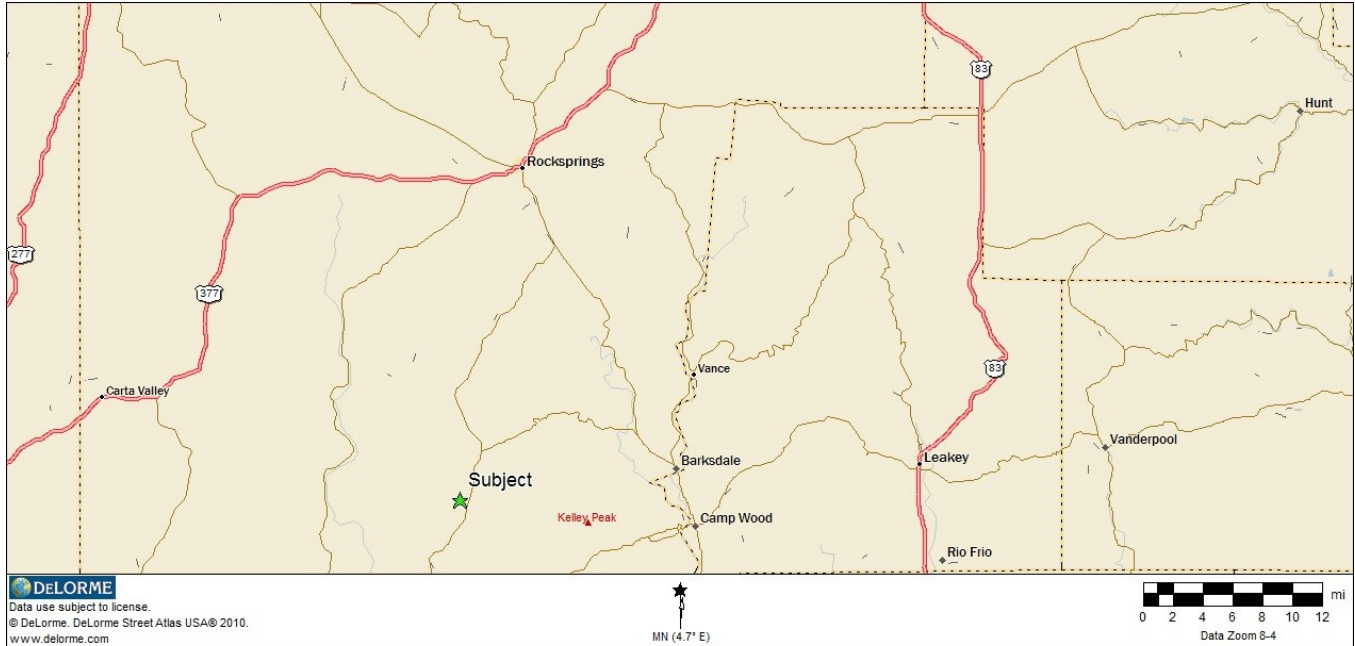
[info@westernhillcountryrealty.com](mailto:info@westernhillcountryrealty.com)

830-683-4435





# K&K Silverhorn 216 Acres



Cabin Feeder Blind Trough Road / Trail Boundary

## Western Hill Country Realty

[www.westernhillcountryrealty.com](http://www.westernhillcountryrealty.com)

[info@westernhillcountryrealty.com](mailto:info@westernhillcountryrealty.com)

830-683-4435





# K&K Silverhorn 216 Acres



**Western Hill Country Realty**

[www.westernhillcountryrealty.com](http://www.westernhillcountryrealty.com)

[info@westernhillcountryrealty.com](mailto:info@westernhillcountryrealty.com)

830-683-4435