



Protecting Clients. Conserving the Land.

North Porter Ranch

620± Acres

Pecos & Terrell Counties, Texas



James King, Agent

Office 432-426-2024

Cell 432-386-2821

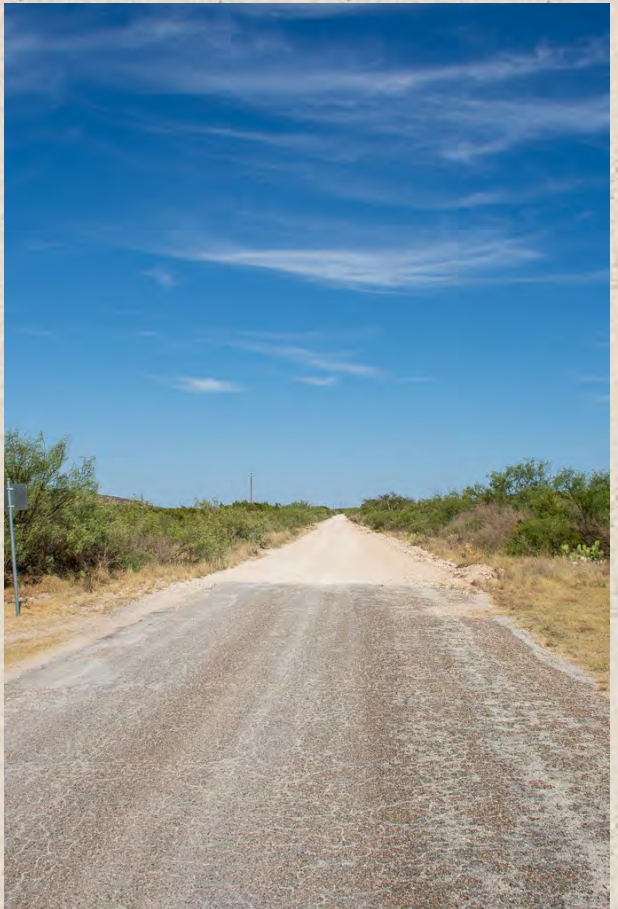
James@KingLandWater.com

Location

North Porter Ranch is located along the north side of Grey Ranch Road where the pavement ends and the improved caliche road begins halfway between Fort Stockton and Sanderson along the county line of Pecos and Terrell Counties

Acreage

620± Acres in Pecos and Terrell Counties



Protecting Clients. Conserving the Land.

Description

This is part of the Porter Ranch, a well know ranching family with deep roots in this part of West Texas and is owned by its oldest living family member. These 620 acres has it all with electricity, submersible well, water storage and great frontage on Grey Ranch Road. This ranch lies in the Independence Creek upper watershed and is a series of limestone hills and broad valleys. Wide tops with big valleys create a combination of easily accessible gentle land with deeper soil and the limestone

bluffs, steep hills, and canyon heads making this the perfect mixed use ranch. This is a working cattle, sheep, and goat ranch with great hunting. It has been managed well by the same family for decades and is known for its combination of native grass, shrubs, and trees.



Protecting Clients. Conserving the Land.

Habitat and Wildlife

Tamaulipan Brushland, Hill Country and Chihuahuan Desert habitats are all part of North Porter Ranch. From yucca and sotol, to hackberry and mesquite woodlands, to persimmon and juniper, the ranch represents a crossroads of diverse habitats. The property's browse and grasslands are in great condition, a result of responsible grazing methods. Native grasses, forbs, browse, brush, cacti and trees not only provide excellent habitat for game species such as Elk, deer, turkey, quail, and dove, but also for non-game species such as Texas horned lizard, neotropical songbirds, fox, ringtail cat, and many other mammals.



Mule deer, and whitetail deer populations on the Ranch are tremendous. The population is about 50/50 for the two deer types and, within the steep

terrain along the canyons, one can also find Elk and Aoudad sheep. Wing shooting for Blue Quail and Mourning Dove are tremendous.



Protecting Clients. Conserving the Land.



Water

There is one submersible well with storage and trough. Given the location of the well in a gap at elevation, water distribution with additional pipelines and trough would be easy to accomplish. The groundwater under North Porter Ranch is shallow, accessible, prolific, and high quality, being part of the Edwards-Trinity or Plateau Aquifer.



Protecting Clients. Conserving the Land.

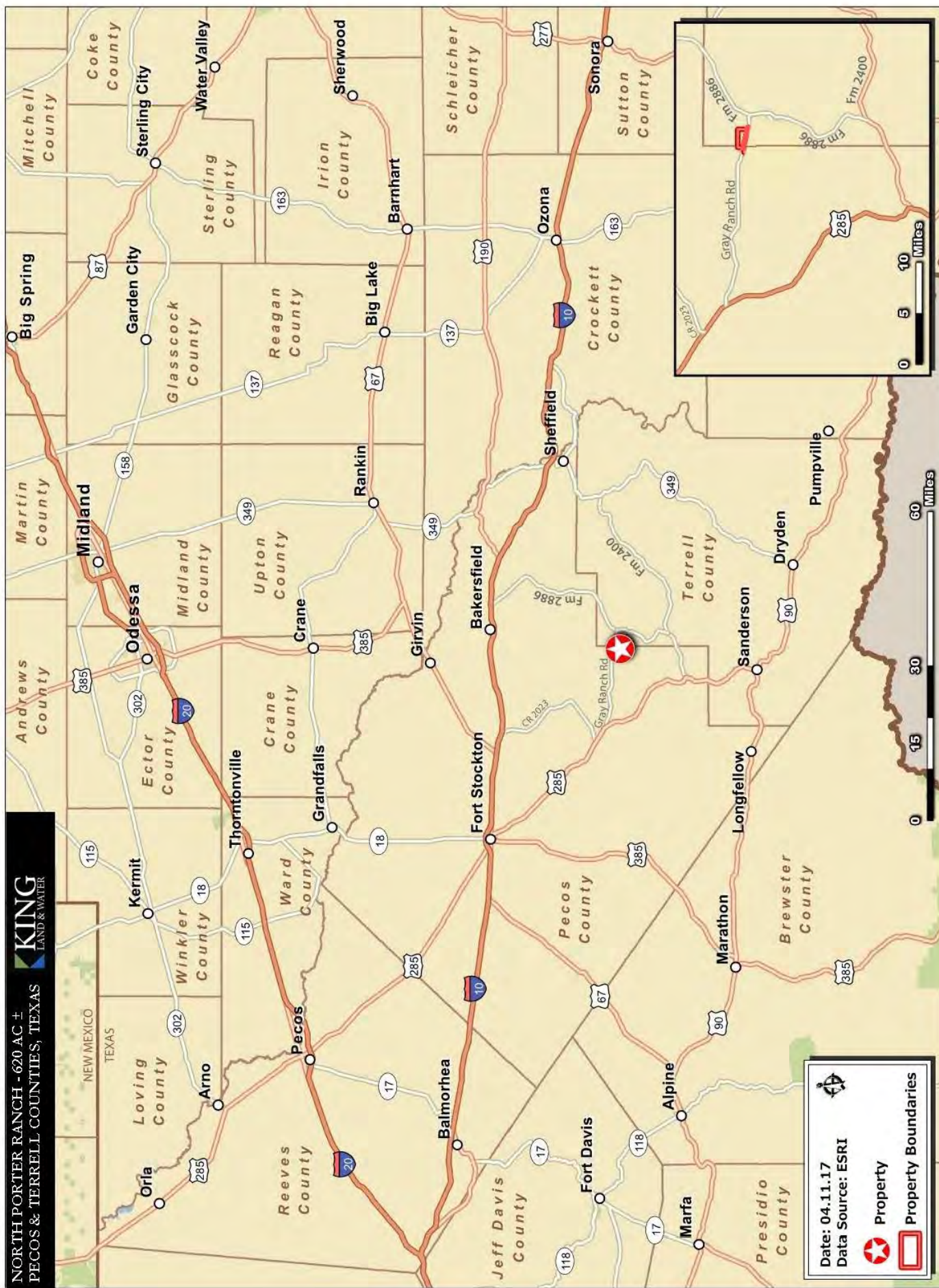


Protecting Clients. Conserving the Land.

Minerals

There is no production or any well sites on the ranch.
Minerals are not available.



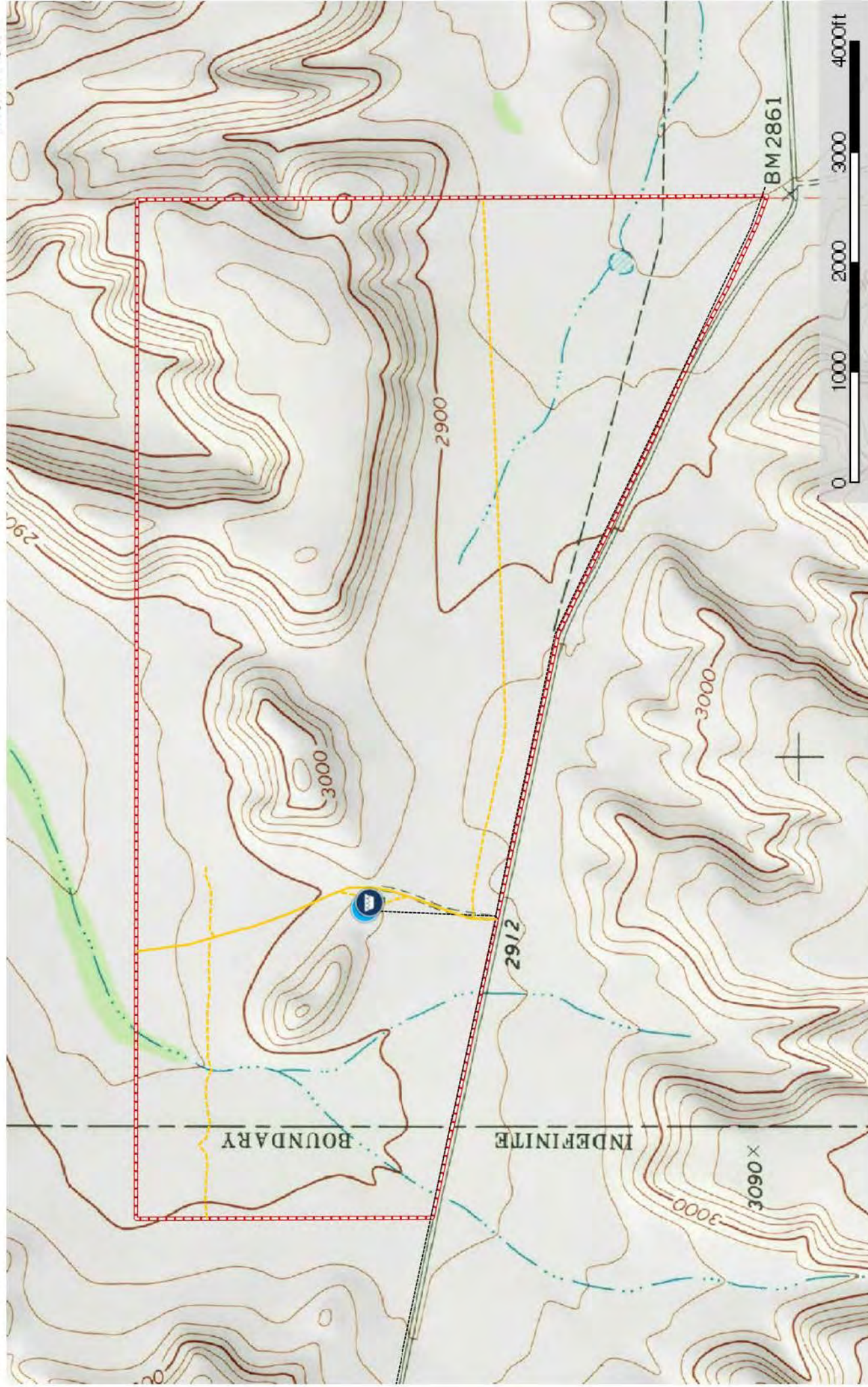


Date: 04.11.17
Data Source: ESRI

Property

Property Boundaries







Price

\$950/acre or \$589,000

Contact

James King, Agent
King Land & Water, LLC
432 426.2024 Office
432 386.2821 Cell
James@KingLandWater.com



Protecting Clients. Conserving the Land.