

For Sale

Land

63.42 Acres

Clearview Dr., +/-63 Acs

Clearview Dr.

Hopkins, South Carolina 29061

Property Highlights

- ±63.42 acres located on Clearview Drive
- 1692' of Paved Clearview Drive road frontage
- Less than 15 minutes from Southeast Columbia
- Large undeveloped tract - multiple homesites to choose from
- City of Columbia water along Clearview Drive
- Elevations up to 430'
- Beautiful sunrise views from the top with minimal clearing
- Several cleared areas for homesites or wildlife openings
- Established road system
- Deer and small game
- Sale price for ±63 acres: \$285,073 (\$4,495 per acre)
- Owner will consider subdividing - price to be negotiated

OFFERING SUMMARY

Sale Price	\$285,073
Lot Size	63.42 Acres

DEMOGRAPHICS

Stats	Population	Avg. HH Income	Total Households
1 Mile	584	\$68,064	203
5 Miles	20,426	\$63,251	7,307
10 Miles	122,918	\$73,850	43,679

For more information

Tombo Milliken

O: 803 744 9852 | C: 803 206 8384
tombo.milliken@naicolumbia.com

Tom Milliken

O: 803 744 9837 | C: 803 331 6999
tmilliken@naicolumbia.com

Nelson Weston

O: 803 744 9804 | C: 803 678 7346
nweston@naicolumbia.com



We obtained the information above from sources we believe to be reliable. However, we have not verified its accuracy and make no guarantee, warranty or representation about it. It is submitted subject to the possibility of errors, omissions, change of price, rental or other conditions, prior sale, lease or financing, or withdrawal without notice. We include projections, opinions, assumptions or estimates for example only, and they may not represent current or future performance of the property. You and your tax and legal advisors should conduct your own investigation of the property and transaction.

807 Gervais Street, Suite 200
Columbia, SC 29201
803 254 0100 tel
naicolumbia.com

For Sale

Land

63.42 Acres



NAIColumbia

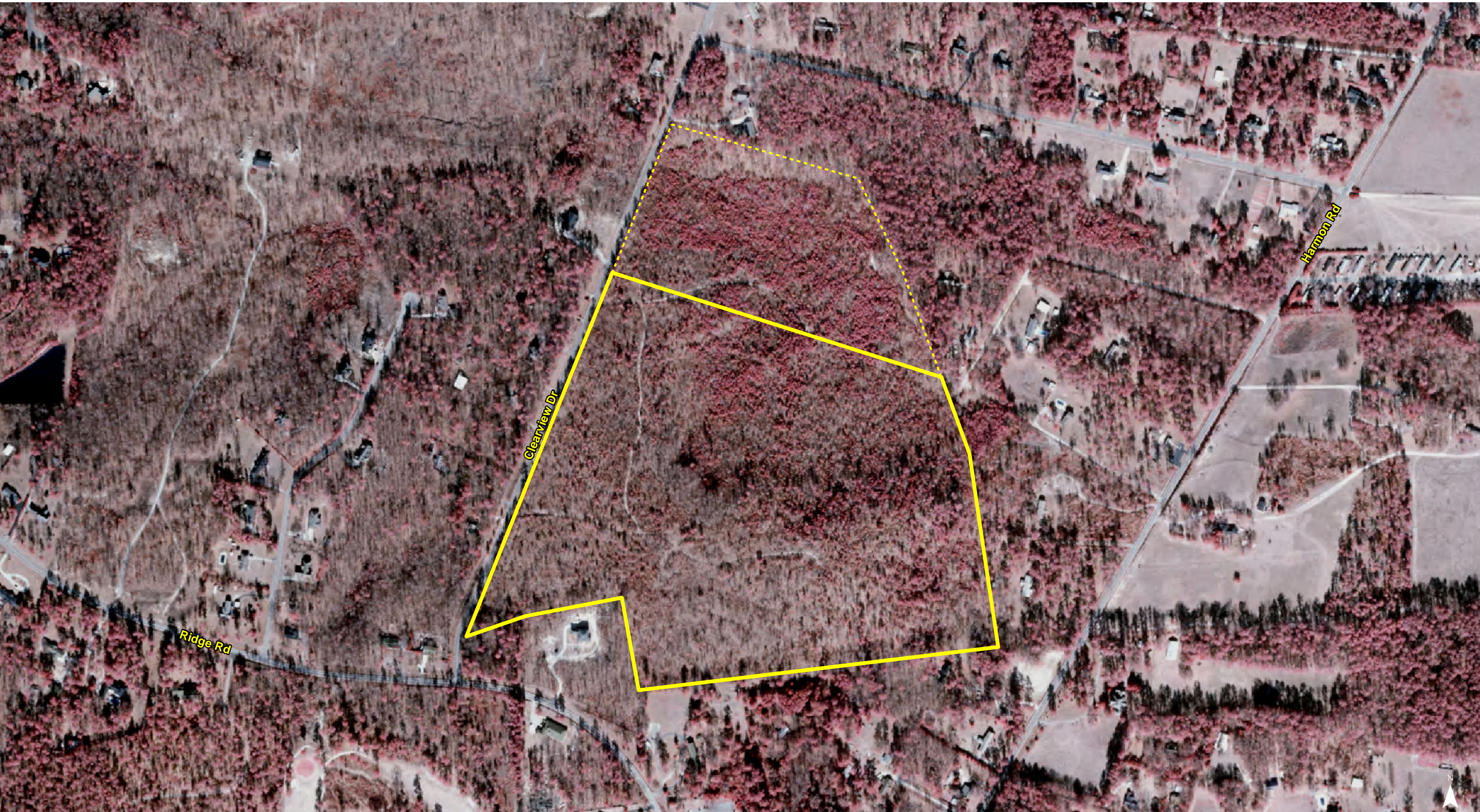
We obtained the information above from sources we believe to be reliable. However, we have not verified its accuracy and make no guarantee, warranty or representation about it. It is submitted subject to the possibility of errors, omissions, change of price, rental or other conditions, prior sale, lease or financing, or withdrawal without notice. We include projections, opinions, assumptions or estimates for example only, and they may not represent current or future performance of the property. You and your tax and legal advisors should conduct your own investigation of the property and transaction.

807 Gervais Street, Suite 200
Columbia, SC 29201
803 254 0100 tel
naicolumbia.com

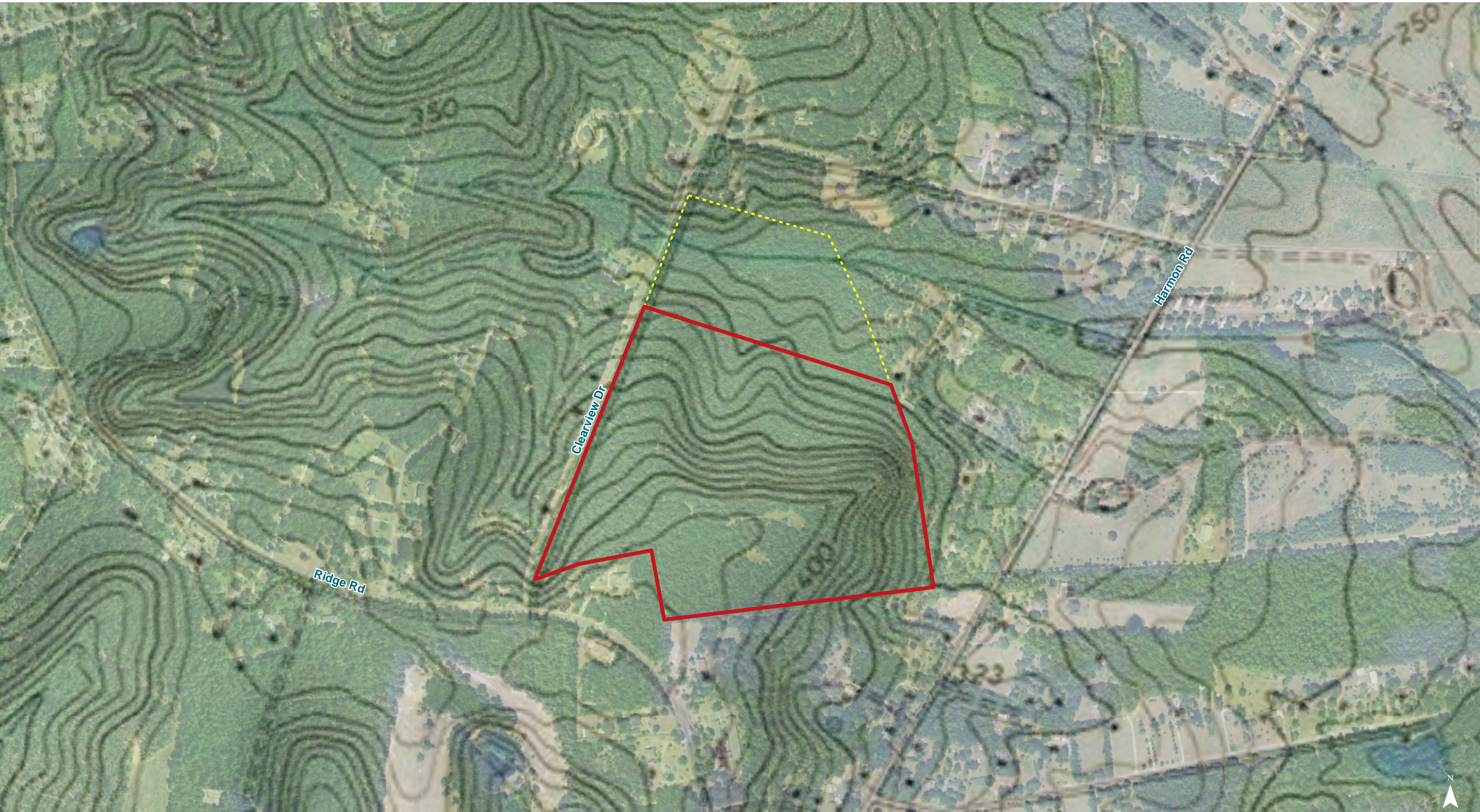


Map Updated: Tuesday, September 3, 2019. This information submitted is not guaranteed. Although obtained from reliable sources, all information should be confirmed prior to use or reliance upon the information. This document may not be reproduced in whole or in part without the express written consent of NAI Avant.

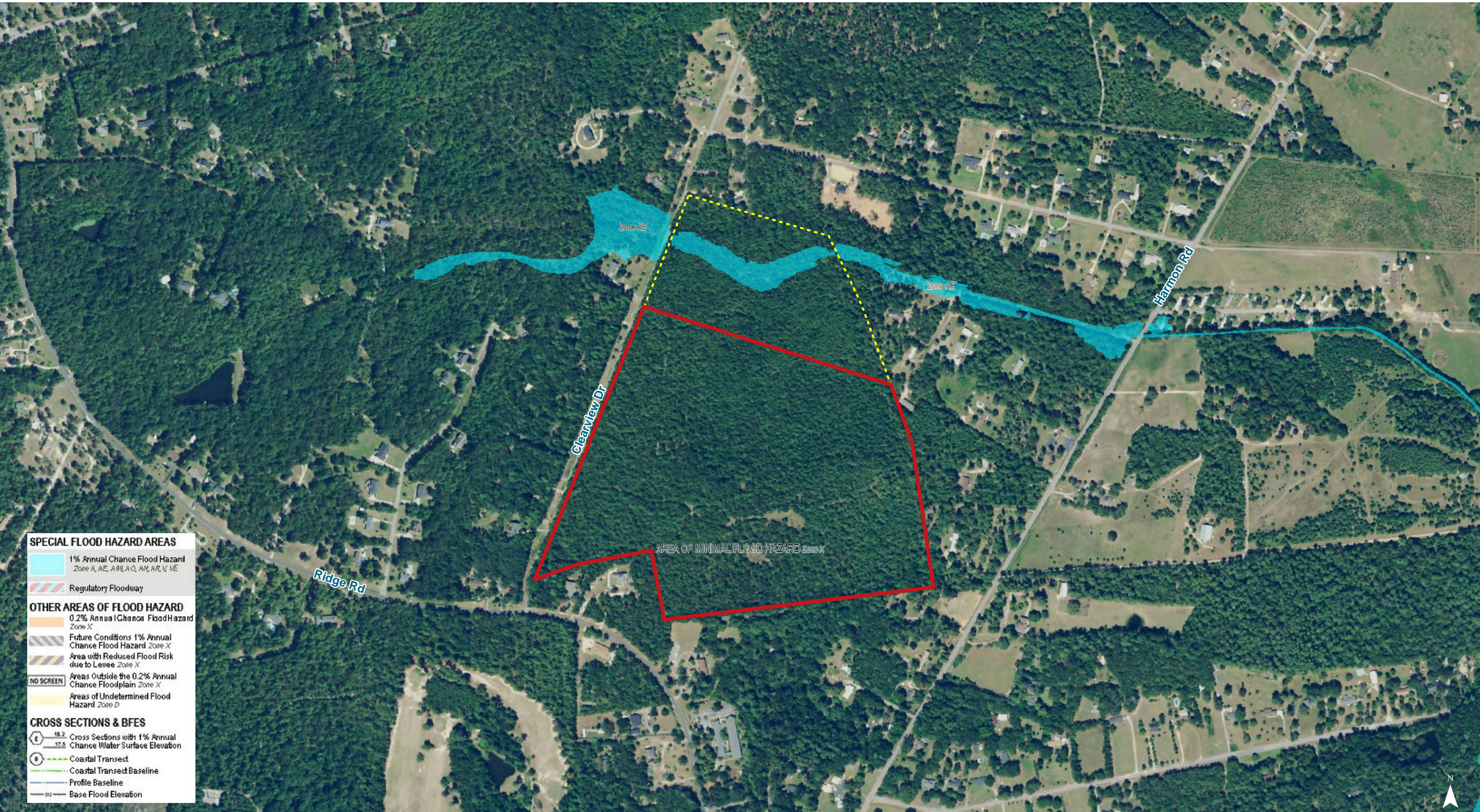




Map Updated: Tuesday, September 3, 2019. This information submitted is not guaranteed. Although obtained from reliable sources, all information should be confirmed prior to use or reliance upon the information. This document may not be reproduced in whole or in part without the express written consent of NAI Avant.



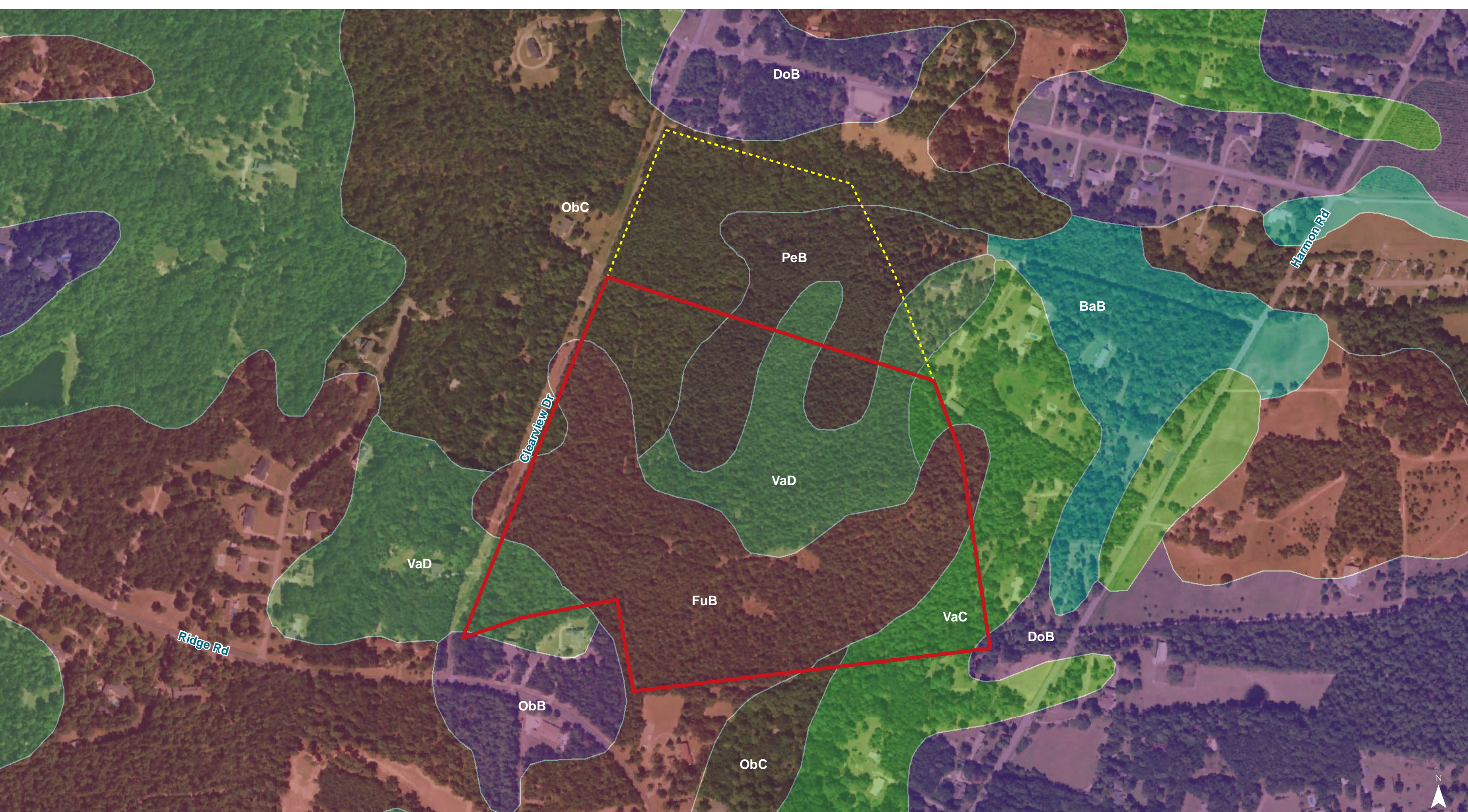
Map Updated: Tuesday, September 3, 2019. This information submitted is not guaranteed. Although obtained from reliable sources, all information should be confirmed prior to use or reliance upon the information. This document may not be reproduced in whole or in part without the express written consent of NAI Avant.



Map Updated: Tuesday, September 3, 2019. This information submitted is not guaranteed. Although obtained from reliable sources, all information should be confirmed prior to use or reliance upon the information. This document may not be reproduced in whole or in part without the express written consent of NAI Avant.



Map Updated: Tuesday, September 3, 2019. This information submitted is not guaranteed. Although obtained from reliable sources, all information should be confirmed prior to use or reliance upon the information. This document may not be reproduced in whole or in part without the express written consent of NAI Avant.



Map Updated: Tuesday, September 3, 2019. This information submitted is not guaranteed. Although obtained from reliable sources, all information should be confirmed prior to use or reliance upon the information. This document may not be reproduced in whole or in part without the express written consent of NAI Avant.

Map Unit Description (Brief, Generated)

Richland County, South Carolina

[Minor map unit components are excluded from this report]

Map unit: BaB - Blanton sand, 0 to 6 percent slopes

Component: Blanton (100%)

The Blanton component makes up 100 percent of the map unit. Slopes are 0 to 6 percent. This component is on marine terraces on sandhills. The parent material consists of sandy and loamy marine deposits. Depth to a root restrictive layer is greater than 60 inches. The natural drainage class is moderately well drained. Water movement in the most restrictive layer is moderately high. Available water to a depth of 60 inches is low. Shrink-swell potential is low. This soil is not flooded. It is not ponded. A seasonal zone of water saturation is at 48 inches during January, February, March, December. Organic matter content in the surface horizon is about 1 percent. Nonirrigated land capability classification is 3s. This soil does not meet hydric criteria.

Map unit: DoB - Dothan loamy sand, 2 to 6 percent slopes

Component: Dothan (100%)

The Dothan component makes up 100 percent of the map unit. Slopes are 2 to 6 percent. This component is on marine terraces on coastal plains. The parent material consists of plinthic loamy marine deposits. Depth to a root restrictive layer is greater than 60 inches. The natural drainage class is well drained. Water movement in the most restrictive layer is moderately high. Available water to a depth of 60 inches is moderate. Shrink-swell potential is low. This soil is not flooded. It is not ponded. A seasonal zone of water saturation is at 36 inches during January, February, March, April. Organic matter content in the surface horizon is about 0 percent. Nonirrigated land capability classification is 2e. This soil does not meet hydric criteria.

Map unit: FuB - Fuquay sand, 2 to 6 percent slopes

Component: Fuquay (100%)

The Fuquay component makes up 100 percent of the map unit. Slopes are 2 to 6 percent. This component is on marine terraces on coastal plains. The parent material consists of plinthic loamy marine deposits. Depth to a root restrictive layer is greater than 60 inches. The natural drainage class is well drained. Water movement in the most restrictive layer is moderately low. Available water to a depth of 60 inches is low. Shrink-swell potential is low. This soil is not flooded. It is not ponded. A seasonal zone of water saturation is at 60 inches during January, February, March. Organic matter content in the surface horizon is about 1 percent. Nonirrigated land capability classification is 2s. This soil does not meet hydric criteria.

Map unit: ObB - Orangeburg loamy sand, 2 to 6 percent slopes

Component: Orangeburg (100%)

The Orangeburg component makes up 100 percent of the map unit. Slopes are 2 to 6 percent. This component is on marine terraces on coastal plains. The parent material consists of loamy marine deposits. Depth to a root restrictive layer is greater than 60 inches. The natural drainage class is well drained. Water movement in the most restrictive layer is moderately high. Available water to a depth of 60 inches is moderate. Shrink-swell potential is low. This soil is not flooded. It is not ponded. There is no zone of water saturation within a depth of 72 inches. Organic matter content in the surface horizon is about 1 percent. Nonirrigated land capability classification is 2e. This soil does not meet hydric criteria.

Richland County, South Carolina

[Minor map unit components are excluded from this report]

Map unit: ObC - Orangeburg loamy sand, 6 to 10 percent slopes

Component: Orangeburg (100%)

The Orangeburg component makes up 100 percent of the map unit. Slopes are 6 to 10 percent. This component is on marine terraces on coastal plains. The parent material consists of loamy marine deposits. Depth to a root restrictive layer is greater than 60 inches. The natural drainage class is well drained. Water movement in the most restrictive layer is moderately high. Available water to a depth of 60 inches is moderate. Shrink-swell potential is low. This soil is not flooded. It is not ponded. There is no zone of water saturation within a depth of 72 inches. Organic matter content in the surface horizon is about 1 percent. Nonirrigated land capability classification is 4e. This soil does not meet hydric criteria.

Map unit: PeB - Pelion loamy sand, 2 to 6 percent slopes

Component: Pelion (90%)

The Pelion component makes up 90 percent of the map unit. Slopes are 2 to 6 percent. This component is on marine terraces on sandhills. The parent material consists of loamy marine deposits. Depth to a root restrictive layer is greater than 60 inches. The natural drainage class is moderately well drained. Water movement in the most restrictive layer is low. Available water to a depth of 60 inches is low. Shrink-swell potential is low. This soil is not flooded. It is not ponded. A seasonal zone of water saturation is at 12 inches during January, February, March, April, November, December. Organic matter content in the surface horizon is about 1 percent. Nonirrigated land capability classification is 2e. This soil does not meet hydric criteria.

Map unit: VaD - Vaucluse loamy sand, 10 to 15 percent slopes

Component: Vaucluse (100%)

The Vaucluse component makes up 100 percent of the map unit. Slopes are 10 to 15 percent. This component is on marine terraces on sandhills. The parent material consists of loamy marine deposits. Depth to a root restrictive layer is greater than 60 inches. The natural drainage class is well drained. Water movement in the most restrictive layer is low. Available water to a depth of 60 inches is low. Shrink-swell potential is low. This soil is not flooded. It is not ponded. There is no zone of water saturation within a depth of 72 inches. Organic matter content in the surface horizon is about 1 percent. Nonirrigated land capability classification is 4e. This soil does not meet hydric criteria.