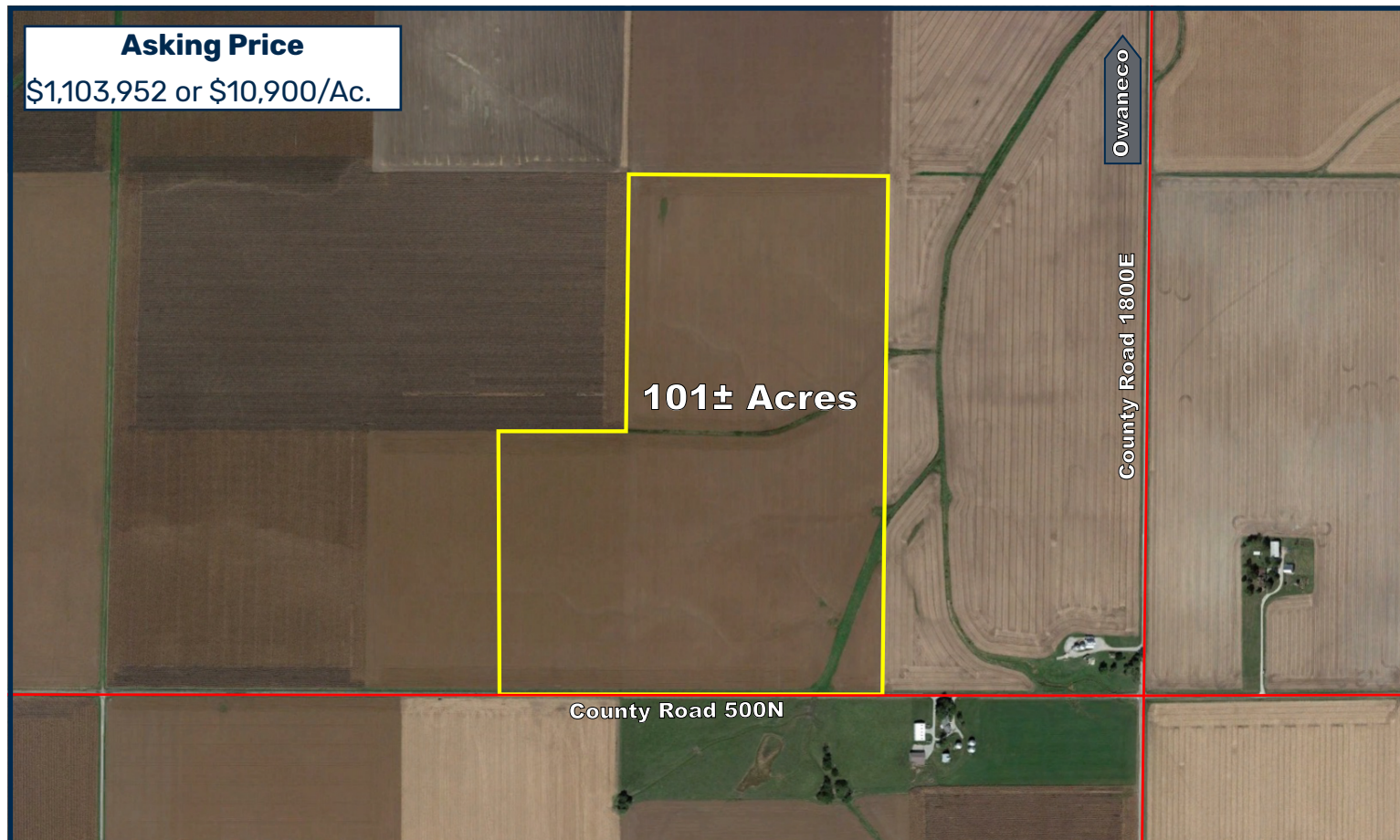


FARMLAND FOR SALE

Christian County, Illinois - 101± Acres



Property Description

A quality Central IL farm located 4.25± miles south of Owaneco, Illinois. The farm consists of 101.28± gross acres and 102± tillable acres. The farm has predominantly Class A soils with a Productivity Index of 133.3. The farm also has 1.2 acres enrolled in the Conservation Reserve Program.

Location & Directions

Section 4, Rosamond Township, Christian County, IL (T11N-R1W)

From the intersection of County Road 1800E (Main St.) and IL Highway 29 in Owaneco, head south on County Road 1800E for 4.25 miles to County Road 500N. Turn right/west onto County Road 500N, travel for 0.25 miles, and the farm will begin on your right/north.

- 6 miles west of Pana
- 9 miles southeast of Moweaqua
- 13 miles east of Morrisonville

MurrayWiseAssociates.com



ERIC SARFF

Designated Managing Broker #471.020806
Email: eric@mwallc.com

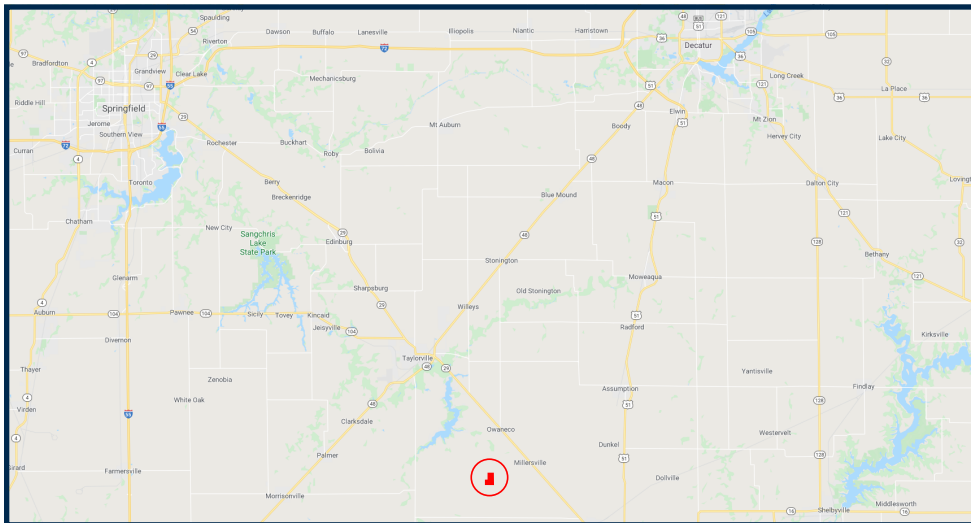
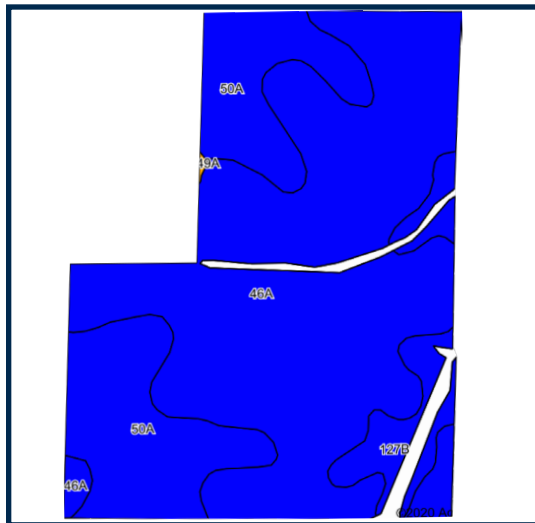
MURRAY WISE ASSOCIATES LLC

1605 S State Street, STE 110
Champaign, IL 61820
Phone: (217) 398-6400



FARMLAND FOR SALE

Christian County, Illinois - 101± Acres



Area Symbol: IL021, Soil Area Version: 14

Code	Soil Description	Acres	Percent of field	Il. State Productivity Index Legend	Subsoil rooting ^a	Corn Bu/A	Soybeans Bu/A	Crop productivity index for optimum management
46A	Herrick silt loam, 0 to 2 percent slopes	66.46	66.9%		FAV	181	58	133
50A	Virden silty clay loam, 0 to 2 percent slopes	26.12	26.3%		FAV	182	59	135
**127B	Harrison silt loam, 2 to 5 percent slopes	6.61	6.7%		FAV	**177	**54	**129
249A	Edinburg silty clay loam, 0 to 2 percent slopes	0.09	0.1%		FAV	172	55	127
Weighted Average						181	58	133.3



MWA
MURRAY WISE ASSOCIATES

ERIC SARFF

Designated Managing Broker #471.020806
Email: eric@mwallc.com

MURRAY WISE ASSOCIATES LLC

1605 S State Street, STE 110
Champaign, IL 61820
Phone: (217) 398-6400

