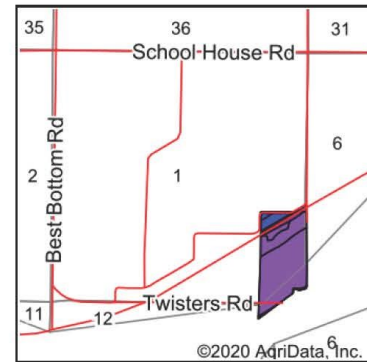


40 Acres "Rhineland" Montgomery County, MO

Soils Map

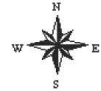


Soils data provided by USDA and NRCS.



State: Missouri
County: Montgomery
Location: 1-45N-6W
Township: Loutre
Acres: 43.19
Date: 8/27/2020

Maps Provided By:
surety
CUSTOMIZED ONLINE MAPPING
© AgriData, Inc. 2020 www.AgriDataInc.com



Area Symbol: MO139, Soil Area Version: 20													
Code	Soil Description	Acres	Percent of field	Non-Irr Class Legend	Non-Irr Class *c	Common bermudagrass	Orchardgrass red clover	Tall fescue	Warm season grasses	*n NCCPI Overall	*n NCCPI Corn	*n NCCPI Small Grains	*n NCCPI Soybeans
66126	Haynie-Treloar-Blake complex, 0 to 2 percent slopes, frequently flooded	38.00	88.0%		Vw	8	9	8	10	18	6	18	2
66061	Peers-Lowmo-SansDessein complex, 0 to 2 percent slopes, occasionally flooded	3.98	9.2%		Ilw	8	8	8	9	65	61	47	65
66019	Lowmo silt loam, 0 to 2 percent slopes, occasionally flooded	0.66	1.5%		Ilw					63	62	47	63
99001	Water	0.55	1.3%		VIII								
Weighted Average						7.8	8.7	7.8	9.6	*n 22.8	*n 11.8	*n 20.9	*n 8.7

*n: The aggregation method is "Weighted Average using all components"

*c: Using Capabilities Class Dominant Condition Aggregation Method

Soils data provided by USDA and NRCS.