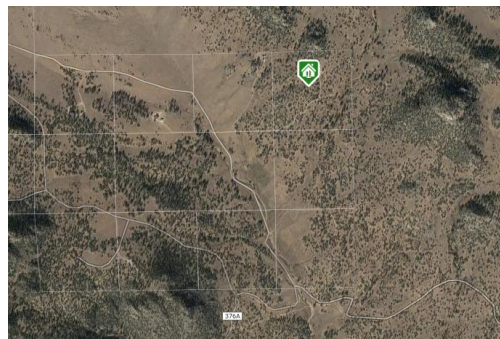




Directions: From Johnson Village, take Highway 24/285 towards Trout Creek Pass ~ 1.8 miles and then turn left onto CR 304. Take your first right at the T across from the Collegiate Peaks Recreational Site sign. Travel 1.2 miles to Big Sandy Way street sign. Turn right and drive through the parking area. Follow FS road 376A signs ~ 1.1 miles to the Big Sandy entrance gate. Follow road approximately 1.5 miles to shared driveway marked with house numbers 30102 and 29757. Continue straight up drive to top through the red gate.



Lynette@FirstColorado.com



LISTING AGENT

Lynette Neesen
Broker Associate, GRI
719-207-0211 Cell



FirstColorado.com - 719-395-0200 - 306 E. Main Street, Buena Vista, CO 81211

ALL DATA, MEASUREMENTS, SQUARE FOOTAGE, ETC. DEEMED RELIABLE. NO WARRANTIES OR REPRESENTATIONS EXPRESSED OR IMPLIED.

29600 Big Sandy Way

Buena Vista, Colorado 81211



\$785,000
MLS #5374338

40 Acre Colorado Mountain Parcel
Bordered on 2 Sides by National Forest



FirstColorado.com - 719-395-0200 - 306 E. Main Street, Buena Vista, CO 81211

ALL DATA, MEASUREMENTS, SQUARE FOOTAGE, ETC. DEEMED RELIABLE. NO WARRANTIES OR REPRESENTATIONS EXPRESSED OR IMPLIED.



PROPERTY AT A GLANCE

40.50 Acres
Borders National Forest on 2 Sides
Panoramic Mtn. & Valley Views
Rock Outcroppings & Pinon Trees
1,260 SF Residence, 2 Beds + Loft, 2 Baths
23' High Aspen Ceilings
6 Car Attached Garage
Loafing Shed, Tack Room, Corral
\$300 Annual HOA Dues
2020 Taxes: \$1,455



FirstColorado.com - 719-395-0200 - 306 E. Main Street, Buena Vista, CO 81211

ALL DATA, MEASUREMENTS, SQUARE FOOTAGE, ETC. DEEMED RELIABLE. NO WARRANTIES OR REPRESENTATIONS EXPRESSED OR IMPLIED.

FirstColorado.com - 719-395-0200 - 306 E. Main Street, Buena Vista, CO 81211

ALL DATA, MEASUREMENTS, SQUARE FOOTAGE, ETC. DEEMED RELIABLE. NO WARRANTIES OR REPRESENTATIONS EXPRESSED OR IMPLIED.