



GORGEIOUS 30 ACRE RANCHETTE W/ARENA

2501 ZION HILL RD. WEATHERFORD, TX



STEPHEN
REICH GROUP
WILLIAMS TREW REAL ESTATE

Williamstrew[☆]
A DIVISION OF EBBY HALLIDAY REAL ESTATE, INC.

LISTED BY **STEPHEN REICH GROUP** OF WILLIAMS TREW REAL ESTATE

PROPERTY SUMMARY

DESCRIPTION

Gorgeous 30 acre Ranchette just minutes North of Weatherford that has it all! Lets start with a 4400 + Sq. Ft Custom home! Open concept kitchen with commercial grade appliances, 4 bedrooms, 3.5 bath, and a large game room. Large back porch with built-in grill and bar open up into a fabulous diving pool with splash pool. Property also features a sport court, large pond with dock, 6 stall horse barn with covered runs, horse walker, hay barn and covered arena. 2 bedroom 2 bath guest home is perfect for the mother-in-law or the ranch help. There are also two large workshops so everything can be kept under cover. One shop has 1800 sq. feet of office and the other is complete with a personal gym.

LOCATION

CITY	Weatherford
County	Parker
Road Frontage	FM Road
Topography	Cleared/Varied
Sale Type	RES-F&R

OFFER SUMMARY

List Price	\$1,850,000
Lot Size	30.29 Acres
Utilities	Septic, Well
AG Exemption	Yes

HIGHLIGHTS

- 4,406 SF CUSTOM HOME
- FABULOUS DIVING POOL
- SPORTS COURT
- 2 BARNs
- COVERED ARENA
- 2 LARGE WORKSHOPS

LISTING PRESENTED BY:



STEPHEN REICH
817-597-8884
stephen.reich@williamstrew.com



DENNY RALLS
817-965-3464
denny.ralls@williamstrew.com



PARKER COUNTY OFFICE

405 S. FM 1187, STE. 400
ALED0, TX 760089

FARM & RANCH • RESIDENTIAL • COMMERCIAL-DEVELOPMENT • LAND

PROPERTY PHOTOS



STEPHEN REICH – 817.597.8884
DENNY RALLS – 817.965.3464



WilliamsTrew 
A DIVISION OF EBBY HALLIDAY REAL ESTATE, INC.

PROPERTY PHOTOS

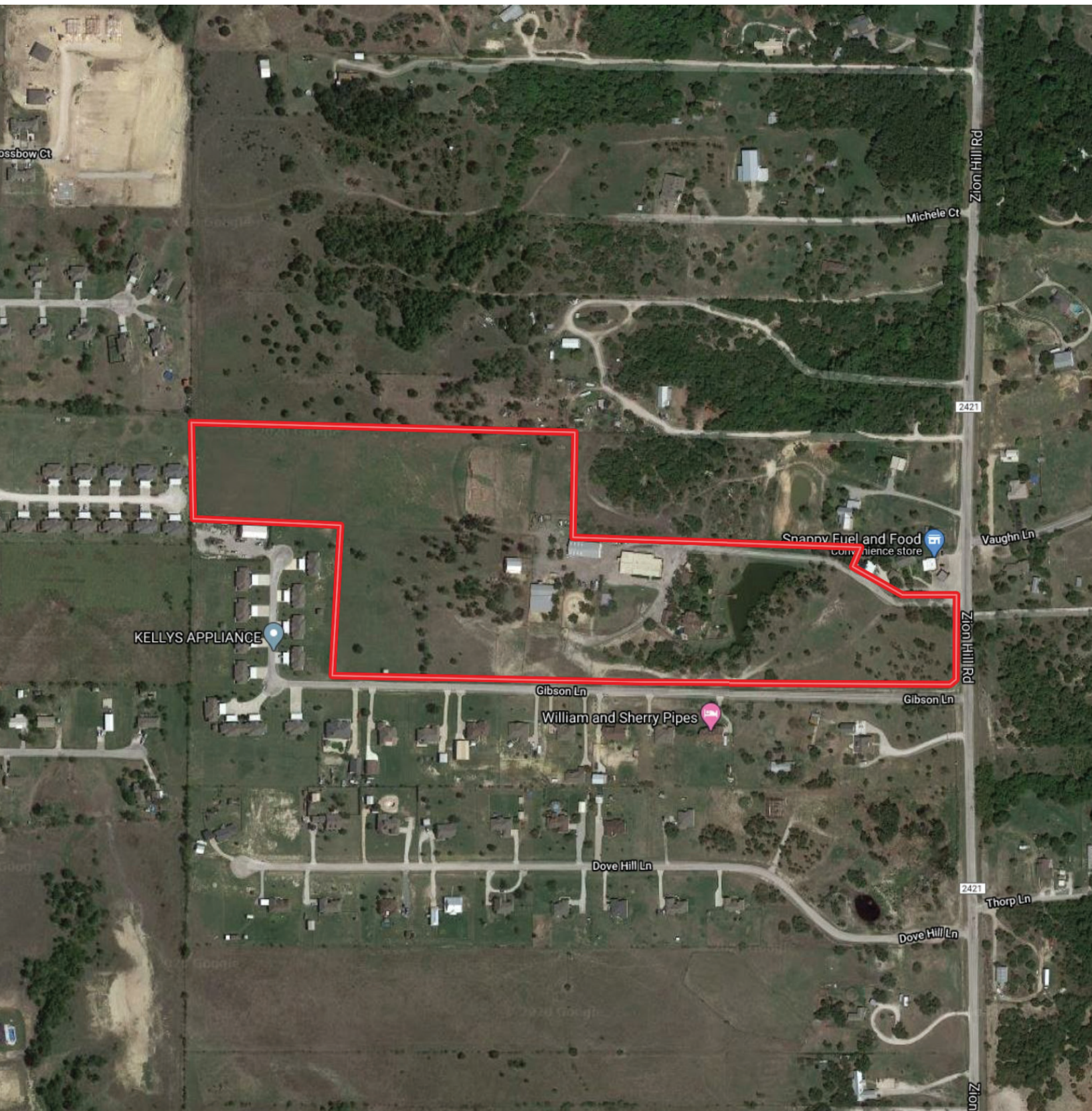


STEPHEN REICH – 817.597.8884
DENNY RALLS – 817.965.3464



WilliamsTrew
A DIVISION OF EBBY HALLIDAY REAL ESTATE, INC.

AERIAL MAP



STEPHEN REICH – 817.597.8884
DENNY RALLS – 817.965.3464



WilliamsTrew 
A DIVISION OF EBBY HALLIDAY REAL ESTATE, INC.