

NEW LISTING

Visit highlandranches.com for additional maps and photos.

Soldier Creek Ranch Land

272 acres in Wasatch County, Utah



EXECUTIVE SUMMARY:

List Price: \$799,000

Dan Nelson | Mike Nelson

801-482-7564 | daniel@hciutah.com

Notice: This information is believed to be accurate, but no warranty is expressed or implied. Highland Commercial insists that interested parties conduct their own research and investigations. The property is offered subject to price change and withdrawal without notice. No obligations will be created unless a purchase contract is signed by both buyer and seller. We welcome the cooperation of participating brokers; please contact us for our commission-sharing policies. All images and materials are copyright protected and are the property of Highland Commercial, Inc.

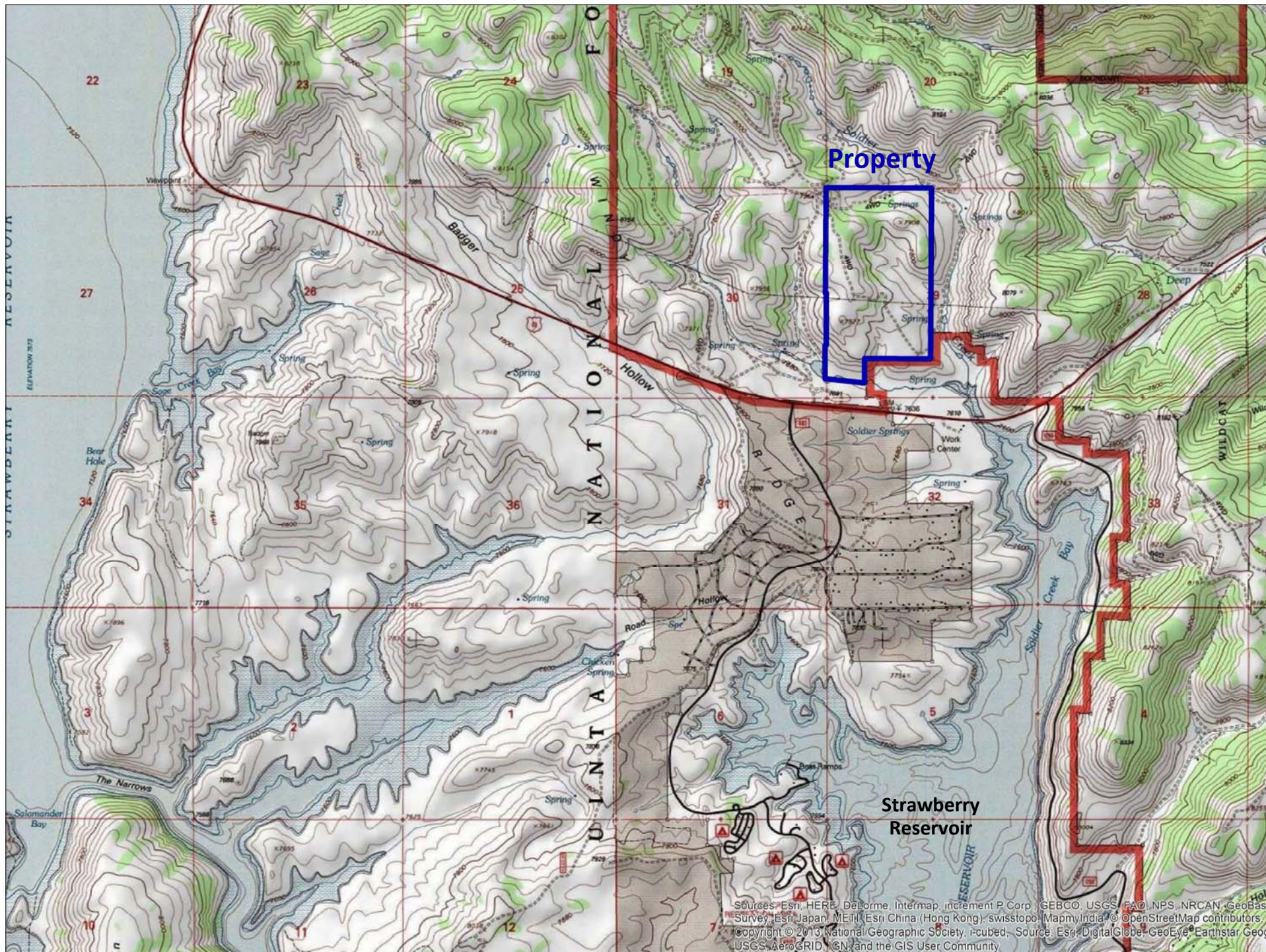
- Stunning mountain property with aspens and reservoir views
- Approximately 272 acres (per County), just 1/4 mile off Highway 40 in Wasatch County, Utah
- Located north of the Soldier Creek arm of Strawberry Reservoir
- Rolling hillsides with aspen groves
- "Lot of Record" designation for single dwelling. Base zoning is P-160 (preservation, 160-acre minimum)
- Livestock water right numbers: 43-7128, 43-7127
- Property taxes (2020): \$46.60 (greenbelt)
- Buyer to determine future utilities: culinary well, power (nearby), septic, propane
- Wasatch County parcel: 00-0010-8063



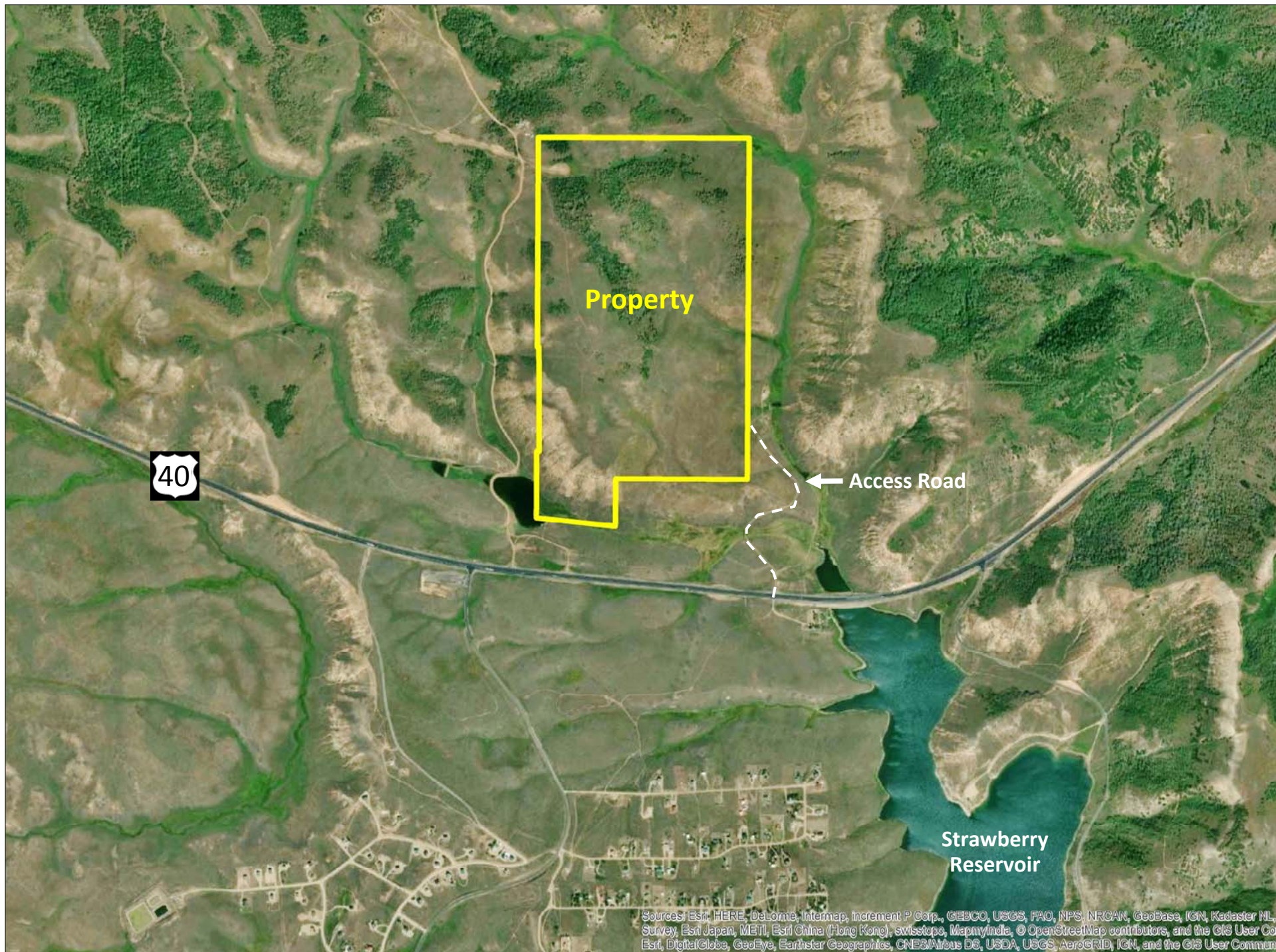
2733 East Parley's Way, Suite 304
Salt Lake City, UT 84109
801-487-6100

www.highlandranches.com





Sources: Esri, HERE, DeLorme, Intermap, increment P Corp., GEBCO, USGS, FAO, NPS, NRCAN, Geobase, Survey, Esri Japan, METI, Esri China (Hong Kong), swisstopo, MapmyIndia, © OpenStreetMap contributors, and the GIS User Community



Sources: Esri, HERE, DeLorme, Intermap, increment P Corp., GEBCO, USGS, FAO, NPS, NRCAN, GeoBase, IGN, Kadaster NL, Survey, Esri Japan, METI, Esri China (Hong Kong), swisstopo, MapmyIndia, © OpenStreetMap contributors, and the GIS User Community, Esri, DigitalGlobe, GeoEye, Earthstar Geographics, CNES/Airbus DS, USDA, USGS, AeroGRID, IGN, and the GIS User Community