

# COMMERCIAL PROPERTY

EUDORA, KANSAS  
DOUGLAS COUNTY

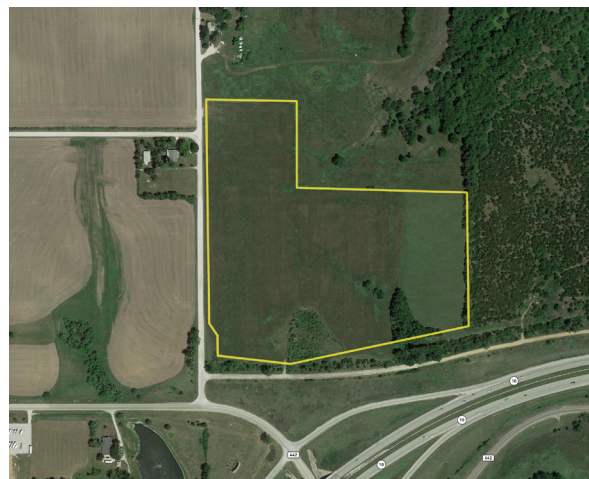


## K-10 COMMERCIAL



### PROPERTY SUMMARY

Developers pay attention here! 28 acres of commercial development property at the intersection of E 2300 Road and N 1400 Road right off the K10 exit just east of Eudora, Kansas. Utilities are at the SW corner, access to K10 is outstanding, and the property lends itself to countless possibilities. This is your opportunity to establish your business along the quickly growing K10 corridor. Call Kelvin at 785-865-6266 or Brian at 785-423-1220 to schedule a showing.



### LISTING DETAILS

**LOCATION:** 1420 E 2300 Road, Eudora, KS

**SIZE:** 28 +/- Acres

**ASKING PRICE:** \$800,000

**ZONING:** Commercial

### CONTACTS

**KELVIN HECK**

785.865.6266

Kelvin@hecklandco.com

**BRIAN PINE**

785.423.1220

Brian@hecklandco.com