

Turnberry Farms

715 Slatton Shoals Road Ext. Piedmont, SC 29673

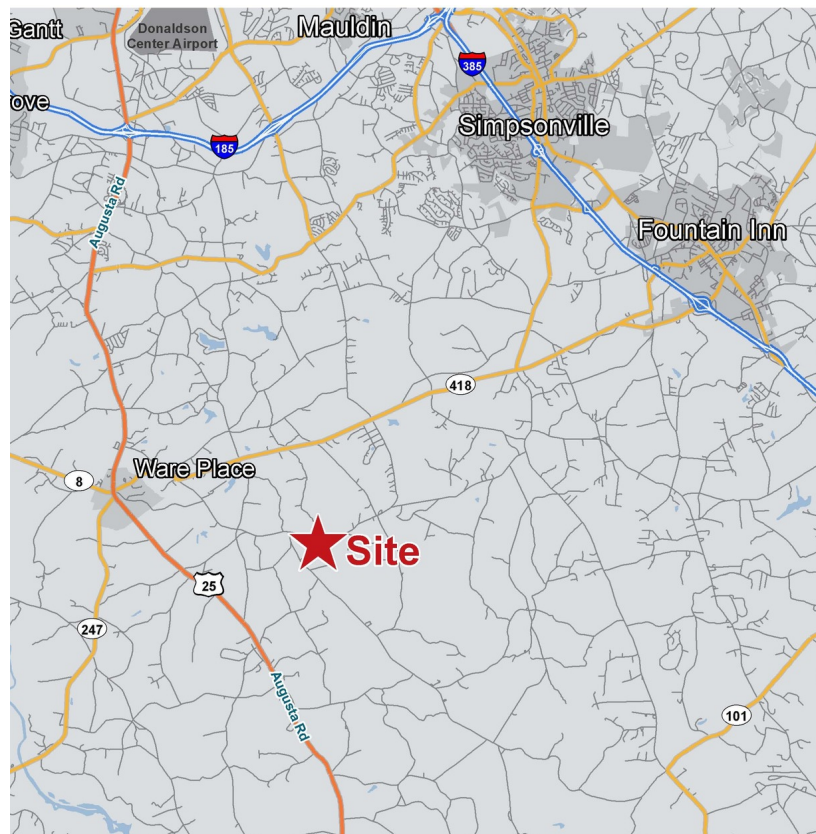


\$199,000



Estate Lot Development | 11.45 Acres

- THE ONLY AVAILABLE LOT IN TURNBERRY FARMS
- Turnberry Farms is a highly restricted estate lot development consisting of twenty 10+/- acre lots in a highly desirable area of southern Greenville County
- Asking Price: \$17,380/Acre
- Greenville County Tax Map # 0587040101400
- 160 Ft. of frontage on Slatton Shoals Road
- An excellent blend of fields, mature hardwoods, & creeks
- Equestrian Friendly
- Several excellent home sites
- Located 25 minutes from downtown Greenville, 15 minutes from Simpsonville retail center, and approximately one mile from the historic town of Fork Shoals, the award winning Fork Shoals Elementary, Happy Cow Creamery, Cedar Falls Park, and City Scape Winery



Clarence "Rusty" Hamrick
+1 864 232 9040
rhamrick@naiearlefurman.com

No Warranty Or Representation, Express Or Implied, Is Made As To The Accuracy Of The Information Contained Herein. And The Same Is Submitted Subject To Errors, Omissions, Change Of Price, Rental Or Other Conditions, Prior Sale, Lease Or Financing, Or Withdrawal Without Notice, And Of Any Special Listing Conditions Imposed By Our Principals No Warranties Or Representations Are Made As To The Condition Of The Property Or Any Hazards Contained Therein Are Any To Be Implied.



101 E Washington St
Greenville, SC 29601
naief.com

Property Description

715 Slatton Shoals Road Ext. Piedmont, SC 29673



Property Overview

Turnberry Farms was originally a 200 acre cattle farm made up almost entirely of mature, high quality upland hardwoods, rolling pastures, and flowing creeks. Today this incredibly unique estate lot subdivision offers the best aspects of rural living that southern Greenville County has to offer. The property is located approximately one mile from the area's most treasured assets: 1) the historic town of Fork Shoals, 2) the award winning Fork Shoals Elementary School, 3) Happy Cow Creamery, 4) City Scape Winery, and 5) Cedar Falls Park. Turnberry is part of a truly thriving rural community with convenient access to downtown Greenville and Simpsonville/Fountain Inn as well.

Property Photos

715 Slatton Shoals Road Ext. Piedmont, SC 29673



Clarence "Rusty" Hamrick
+1 864 232 9040
rhamrick@naiearlefurman.com

No Warranty Or Representation, Express Or Implied, Is Made As To The Accuracy Of The Information Contained Herein, And The Same Is Submitted Subject To Errors, Omissions, Change Of Price, Rental Or Other Conditions, Prior Sale, Lease Or Financing, Or Withdrawal Without Notice, And Of Any Special Listing Conditions Imposed By Our Principals No Warranties Or Representations Are Made As To The Condition Of The Property Or Any Hazards Contained Therein Are Any To Be Implied.



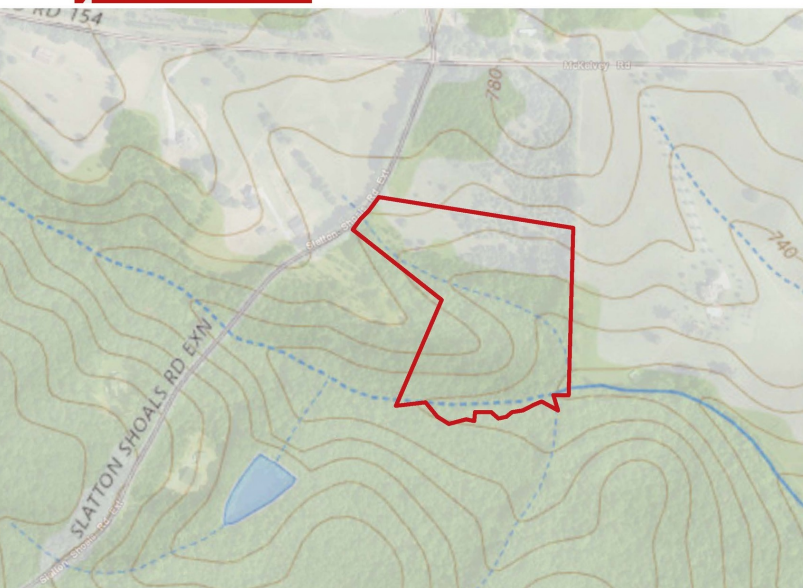
MAP SET

715 Slatton Shoals Road Ext. Piedmont, SC 29673

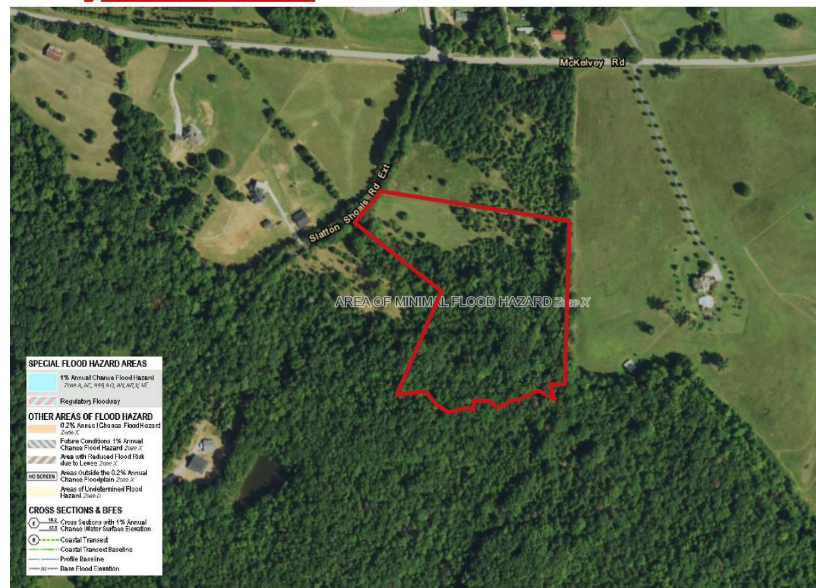
2006 Infrared



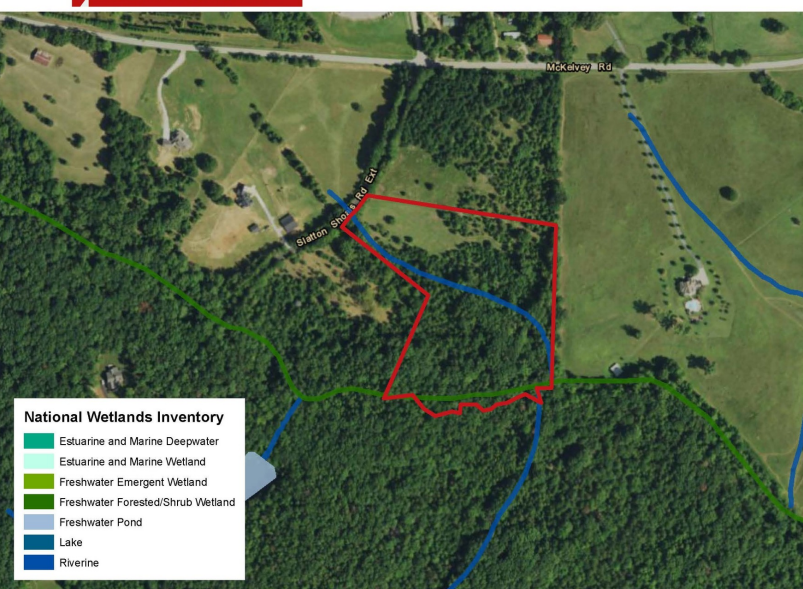
Topographical Map



FEMA Flood Zones



National Wetlands Inv.



Soil Survey



✉ Clarence "Rusty" Hamrick
+1 864 232 9040
rhamrick@naiearlefurman.com

No Warranty Or Representation, Express Or Implied, Is Made As To The Accuracy Of The Information Contained Herein, And The Same Is Submitted Subject To Errors, Omissions, Change Of Price, Rental Or Other Conditions, Prior Sale, Lease Or Financing, Or Withdrawal Without Notice, And Of Any Special Listing Conditions Imposed By Our Principals No Warranties Or Representations Are Made As To The Condition Of The Property Or Any Hazards Contained Therein Are Any To Be Implied.

