

Agricultural-Commercial-Residential



2281 E Hueneme Rd. - Approx 66.066 Acres

- Premium Location & Growing Conditions for Strawberries
- Located at the NEC of Hueneme Rd & Olds Rd, just outside the Oxnard City CURB – West of Rice Rd & in Close Proximity to Hwy 1
- Comprised of 4 parcels + Add'l benefit of SCE Lic Agmt for 8.85 Acs
- Private Well - (Oxnard City Water connection also in place)
- Located along the Oxnard City GREAT (reclaimed water) line
- Zoned AE 40 Acre Minimum & Subject to Ventura County SOAR

For Sale at \$6,550,000

Lynn Osslund 469.2053, Lic #00623752 or Jillian Bailey 340.0015, Lic #00806262

JACOBSON REALTY, INC.

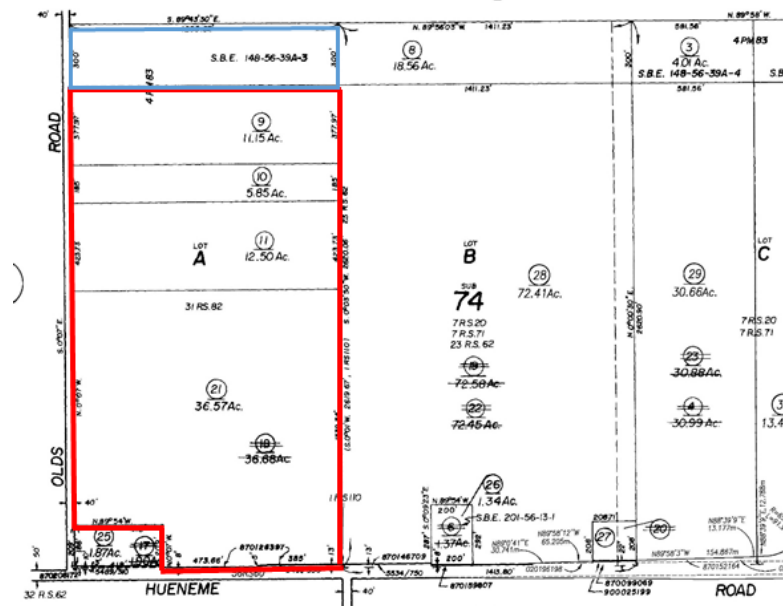
445 Rosewood Avenue, Suite J Camarillo, CA 93010

805.389.4747 phone 805.389.4744 fax

Email: jacobsonrealtyinc@gmail.com Web Address: www.jrealty.com




66.066 +/- Acres on the Oxnard Plain, CA



2281 E Hueneme Rd – Prime Ventura County Strawberry Ground

JACOBSON REALTY, INC.

 Farmed per license agreement
w/ SoCal Edison – 8.85 add'l acs

445 Rosewood Avenue, Suite J , Camarillo, CA 93010
805.389.4747 phone 805.389.4744 fax

jacobsonrealtyinc@gmail.com www.jrealty.com

Lynn Osslund 805.469.2053 or Jillian Bailey 805.340.0015

Lic #00623752 Lic. #00305498 Lic #00806262



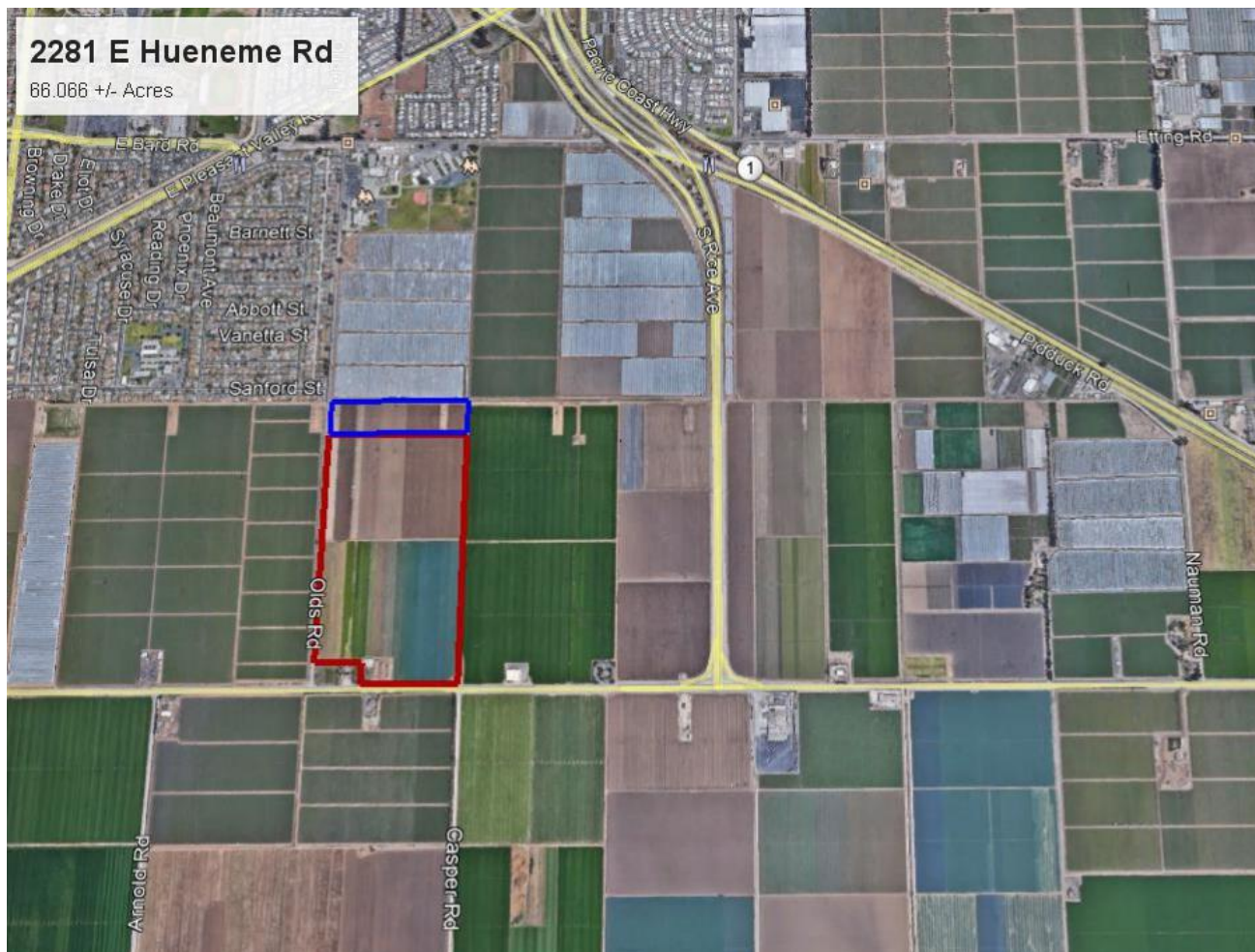
2281 E Hueneme Rd., Oxnard, CA - 66.066 +/- Acres, Ventura County

The information above has been obtained from sources believed to be reliable. While we do not doubt its accuracy, we have not verified it and make no guarantee, warranty or representation about it. It is your responsibility to independently confirm its accuracy and completeness. Any projections, opinions, assumptions or estimates used are for example only and do not represent the current or future performance of the property. The value of this transaction to you depends on tax and other factors which should be evaluated by your tax, financial and legal advisors. You and your advisors should conduct a careful, independent investigation of the property to determine to your satisfaction the suitability of the property for your needs.



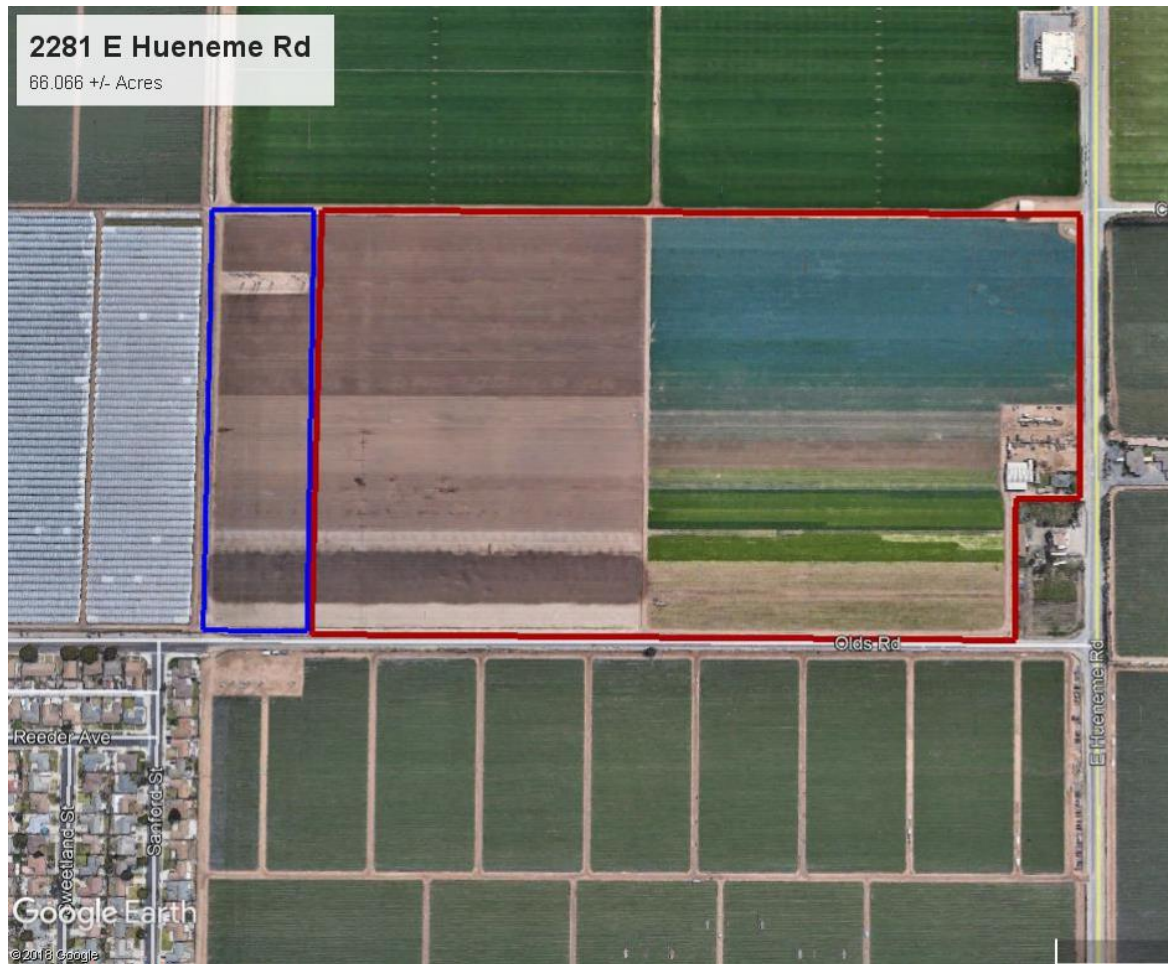
2281 E Hueneme Rd., Oxnard, CA - 66.066 +/- Acres, Ventura County

The information above has been obtained from sources believed to be reliable. While we do not doubt its accuracy, we have not verified it and make no guarantee, warranty or representation about it. It is your responsibility to independently confirm its accuracy and completeness. Any projections, opinions, assumptions or estimates used are for example only and do not represent the current or future performance of the property. The value of this transaction to you depends on tax and other factors which should be evaluated by your tax, financial and legal advisors. You and your advisors should conduct a careful, independent investigation of the property to determine to your satisfaction the suitability of the property for your needs.



2281 E Hueneme Rd, Oxnard, CA - 66.066 +/- Acres in Ventura County on the Oxnard Plain

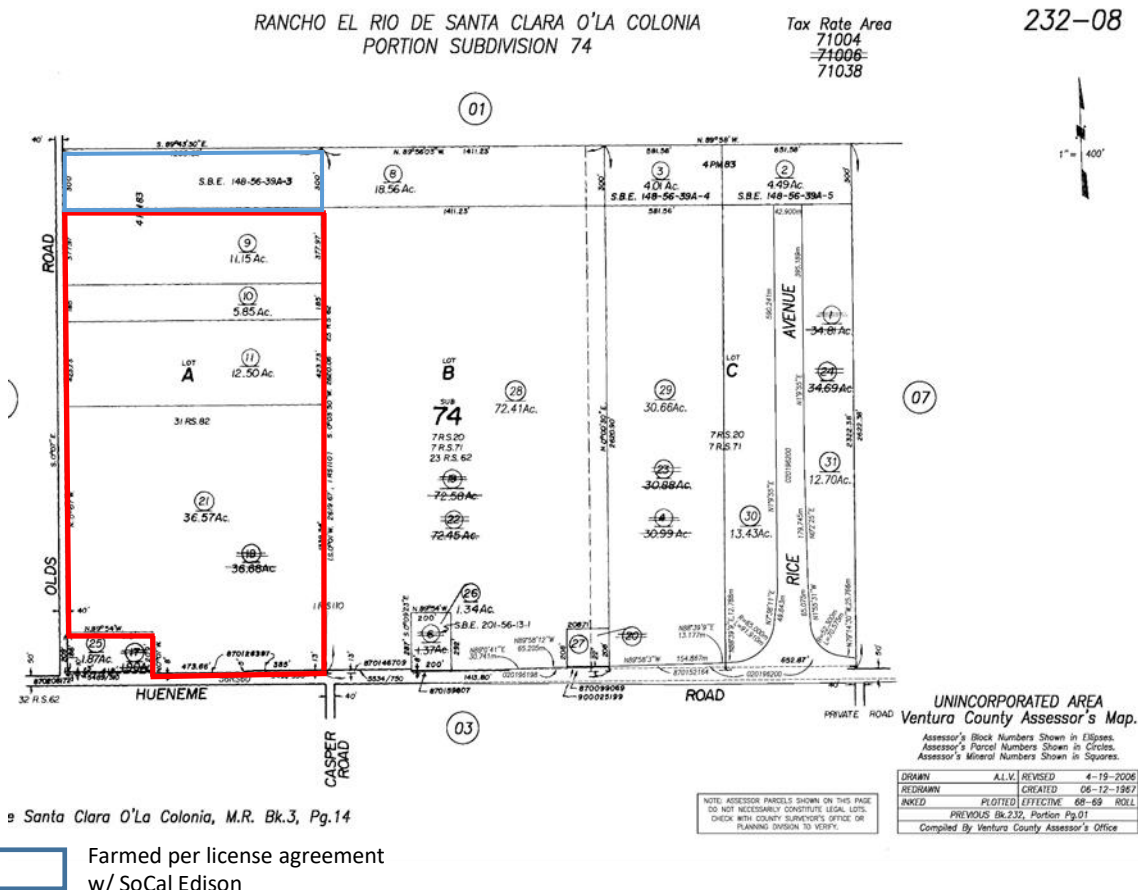
The information above has been obtained from sources believed to be reliable. While we do not doubt its accuracy, we have not verified it and make no guarantee, warranty or representation about it. It is your responsibility to independently confirm its accuracy and completeness. Any projections, opinions, assumptions or estimates used are for example only and do not represent the current or future performance of the property. The value of this transaction to you depends on tax and other factors which should be evaluated by your tax, financial and legal advisors. You and your advisors should conduct a careful, independent investigation of the property to determine to your satisfaction the suitability of the property for your needs.



Farmed per license agreement w/ SoCal Edison

66.066 +/- Acres of Prime Farmland on the Oxnard Plain, Ventura County, CA

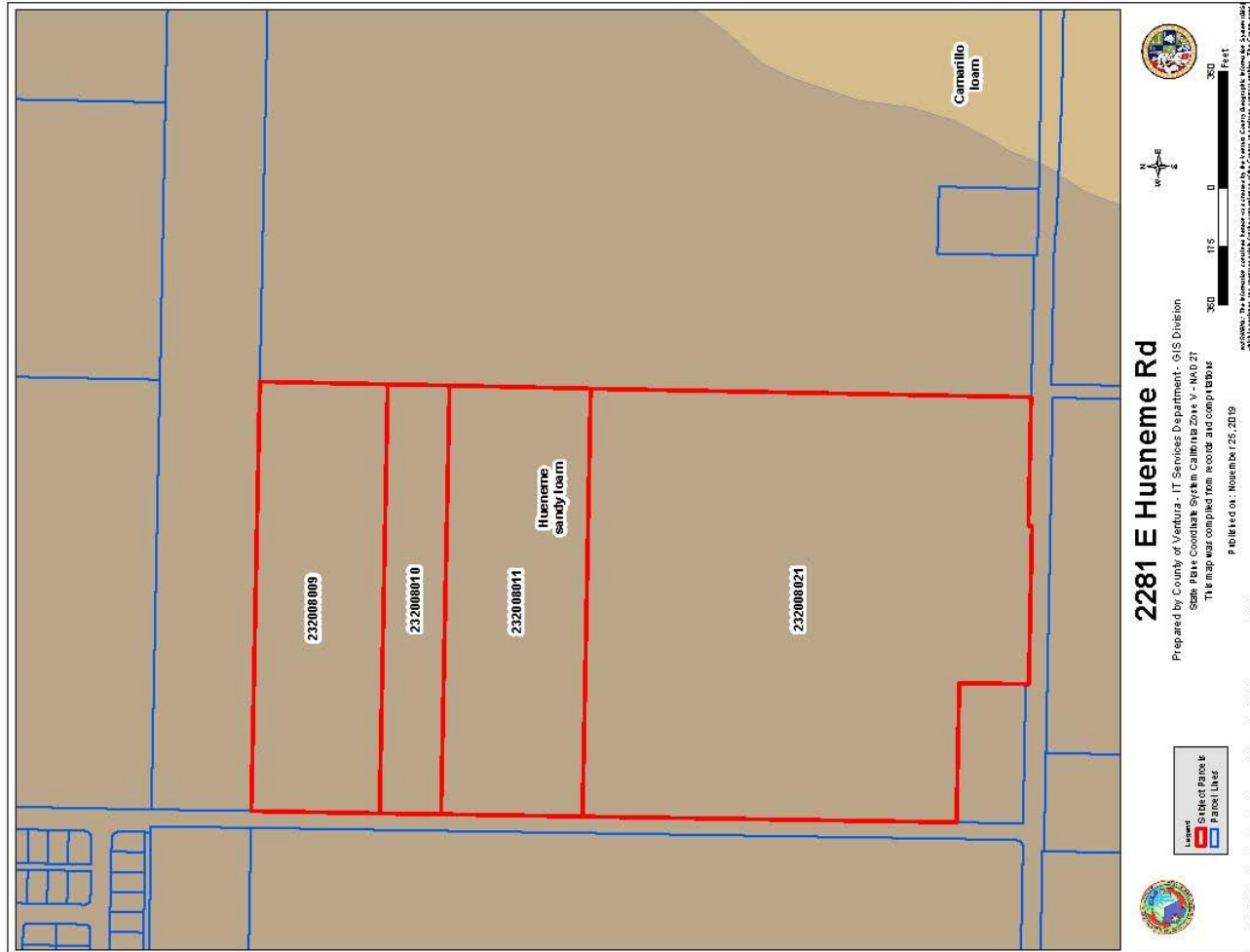
66.066 +/- Acres of Prime Strawberry Ground on the Oxnard Plain, Ventura County, CA





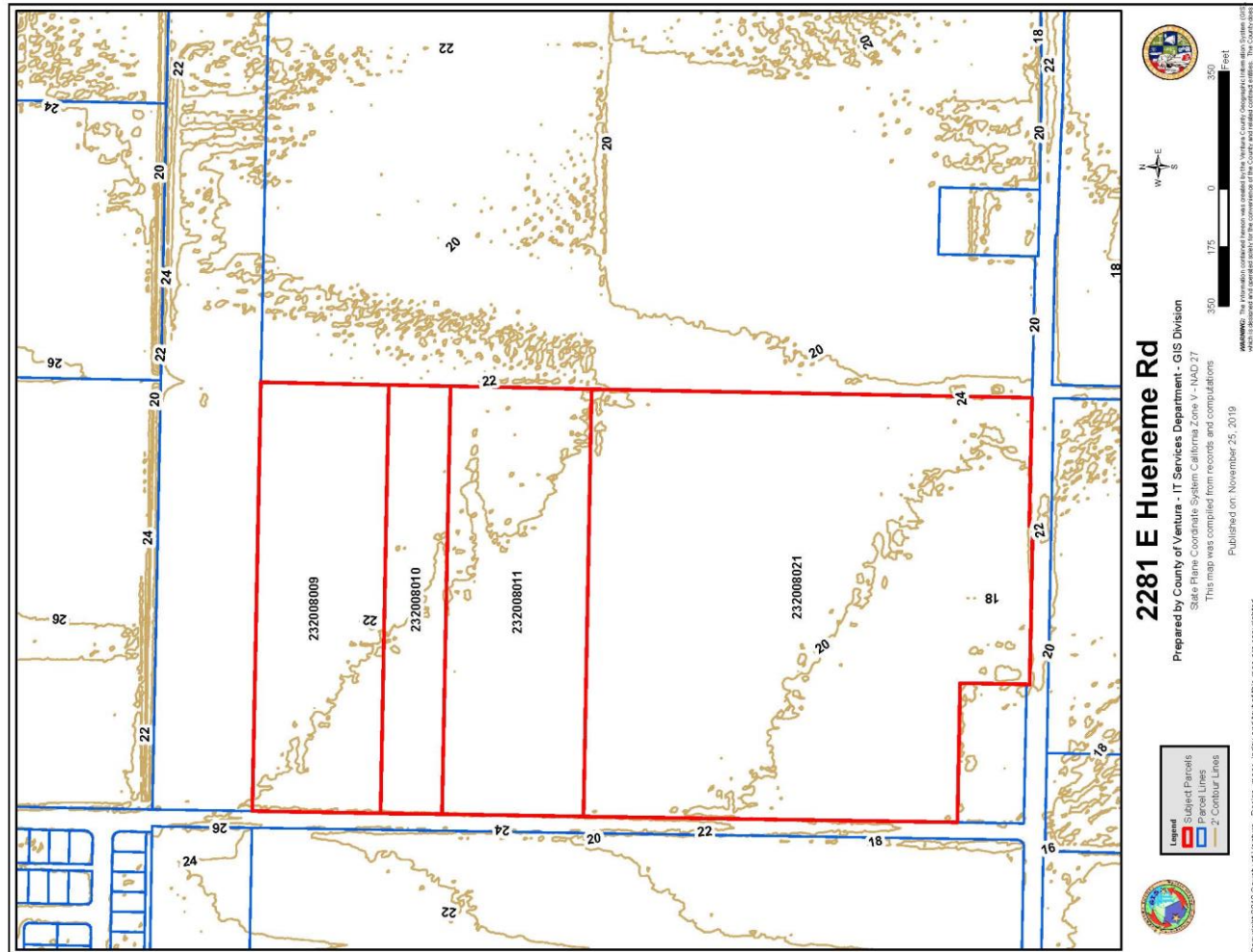
2281 E Hueneme Rd., Oxnard, CA - 66.066 +/- Acres in Ventura County on the Oxnard Plain

The information above has been obtained from sources believed to be reliable. While we do not doubt its accuracy, we have not verified it and make no guarantee, warranty or representation about it. It is your responsibility to independently confirm its accuracy and completeness. Any projections, opinions, assumptions or estimates used are for example only and do not represent the current or future performance of the property. The value of this transaction to you depends on tax and other factors which should be evaluated by your tax, financial and legal advisors. You and your advisors should conduct a careful, independent investigation of the property to determine to your satisfaction the suitability of the property for your needs.



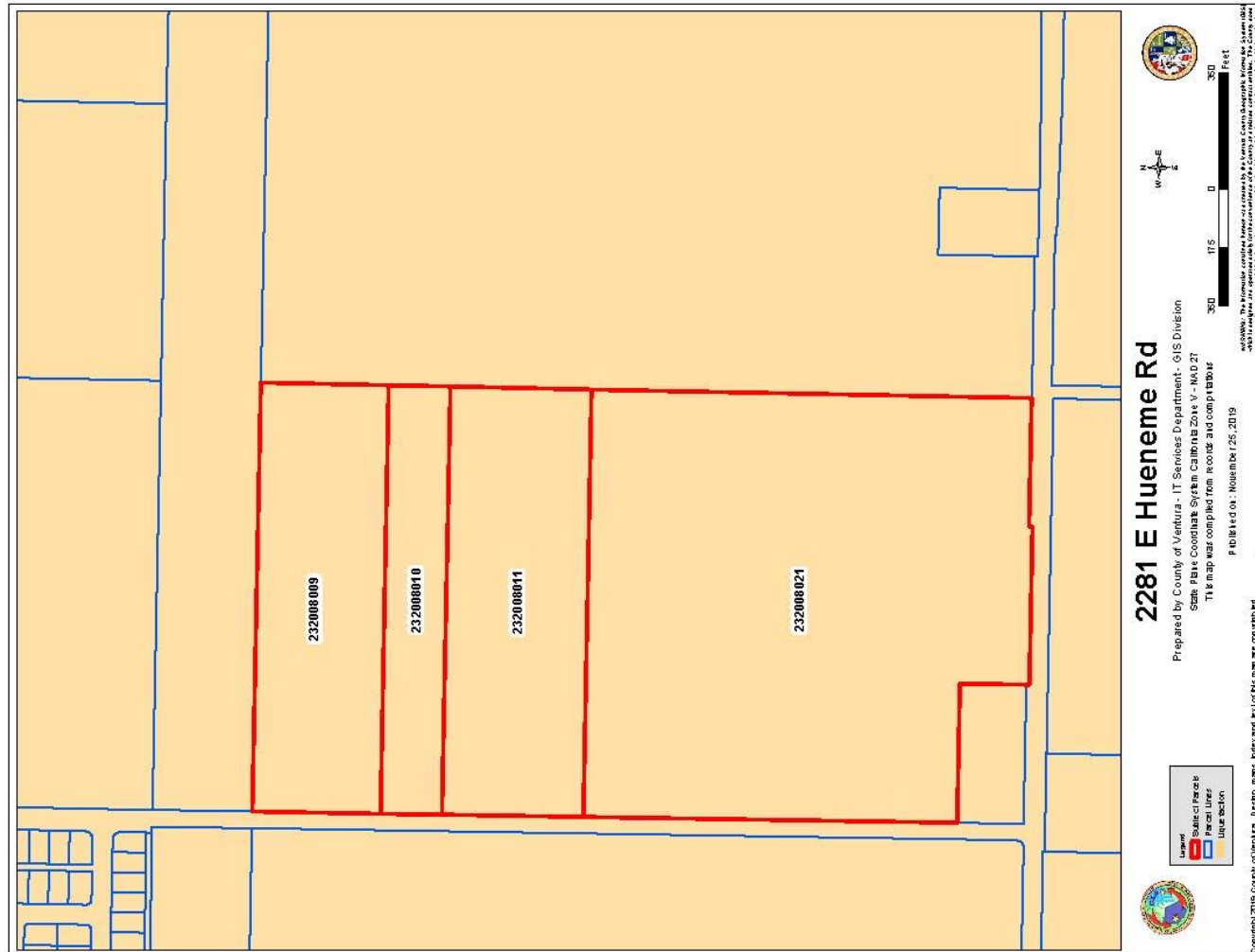
2281 E Hueneme Rd., Oxnard, CA - 66.066 +/- Acres in Ventura County on the Oxnard Plain

The information above has been obtained from sources believed to be reliable. While we do not doubt its accuracy, we have not verified it and make no guarantee, warranty or representation about it. It is your responsibility to independently confirm its accuracy and completeness. Any projections, opinions, assumptions or estimates used are for example only and do not represent the current or future performance of the property. The value of this transaction to you depends on tax and other factors which should be evaluated by your tax, financial and legal advisors. You and your advisors should conduct a careful, independent investigation of the property to determine to your satisfaction the suitability of the property for your needs.



2281 E Hueneme Rd., Oxnard, CA - 66.066 +/- Acres in Ventura County on the Oxnard Plain

The information above has been obtained from sources believed to be reliable. While we do not doubt its accuracy, we have not verified it and make no guarantee, warranty or representation about it. It is your responsibility to independently confirm its accuracy and completeness. Any projections, opinions, assumptions or estimates used are for example only and do not represent the current or future performance of the property. The value of this transaction to you depends on tax and other factors which should be evaluated by your tax, financial and legal advisors. You and your advisors should conduct a careful, independent investigation of the property to determine to your satisfaction the suitability of the property for your needs.



2281 E Hueneme Rd., Oxnard, CA - 66.066 +/- Acres in Ventura County on the Oxnard Plain

The information above has been obtained from sources believed to be reliable. While we do not doubt its accuracy, we have not verified it and make no guarantee, warranty or representation about it. It is your responsibility to independently confirm its accuracy and completeness. Any projections, opinions, assumptions or estimates used are for example only and do not represent the current or future performance of the property. The value of this transaction to you depends on tax and other factors which should be evaluated by your tax, financial and legal advisors. You and your advisors should conduct a careful, independent investigation of the property to determine to your satisfaction the suitability of the property for your needs.