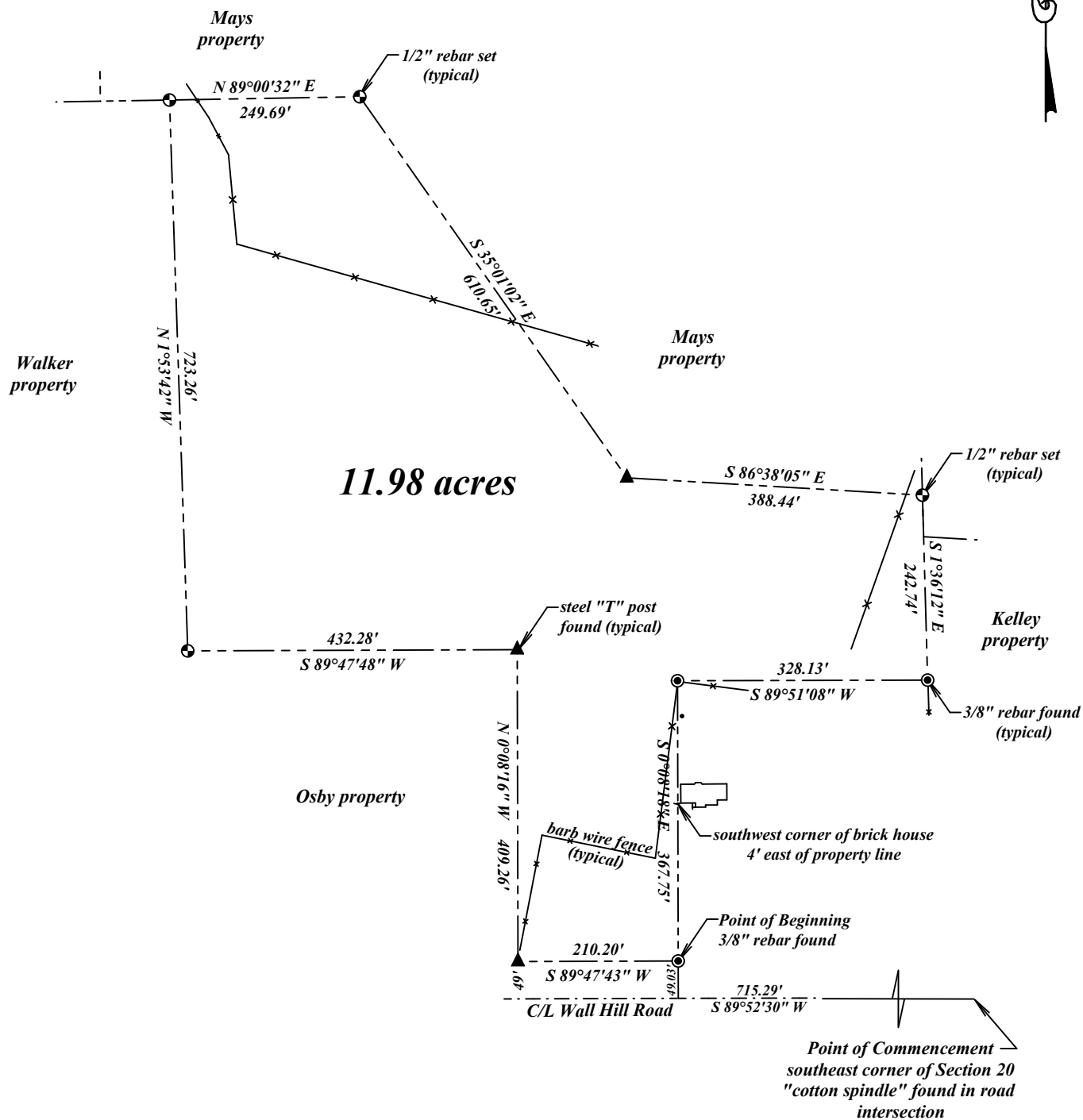


Part of the Southeast Quarter of Section 20, Township 4 South, Range 5 West, Tate County, Mississippi 11.97 acres



Commencing at the commonly accepted southeast corner of Section 20, Township 4 South, Range 5 West, Tate County, Mississippi being a cotton spindle found in Wall Hill Road; thence S 89°52'30" W along said road, a distance of 715.29 feet; thence N 0°08'18" W, a distance of 49.03 feet to a 3/8" rebar found in the north line of said road being the POINT OF BEGINNING; thence S 89°47'43" W along said north line, a distance of 210.20 feet to a steel "T" post found; thence N 0°08'16" W, a distance of 409.26 feet to a steel "T" post found; thence S 89°47'48" W, a distance of 432.28 feet; thence N 1°53'42" W, a distance of 723.26 feet; thence N 89°00'32" E, a distance of 249.69 feet; thence S 35°01'02" E, a distance of 610.65 feet to a steel "T" post found; thence S 86°38'05" E, a distance of 388.44 feet; thence S 1°36'12" E, a distance of 242.74 feet to a 3/8" rebar found; thence S 89°51'08" W, a distance of 328.13 feet to a 3/8" rebar found; thence S 0°08'18" E, a distance of 367.75 feet to the POINT OF BEGINNING; said described tract containing 11.97 Acres, more or less.

Hensley Land Surveying
2449 Arkabutla Road
Coldwater, MS 38618
662-562-5055

Scale 1" = 200'
Class "B" Survey, Sept. 14, 2020

- Notes:
1. This survey is subject to all easements and rights of way of record
 2. 1/2" rebar set on all corners unless otherwise noted
 3. Bearings are referenced to MS State Plane (MS West) GPS Grid

