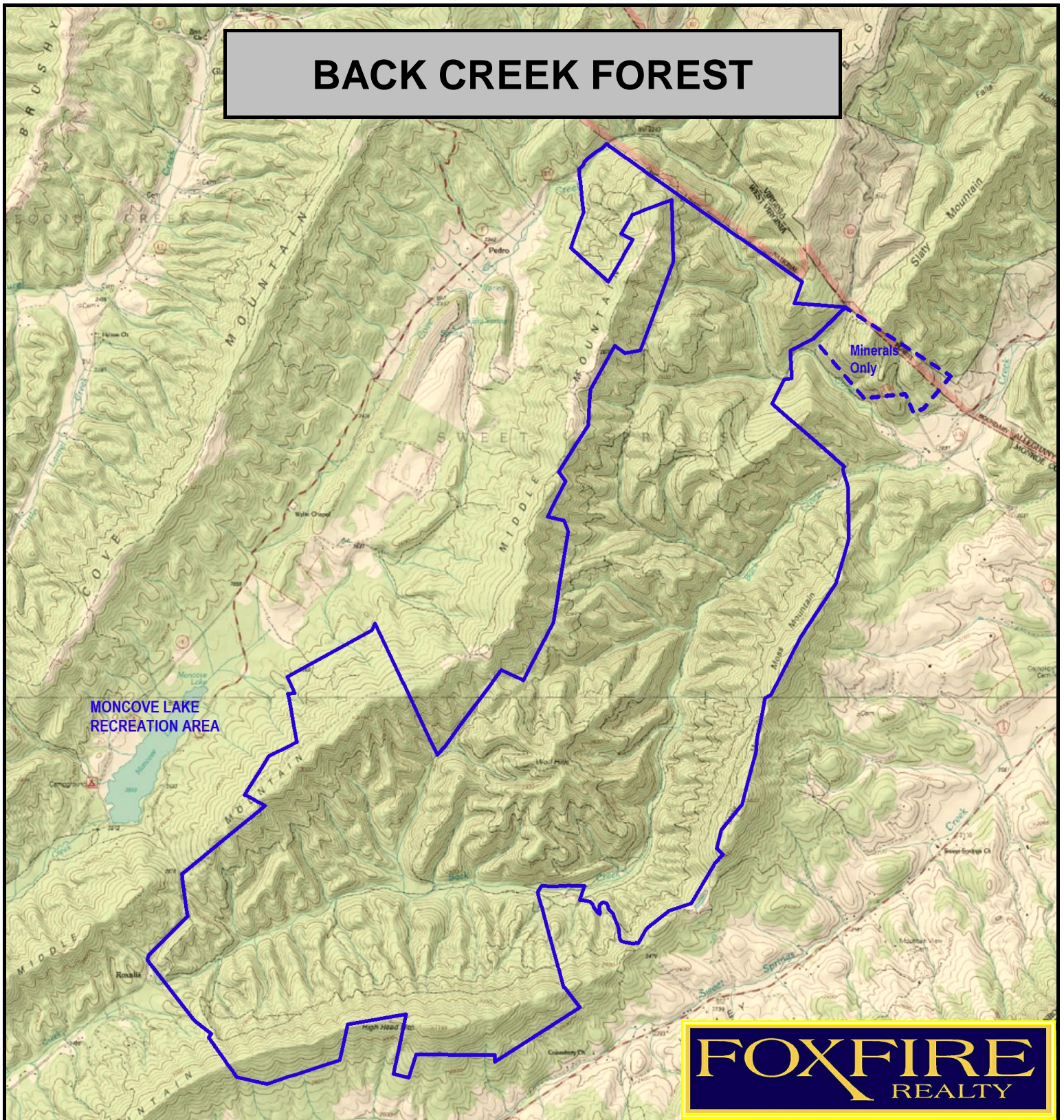


BACK CREEK FOREST



FOXFIRE
REALTY

BACK CREEK FOREST, Monroe County, WV
(topographic map)
Elevation Range: 1989' - 3355' +/- Google Coordinates:
LAT 37.669013 (N), LON -80.304324 (W)
This map is for general location purposes only. Consult a licensed land
surveyor for actual boundary location and acreage.

RICHARD GRIST, Broker - Auctioneer - Forester
304.646.8837 Richard@Foxfirenation.com
WWW.FOXFIRENATION.COM

FOR TOPO MAP

SCALE 1:48000

1 INCH = 4,000 FT.

