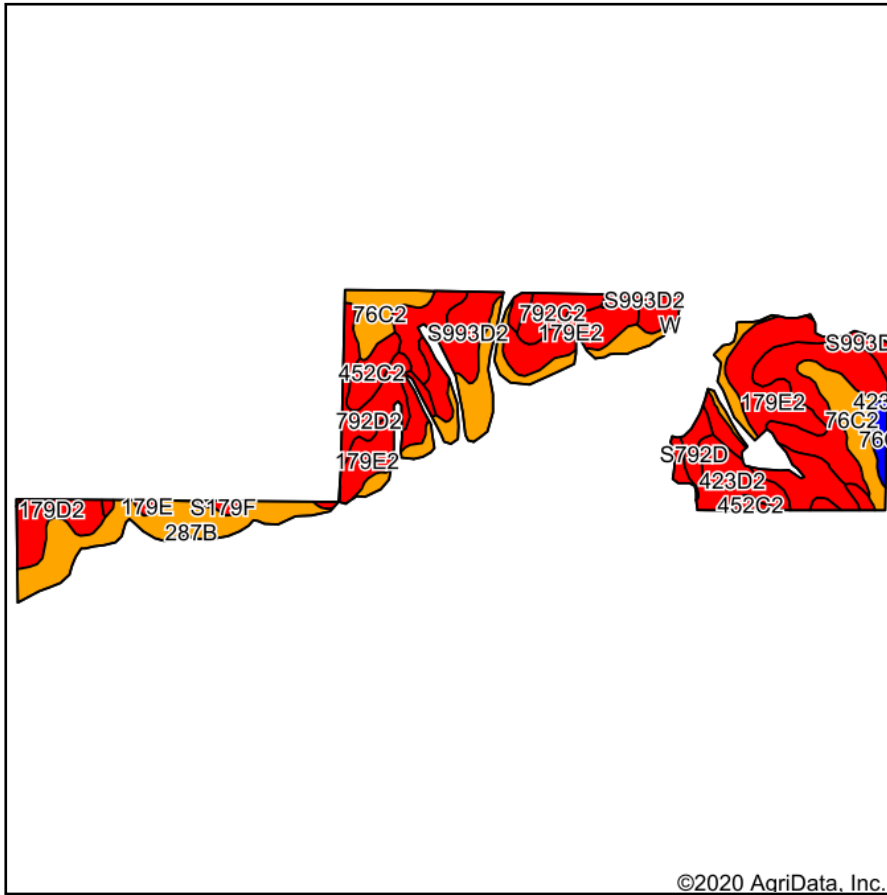
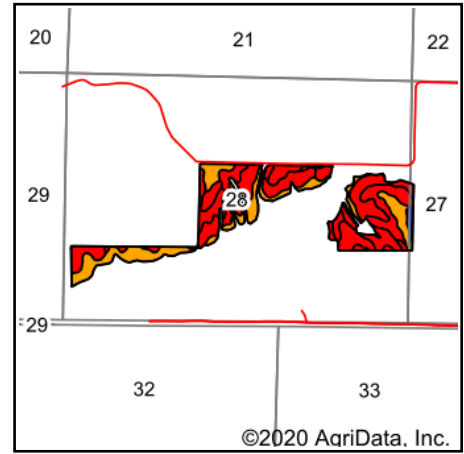


Soils Map



Soils data provided by USDA and NRCS.



State: **Iowa**
 County: **Ringgold**
 Location: **28-67N-31W**
 Township: **Clinton**
 Acres: **68.27**
 Date: **10/3/2020**



Maps Provided By:



Area Symbol: IA159. Soil Area Version: 26

Code	Soil Description	Acres	Percent of field	CSR2 Legend	Non-Irr Class *c	CSR2**	CSR	*n NCCPI Corn	*n NCCPI Soybeans
179E2	Gara loam, 14 to 18 percent slopes, moderately eroded	16.15	23.7%		Vle	24	33	64	45
287B	Zook-Ely silty clay loams, 0 to 5 percent slopes	14.08	20.6%		IIlw	75	60	69	72
423C2	Bucknell silty clay loam, 5 to 9 percent slopes, moderately eroded	6.71	9.8%		IIIle	34	29	67	49
76C2	Ladoga silty clay loam, 5 to 9 percent slopes, moderately eroded	5.89	8.6%		IIIle	73	62	85	70
S993D2	Gara-Armstrong complex, 9 to 14 percent slopes, moderately eroded	5.30	7.8%		IVe	32		66	46
792C2	Armstrong clay loam, 5 to 9 percent slopes, moderately eroded	4.29	6.3%		IIIle	24	27	61	42
179D2	Gara loam, 9 to 14 percent slopes, moderately eroded	3.92	5.7%		IVe	38	43	68	49
423D2	Bucknell silty clay loam, 9 to 14 percent slopes, moderately eroded	3.88	5.7%		IVe	6	13	61	43
792D2	Armstrong clay loam, 9 to 14 percent slopes, moderately eroded	3.36	4.9%		IVe	7	13	59	41
452C2	Lineville silt loam, 5 to 9 percent slopes, moderately eroded	1.97	2.9%		IIIle	46	31	72	53
S792D	Armstrong loam, 9 to 14 percent slopes	0.99	1.5%		IVe	10		69	51
76C	Ladoga silt loam, 5 to 9 percent slopes	0.89	1.3%		IIIle	81	67	90	85
S179F	Gara loam, 18 to 25 percent slopes	0.48	0.7%		Vle	19		57	42
179E	Gara loam, 14 to 18 percent slopes	0.36	0.5%		Vle	30	35	68	53
Weighted Average						40.5	*-	*n 67.5	*n 53.8

**IA has updated the CSR values for each county to CSR2.

*- CSR weighted average cannot be calculated on the current soils data, use prior data version for csr values.

*n: The aggregation method is "Weighted Average using all components"

*c: Using Capabilities Class Dominant Condition Aggregation Method

Soils data provided by USDA and NRCS.