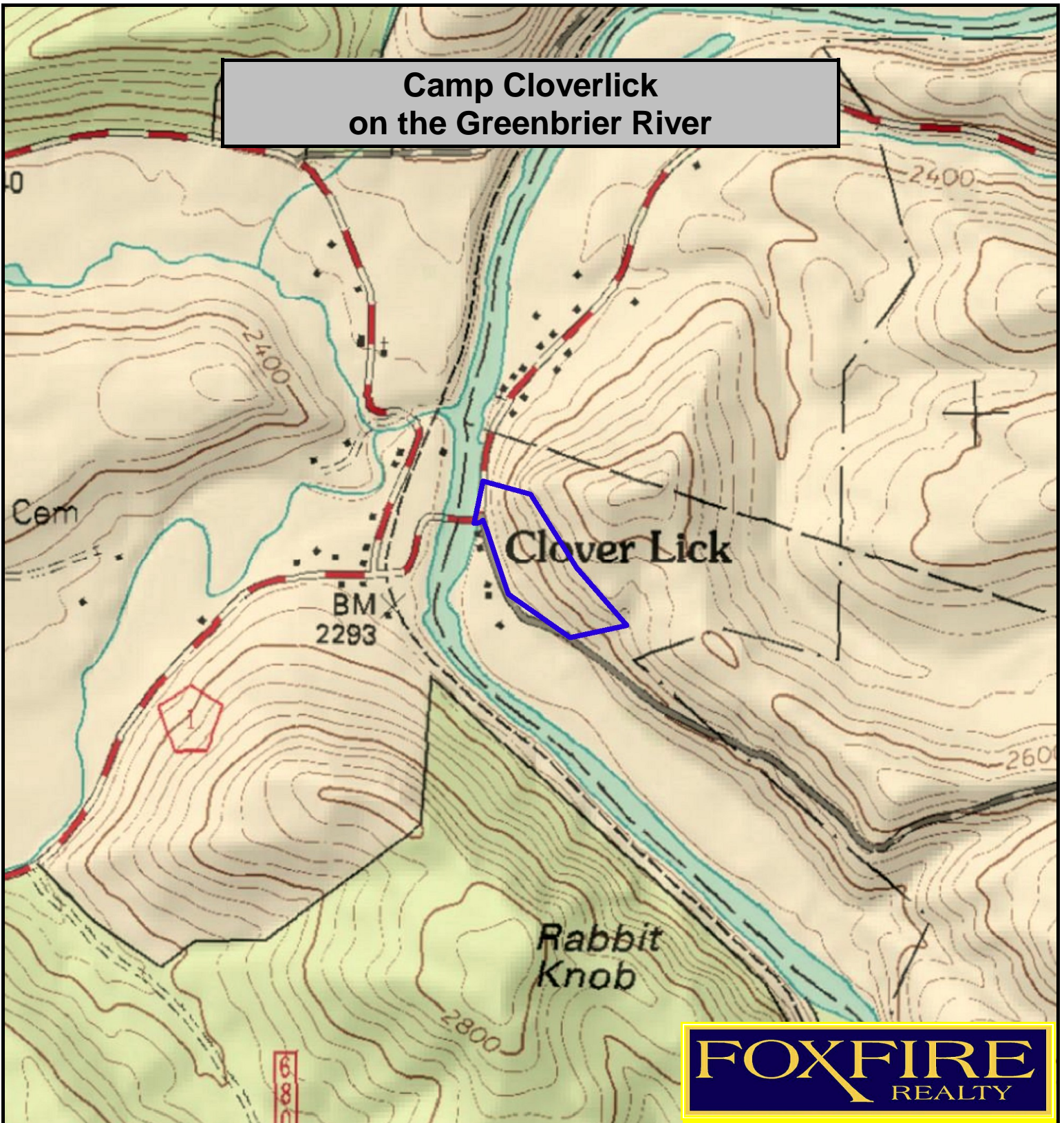


Camp Cloverlick on the Greenbrier River



FOXFIRE
REALTY

Camp Cloverlick on the Greenbrier River, Pocahontas County, WV
(topographic map)
Elevation Range: 2281' - 2484' +/-; Google Coordinates: LAT 38.331762
(N), LON -79.968535 (W)
This map is for general location purposes only. Consult a licensed land
surveyor for actual boundary location and acreage.

RICHARD GRIST, Broker - Auctioneer - Forester
304.646.8837 Richard@Foxfirenation.com
WWW.FOXFIRENATION.COM

FOR TOPO MAP

SCALE 1:9600

1 INCH = 800 FT.

