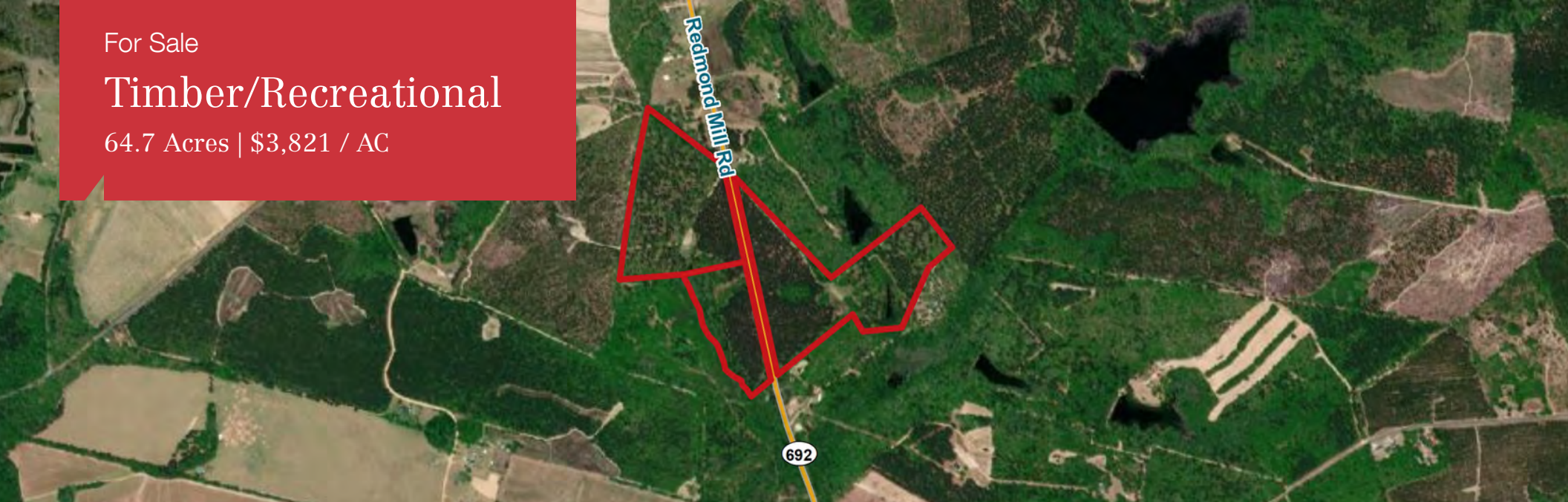


For Sale

Timber/Recreational

64.7 Acres | \$3,821 / AC



Redmond Mill Rd

Woodford, SC 29112

Property Highlights

- Good hunting tract for Deer, Dove, and Turkey or a great "buy and build" tract
- 1,900 +/- ft of Redmond Mill Road frontage on both sides
- 20 +/- Ac of mature Pines that were thinned in 2018
- 20 +/- Ac of mature Mixed Hardwoods
- Old pond site that can be reclaimed to make 2.0 +/- Ac pond
- Two (2) established food plots with one that could be quickly reclaimed
- Sales Options:
 - 24.52 Acs: \$96,844 or \$3,950 per acre
 - 10.29 Acs: \$42,703 or \$4,150 per acre
 - 29.50 Acs: \$107,675 or \$3,650 per acre
- Will consider other subdivisions above 10 acres

OFFERING SUMMARY

Sale Price	\$247,232
Lot Size	64.7 Acres



For more information

Tombo Milliken

O: 803 744 9852 | C: 803 206 8384
tombo.milliken@naicolumbia.com

Tom Milliken

O: 803 744 9837 | C: 803 331 6999
tmilliken@naicolumbia.com

Nelson Weston, III

O: 803 744 9804 | C: 803 678 7346
nweston@naicolumbia.com

Additional Photos



Additional Photos

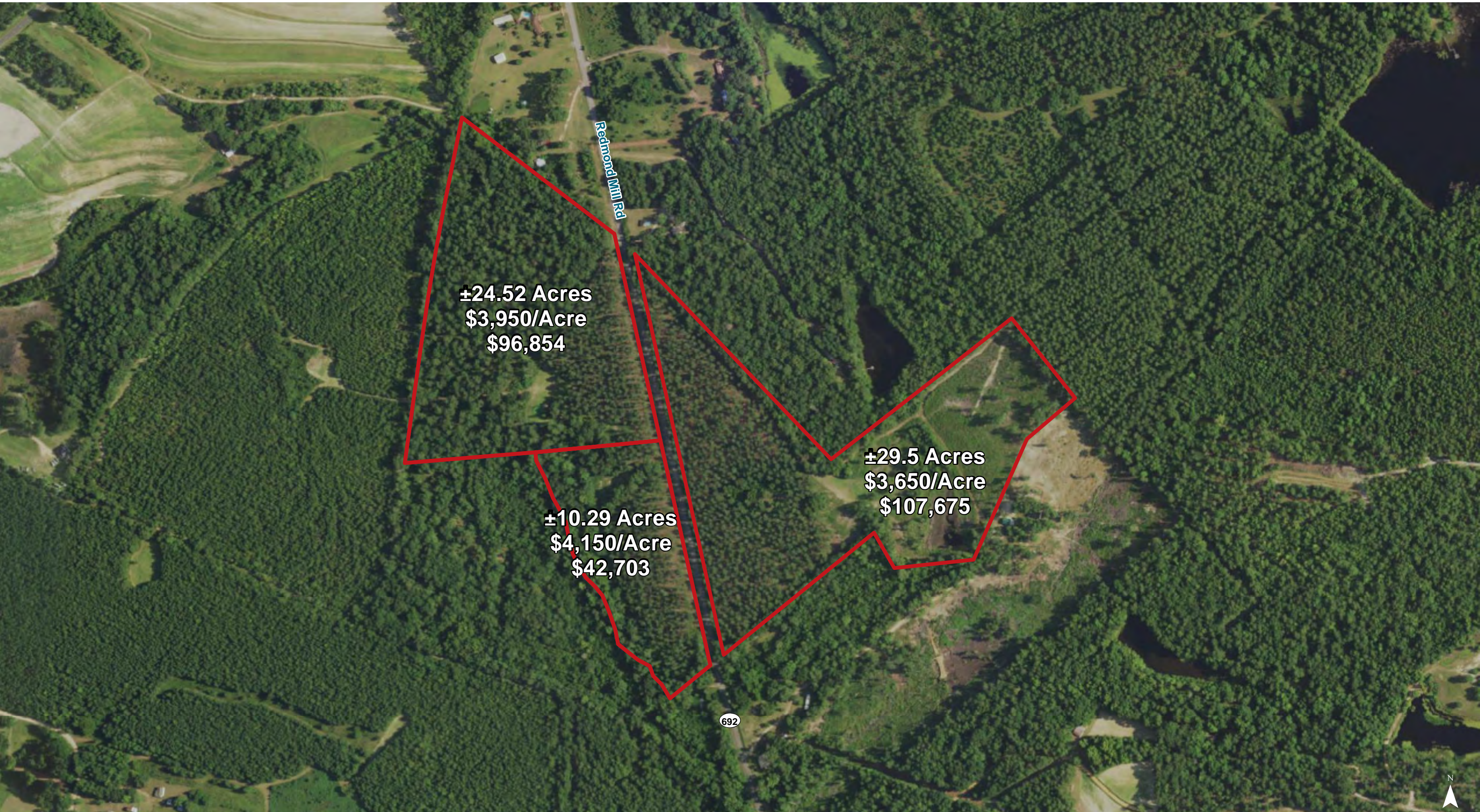


Additional Photos

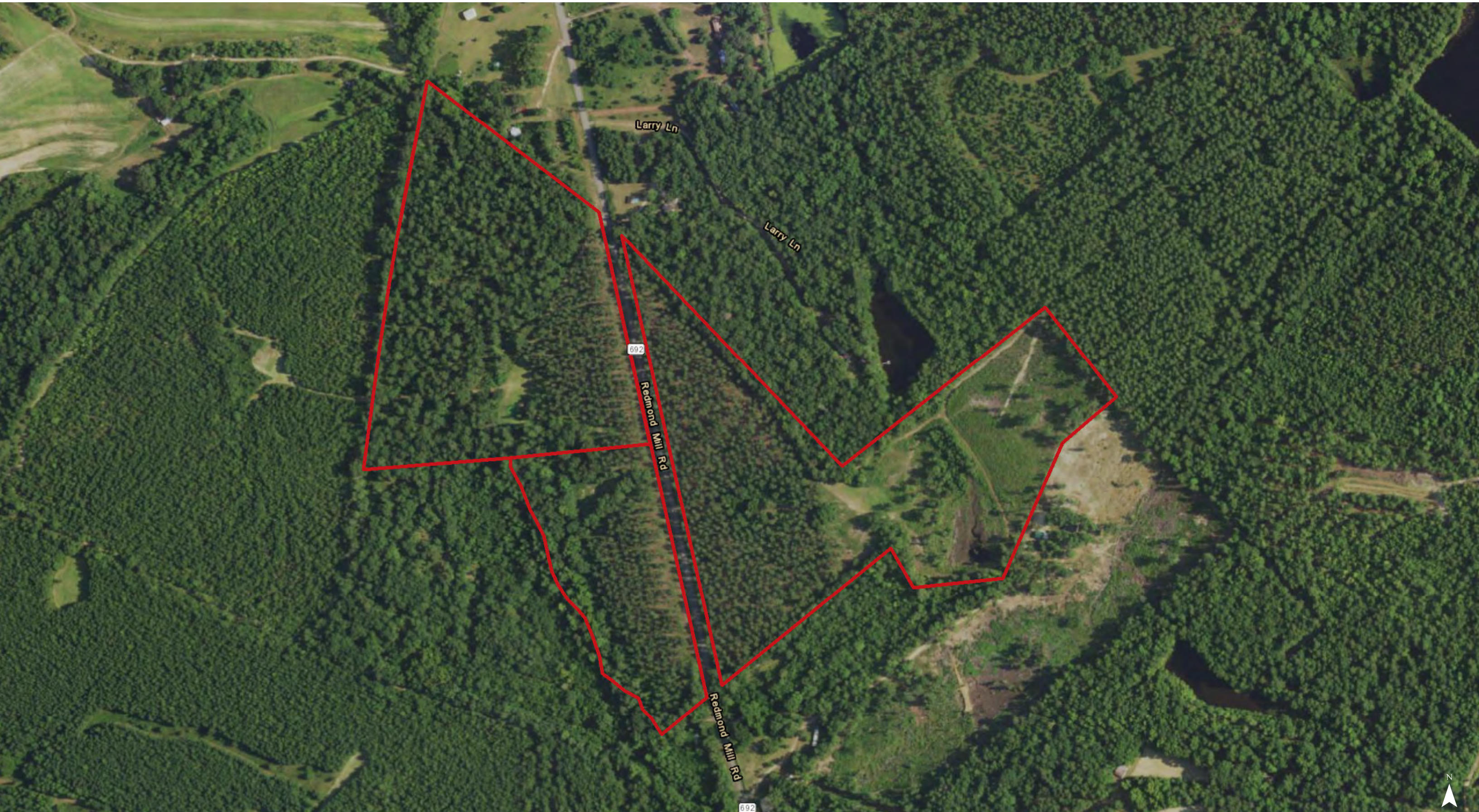




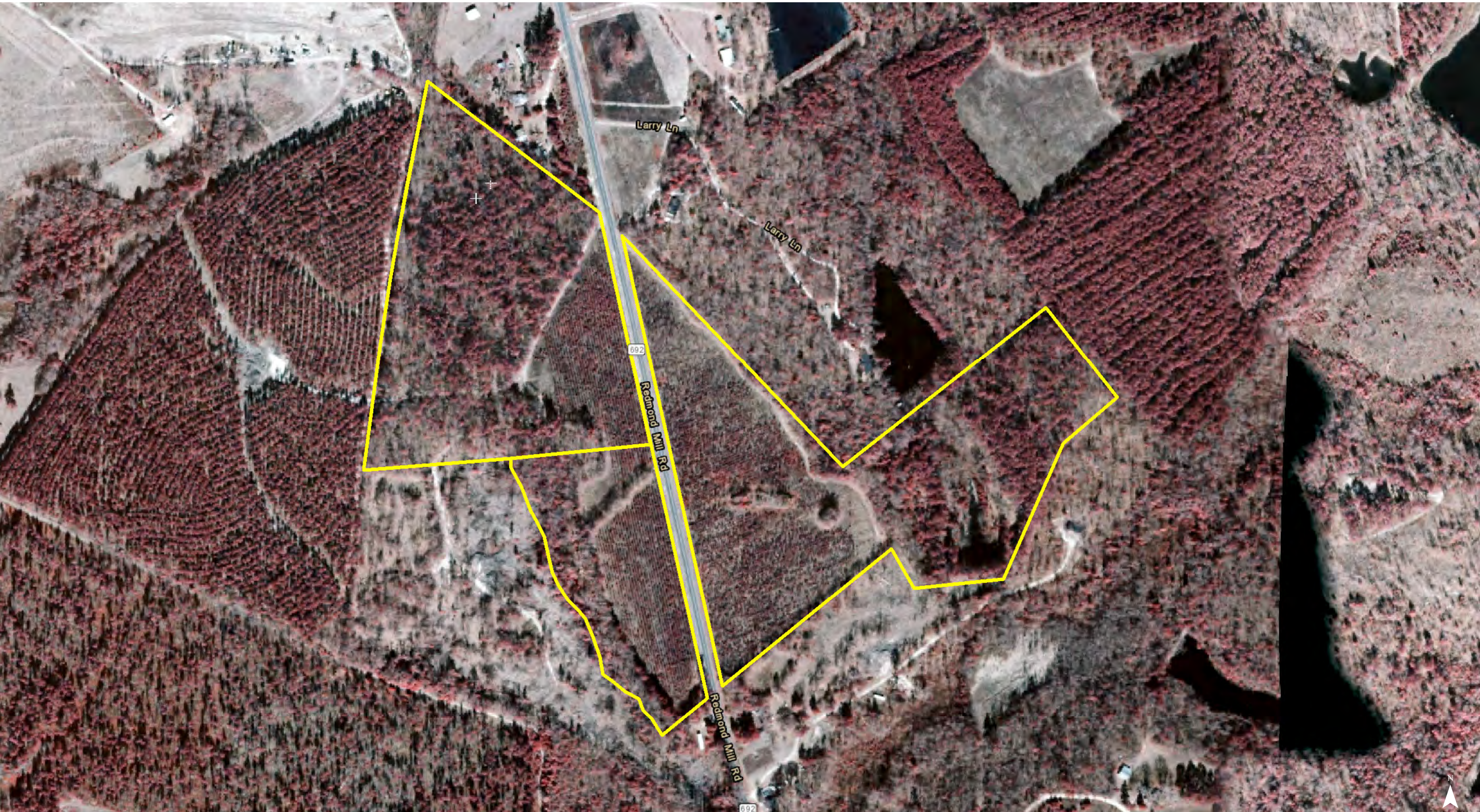
Map Updated: Tuesday, November 10, 2020. This information submitted is not guaranteed. Although obtained from reliable sources, all information should be confirmed prior to use or reliance upon the information. This document may not be reproduced in whole or in part without the express written consent of NAI Avant.



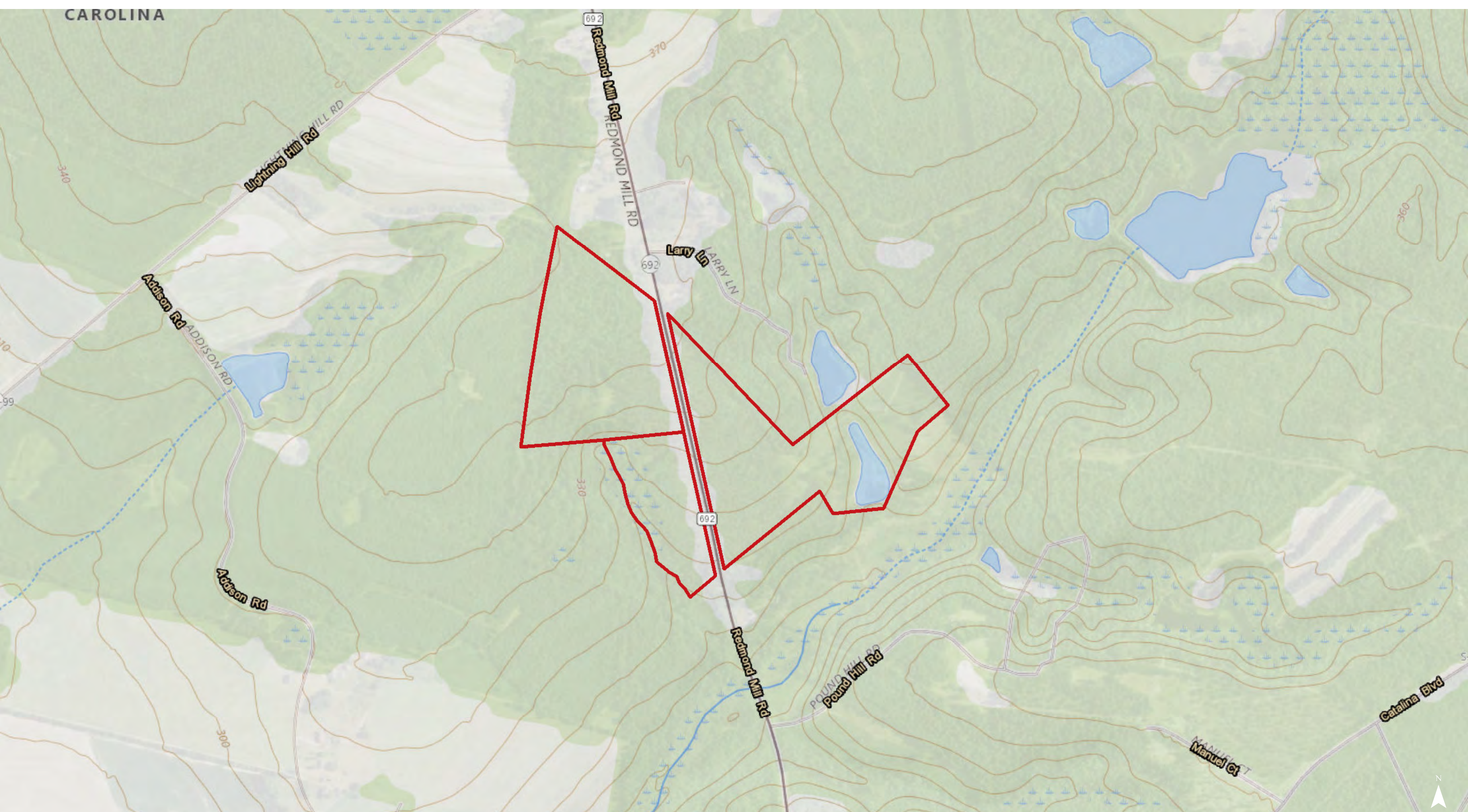
Map Updated: Thursday, October 22, 2020. This information submitted is not guaranteed. Although obtained from reliable sources, all information should be confirmed prior to use or reliance upon the information. This document may not be reproduced in whole or in part without the express written consent of NAI Avant.



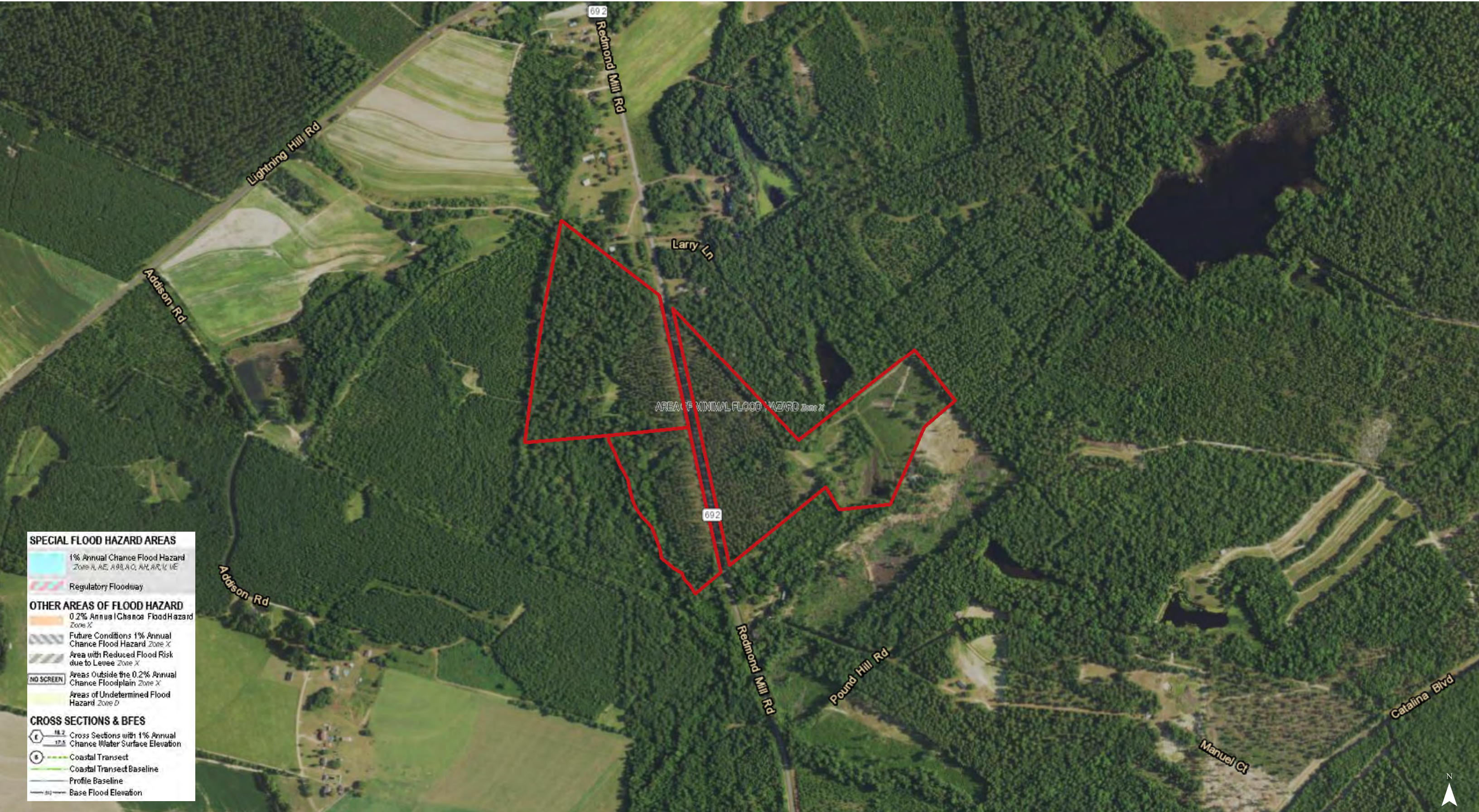
Map Updated: Tuesday, November 10, 2020. This information submitted is not guaranteed. Although obtained from reliable sources, all information should be confirmed prior to use or reliance upon the information. This document may not be reproduced in whole or in part without the express written consent of NAI Avant.



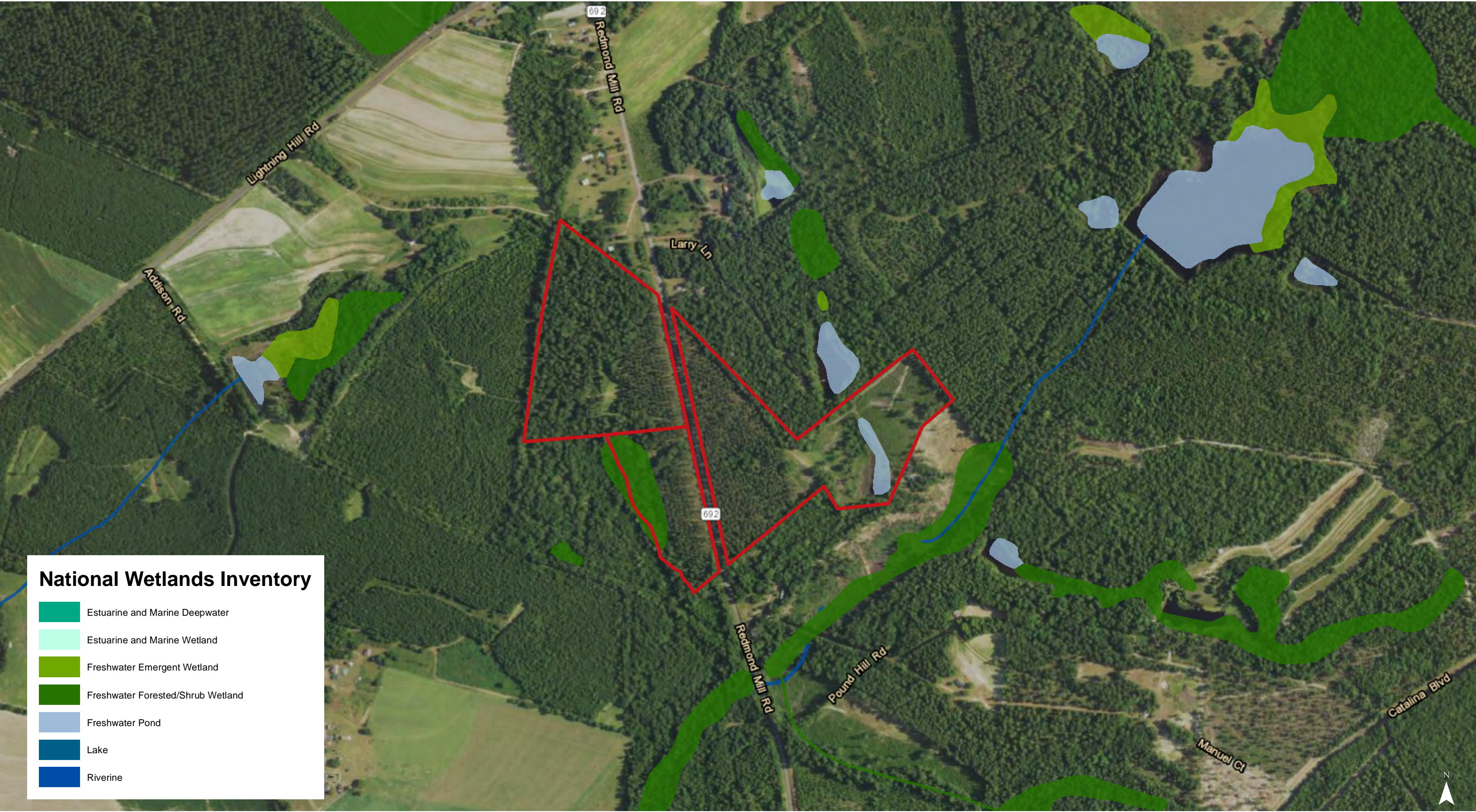
Map Updated: Tuesday, November 10, 2020. This information submitted is not guaranteed. Although obtained from reliable sources, all information should be confirmed prior to use or reliance upon the information. This document may not be reproduced in whole or in part without the express written consent of NAI Avant.



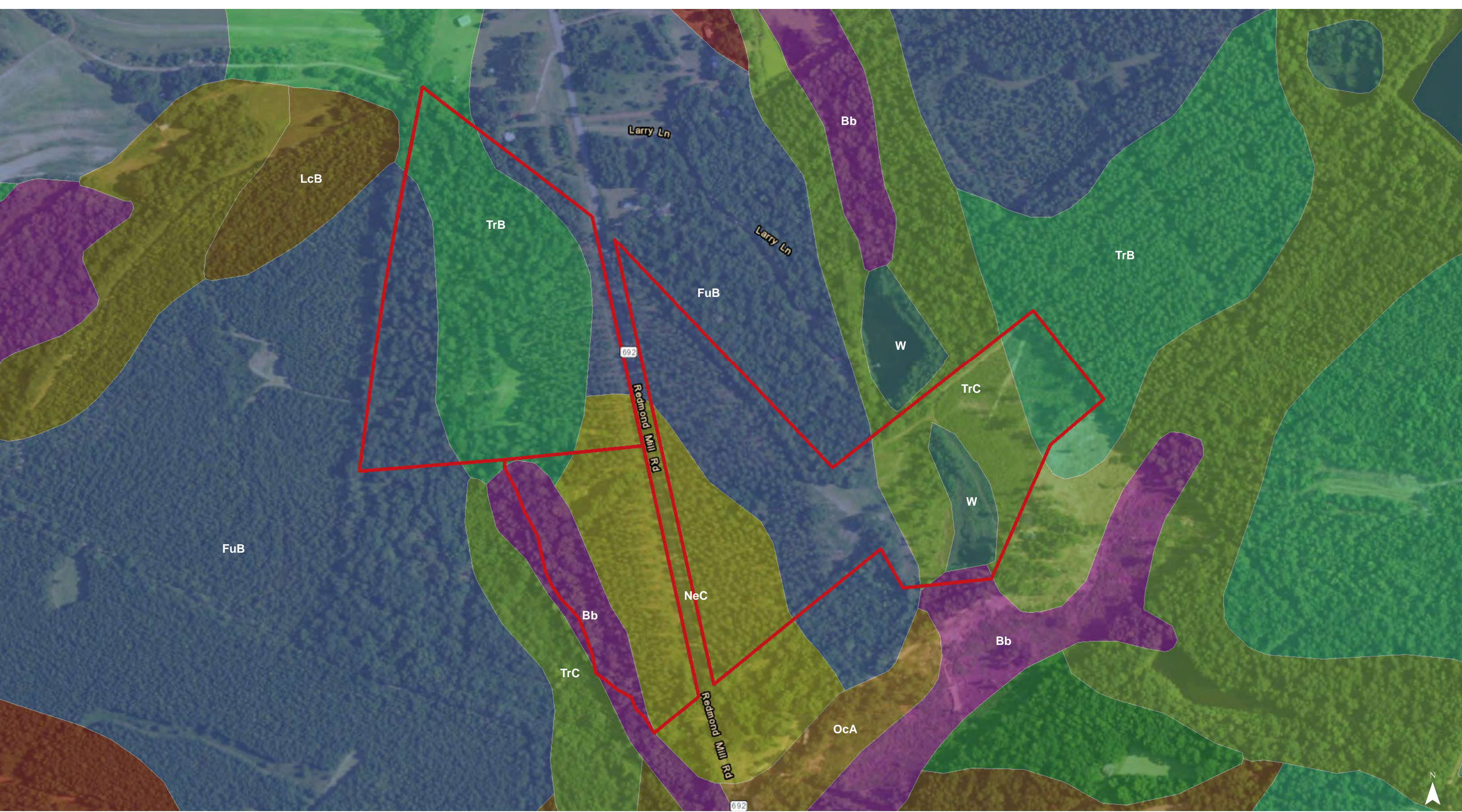
Map Updated: Tuesday, November 10, 2020. This information submitted is not guaranteed. Although obtained from reliable sources, all information should be confirmed prior to use or reliance upon the information. This document may not be reproduced in whole or in part without the express written consent of NAI Avant.



Map Updated: Tuesday, November 10, 2020. This information submitted is not guaranteed. Although obtained from reliable sources, all information should be confirmed prior to use or reliance upon the information. This document may not be reproduced in whole or in part without the express written consent of NAI Avant.



Map Updated: Tuesday, November 10, 2020. This information submitted is not guaranteed. Although obtained from reliable sources, all information should be confirmed prior to use or reliance upon the information. This document may not be reproduced in whole or in part without the express written consent of NAI Avant.



Map Updated: Tuesday, November 10, 2020. This information submitted is not guaranteed. Although obtained from reliable sources, all information should be confirmed prior to use or reliance upon the information. This document may not be reproduced in whole or in part without the express written consent of NAI Avant.

Map Unit Description (Brief, Generated)

Orangeburg County, South Carolina

[Minor map unit components are excluded from this report]

Map unit: Bb - Bibb sandy loam

Component: Bibb (90%)

The Bibb component makes up 90 percent of the map unit. Slopes are 0 to 2 percent. This component is on flood plains, coastal plains, marine terraces. The parent material consists of loamy alluvium. Depth to a root restrictive layer is greater than 60 inches. The natural drainage class is poorly drained. Water movement in the most restrictive layer is moderately high. Available water to a depth of 60 inches is moderate. Shrink-swell potential is low. This soil is frequently flooded. It is not ponded. A seasonal zone of water saturation is at 0 inches during January, February, March, April, May, December. Organic matter content in the surface horizon is about 1 percent. Nonirrigated land capability classification is 5w. This soil meets hydric criteria.

Map unit: FuB - Fuquay sand, 0 to 6 percent slopes

Component: Fuquay (100%)

The Fuquay component makes up 100 percent of the map unit. Slopes are 0 to 6 percent. This component is on marine terraces, coastal plains. The parent material consists of loamy marine deposits. Depth to a root restrictive layer is greater than 60 inches. The natural drainage class is well drained. Water movement in the most restrictive layer is moderately low. Available water to a depth of 60 inches is moderate. Shrink-swell potential is low. This soil is not flooded. It is not ponded. A seasonal zone of water saturation is at 48 inches during January, February, March. Organic matter content in the surface horizon is about 1 percent. Nonirrigated land capability classification is 2s. This soil does not meet hydric criteria.

Map unit: LcB - Lucy loamy sand, 0 to 6 percent slopes

Component: Lucy (100%)

The Lucy component makes up 100 percent of the map unit. Slopes are 0 to 6 percent. This component is on marine terraces, coastal plains. The parent material consists of loamy marine deposits. Depth to a root restrictive layer is greater than 60 inches. The natural drainage class is well drained. Water movement in the most restrictive layer is moderately high. Available water to a depth of 60 inches is moderate. Shrink-swell potential is low. This soil is not flooded. It is not ponded. There is no zone of water saturation within a depth of 72 inches. Organic matter content in the surface horizon is about 1 percent. Nonirrigated land capability classification is 2s. This soil does not meet hydric criteria.

Map unit: NeC - Neeses loamy sand, 6 to 10 percent slopes

Component: Neeses (100%)

The Neeses component makes up 100 percent of the map unit. Slopes are 6 to 10 percent. This component is on coastal plains, marine terraces. The parent material consists of clayey marine deposits. Depth to a root restrictive layer is greater than 60 inches. The natural drainage class is well drained. Water movement in the most restrictive layer is low. Available water to a depth of 60 inches is moderate. Shrink-swell potential is low. This soil is not flooded. It is not ponded. There is no zone of water saturation within a depth of 72 inches. Organic matter content in the surface horizon is about 1 percent. Nonirrigated land capability classification is 4e. This soil does not meet hydric criteria.

Orangeburg County, South Carolina

[Minor map unit components are excluded from this report]

Map unit: TrB - Troup sand, 0 to 6 percent slopes

Component: Troup (90%)

The Troup component makes up 90 percent of the map unit. Slopes are 0 to 6 percent. This component is on coastal plains, marine terraces, sandhills. The parent material consists of sandy and/or loamy marine deposits. Depth to a root restrictive layer is greater than 60 inches. The natural drainage class is somewhat excessively drained. Water movement in the most restrictive layer is moderately high. Available water to a depth of 60 inches is low. Shrink-swell potential is low. This soil is not flooded. It is not ponded. There is no zone of water saturation within a depth of 72 inches. Organic matter content in the surface horizon is about 1 percent. Nonirrigated land capability classification is 3s. This soil does not meet hydric criteria.

Map unit: TrC - Troup sand, 6 to 10 percent slopes

Component: Troup (100%)

The Troup component makes up 100 percent of the map unit. Slopes are 6 to 10 percent. This component is on sandhills, coastal plains, marine terraces. The parent material consists of sandy and/or loamy marine deposits. Depth to a root restrictive layer is greater than 60 inches. The natural drainage class is somewhat excessively drained. Water movement in the most restrictive layer is moderately high. Available water to a depth of 60 inches is low. Shrink-swell potential is low. This soil is not flooded. It is not ponded. There is no zone of water saturation within a depth of 72 inches. Organic matter content in the surface horizon is about 1 percent. Nonirrigated land capability classification is 6s. This soil does not meet hydric criteria.

Map unit: W - Water

Component: Water (100%)

Generated brief soil descriptions are created for major soil components. The Water is a miscellaneous area.