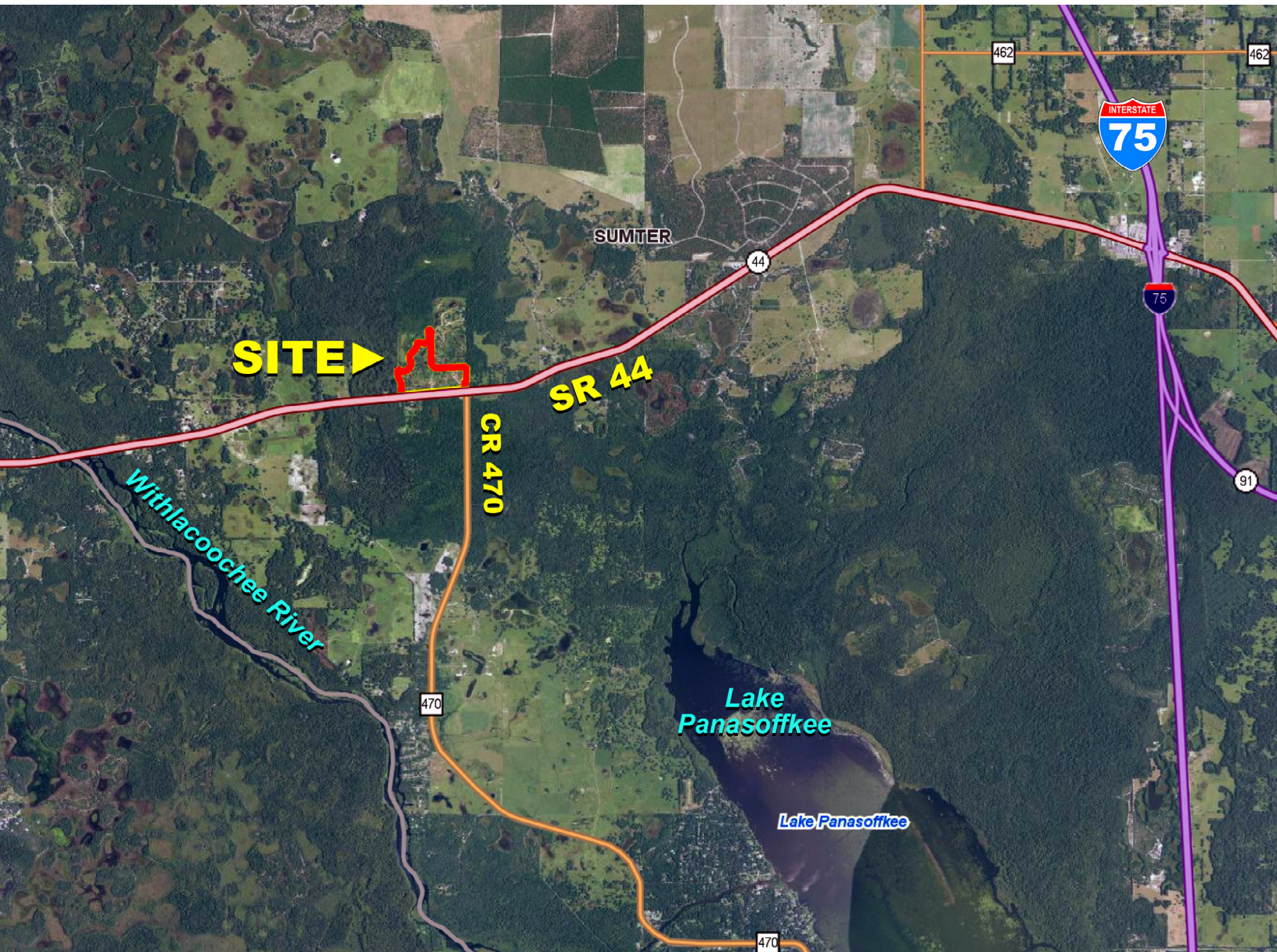


SUMTER COUNTY AG & COMMERCIAL

LAKE PANASOFFKEE, FL | SUMTER COUNTY

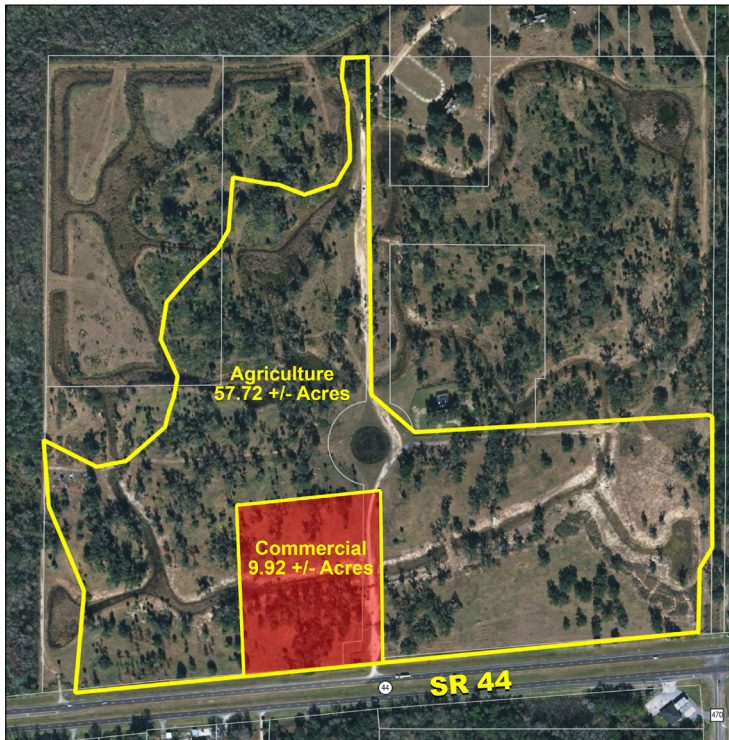
67.64 ± ACRES TOTAL



Visit SVNsaunders.com & search for: **Sumter County Ag**

Clay Taylor, ALC
863.774.3532 • Clay@SREland.com

David Hitchcock, ALC, CCIM
863.272.7155 • DavidH@SREland.com



This property is located on the north side of SR 44, west of CR 470 between Wildwood and Inverness. It is in unincorporated Sumter County and near the Withlacoochee River and Lake Panasoffkee. The property is partially cleared with scattered Live Oak trees, Cabbage Palms and is ideal for hunting, ATVs, horses, and cattle.

Acreage: 67.64 ± acres

Sale Price: \$899,999 *Price Reduced*

County: Sumter

Site Address: 4064 W SR 44, Lake Panasoffkee, FL 33538

Road Frontage: 2,573 ± FT paved road frontage on SR 44

Soil Types: Paisley and Mabel Fine Sands

Land Cover: Partially cleared with scattered Live Oak trees and Cabbage Palms

Uplands/Wetlands: 92% uplands

Zoning/FLU:

- Agriculture 57.72 ± acres
- Commercial 9.92 ± acres allows general commercial development and activities with approval from Sumter County

Potential Uses: Hunting, ATVs, horses, cattle

Parcel ID: SWF Parcel No. 19193114S

GPS: 28.859113, -82.174534

Driving Directions:

- From Interstate 75, take exit 329 and go west on SR 44 towards Inverness
- Go about 5.5 miles and the property is on the north side of SR 44

57.72 ± Acres Agriculture
9.92 ± Acres Commercial

Ideal for Hunting, ATVs, Horses, Cattle!

**Near Withlacoochee River
and Lake Panasoffkee**

SREland.com/AgComm

LAKELAND OFFICE:
114 N. Tennessee Ave. 3rd Floor
Lakeland, FL 33801
863.648.1528 - Main Office

LAKE CITY OFFICE:
356 NW Lake City Avenue
Lake City, FL 32055
386.438.5896



©2019 SVN | Saunders Ralston Dantzler Real Estate. All SVN® Offices Independently Owned and Operated. Saunders Ralston Dantzler Real Estate is regarded as an authority on all types of Florida land and conservation easements, transacting over \$2.5 billion in sales since 1996. Offering land, forestry, and conservation easement real estate services through Saunders Ralston Dantzler Real Estate and the Saunders Real Estate Forestry Group, the Saunders team of land professionals offers advisory and transactional services through their home office in Lakeland, FL, the North Florida office in Lake City, FL, and the South Georgia office in Thomasville, GA. We provide services to land and commercial clients through our commercial real estate brokerage, Saunders Ralston Dantzler Real Estate.

072817-A_ER