



# SKYWAY RESORT DEVELOPMENT

TERRA CEIA, FL | MANATEE COUNTY

991.25 ± ACRES TOTAL

[SREland.com/Skyway](http://SREland.com/Skyway)

Dean Saunders, ALC, CCIM 863.774.3522, Gary Ralston, CCIM, SIOR 863.877.2828  
and David Hungerford 863.272.7156



# TABLE OF CONTENTS

Specifications and Features ..... 3

Regional Location Map..... 4

Location Map ..... 5

Demographics Map ..... 6

Demographic Highlights ..... 7-8

Density Information..... 10

Density Map..... 11

Area Amenities ..... 12-15

Resort Development Concept ..... 17

Commercial Village Development Concept ..... 18

Cruise Ship Terminal Development Concept..... 19

Land Use Details ..... 20

Agent Information ..... 23

Contact Information ..... 24





## SPECIFICATIONS & FEATURES

**Acreage:** 991.25 ± acres

**Sale Price:** \$14,700,000

**Price per Acre:** \$14,830

**County:** Manatee

**Site Address:** 7901 US Hwy 19, Terra Ceia, FL 34250

**County:** Manatee

**Uplands/Wetlands:** 67 ± acres of uplands and right to dredge and fill up to another 340 ± acres

**Utilities:** Public water and sewer, with capacity, are located at Sunshine Skyway Fishing Pier

**Water Frontage:** 3 ± miles fronting Tampa Bay

**Road Frontage:** 1,900 ± FT on I-275

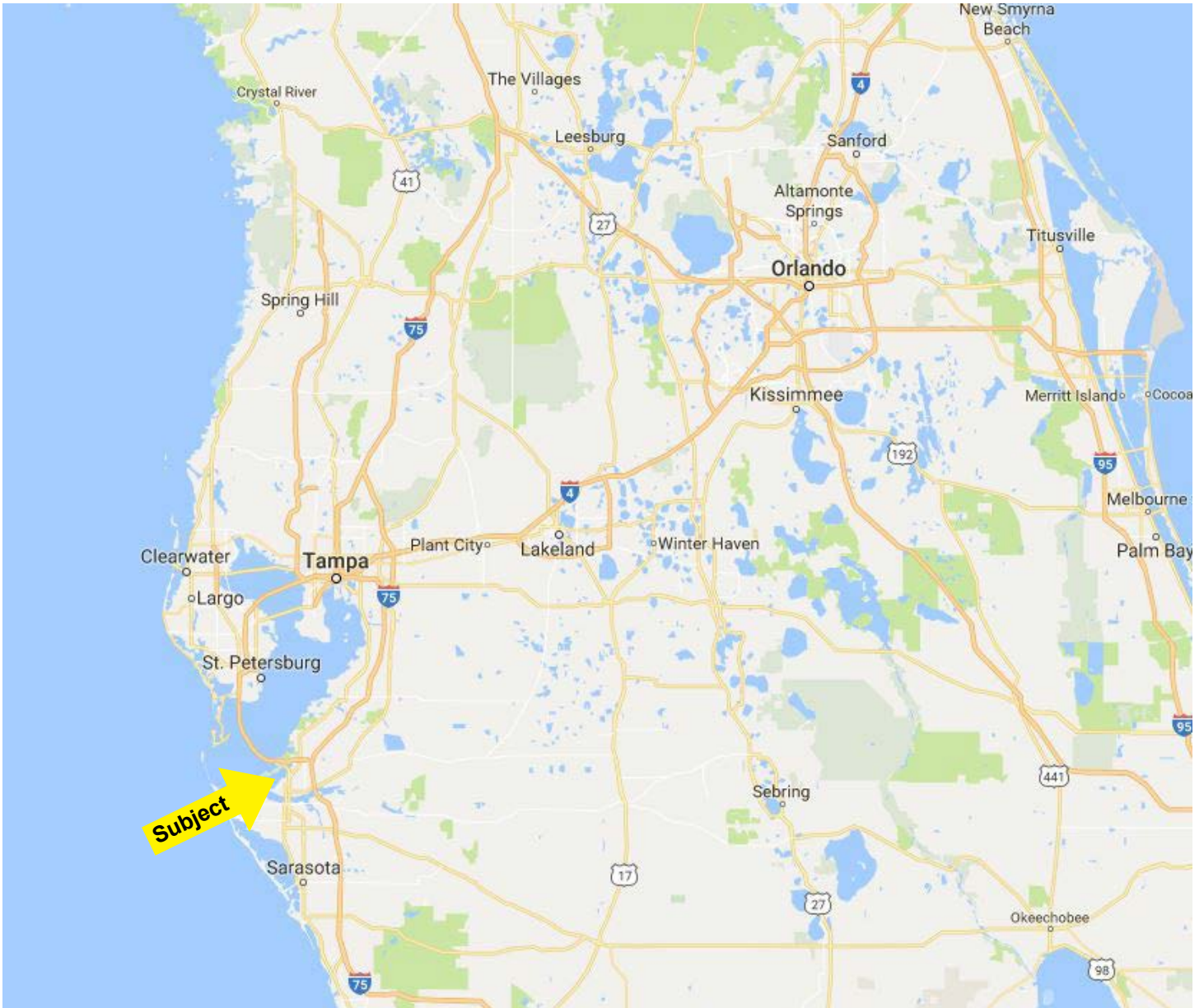
**Currently Zoning:** Allows 106 residential units and up to 150,000 SF of commercial

**Taxes:** \$28,034.82 (2016)

Skyway Resort Development features 991.25 +/- acres of Florida beauty from flat, clear, sandy beaches to shaded mangrove tangles. The site offers 10 miles of undeveloped shoreline. This environmentally-sensitive property includes submerged lands and uplands with the right to bulkhead, fill, and dredge. Several site plans have been created to present a variety of development options including a resort, a shopping village, or a cruise ship terminal.

# Endless development possibilities!

Resort, shopping village,  
cruise ship terminal and more!



## SKYWAY RESORT DEVELOPMENT Regional Location Map

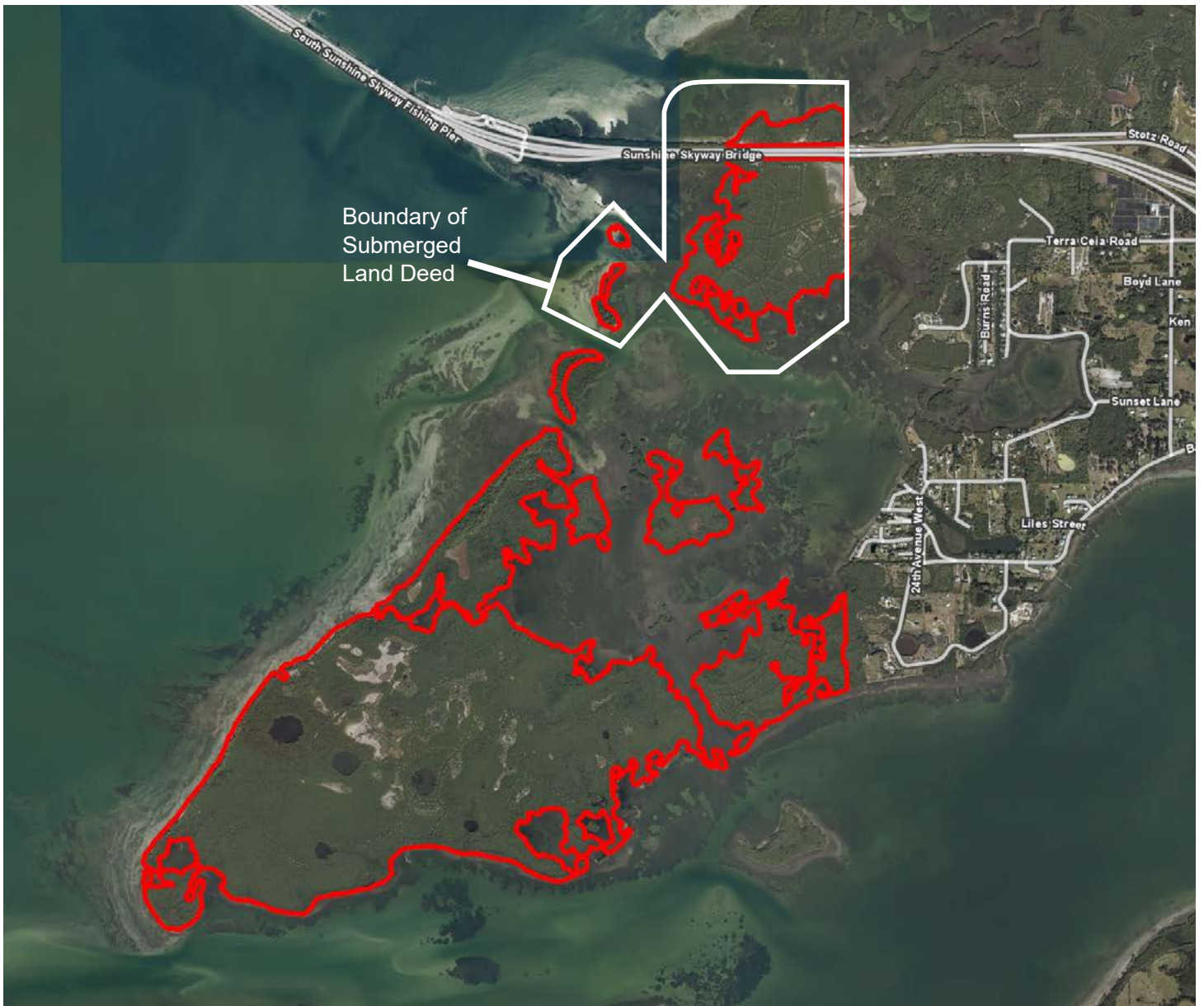
**Parcel IDs:** 2140500006, 2140200109, 2141200002

**GPS:** 27.583113, -82.601283

**Driving Directions:**

- Future access for the property will be located at the currently existing interchange at the southern end of the Sunshine Skyway Bridge.
- The Sunshine Skyway bridge is part of the I-275 system and the interchange for the property is located approximately 4.5 miles west of the interchange with US Hwy 41 (Tamiami Trail).
- **Showing Instructions:** Call listing agent to make an appointment.





SKYWAY RESORT DEVELOPMENT  
Location Map

## SKYWAY RESORT DEVELOPMENT Demographic Map



## SKYWAY RESORT DEVELOPMENT Demographic Highlights

Benchmark Demographics	Tampa MSA	Sarasota MSA	FL	US
Population	3,045,329	791,465	20,619,313	327,514,334
Households	1,242,566	348,558	8,064,657	123,158,887
Families	767,513	216,928	5,223,357	81,106,685
Average Household Size	2.41	2.24	2.50	2.59
Owner Occupied Housing Units	776,784	241,301	5,071,790	77,207,043
Renter Occupied Housing Units	465,782	107,257	2,992,867	45,951,844
Median Age	42.7	52.1	42.2	38.2
Trends: 2015 - 2020 Annual Rate	Tampa MSA	Sarasota MSA	FL	US
Population	1.31%	1.84%	1.36%	0.83%
Households	1.19%	1.78%	1.30%	0.79%
Families	1.14%	1.72%	1.25%	0.71%
Owner HHs	1.05%	1.68%	1.19%	0.72%
Median Household Income	2.10%	2.26%	2.13%	2.12%
Households by Income	Tampa MSA	Sarasota MSA	FL	US
<\$15,000	11.70%	10.20%	12.00%	11.50%
\$15,000 - \$24,999	12.10%	11.30%	11.70%	10.00%
\$25,000 - \$34,999	11.20%	11.10%	11.10%	9.70%
\$35,000 - \$49,999	14.90%	14.90%	14.60%	13.10%
\$50,000 - \$74,999	18.90%	19.20%	18.70%	17.80%
\$75,000 - \$99,999	11.60%	12.00%	11.70%	12.40%
\$100,000 - \$149,999	11.30%	11.90%	11.50%	13.90%
\$150,000 - \$199,999	4.10%	4.40%	4.30%	5.70%
\$200,000+	4.30%	5.00%	4.60%	6.10%
Median Household Income	\$50,147	\$52,211	\$50,606	\$56,124
Average Household Income	\$71,015	\$75,756	\$72,632	\$80,675
Per Capita Income	\$29,464	\$33,800	\$28,921	\$30,820



## SKYWAY RESORT DEVELOPMENT Demographic Highlights

Population by Age	Tampa MSA	Sarasota MSA	FL	US
0 - 4	5.30%	4.30%	5.30%	6.10%
5 - 9	5.40%	4.50%	5.50%	6.30%
10 - 14	5.60%	4.70%	5.60%	6.30%
15 - 19	5.60%	4.60%	5.70%	6.40%
20 - 24	6.20%	4.70%	6.40%	7.00%
25 - 34	12.70%	9.60%	13.10%	13.80%
35 - 44	11.90%	9.40%	11.80%	12.50%
45 - 54	13.30%	11.80%	13.00%	13.00%
55 - 64	13.80%	15.10%	13.50%	12.90%
65 - 74	11.20%	16.20%	11.30%	9.20%
75 - 84	6.10%	10.20%	6.20%	4.40%
85+	2.80%	4.80%	2.70%	2.00%
Race and Ethnicity	Tampa MSA	Sarasota MSA	FL	US
White Alone	76.40%	84.80%	73.10%	70.20%
Black Alone	12.50%	6.80%	16.40%	12.80%
American Indian Alone	0.40%	0.30%	0.40%	1.00%
Asian Alone	3.50%	1.90%	2.80%	5.60%
Pacific Islander Alone	0.10%	0.10%	0.10%	0.20%
Some Other Race Alone	4.00%	4.10%	4.20%	6.80%
Two or More Races	3.10%	2.20%	3.00%	3.40%
Hispanic Origin (Any Race)	19.20%	12.90%	25.50%	18.10%

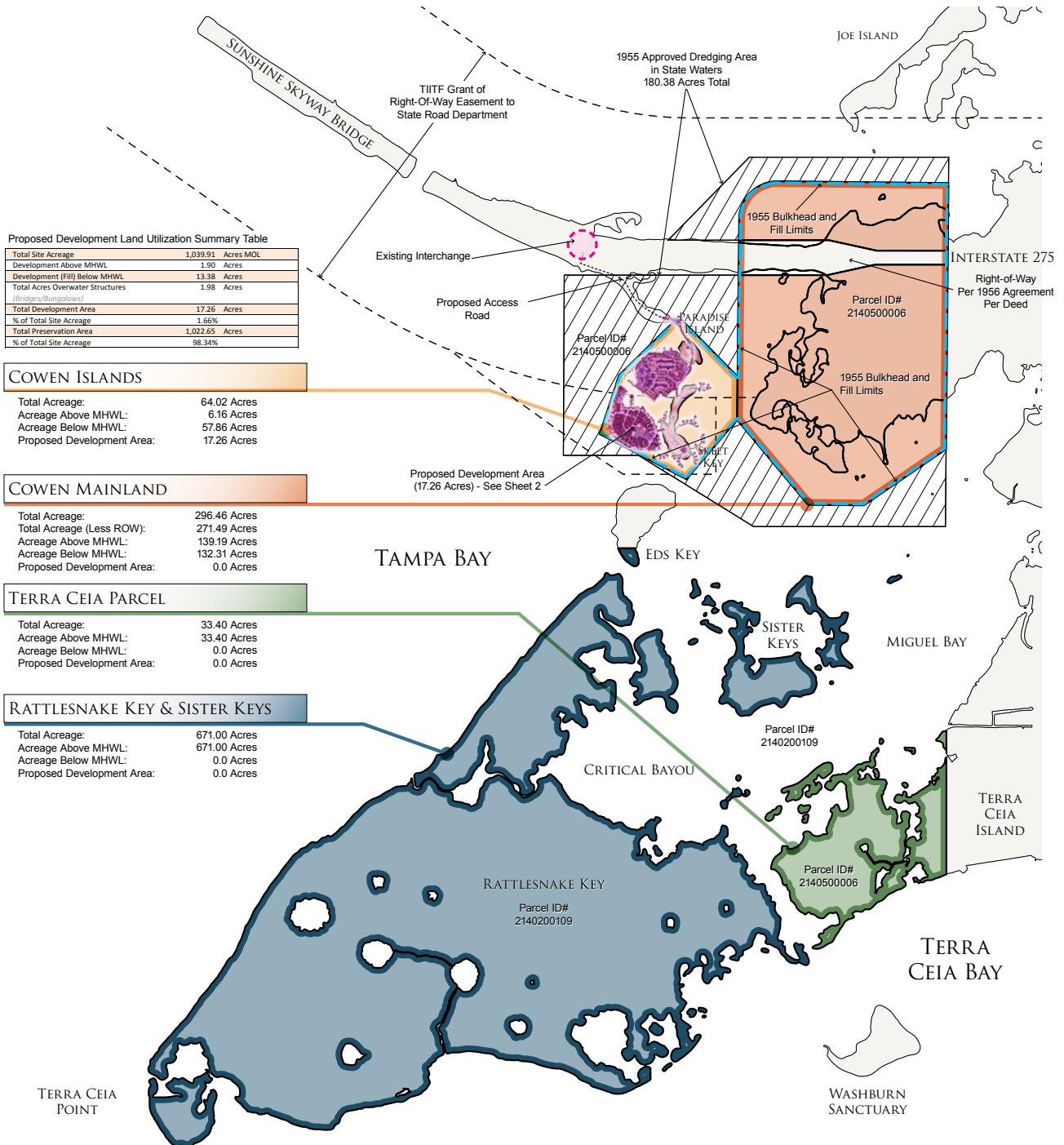




Density and Land Use Summary Table	Cowen Islands	Cowen Mainland	Terra Ceia Parcel	Rattlesnake and Sister Keys
Acreage	64.02	271.49	33.40	671.00
Comp. Plan	AG-R	RES-1	RES-1	AG-R
Comp. Plan Max Density	0.2 DU/Acre	1 DU/Acre	1 DU/Acre	0.2 DU/Acre
Existing Zoning	A	RSF-1	RSF-1	A
Zoning Max Density	0.2 Du/Acre	1 Du/Acre	1 Du/Acre	0.2 Du/Acre
Total Upland Acreage	-	1.45	-	66.00
Total Wetland Acreage	6.16	93.66	33.40	605.00
Total Submerged Lands	57.86	176.38	-	-
Wetland Density Credit*	12.80	54.30	6.68	134.20
+ Upland Acres	-	1.45	-	66.00
Total Comp Plan Acres	12.80	55.75	6.68	200.20
Less Acres for Commercial Calc	-	12.57	-	-
Acres for Density Calc	12.80	43.18	6.68	200.20
<b>Comp Plan Units</b>	2.6	43.2	6.7	40.0
	<b>Total Residential Units</b>			<b>92.00</b>
	<b>Resort Commercial Sq. FT (Medium Node)</b>			<b>150,000</b>

## SKYWAY RESORT DEVELOPMENT Density Map

The above land use and density information were assessed in a comprehensive plan, all information is subject to approvals, permits, etc. Find more on land use on **page 20**.



## SKYWAY RESORT DEVELOPMENT Density Map



## AREA AMENITIES

ORLANDO INTERNATIONAL  
AIRPORT (MCO)



### PUBLIC SERVICES

Public utilities already are accessible to the property including power, water and sewer services. There is sufficient capacity to serve this new community. This smart development will be designed to minimize its impact with water and power conservation techniques and technology. Even so, connecting to public utilities allows the property and the providers to maximize the utilization of existing infrastructure.

### UTILITIES

Manatee County Utilities (water/sewer)  
[mymanatee.org/home/government/departments/utilities](http://mymanatee.org/home/government/departments/utilities)  
Florida Power and Light (FPL)  
[fpl.com](http://fpl.com)

### TRANSPORTATION

Because this property is centrally located to several vibrant communities with a variety of goods, services, recreation and entertainment, it is also central for transportation. Manatee County Area Transit (MCAT) serves Bradenton, Ellenton, Palmetto and the Gulf Beach Communities, like Terra Ceia.

### AIRPORTS

#### **Tampa International Airport**

Over the last 35 years, TIA has become a world-class facility and one of the preeminent airports in the world. Known as “business friendly” to professionals on the go, the airport also is close to the International Mall where travelers and shoppers can take a break, get what they need and still make their flight. TIA is north of the property, via the Sunshine Skyway Expressway and I-275, about 45 minutes away.  
[srq-airport.com](http://srq-airport.com)

#### **Orlando International Airport**

Orlando International Airport (MCO) located in Orlando; in Orange County, Florida; is the closest commercial airport to Orlando’s world-class attractions, the Orange County Convention Center, and the downtown business district. It’s about a two-hour drive from the property, but offers airlines and flights that are otherwise unavailable.  
[orlandoairports.net](http://orlandoairports.net)

## AREA AMENITIES

### **Sarasota/Bradenton International Airport**

Just 45 minutes from the property, SRQ Airport serves over one million passengers a year as a gateway to the south-west Gulf coast of Florida. Major domestic and commuter airlines provide daily scheduled service, as do seasonal international and domestic charter carriers.

### **St. Pete/Clearwater Airport**

About an hour north of the property and located on the west shoreline of Tampa Bay north of St. Petersburg, the birthplace of commercial air transportation. Barely a decade after the Wright brothers' pioneer flight at Kitty Hawk, the first ticket for air travel was sold by the St. Petersburg-Tampa Airboat Line to a fare-paying passenger. Today, the St. Petersburg-Clearwater International Airport is a 2,000-acre fully certified facility with an ILS-equipped 9,730-foot runway and two 5,500-foot runways.  
fly2pie.com

### **Alfred Whitted Airport**

Just across the Sunshine Skyway Expressway, Albert Whitted Airport is owned and operated by the City of St. Petersburg, providing convenient access by air to the city's downtown waterfront, business district and urban communities. The Airport is located just blocks away from hotels, restaurants, museums, shopping and more. The 110-acre facility handles approximately 80,000 general aviation aircraft operations annually and is the home base to an estimated 185 aircraft.  
stpete.org/airport

## ROADS

The property sits just west of the southernmost Sunshine Skyway Expressway (I-275); just across the Sunshine Expressway to the north are St. Petersburg, Clearwater and Tampa. Old US-41 and US 19 provide a scenic ride north to Tampa, I-4 takes travelers to Orlando via I-75. Presently there is public discussion of high-speed rail to connect Tampa and Orlando and long-range plans for a quicker, more direct route from Manatee/Sarasota to the Greater Orlando area.

## PARKS

### **Terra Ceia Preserve State Park**

One of the better-known state parks on the west coast of Florida, Terra Ceia Preserve State Park was jointly acquired by the Water Management District and the state to better protect the water resources of Tampa Bay.  
swfwmd.state.fl.us/recreation/areas/terraceia.html

### **Madira Bickel Mound State Archeological Site**

This ancient Native American site was the first in Florida to be designated a State Archaeological Site.  
floridastateparks.org/madirabickelmound/default.cfm

### **Egmont Key State Park**

Although this park is primarily a wildlife refuge, it can be a personal refuge — a place to relax and collect shells along secluded, pristine beaches. Accessible only by private boat, Egmont Key has a unique natural and cultural history, including a lighthouse that has stood since 1858.  
floridastateparks.org/egmontkey/default.cfm

### **Cockroach Bay Preserve State Park**

Cockroach Bay Aquatic Preserve was established July 1, 1976 and was designated as an Outstanding Florida Water on March 1, 1979. Cockroach Bay Aquatic Preserve is in southern Hillsborough County and includes part of the Little Manatee River.  
dep.state.fl.us/coastal/sites/cockroach/info.htm

### **Skyway Fishing Pier State Park**

When the new Sunshine Skyway Bridge was built over Tampa Bay, connecting St. Petersburg with Sarasota, the old bridge was turned into the world's longest fishing pier.  
www.floridastateparks.org/skyway/default.cfm

### **Fort Desoto**

pinellascounty.org/park/05\_ft\_desoto.htm

### **Myakka River State Park**

This is one of Florida's oldest and largest state parks. The Myakka River flows through 57 square miles of wetlands, prairies and woodlands.  
myakkariver.org



## AREA AMENITIES

**TROPICANA FIELD**  
HOME OF THE TAMPA BAY RAYS



WIKIMEDIA COMMONS

### ARTS

**Van Wezel Performing Arts Center**

[vanwezel.org](http://vanwezel.org)

**Sarasota Opera**

[sarasotaopera.org](http://sarasotaopera.org)

**The Golden Apple Dinner Theatre**

[thegoldenapple.com](http://thegoldenapple.com)

**The Florida Studio Theatre**

[floridastudiotheatre.org](http://floridastudiotheatre.org)

**David A. Straz, Jr. Center for the Performing Arts**

[tbpac.org](http://tbpac.org)

**Ruth Eckerd Hall**

[rutherforddhall.com](http://rutherforddhall.com)

**The Sarasota Ballet**

[sarasotaballet.org](http://sarasotaballet.org)

**Tampa Museum of Art**

[tampamuseum.org](http://tampamuseum.org)

**The Powel Crosley Estate Museum**

[crosleymuseum.com](http://crosleymuseum.com)

### SPORTS

**Tampa Bay Rays**

[tampabay.rays.mlb.com](http://tampabay.rays.mlb.com)

**Cincinnati Reds - Sarasota**

[funandsun.com/1toct/sportf/cincinnati.html](http://funandsun.com/1toct/sportf/cincinnati.html)

**Pittsburgh Pirates - Bradenton**

[funandsun.com/1toct/sportf/pittsburghpirates.html](http://funandsun.com/1toct/sportf/pittsburghpirates.html)

**NY Yankees - Tampa**

[funandsun.com/1toct/sportf/newyorkyankees.html](http://funandsun.com/1toct/sportf/newyorkyankees.html)

**Philadelphia Phillies - Clearwater**

[funandsun.com/1toct/sportf/philadelphia.html](http://funandsun.com/1toct/sportf/philadelphia.html)

**Toronto Blue Jays - Dunedin**

[funandsun.com/1toct/sportf/torontobluejays.html](http://funandsun.com/1toct/sportf/torontobluejays.html)

**Tampa Bay Buccaneers**

[buccaneers.com/](http://buccaneers.com/)

**Tampa Bay Lightning**

[lightning.nhl.com/](http://lightning.nhl.com/)

**Seminole Hard Rock Hotel and Casino, Tampa**

[seminolehardrocktampa.com/](http://seminolehardrocktampa.com/)

**Orlando Magic**

[nba.com/magic](http://nba.com/magic)



## AREA AMENITIES

### ENTERTAINMENT

**South Florida Museum- Bradenton**

[southfloridamuseum.org](http://southfloridamuseum.org)

**John and Mable Ringling Museum of Art – Sarasota**

[ringling.org](http://ringling.org)

**Marie Selby Botanical Gardens – Sarasota**

[selby.org](http://selby.org)

**Sarasota Classic Car Museum**

[sarasotacarmuseum.org](http://sarasotacarmuseum.org)

**Mote Marine Laboratory and Aquarium**

[mote.org](http://mote.org)

**Sarasota Jungle Gardens**

[sarasotajunglegardens.com](http://sarasotajunglegardens.com)

**The Turner Museum**

[turnermuseum.org](http://turnermuseum.org)

**G. Wiz The Science Museum**

[gwiz.org](http://gwiz.org)

**Village of the Arts, Bradenton**

[villageofthearts.com/](http://villageofthearts.com/)

**Longboat Key Center for the Arts**

[ringling.edu/LBKCA.877.0.html](http://ringling.edu/LBKCA.877.0.html)

**Palmetto Arts Center**

[palmettoartcenter.com](http://palmettoartcenter.com)

**Neel Performing Arts Center**

[scf.edu/Academics/NeelPerformingArtsCenter/default.asp](http://scf.edu/Academics/NeelPerformingArtsCenter/default.asp)

**The Manatee Players**

[manateeplayers.com](http://manateeplayers.com)

**Asolo Repertory Theatre**

[asolorep.org](http://asolorep.org)

**Sarasota Pops Orchestra**

[sarasotapops.org](http://sarasotapops.org)

**Sarasota Music Festival**

[sarasotaorchestra.org/sarasotamusicfestival/festival.cfm](http://sarasotaorchestra.org/sarasotamusicfestival/festival.cfm)

**Cortes Fishing and Seafood Festival**

[cortezfishingfestival.org/festival/](http://cortezfishingfestival.org/festival/)

**Lakewood Ranch Festivals and Events**

[lakewoodranch.com/events/events-festivals.cfm](http://lakewoodranch.com/events/events-festivals.cfm)

**Manatee County Fair**

[manateecountyfair.com/](http://manateecountyfair.com/)

**Anna Maria Island Art League Events**

[islandartleague.org/events.html](http://islandartleague.org/events.html)

**Sarasota's Pumpkin Festival**

[sarasotapumpkinfestival.com/default.aspx](http://sarasotapumpkinfestival.com/default.aspx)



**Southwest Florida Heritage Festival**

[sarasotafl.org/event/4th-annual-southwest-florida-heritage-festival---crowley-museum/7020/](http://sarasotafl.org/event/4th-annual-southwest-florida-heritage-festival---crowley-museum/7020/)

**Kayak and Outdoor Festival**

[charlotteharbortravel.com/cms/index.php?id=242](http://charlotteharbortravel.com/cms/index.php?id=242)

**Ybor City, Tampa**

[ybor.org](http://ybor.org)

**Florida State Fair Grounds**

[floridastatefair.com](http://floridastatefair.com)

**1-800 Ask Gary Ampitheatre**

[fordamphitheatretickets.com](http://fordamphitheatretickets.com)

**Gasparilla**

[gasparillapiratefest.com](http://gasparillapiratefest.com)

**Guavaween**

[cc-events.org/gw/](http://cc-events.org/gw/)

**Tampa Bay History Center**

[tampabayhistorycenter.org](http://tampabayhistorycenter.org)

**St. Petersburg Museum of History**

[spmoh.org](http://spmoh.org)

**Florida Holocaust Museum, St. Petersburg**

[filholocaustmuseum.org](http://filholocaustmuseum.org)

**The Chihuly Collection, by the Morean Arts Center**

[chihulycollectionstpete.com](http://chihulycollectionstpete.com)







## SKYWAY RESORT DEVELOPMENT Resort

This conceptual resort plan provides for 227 total keys. The resort features a main hotel, but also resort cottages, an island lodge, and even over-water bungalows. 150,000 SF of commercial space and 106 residential ownership units are proposed. The property's location and unique site characteristics make it ideal for a destination resort.

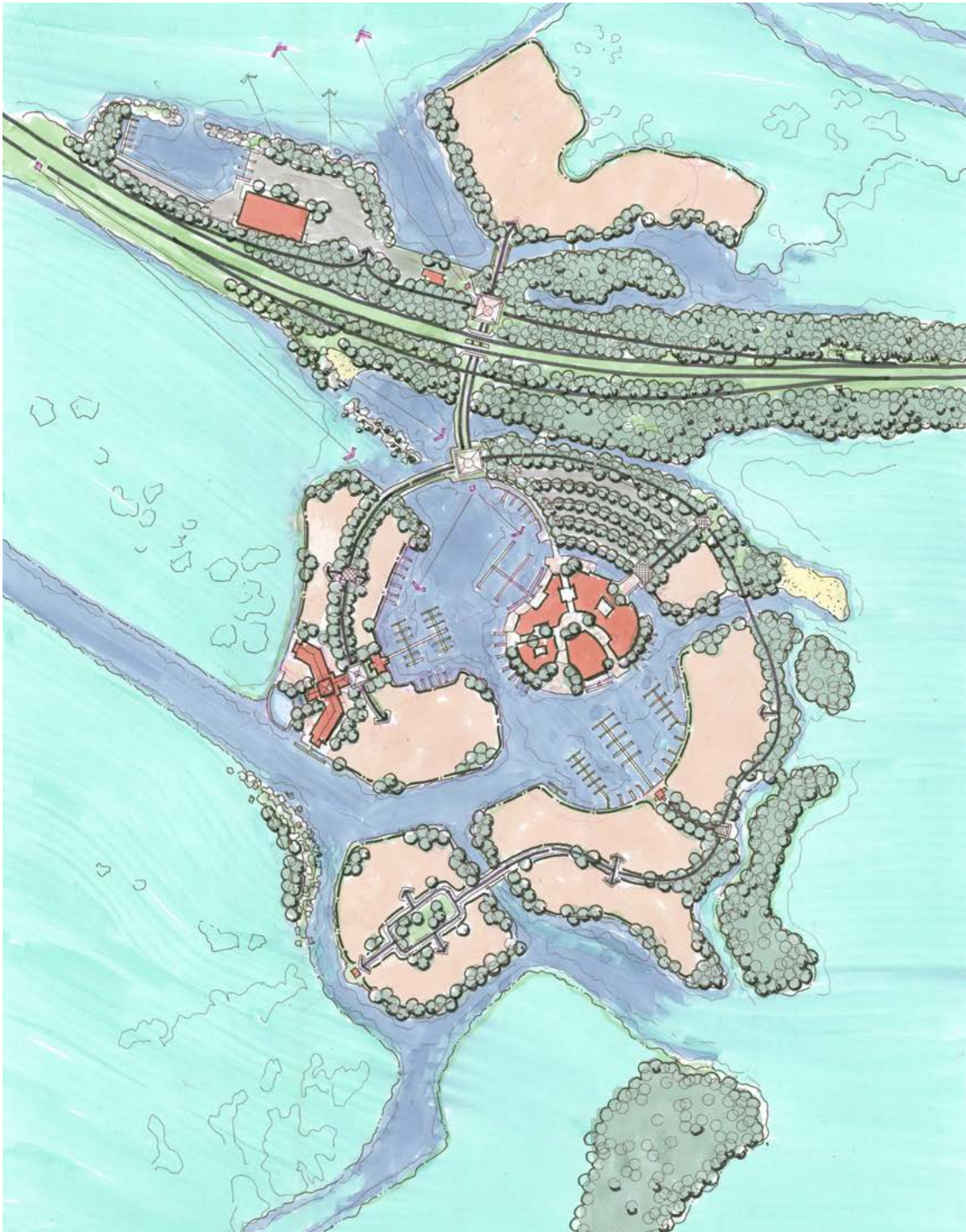


\*Plan subject to permitting and approvals



## SKYWAY RESORT DEVELOPMENT Destination Commercial Village

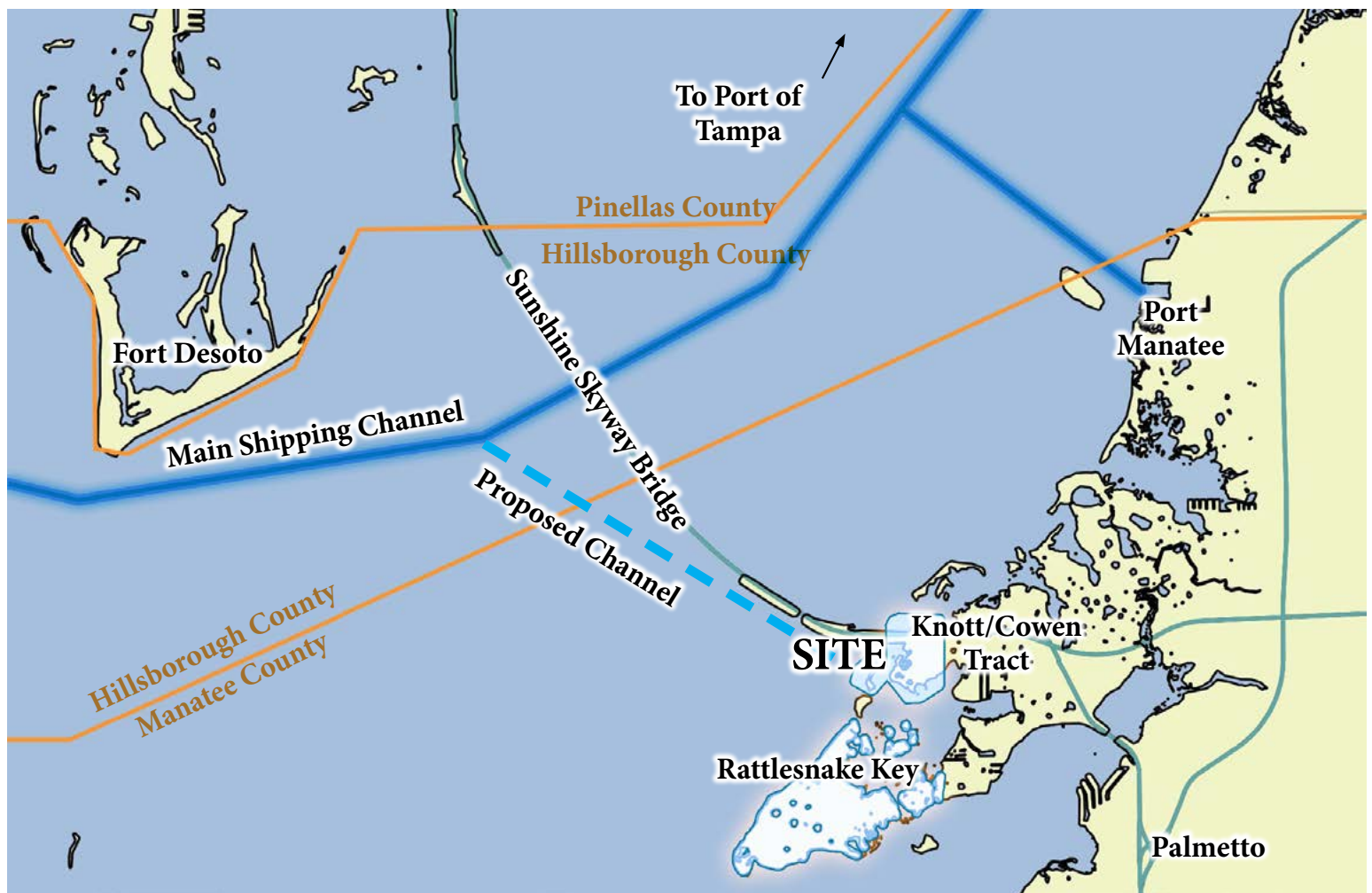
This conceptual 'commercial village' would create a one-of-a-kind eating, drinking, and shopping destination.



*\*Plan subject to permitting and approvals*

## SKYWAY RESORT DEVELOPMENT Cruise Ship Terminal

As Port Tampa Bay becomes increasingly crowded, there will be need for additional cruise terminal space. The subject property lays south of the Sunshine Skyway Bridge, and presents a great opportunity for cruise terminal development, whether private or public.



*\*Plan subject to permitting and approvals*



## SKYWAY RESORT DEVELOPMENT

### Land Use Details

#### Location

The subject properties are located in a low-lying coastal area along Tampa Bay bisected by the Sunshine Skyway and facing the mouth of the bay and the Gulf of Mexico. They consist of approximately 1,000 acres MOL of environmentally sensitive lands, including privately owned submerged lands and uplands, including: Rattlesnake Key, Paradise Island, Skeet Key, Ed's Key, Sisters Key, the southwest tip of Terra Ceia Island and the Cowen Tract, which carries with it the rights to bulkhead and fill and to dredge the necessary fill from surrounding adjacent State-owned sovereignty submerged lands. The properties have over 10 miles of undeveloped shoreline. The site is near the Terra Ceia State Park and is surrounded by, but not located within the Terra Ceia Aquatic Preserve. The properties are listed for priority acquisition under the State's Florida Forever program and are within the state's Optimal Expansion Boundary for the Terra Ceia State Park.

#### Fill & Dredge Rights

Historically certain submerged lands and adjacent wetlands were sold by the state to private parties with the express intent of all concerned that the lands conveyed be bulkhead, filled and developed with commercial and residential uses. The 356 acre Cowen Tract (consisting of Cowen Mainland and Cowen Islands) falls into this category as parts were conveyed by the State into private hands at various times most recently in 1956.

The 1956 conveyance by the State of the entirety of the Cowen Tract also included the rights to dredge adjacent State-owned submerged lands to provide a source of fill for development of the Cowen Tract. The existence of these rights has been acknowledged by the State. Because submerged lands are no longer sold by the state for private waterfront development today, these rights are very unique, and are, essentially, the rights to create and develop new waterfront property.

#### Access

In connection with the 1956 sale of the Cowen Tract into private hands, access to and from U.S. 19 was approved by the State every 660 feet along U.S. 19 where the Cowen Tract abutted U.S. 19. U.S. 19 was later incorporated into the Interstate Highway System as Interstate 275. The Cowen Tract also enjoys an ease of access to Interstate 275 which could enable access to and from the Cowen Tract via the existing interchange serving the south Skyway Fish Pier and rest area. The south tip of Terra Ceia Island appears to have potential access from the Terra Ceia Island mainland, while Rattlesnake Key and Sisters Keys would be accessible by boat only.

#### Water, Sewer, and Electric Service Availability

The existing Sunshine Skyway Fishing Pier and rest area is presently served by public water, sewer and electric located at the interchange. A preliminary analysis by the engineering firm Wilson Miller determined that the infrastructure is sized sufficiently to accommodate expansion and there was adequate water and sewer capacity for the proposed project at the time of their study. Utilities are also available to the south of the property.

#### Existing Future Land Use & Zoning Designations

Rattlesnake Key, Ed's Key, Gus Point and the Cowen Islands (Paradise Island and Skeet's Key) are designated on the future land use map as AG/R, Agricultural/Rural which allows one residential unit per 5 acres. These areas are zoned A, a parallel zoning district restricting density to one unit per acre. The Cowen Mainland and the Terra Ceia mainland parcels are designated on the future land use plan as RES-1, Residential, at one residential unit per acre. These areas are zoned RSF-1, Residential Single Family, 1 Unit/Acre, which is a parallel zoning district.

#### Commercial Location Criteria

The highest residential density within the project site is RES-1 which allows consideration for up to medium intensity commercial node. Maximum commercial square footage is 150,000 square feet.









## AGENT INFORMATION



### DEAN SAUNDERS OWNER/BROKER

Dean Saunders, ALC, CCIM is owner/broker of Coldwell Banker Commercial Saunders Real Estate (CBCSRE) in Lakeland, Florida.

Since 1985, Dean has specialized in Florida land and conservation easements. He served in the US Senate as Agricultural Liaison, Special Assistant, and Director of External Affairs to US Senator Lawton Chiles, then Governor Chiles (D-FL).

From 1992 to 1996, he served in the Florida House of Representatives, where his passion for supporting land-owner property rights and conserving property's natural resources culminated in his authorship of groundbreaking conservation legislation.

In 1996, Dean formed the real estate brokerage firm as Saunders Real Estate, LLC and affiliated with the Coldwell Banker Commercial brand in early 2006.

**863-774-3522**

**Dean@SREland.com**



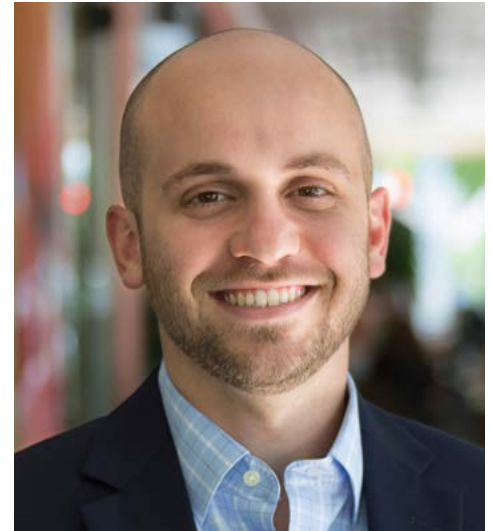
### GARY RALSTON MANAGING PARTNER/ BROKER

Gary M. Ralston, CCIM, SIOR, SRS, CPM, CRE, CLS, CDP, CRX, FRICS is a managing partner of Coldwell Banker Commercial Saunders Ralston Dantzler Realty, LLC – the premier commercial services provider in Central Florida (Polk County). He is a recognized subject matter expert on retail and commercial properties. His experience includes the complete spectrum of commercial real estate services. In addition, he is a successful real estate developer, investor, and group investment sponsor.

From the early 1990s through 2004 Gary was the president and a member of the board of directors of Commercial Net Lease Realty, Inc. the industry leader in single-tenant corporate net-leased real estate. During that time he guided the company's growth from less than \$15 million in real estate assets to over \$1.5 billion.

**863-877-2828**

**Gary@SRDcommercial.com**



### DAVID HUNGERFORD SALES ASSOCIATE

David Hungerford is the Director of Research and a sales associate with Coldwell Banker Commercial Saunders Ralston Dantzler Realty, LLC – the premier commercial services provider in Central Florida. Through the use of dynamic strategic analysis, he is an expert in site selection and site-in-search of user analysis. David is the mapping and ARCGIS specialist within the firm.

David previously worked in his family-owned business, Hungerford & Associates, as a financial advisor. Prior to becoming a financial advisor, he served as the company's marketing director.

David graduated Cum Laude from Florida State University in Tallahassee, FL. He obtained a Bachelor of Science degree in real estate and a Bachelor of Science degree in finance.

**863-272-7156**

**DHungerford@SRDcommercial.com**



# Saunders

REAL ESTATE

863.648.1528

114 N. Tennessee Ave.

3rd Floor

Lakeland, FL 33801

**991.25 ± Acres • Commercial Development Opportunity!**

*Nearly 3 miles fronting Tampa Bay • Road Frontage on I-275*

*View Aerial Video!*

## SREland.com/SkywayResort

*Dean Saunders, ALC, CCIM 863.774.3522 | Dean@SREland.com*

*Gary Ralston, CCIM, SIOR 863.877.2828 | Gary@SRDcommercial.com*

*David Hungerford 863.272.7156 | DHungerford@SRDcommercial.com*

### LAKELAND OFFICE:

114 N. Tennessee Ave. 3rd Floor

Lakeland, FL 33801

863.648.1528 - Main Office

### HIGH SPRINGS OFFICE:

P.O. Box 809 (32655)

18622 NW US 441

High Springs, FL 32643

©2017 Coldwell Banker Commercial Saunders Real Estate. All rights Reserved, Worldwide. Every attempt is made to provide accurate information on this property, however, COLDWELL BANKER COMMERCIAL SAUNDERS REAL ESTATE (CBCSRE) does not guarantee the accuracy. Buyer should rely entirely on their own research, inspection of property, and records.  
©2017 Coldwell Banker Real Estate LLC, dba Coldwell Banker Commercial Affiliates. All Rights Reserved. Coldwell Banker Real Estate LLC, dba Coldwell Banker Commercial Affiliates fully supports the principles of the Equal Opportunity Act. Each Office is Independently Owned and Operated. Coldwell Banker Commercial and the Coldwell Banker Commercial Logo are registered service marks owned by Coldwell Banker Real Estate LLC, dba Coldwell Banker Commercial Affiliates.



021517-A