

# BRANCH FORBES AND I-4 ACREAGE

*PLANT CITY, FL | HILLSBOROUGH COUNTY*

12.7 ± ACRES



ONLY 900 FT FROM THE I-4 EXIT!



## SPECIFICATIONS & FEATURES

**Acreage:** 12.7 ± acres

**Sale Price:** \$295,000

**Price per Acre:** \$23,228

**Site Address:** Branch Forbes Road, Plant City, FL 33565

**County:** Hillsborough

**Road Frontage:** 225 ± FT

**Use:** Residential Development

**Uplands/Wetlands:** Less than one acre of wetlands

**Taxes:** \$67 in 2019

**Income:** Cattle lease

**Zoning:** Mixed

**Taxes:** Fenced and cross fenced

**Nearby Points of Interest:** Dinosaur World

Branch Forbes and I-4 Acreage is an excellent opportunity for an investor or developer in one of the nation's fastest-growing regions, the I-4 corridor.

With over 21 million people, Florida is the third most populated state in America and grows by almost 900 people per day. Housing growth continues to be extremely strong across the I-4 corridor. Currently, demand exceeds supply, so residential development of houses, townhouses, and apartments is on the rise.

This property is fenced and cross-fenced and currently leased for cattle. A gas pipeline bisects roughly midway through the property from north to south.



## LOCATION & DRIVING DIRECTIONS

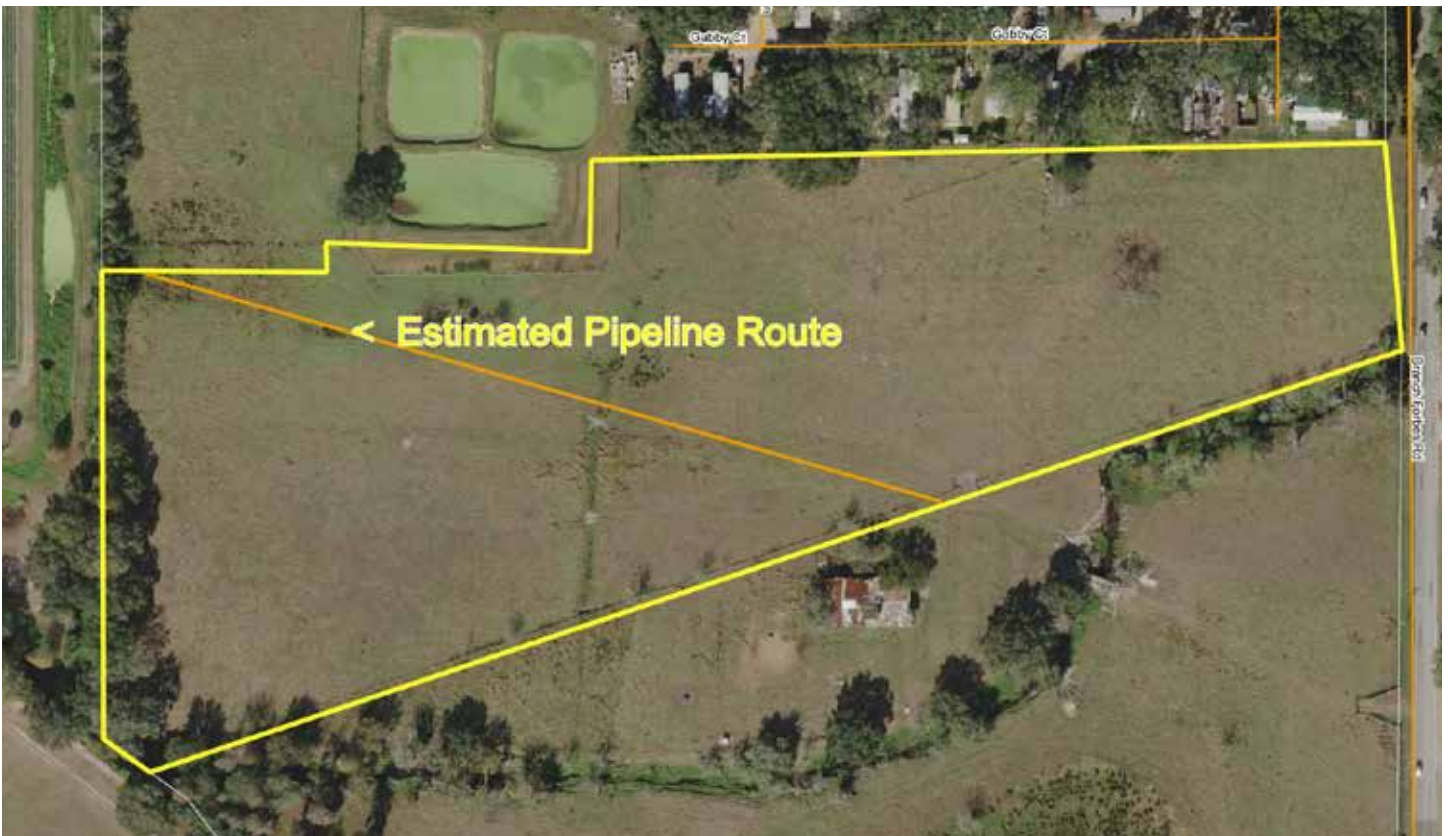
**Parcel IDs:** U-22-28-21-ZZZ-000003-67290.0

**GPS Location:** -82.18707, 28.03126

**Driving Directions:**

- From Plant City head west on I-4
- Take Exit 17 for Branch Forbes Road
- Go north on Branch Forbes Road
- Property is 900' on the left

**Showing Instructions:** Please call the advisor to schedule a showing.





114 N. Tennessee Ave.  
3rd Floor  
Lakeland, FL 33801

**12.7 ± Acres • Development acreage in I-4 corridor**  
Excellent investment or residential and mixed-use development property

Visit [SVNsaunders.com](http://SVNsaunders.com) and search for: **BRANCH FORBES**

Richard Dempsey, ALC | 863.851.1903 | [r.dempsey@svn.com](mailto:r.dempsey@svn.com)



**LAKELAND OFFICE:**  
114 N. Tennessee Ave. 3rd Floor  
Lakeland, FL 33801  
863.648.1528 - Main Office

**LAKE CITY OFFICE:**  
356 NW Lake City Avenue  
Lake City, FL 32055  
386.438.5896

©2020 SVN | Saunders Ralston Dantzler Real Estate. All SVN® Offices Independently Owned and Operated  
SVN | Saunders Ralston Dantzler Real Estate is regarded as an authority on all types of Florida land  
and conservation easements, transacting over \$2.9 billion in sales since 1996. Offering land, forestry,  
and conservation easement real estate services through Saunders Ralston Dantzler Real Estate and  
the Saunders Real Estate Forestry Group, the Saunders team of land professionals offers advisory and  
transactional services through their home office in Lakeland, FL, the North Florida office in Lake City,  
FL, and the South Georgia office in Thomasville, GA. We provide services to land and commercial clients  
through our commercial real estate brokerage, Saunders Ralston Dantzler Real Estate.



080720-A