

The seal is an octagonal emblem with a decorative border. Inside the border, the words "STATE OF TEXAS" are written along the top arc, and "PROFESSIONAL LAND SURVEYOR" along the bottom arc. In the center, the name "HENRY A. KUEHELM" is written above the number "4020". A five-pointed star is positioned between the name and the number.

---

Journal of Management Inquiry 26(4) 399-416 © The Author(s) 2017. Reprints and permissions: [sagepub.com/journalsPermissions.nav](http://sagepub.com/journalsPermissions.nav) DOI: 10.1177/1056492617718101

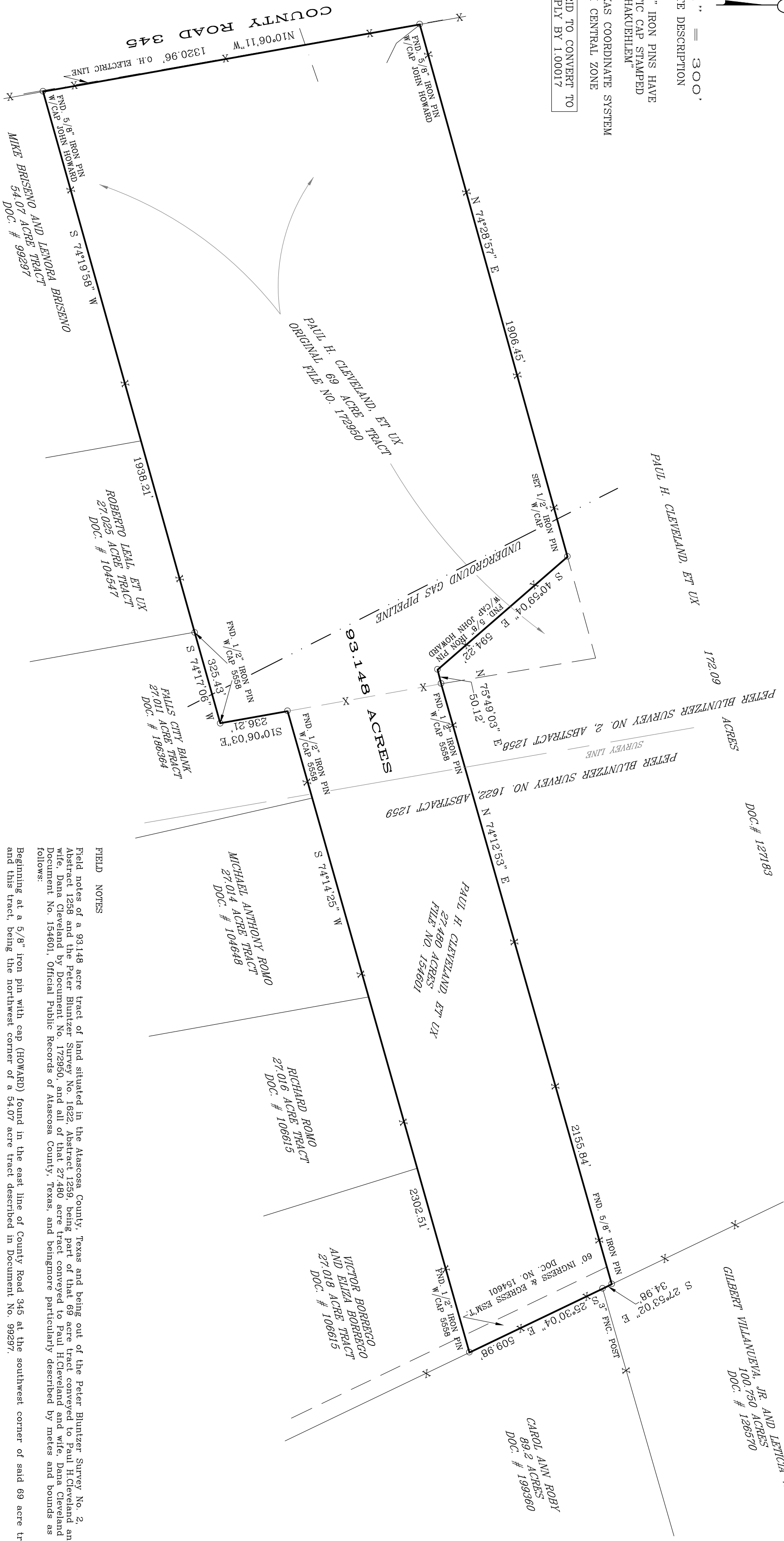
RE: FIELD NOTE DESCRIPTION

NOTE: SET 1/2" IRON PINS HAVE  
ORANGE PLASTIC CAP STAMPED  
"BASELINE HAKUEHELEM"

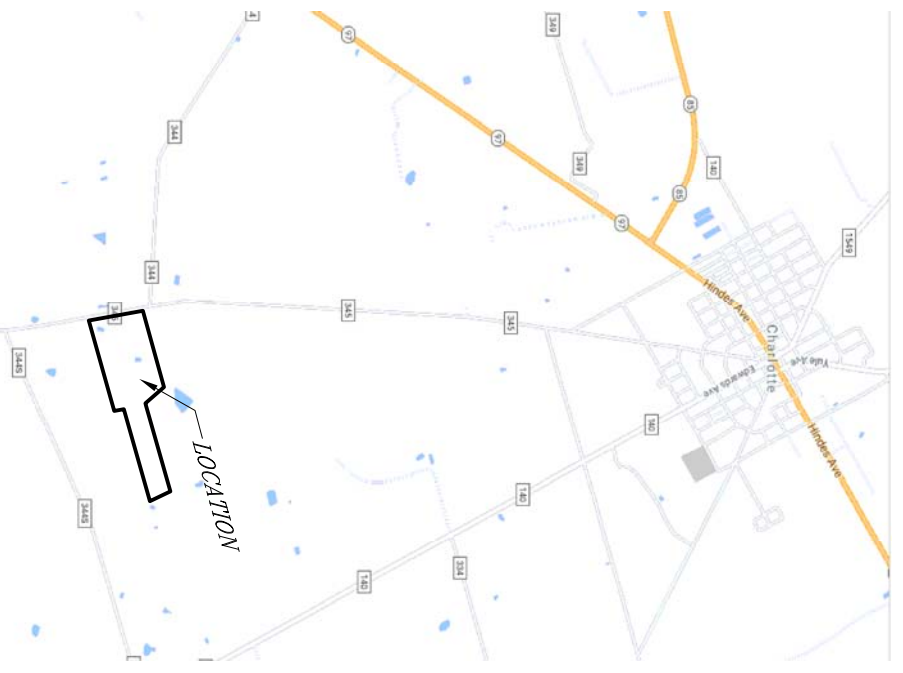
### "BASELINE HAKUEHLEM"

BEARING SOURCE TEXAS COORDINATE SYSTEM  
NAD 83 SOUTH CENTRAL ZONE

DISTANCES ARE GRID TO CONVERT TO  
SURFACE MULTIPLY BY 1.00017



VICINITY MAP N.T.S.



## FIELD NOTES

Field notes of a 831.48 acre tract of land situated in the Alascosa County, Texas and being out of the Peter Bluntner Survey No. 2, Abstract 1258 and the Peter Bluntner Survey No. 1622, Abstract 1259, being part of that 69 acre tract conveyed to Paul H. Cleveland and wife, Dana Cleveland by Document No. 172830, and all of that 27,480 acre tract conveyed to Paul H. Cleveland and wife, Dana Cleveland by Document No. 134601, Official Public Records of Alascosa County, Texas, and beingmore particularly described by metes and bounds as follows:

Beginning at a 5/8" iron pin with cap (HOWARD) found in the east line of County Road 345 at the southwest corner of said 69 acre tract and this tract, being the northwest corner of a 54.07 acre tract described in Document No. 99297.

Thence N 10° 06' 11" W 320.96 feet along the east line of County Road 345 to a 5/8" iron pin with cap (HOWARD) found at the northeast corner of said 69 acre tract and this tract, being the southwest corner of a 172.09 acre tract described in Document No. 27183.

Thence N 74° 28' 57" E. 1906.45 feet along the iron pin set at a northeast corner of this tract.

Thence with fence across said 69 acre tract, as follows:

N 75° 49' 03" E, 501.2 feet to a 1/2" iron pin with cap (5568) found in the east line of said 69 acre tract, being the northwest corner of said 27.480 acre tract.

Thence N 74° 12' 53" E, 2155.84 feet along the south line of said 172.09 acre tract, being the north line of said 27,480 acre tract, to a 5/6" iron pin found at the southeast corner of said 172.09 acre tract, being the northeast corner of said 27,480 acre tract and this tract.

Thence along the east line of said 27.480 acre tract, being the west line of a 100.750 acre tract described in Document No. 126570 and the west line of a 89.2 acre tract described in Document No. 199360, as follows:

corner of said 89.2 acre tract. S 25° 30' 04" E. 509.98 feet to a ½" iron pin with cap (E 27.480 acre tract and this tract, being the northeast corner of a 27.018 acre tract described in Document No. 106615

These S 7<sup>th</sup>, 14<sup>th</sup>, 25<sup>th</sup>, 2303.25 feet along the south line of said tract 27,480 acre tract, being the north line of said 27,018 acre tract.

Tract described in Document No. 106615, a 27,014 acre tract described in Document No. 104648, and a 27,011 acre tract described in Document No. 186334, and a ½ iron pin with cap (5559) found in the east line of said 69 acre tract, being the southwest corner of said 27,480 acre tract and an iron pin at the corner of said 27,480 acre tract,

Thence S 10° 06' 03" E. 236.21 feet along the east line of said 69 acre tract to corner of said 69 acre tract, being an interior corner of said 27.011 acre tract.

Thence along the south line of said 69 acre tract, being the north line of said 27.011 acre tract, a 27.025 acre tract described in Document No. 104547, and said 54.07 acre tract, as follows:

S 74° 17' 06" W. 325.43 feet to a ½" iron pin with cap (3556) found at the northwest corner of said 27.011 acre tract, being the northeast corner of said 27.025 acre tract.

All 1/2" iron pins set with orange plastic cap "BASELINE HAKUEHEM"

RE: Plat - Bearing Source: Texas Coordinate System NAD 83 - South Central Zone  
Distances are GRID - to convert to surface multiply by 1.00017

J.L.G.  
DRAWN BY:

H.A.K.  
CHECKED BY:

H.A.K.  
PPROVED BY:

SEPTMBER 28, 2020  
SURVEYED DATE:

1

SHEET: \_\_\_\_\_

OF: 1

PLAT OF 93.148 ACRES BEING A PORTION OF THAT  
69 ACRE TRACT AND ALL OF THAT 27.480 ACRE  
TRACT CONVEYED TO PAUL H. CLEVELAND AND WIFE  
DANA CLEVELAND, OUT OF THE PETER BLUNTZER SURVEY  
NO. 2, ABSTRACT 1258 AND THE PETER BLUNTZER SURVEY  
NO. 1622, ABSTRACT 1259, ATASCOSA COUNTY,  
TEXAS.