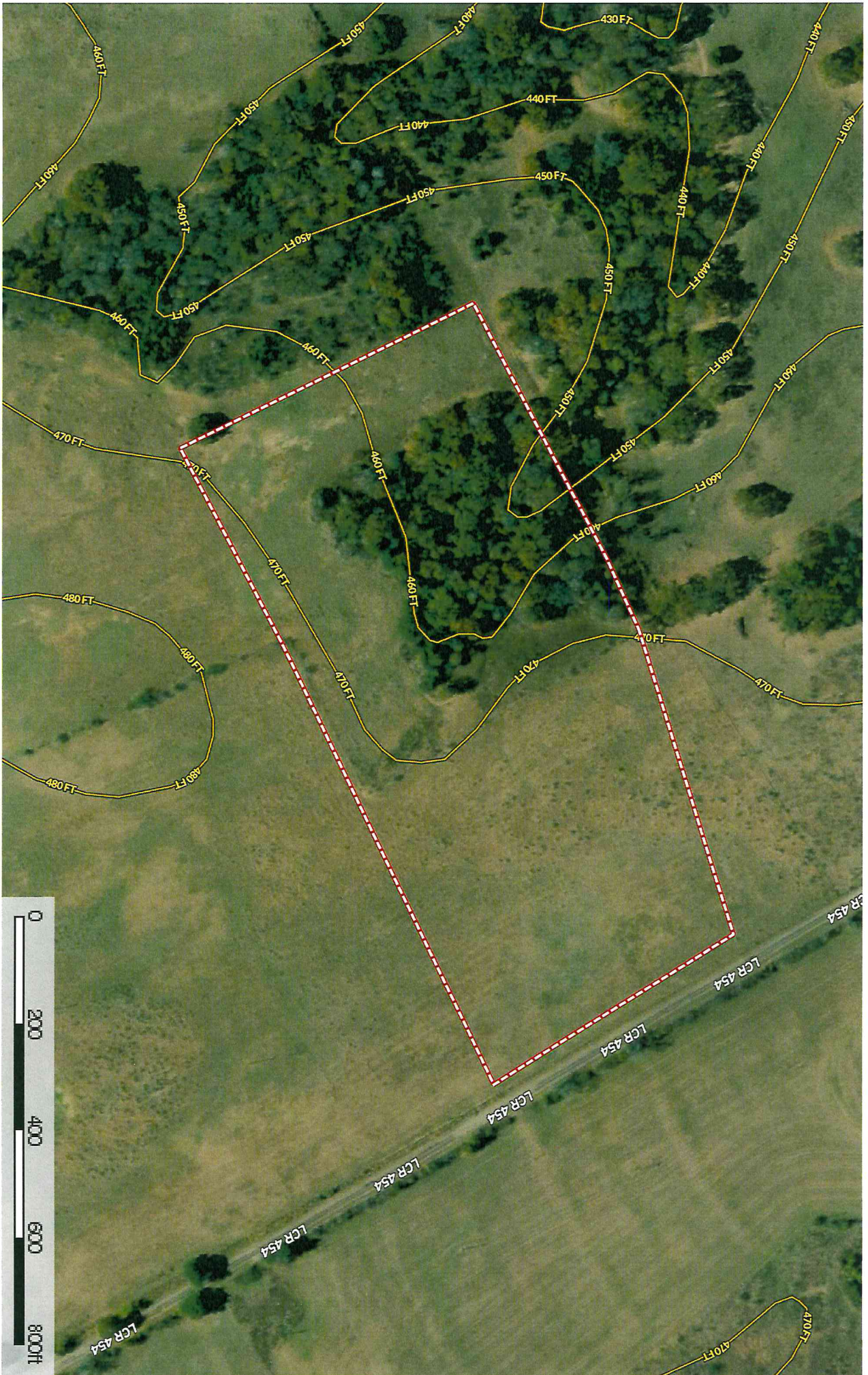


Klein 13 acres LCR 454
Texas, AC +/-



-  Boundary
-  100 Year Floodplain
-  500 Year Floodplain
-  Floodway
-  Special
-  Unmapped/ Not Included



13 acres LCR 454 Groesbeck Restrictions

The following are deed restrictions that will apply to the sale of the 13 acres on LCR 454.

1. No subdividing the property
2. No mobile homes or Manufactured homes including RVs are allowed
3. Commercial businesses of any kind are not allowed
4. Chicken houses may be used for personal use so long as they are kept below 20 total chickens
5. No dog kennels, hog farms, salvage yards or junk yards
6. No discharging of rifles of any kind on the property
7. Any structures (including the home) built on the property must be at least 250 feet from the county road
8. The home built on the property must contain a minimum of 1200 square feet or larger of living space with a maximum of one home built on the property

Buyer

Buyer