

82.25 Acres

J O Ranch



Located in southwestern Edwards county

Easy access, less than one mile off US377

Less than a 30 minute drive from Rocksprings

The terrain is rolling to sloping and the hilltops offer 20 mile views

Nice level areas are scattered throughout, with a wet-weather creek sweeping through the ranch

Moderate to heavy cover with a variety of vegetation including abundant oak trees

The 16X40 cabin is in "like new condition" -- one bedroom; full bath; hot water

Top of the line solar/battery inverter system provides the camp with all the power you will need

Generator hook-up available but rarely needed

Great water collection system, with strong pump provides all the pressure you will need

Spacious 12x30 covered deck provides a great spot to enjoy the hilltop views

440sqft storage shed for extra storage

Game cleaning station with LED lighting and water

The camp area is fenced

Three blinds and two feeders in place

Game includes whitetail, turkey, axis, hogs, aoudad

Ag exempt taxes

\$269,000

listing #76

Western Hill Country Realty

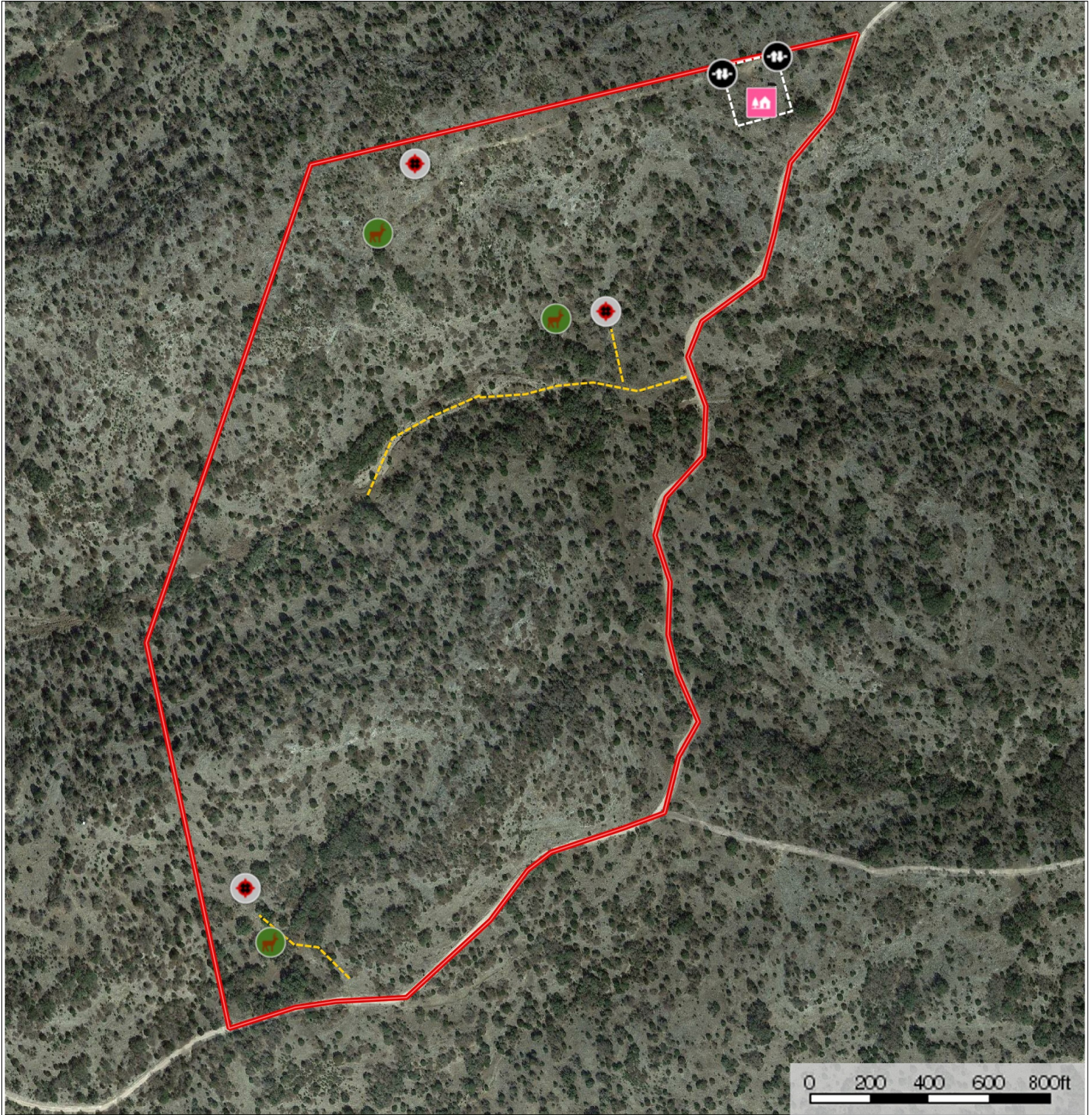
www.westernhillcountryrealty.com

info@westernhillcountryrealty.com

830-683-4435

82.25 Acres

J O Ranch



 Cabin  Blind  Feeder  Gate Fence  Road / Trail  Boundary

Western Hill Country Realty

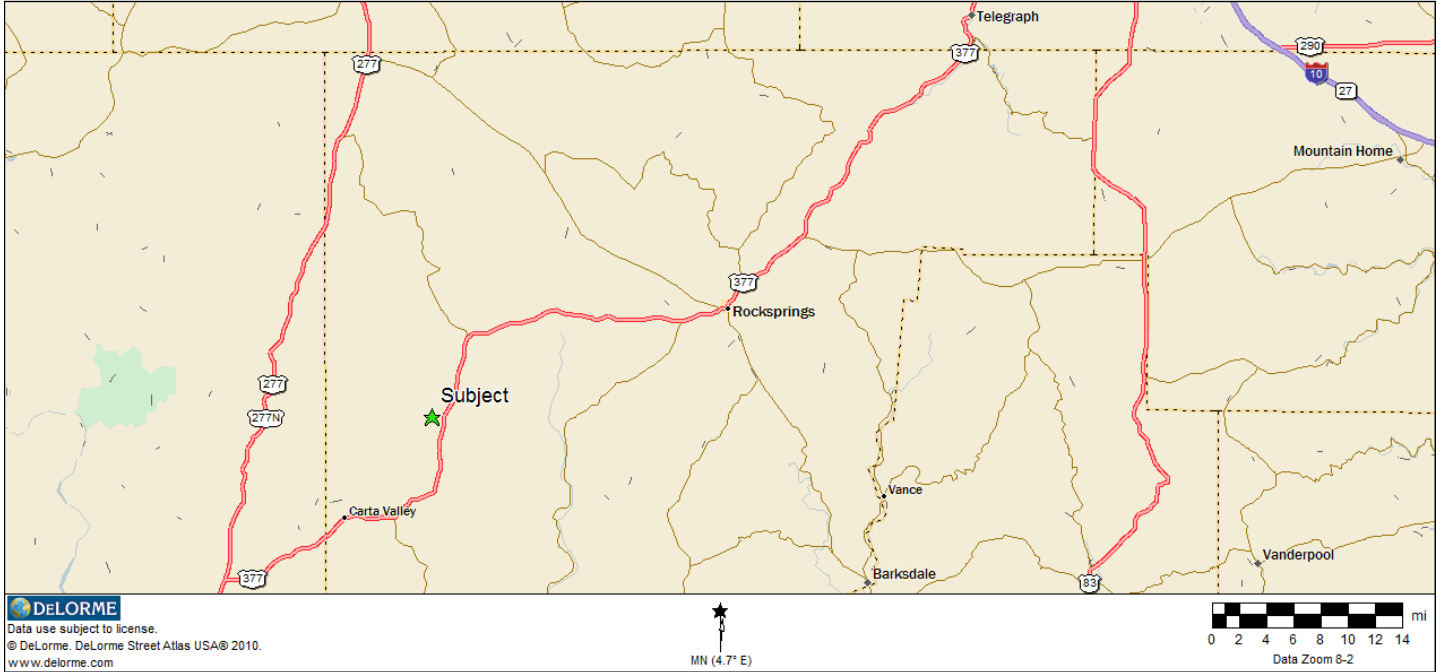
www.westernhillcountryrealty.com

info@westernhillcountryrealty.com

830-683-4435

82.25 Acres

J O Ranch



Western Hill Country Realty

www.westernhillcountryrealty.com

info@westernhillcountryrealty.com

830-683-4435