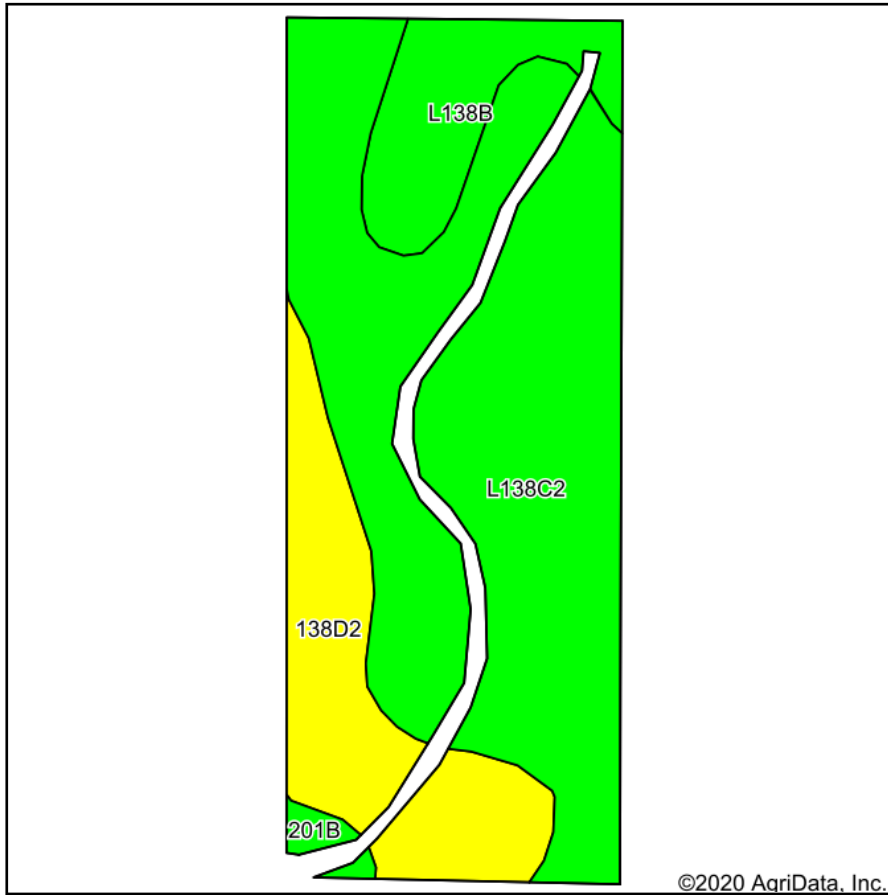
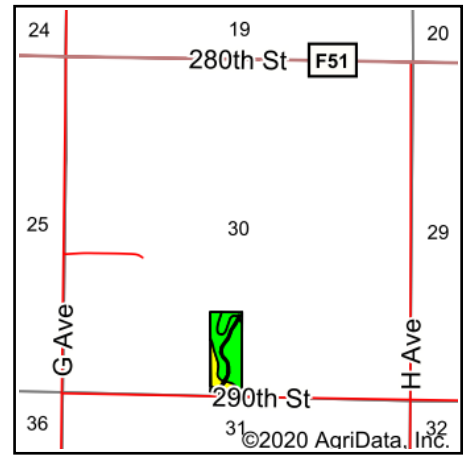


Tillable Soils Map



Soils data provided by USDA and NRCS.



State: **Iowa**
 County: **Dallas**
 Location: **30-79N-28W**
 Township: **Colfax**
 Acres: **13.83**
 Date: **11/23/2020**



Maps Provided By:



Code	Soil Description	Acres	Percent of field	CSR2 Legend	Non-Irr Class *c	*i Corn	*i Soybeans	CSR2**	CSR	*n NCCPI Overall
L138C2	Clarion loam, Bemis moraine, 6 to 10 percent slopes, moderately eroded	9.32	67.4%		IIIe	0	0	83		67
138D2	Clarion loam, 9 to 14 percent slopes, moderately eroded	2.81	20.3%		IIIe	176	51	54	56	70
L138B	Clarion loam, Bemis moraine, 2 to 6 percent slopes	1.53	11.1%		Ile	80	23.2	88		80
201B	Coland-Terril complex, 2 to 5 percent slopes	0.17	1.2%		IIw	208	60.3	74	68	83
Weighted Average						47.2	13.7	77.6	*-	*n 69.2

**IA has updated the CSR values for each county to CSR2.

*- CSR weighted average cannot be calculated on the current soils data, use prior data version for csr values.

*i Yield data provided by the ISPAID Database version 8.1.1 developed by IA State University.

*n: The aggregation method is "Weighted Average using all components"

*c: Using Capabilities Class Dominant Condition Aggregation Method

Soils data provided by USDA and NRCS.