

ABOUT THE FARM

51.86 acres m/l of prime Warren County farmland located just North of New Virginia, Iowa with easy access to Interstate 35. The farm has 41.79 tillable acres m/l carrying a CSR2 of 70.6. This property would make an excellent addition to an existing farming operation or a great purchase for a first time farmer. There are several ideal building sites and plenty of recreational opportunities with the wooded creek running along the east side of the property. This property is rented for 2021 with details provided upon request. Electric service and rural water are at the road.

FARM DETAILS

FSA Cropland Acres: 41.79
Corn: 27.1 Base Acres With PLC Yield of 95

DIRECTIONS

From New Virginia, Iowa: Head North on County Road R45 for roughly 2.25 miles. Take a left onto Stone Street. The property is on the right.

From the South side of West Des Moines: Head South on interstate 35 for 20 miles. Take exit 47 and head East on County Road C64. After a mile take a left onto Stone Street. The property will be on your left.

PROPERTY ADDRESS

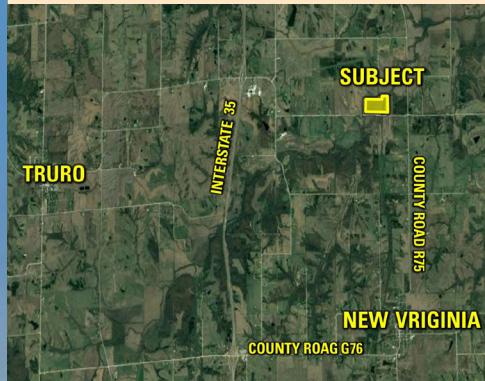
Stone Street
New Virginia, IA 50210

CONTACT

Daran Becker: 515.979.3498
Daran@PeoplesCompany.com



WARREN COUNTY FARMLAND AVAILABLE



51.86 ACRES M/L

FOR MORE INFORMATION VISIT [PEOPLES COMPANY.COM](https://www.peoplescompany.com) | LISTING #15290