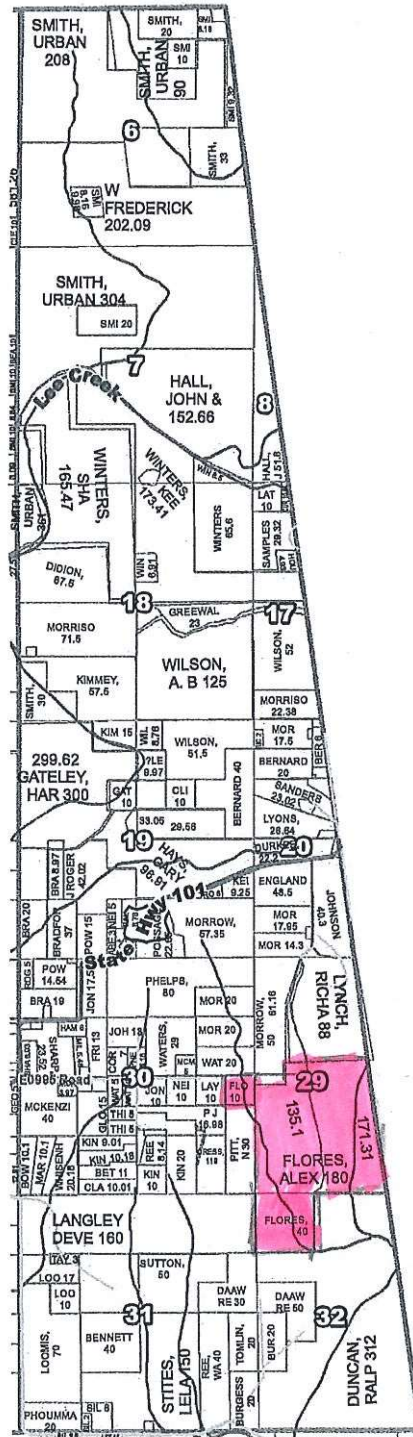


Sequoyah County

T13N R27E




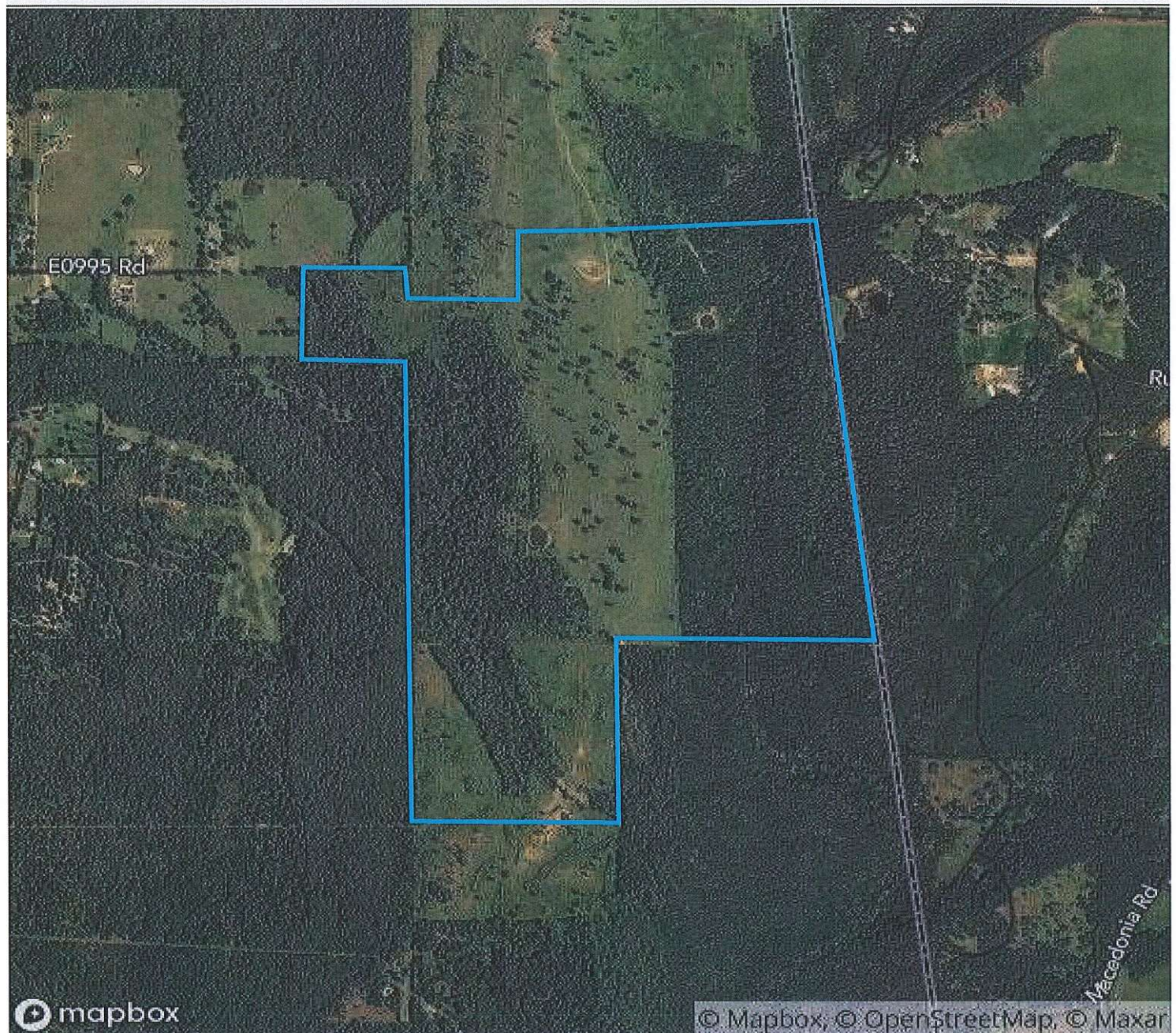
See T12N R27E Page 19

1 field, 229 acres in Sequoyah County, OK

TOWNSHIP/SECTION 13N 27E - 29, 30, 31, 32

Sequoyah County, OK

FIELD	ACRES	LOCATION	OWNER (LAST UPDATED)	OWNER ADDRESS
	228.83	13N 27E - 29, 30, 31, 32	WALKER, STEVE & LYN; N/A (07/23/2020)	N/A



mapbox

© Mapbox, © OpenStreetMap, © Maxar

1 field, 229 acres in Sequoyah County, OK

TOWNSHIP/SECTION 13N 27E - 29, 30, 31, 32



All fields

229 ac



2019



2018



2017



2016



2015

■ Forest

70.3%

66.1%

64.4%

67.0%

66.1%

■ Grass/Pasture

28.3%

33.5%

34.7%

32.9%

33.9%

■ Other

1.5%

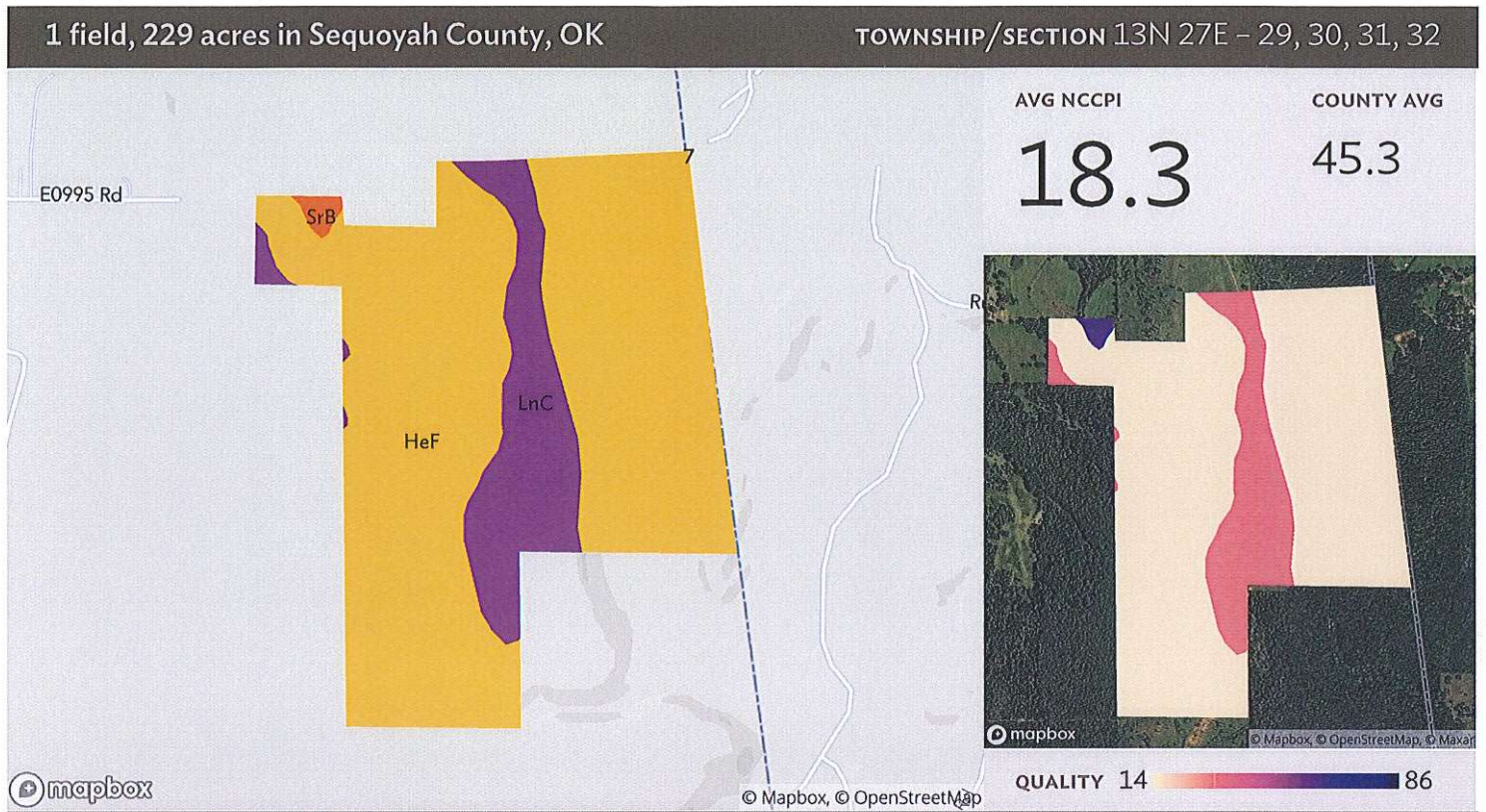
0.4%

1.0%

0.1%

-

Source: NASS Cropland Data Layer



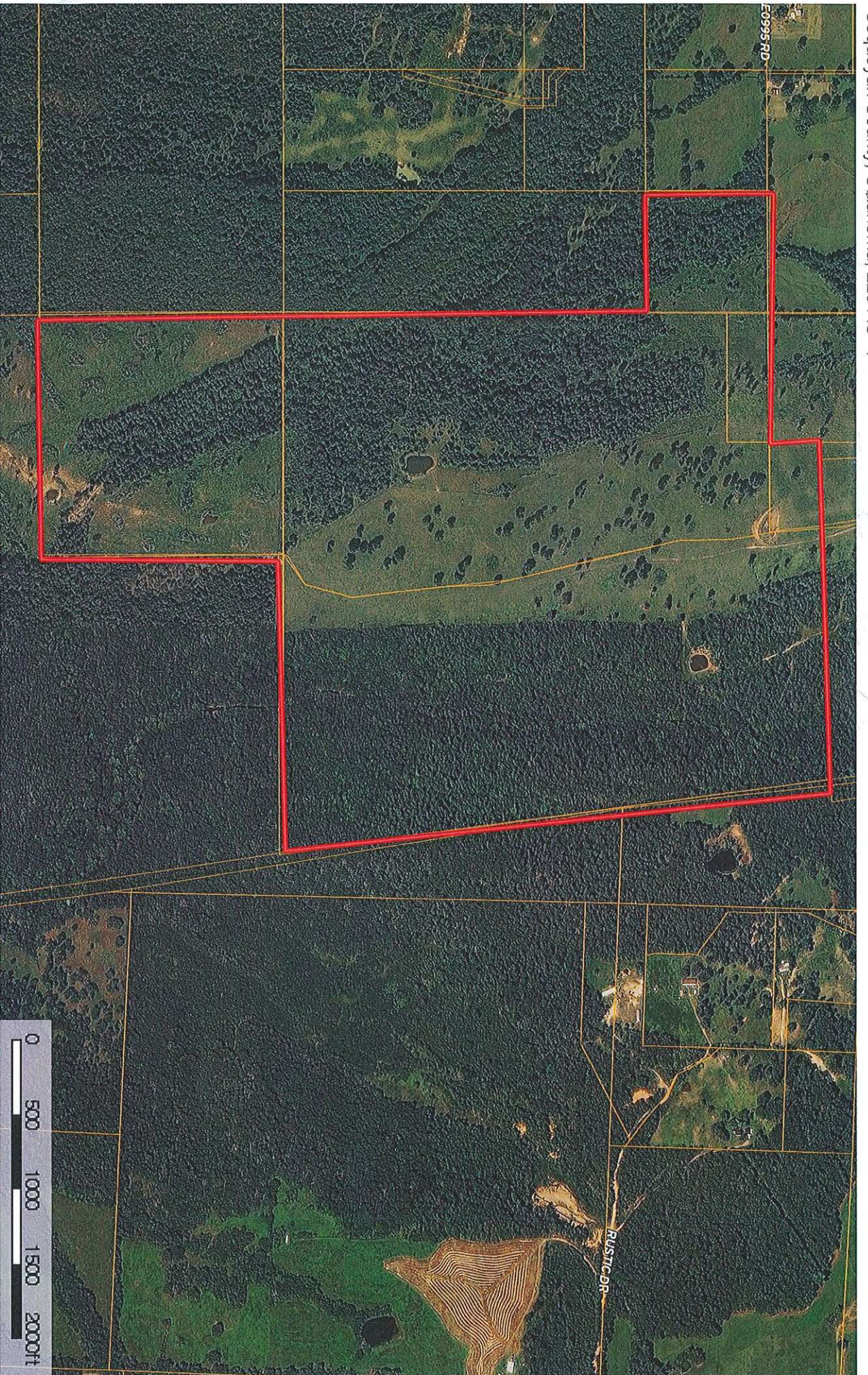
Source: NRCS Soil Survey

All fields

229 ac

SOIL CODE	SOIL DESCRIPTION	ACRES	PERCENTAGE OF FIELD	SOIL CLASS	NCCPI
HeF	Hector-Linker-Enders complex, 5 to 40 percent slopes, extremely stony	189.16	82.7%	7	15.4
LnC	Linker-Hector complex, 3 to 5 percent slopes	38.06	16.6%	4	30.7
SrB	Stigler silt loam, 1 to 3 percent slopes	1.61	0.7%	3	63.3
7	Enders stony fine sandy loam, 12 to 50 percent slopes	0.00	0.0%	7	11.5
228.83					18.3

Walker
Sequoyah County, Oklahoma, 229 AC +/-



Boundary

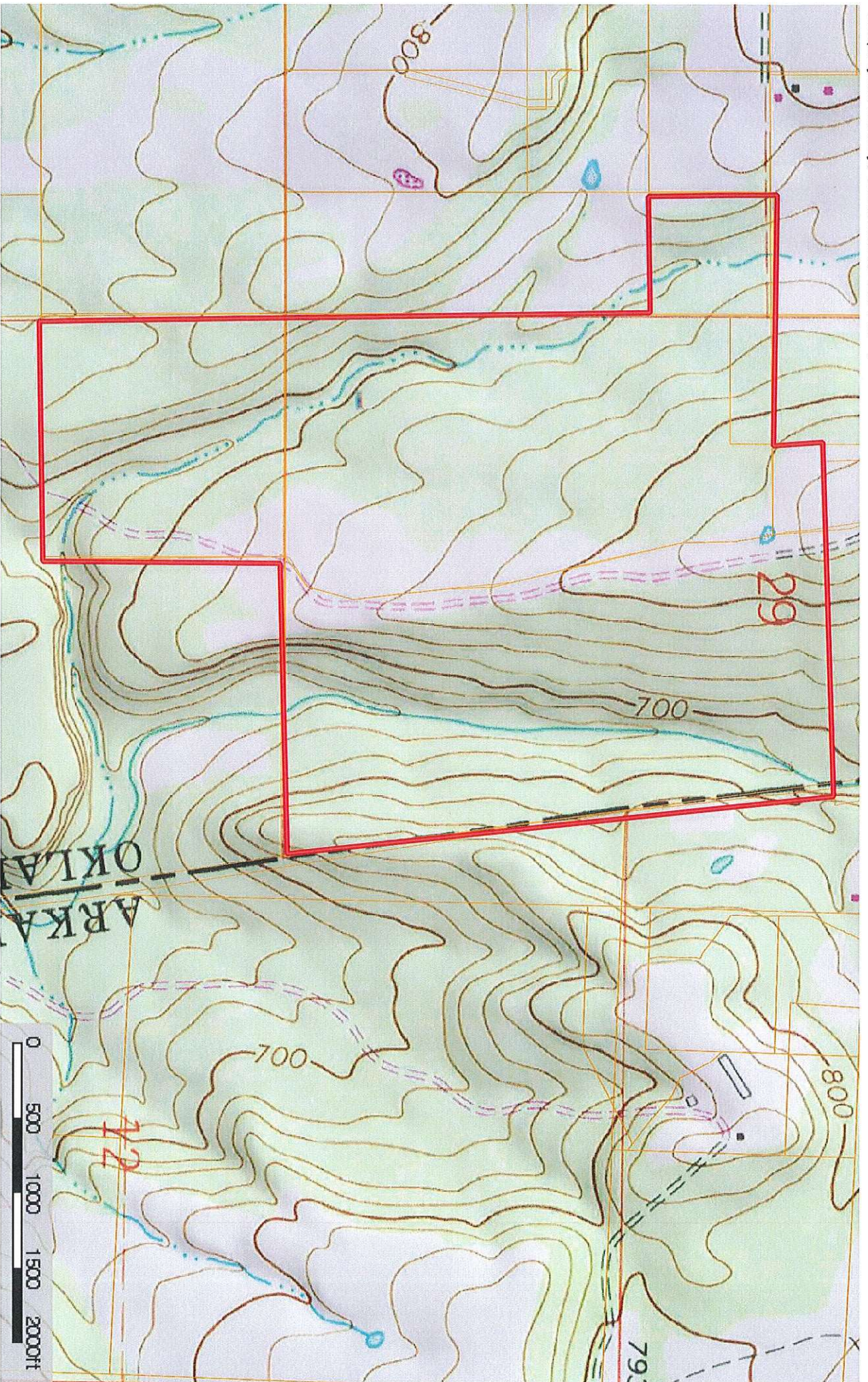
Sherman Shanklin
P: 918-273-2344 office 918-521-4696 cell

www.shanklinrealty.com

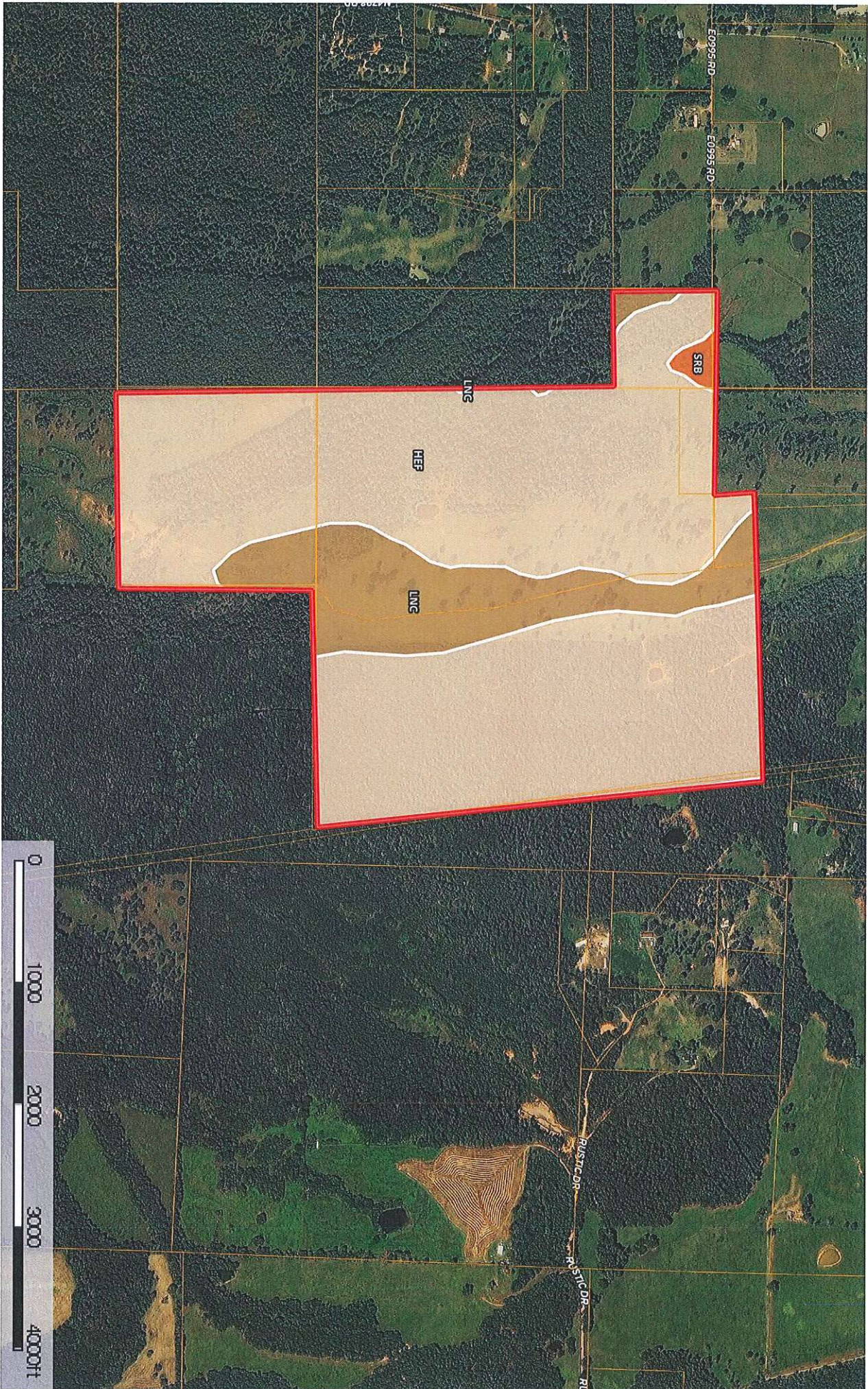
111 S. Ash St. Nowata, OK 74048



The information contained herein was obtained from sources
deemed to be reliable.
MapRight Services makes no warranties or guarantees as to the
completeness or accuracy thereof.



Boundary



Boundary

233.6 ac

SOIL CODE	SOIL DESCRIPTION	ACRES	%	CAP
LnC	Linker-Hector complex, 3 to 5 percent slopes	38.8	16.58	3e
SrB	Stigler silt loam, 1 to 3 percent slopes	1.8	0.78	3s
HeF	Hector-Linker-Enders complex, 5 to 40 percent slopes, extremely stony	193.1	82.56	7e
TOTALS		233.6	100%	6.3

Capability Legend

Increased Limitations and Hazards

Decreased Adaptability and Freedom of Choice Users

Land, Capability

	1	2	3	4	5	6	7	8
'Wild Life'	•	•	•	•	•	•	•	•
Forestry	•	•	•	•	•	•	•	
Limited	•	•	•	•	•	•	•	
Moderate	•	•	•	•	•	•		
Intense	•	•	•	•	•			
Limited	•	•	•	•				
Moderate	•	•	•					
Intense	•	•						
Very Intense	•							

Grazing Cultivation

(c) climatic limitations (e) susceptibility to erosion

(s) soil limitations within the rooting zone (w) excess of water