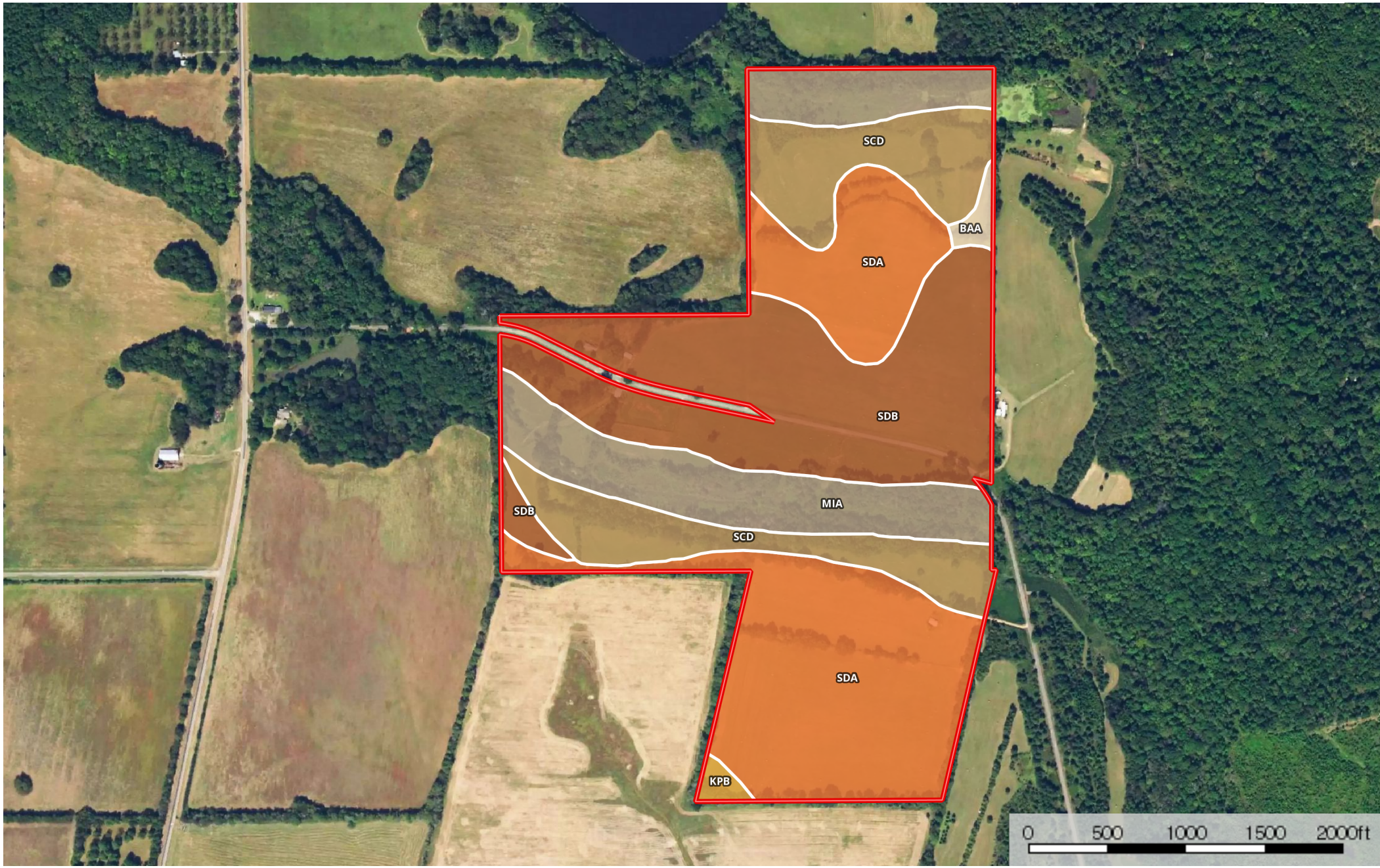



# 158 acres Perry County Robertson

Perry County, Alabama, 158 AC +/-



 Boundary

Boundary 157.9 ac

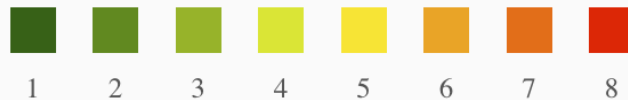
SOIL CODE	SOIL DESCRIPTION	ACRES	%	CAP
ScD	Smithdale sandy loam, 5 to 15 percent slopes	28.1	17.82	4e
SdA	Subran fine sandy loam, 0 to 2 percent slopes	53.0	33.54	2w
BaA	Bama fine sandy loam, 0 to 2 percent slopes	1.3	0.8	1
KpB	Kipling clay loam, 1 to 5 percent slopes	1.1	0.67	3e
SdB	Subran loam, 2 to 5 percent slopes	46.7	29.56	3e
MIA	Mantachie, Kinston and luka soils, 0 to 1 percent slopes, frequently flooded	27.8	17.62	5w
TOTALS		157.9	100%	3.18

### Capability Legend

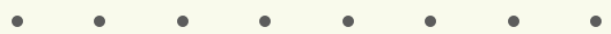
Increased Limitations and Hazards

Decreased Adaptability and Freedom of Choice Users

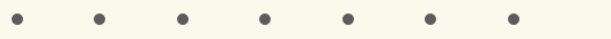
Land, Capability



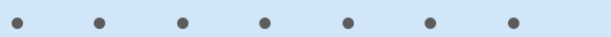
'Wild Life'



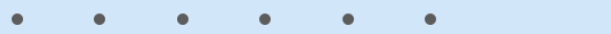
Forestry



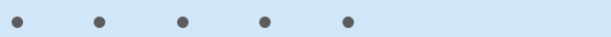
Limited



Moderate



Intense



Limited



Moderate



Intense



Very Intense



### Grazing Cultivation

(c) climatic limitations (e) susceptibility to erosion

(s) soil limitations within the rooting zone (w) excess of water