



FARM & RANCH

76+ BEAUTIFUL ACRES WITH A SEASONAL CREEK

TBD Jordan Rd. – Perrin, TX



STEPHEN
REICH GROUP
WILLIAMS TREW REAL ESTATE

Williamstrew[☆]
A DIVISION OF EBBY HALLIDAY REAL ESTATE, INC.

LISTED BY **STEPHEN REICH GROUP** OF WILLIAMS TREW REAL ESTATE

PROPERTY SUMMARY

DESCRIPTION

This beautiful 76 plus acre tract is scattered with magnificent hardwoods and a seasonal creek. An abundance of open spaces and two large ponds are also highlights of this property. Property was recently renovated creating new trails and completely redone ponds. Owner is in the process of seeding the property currently. This is a perfect opportunity with a blank canvas to create the ranch of your dreams.

LOCATION

CITY	Perrin
County	Parker
Schools	Perrin-Whitt
Topography	Cleared/Varied
Sale Type	LAND - F&R

OFFER SUMMARY

List Price	\$672,508
Lot Size	76.858 Acres
Utilities	No City Svcs, Elect. Off Site
AG Exemption	Yes

HIGHLIGHTS

- PERRIN-WHITT ISD
- SEASONAL CREEK
- TWO LARGE PONDS
- RENOVATED CREATING NEW TRAILS
- OUTSIDE CITY LIMITS
- BARBED WIRE, PARTIALLY FENCED

LISTING PRESENTED BY:



STEPHEN REICH
817-597-8884
stephen.reich@williamstrew.com

PARKER COUNTY OFFICE

405 S. FM 1187, STE. 400
ALED0, TX 76089

FARM & RANCH • RESIDENTIAL • COMMERCIAL-DEVELOPMENT • LAND

PROPERTY PHOTOS



STEPHEN REICH – 817.597.8884

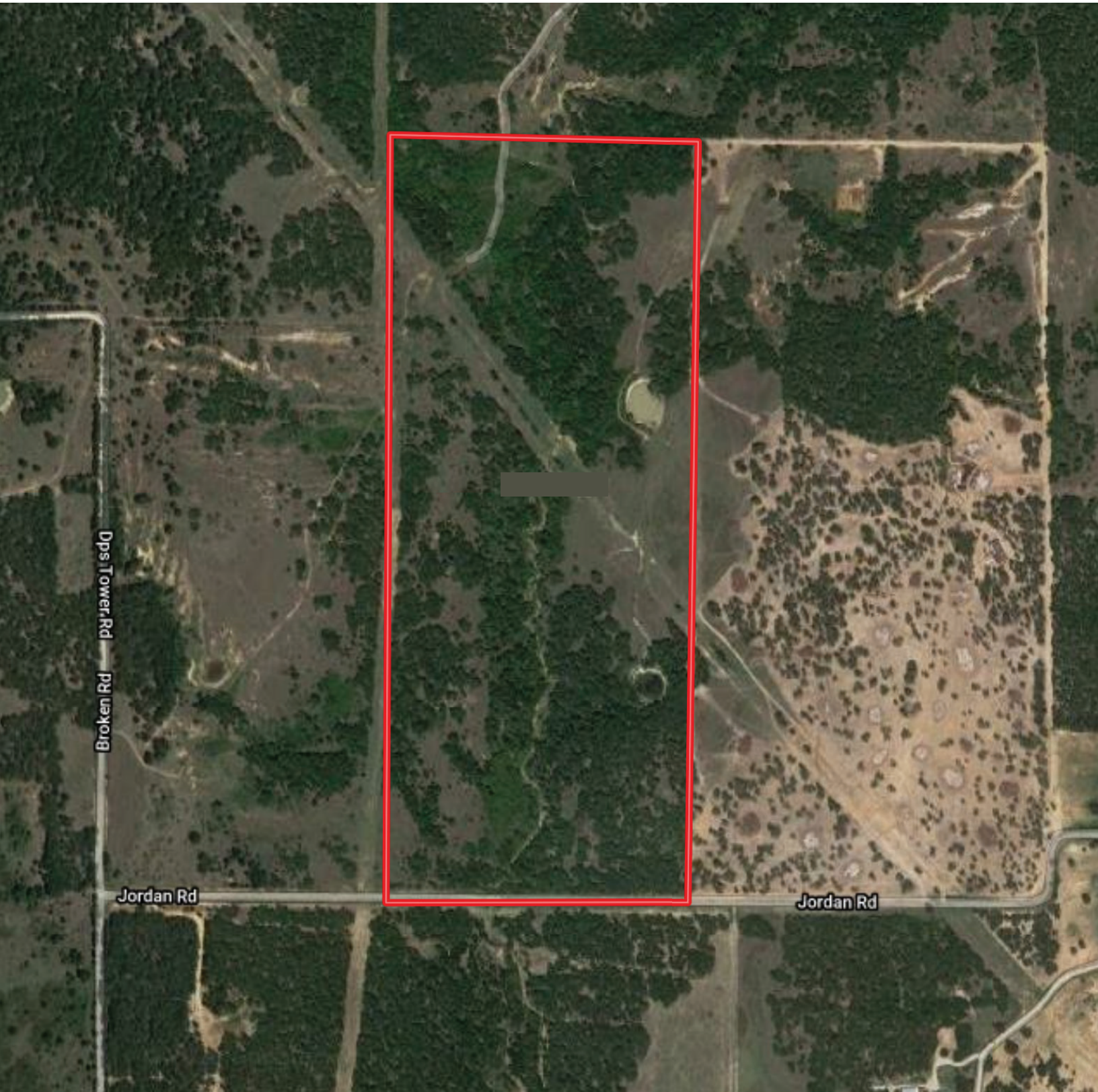


WilliamsTrew 
A DIVISION OF EBBY HALLIDAY REAL ESTATE, INC.

PROPERTY PHOTOS



AERIAL MAP



A topographic map with a yellow background and brown contour lines. A red rectangle is drawn over a central area. The map shows various elevation markers such as 1140FT, 1150FT, 1160FT, 1170FT, 1180FT, 1190FT, 1200FT, and 1210FT. A blue line representing a stream or river flows through the lower part of the map. A horizontal road or path is visible across the middle. The red rectangle highlights a specific area of interest, possibly a construction site or a specific land parcel.