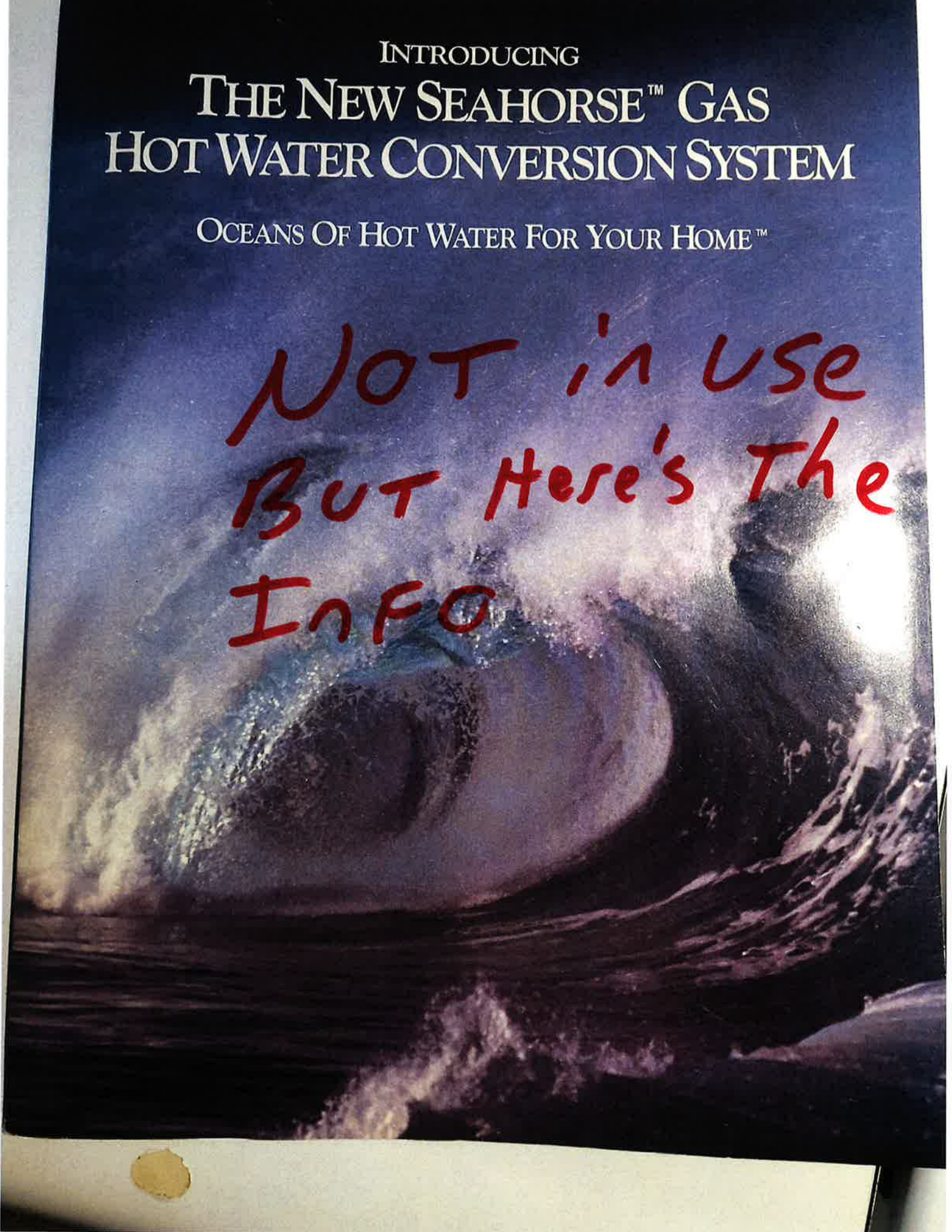


INTRODUCING
THE NEW SEAHORSE™ GAS
HOT WATER CONVERSION SYSTEM

OCEANS OF HOT WATER FOR YOUR HOME™

NOT in use
BUT Here's The
INFO



ALL THE HOT WATER YOU'LL EVER NEED

THE NEW, ECONOMICAL GAS CONVERSION SYSTEM

Imagine turning on your hot water and having all you need. Imagine not having to wait for your electric water heater to recover because everyone took showers before you did. Imagine running your clothes washer and dishwasher simultaneously and having plenty of hot water for both.

And then...Imagine smaller monthly electric bills. If you're like most families, it's estimated that the cost of electric water heating can contribute up to 40% of your average monthly electric bill. Imagine seeing the whole cost of your initial investment returned to you in only a few short years from the energy savings realized by converting from electric to gas water heating. Imagine no more.

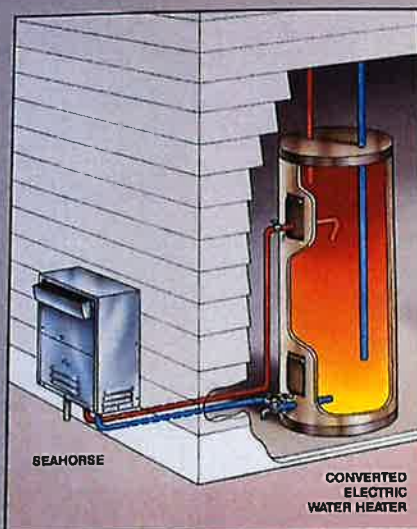
Introducing Seahorse™. The revolutionary, new, Gas Hot Water Conversion System from Gas-Fired Products.

So Unique It's Patented*

Many homes, like yours, have used electric water heaters because it cost the builder less, or because natural gas service simply was not available in your area. But now that either natural or propane gas is readily available — and priced at less than half the cost of electricity — many families want to use gas for water heating and home heating, but remain totally electric because of the high cost of conversion. Until now.

The new Seahorse™ Gas Hot Water Conversion System lets you convert your existing electric water heater to economical gas, without having to purchase a costly, new hot-water tank — the new Seahorse system uses the one you already own, even if it's located in a part of your house normally inaccessible to a conventional gas water heater. And because of the low cost of gas compared to electricity, you'll save hundreds of dollars a year in lower energy bills. This means your fuel savings will help you pay for the Seahorse system.

Seahorse operates on gas and is a completely self-contained auxiliary unit installed outside your home. The electric element in your existing hot water heater is disconnected, since electricity will no longer be used to heat the water. And,



Seahorse converts your existing electric water heater to gas. The blue color shows the incoming cold water and the red color shows the exiting hot water. With the electric element disconnected, your existing water heater remains a storage tank for hot water.

because the water now is heated by Seahorse, the electric water heater becomes a hot water storage tank only.

Operation

Your existing electric water heater now heats water and then stores it. But with Seahorse connected, it will no longer heat water, only store it. Here's how the Seahorse system works:

When hot water is drawn from the storage tank, it is automatically replaced by cold water. When the temperature of the water within the tank drops below the thermostat setting, the thermostat will activate a water pump inside the Seahorse unit to draw the cooler water from the storage tank and pump it through the Seahorse heat exchanger which is located outside the house.

Once a preset volume of water flow has been detected, the gas burner will come on. (There's even a built-in safety feature ensuring that no ignition should occur until water is flowing through the system.) The water flowing through the heat exchanger is heated in seconds by the highly efficient Seahorse burner. The hot water is then returned to the storage tank.

Once a sufficient amount of hot water has been returned to the storage tank (enough to satisfy the thermostat), the pump and main burner are turned off and the system returns to its standby state. This cycle repeats each time the thermostat calls for heat by activating the water pump in the Seahorse unit.

Fast Recovery Means Oceans Of Hot Water

The Seahorse system features a recovery rate of over 66 gallons per hour with a 90°F temperature rise. Water is heated very quickly... faster than by an electric water heater. The water in



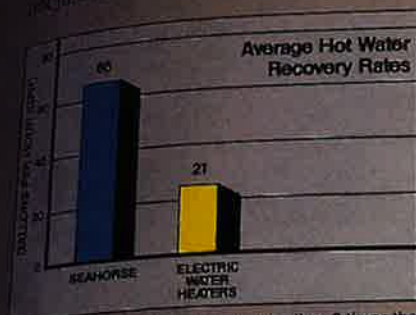
Seahorse is small and unobtrusive (28" high by 18" wide) and mounts directly on the outside wall of your home. And because it's located outside, there's no additional venting needed.

*U.S. PATENT NOS. 5020721 & 5203500

EVER NEED...AND THEN SOME.

SYSTEM FOR BOTH WATER & HOME HEATING

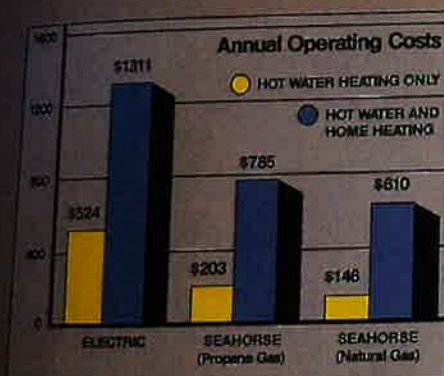
The storage tank is replenished faster than most households can use it. This means you can have hot water — oceans of it. So much, in fact, that Seahorse has the capability of being used for whole house heating too, not just for water heating.



The Seahorse system can give you more than 3 times the amount of hot water than you now have with your standard electric water heater!

Economy. Gas Vs Electricity.

Everyone knows the cost of energy continues to rise. But gas remains the lowest cost fuel you can use for both water heating



For an average family of four, the annual savings using the Seahorse system can be up to \$378 for just water heating alone and up to \$701 for both water heating and home heating.

and home heating. The Seahorse Gas Conversion System puts most of the heat energy it uses into the water. This high efficiency (over 80%), combined with the low cost of gas, means Seahorse is a real bargain.

Low Maintenance

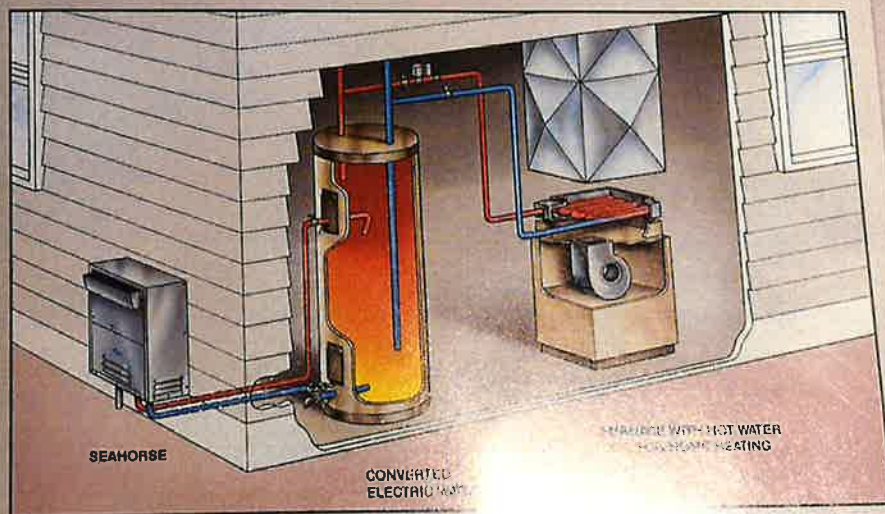
Should service be necessary, outdoor installation permits easy access to the Seahorse™ unit. All controls are quickly and easily accessible.

DOES YOUR HOME NOW USE OIL, ELECTRICITY OR A HEAT PUMP SYSTEM FOR HOME HEATING?

SEAHORSE CAN, IN MANY CASES, CONVERT YOUR PRESENT SYSTEM TO ECONOMICAL GAS.

If your house uses an oil, electric or heat pump system for home heating and has an electric water heater, Seahorse has been designed with you in mind. More than just an economical water heater, Seahorse's rapid recovery and heating capacity make it perfect for both domestic hot water needs and space heating too. And this means real savings for you.

To convert your existing heating system, a separate circulation system is installed. This consists of a hot water coil that serves as a heat exchanger, water supply and return lines



With the addition of a hot water coil type heat exchanger, the Seahorse system can still heat your water and now also heat your home.

from the hot water storage tank and a water pump. The new system is simply connected to your existing household thermostat. The new system is connected to your existing air handling system.

When your thermostat calls for heat, the water pump circulates hot water out of the storage tank and circulate it through the heat exchanger. Using the same fan that is part of your existing furnace, the heat exchanger transfers this heat energy from the water to the air.

YOUR HOME WILL NOW BE HEATED BY ECONOMICAL GAS.

The warm air is then circulated through your house until your thermostat is satisfied, just like it does now. The difference is that your home will be heated by economical gas, not expensive oil or electricity. And your home will be warm and comfortable, but for less. Your Seahorse representative will help you design the system based on your home's total heat loss and the size of your existing hot water storage tank.

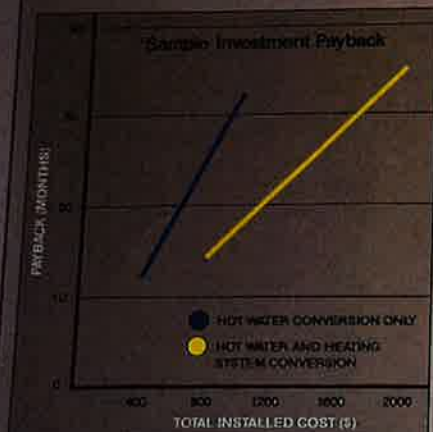
A STEP AT A TIME.

And you don't have to convert to gas space heating now if you don't want to. You can install Seahorse and enjoy the real benefits of having plenty of economical hot water now and upgrade your home heating system at a later time.

Whether for domestic hot water needs or whole house space heating, Seahorse won't leave you in the cold.

Investment Pay-Back

The Seahorse Gas Conversion System saves money. The adjacent chart shows how quickly you can recover your initial cost (including installation). Of course, the more hot water your family currently uses, the more you can save and the quicker your pay-back.

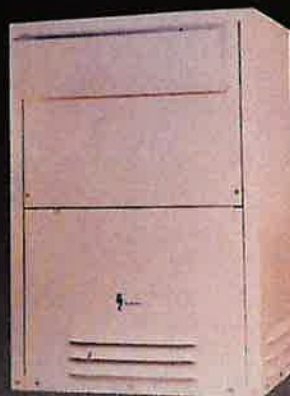


In many cases, the Seahorse system can offer a payback on the whole cost of your initial investment in under two years. After that, all the fuel savings are yours.³

Safety

Seahorse features a reliable, direct spark or standing pilot and a proof-of-flow system to ensure water is circulating before operation. Dual freeze protection is built in. The heat exchanger is enclosed in an insulated cabinet. And during freezing conditions, a thermostat in the water line is designed to activate the pump to circulate hot water from the storage tank through the Seahorse unit and back to the tank to prevent pipes from freezing and damage to the heat exchanger.

TECHNICAL SPECIFICATIONS



MODEL	INPUT BTU/Hr.	MANIFOLD PRESSURE	SUPPLY PRESSURE		IGNITION TYPE
			MIN.	MAX.	
WH60-N1	60,000	3.5" W.C.	4.5" W.C.	14.0" W.C.	24V Standing Pilot
WH60-L1	60,000	10.0" W.C.	11.0" W.C.	14.0" W.C.	
WH60-N5	60,000	3.5" W.C.	4.5" W.C.	14.0" W.C.	24V Direct Spark Ignition
WH60-L5	60,000	10.0" W.C.	11.0" W.C.	14.0" W.C.	

Dimensions	28"H x 18"W x 12"D
Shipping Weight	68 Lbs.
Gas Connection	1/2" NPT
Water Connections	Minimum 3/4" I.D.

For Your Safety

Installation and service must be performed by a licensed contractor. The installation must conform to local codes. In the absence of local codes, the installation must conform with NFPA54 and ANSI Z223.1. Information is available from the American National Standards Institute, Inc., 1430 Broadway, New York, NY 10018. For more safety information, please thoroughly read the instruction booklet supplied with the system.

A.G.A. Design Certified

The Seahorse Gas Hot Water Conversion System is manufactured to comply with the American National Safety Standards for both natural and propane gas operation. The Seahorse system is design certified by the American Gas Association.

¹ Estimate based on average of several commercially available 40 gallon capacity residential electric storage type water heaters. Recovery rates are calculated based on a 90°F temperature rise.

² Estimate based on U.S. Department of Energy's 1992 average unit energy costs, and the average hot water consumption for a family of four and a design heat loss of 30,000 Btu/hr. If the design heat loss is larger, estimation should be adjusted accordingly.

³ Estimate based on U.S. Department of Energy's 1992 average unit energy costs, average hot water consumption for a family of four and a design heat loss of 30,000 Btu/hr with electric resistance heating. If the design heat loss is larger, estimation should be adjusted accordingly.

*US PATENT NOS. 5020721 & 5203500



DISTRIBUTED BY
Marhausen Heating & Air Cond.
P. O. Box 42
Old Fields, WV 26845-0042
(304) 538-3150

Seahorse

OCEANS OF HOT WATER FOR YOUR HOME™

GAS-FIRED PRODUCTS, INC.

P.O. BOX 36486 CHARLOTTE, NC 28236 TELEPHONE (704) 372-3485 FAX (704) 332-5843

Plants located in Charlotte, NC; Goldsboro, NC and Ipswich, England

Gas-Fired Products, Inc. strives to improve quality and performance on a continuing basis and reserves the right to change specifications and materials without notice.